

True economy which makes no sacrifice of quality or comfort, this is the appeal of the Wyvern. Identical in body size with the two 6-cylinder Vauxhalls, the Wyvern costs less to buy and costs less to run.

Nine new colour schemes—see page 5.

The New Economical WYVERN

You cannot help liking this latest Wyvern with its fine sleek lines and new rich colours. There is such deep, friendly comfort in its well-appointed interior with room to relax and really enjoy your motoring.

The Wyvern offers exceptional motoring value. There is room for five to relax in comfort—room for six when the occasion arises—and doors are big and sensibly shaped to make entrance and exit easy. All this spacious comfort is contained within handy overall dimensions, and in running costs the Wyvern compares favourably with many small cars.

All the Vauxhall engineering refinements are built into this Wyvern . . . firm yet finger-light steering, easy ride suspension, straight-line braking, and “square” engine design to give more power from less petrol. The Wyvern offers beauty, prestige and road comfort at remarkably low basic cost.

The world's most economical 6-seater car

For sheer roominess the Wyvern stands alone in its class, and Wyvern value for money can be measured in every feature. Wyvern design is carefully balanced to give spacious comfort and generous luggage accommodation with outstanding economy in running costs. The rear seat is a full 57 inches wide, giving room for three to sit in comfort. Front seat hiproom is 56½ inches, again giving room for three, with a range of adjustment of 5 inches for legroom without affecting rear seat legroom. There is ample headroom and legroom for the tallest passenger. The Wyvern is the roomiest economy car on the roads today. Measure its superiority in every dimension: then try a Wyvern on the road to experience its smooth, quiet running and lively performance. There is 15 cubic feet of luggage space—unobstructed by the spare wheel.

The 1½ litre “square” engine gives more power from less petrol, with low piston speeds and consequent longer engine life. And the Wyvern has the same easy road holding characteristics as the more powerful Velox and Cresta.

Four-cylinder Wyvern economy engine

Powered by the latest 4-cylinder version of the famous Vauxhall "square" engine, the Wyvern has a notable road performance. Quiet and flexible, it is very much a top gear car. It holds a mile a minute as long as you like with another 10 miles an hour comfortably in hand. But drive for economy and you will be astonished at the distance that this roomy car can cover on a gallon of fuel.

This petrol-saving power unit develops high torque at low speeds and maintains high torque throughout the whole speed range. In performance this means flexibility—the ability to thread through traffic, turn sharp corners and climb long hills, all in top gear.

Opmærksomheden henledes paa, at samtlige Vauxhall-Modeller naturligvis leveres med Venstre-Styring i Danmark, samt at Vognene ikke foreløbig kan leveres med slangeløse Dæk.

a very good performance in terms of power and acceleration over a wide speed range.

Room for five or six to relax in comfort

The Wyvern interior has wide comfortable seats giving quite exceptional head and shoulder room, with generous hiproom too. Upholstery is in colours to harmonise with the exterior colours; in soft, elegant yet hard wearing Vynide, and in two-colour effects with Vynide and Carskin. Carskin is a woven fabric of Vynil coated rayon—colourful, durable and washable. Door trim, carpet and headlining are in colours to tone with the upholstery and the headlining and trim is washable plastic cloth. The steering wheel, instrument panel, door facia panels and window mouldings, etc., are in colours to blend with the interior decor. There are nine different combinations of harmonising interior and exterior colours (see page 5). Your Vauxhall dealer will gladly show you the whole range.

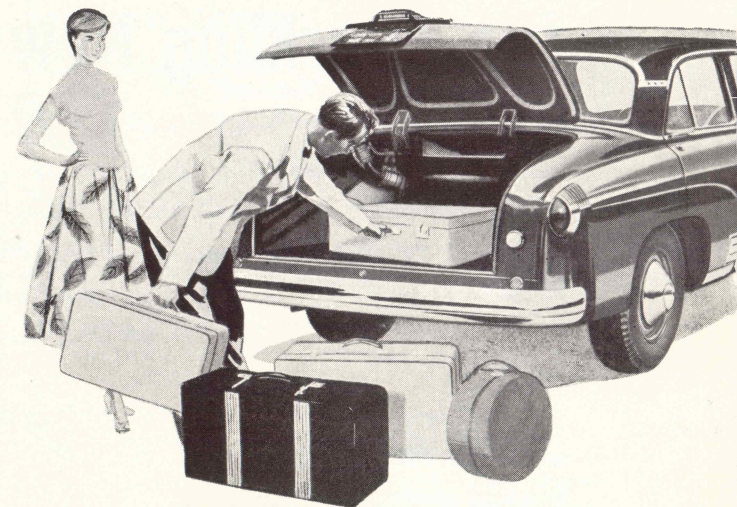
Clear vision all-round . . . from the new Vauxhalls

Important styling changes in the new Vauxhalls are the slimmer windscreen pillars and wider windscreen and panoramic rear window. Windscreen pillars are slender and set well back so that they do not interfere with forward vision. Rearward vision is widened making reversing easier and safer, and the new panoramic driving mirror gives a wide-angle view of the road behind. The big new rear windows also make the cars much more light and airy inside. Altogether, the new Vauxhalls are exceptionally pleasant as well as very easy cars to drive.

Recirculating ball steering makes Vauxhalls so easy to steer

With the special Vauxhall recirculating ball steering gear movement of the steering wheel is transmitted to the road wheels through ball bearings. Friction is almost entirely eliminated. The effort required actually lessens as you approach full lock. This is why Vauxhalls are so very easy to park, and so effortless to drive on long journeys.

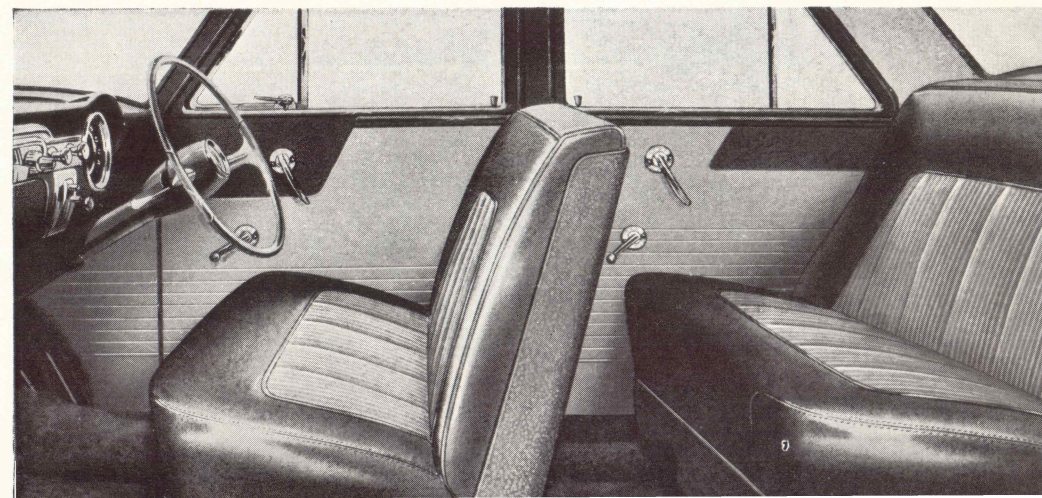
Vauxhall steering has another special feature—a flexible coupling between steering column and steering box. This coupling helps to absorb road shocks and is particularly valuable on very rough roads.



Large capacity luggage boot

There is ample room for all your luggage and the flat floor of the boot is free from obstruction. The spare wheel does not take up valuable luggage space and is easily accessible beneath the boot, without disturbing the luggage.

The push button release of the boot lid cannot be operated until the key is turned in the lock within the push button itself. This key differs from the car door key and ignition key so that the car may be left unlocked in a public garage with luggage safely under lock and key.



23.000,-

The Sparkling New VELOX

This is the Vauxhall Velox, handsome, high spirited and splendidly appointed—yet a spacious family car that is moderate in price and most economical to run.

Settle five or six people in this Velox . . . in the utmost comfort. Stow *all* their holiday luggage in the capacious boot. Pick your cruising speed in the fifties . . . sixties . . . seventies at will. Thread your way through dense traffic . . . in top gear all the time. Acceleration to 50 m.p.h. through the smoothest of gearboxes takes less than 14 seconds. Top speed is way up in the eighties.

Corner fast and safely, steady as a rock in this Velox, with light accurate steering and suspension that smothers road shocks. Big hydraulic brakes and ample power in reserve give you command of the road.

There is pride in owning this elegant Velox and lasting joy in driving it.

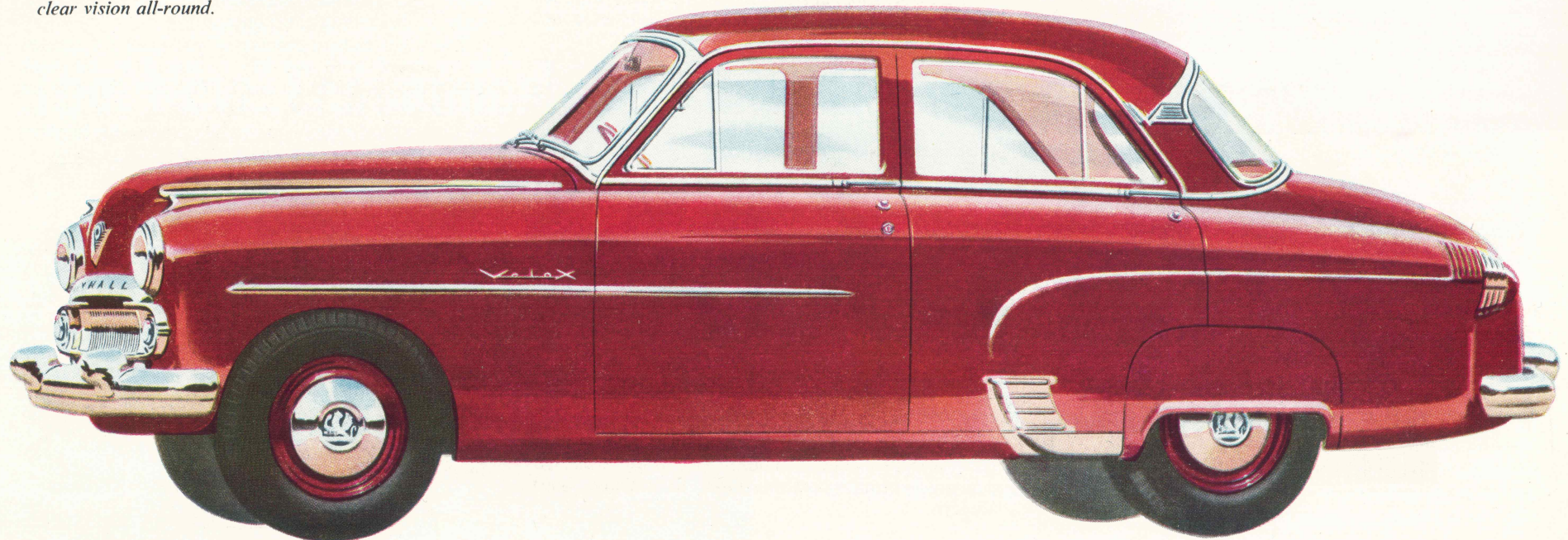
New functional styling with deeply curved wind-screen and rear window cheats the wind and gives clear vision all-round.

Weight-saving integral construction

The secret of Velox outstanding performance—and of the car's effortless cruising up hill and down dale—is the combination of “square” engine power with weight-saving integral construction. In other words, the Velox has a very good power-to-weight ratio.

Integral construction was pioneered by Vauxhall engineers 18 years ago. In its latest form it shows the fruits of long experience under all conditions of service.

The torsional stiffness of Vauxhall integral construction plus the quality of Vauxhall suspension give the Vauxhall ride its characteristic easy smoothness at all speeds. You corner fast with complete confidence and control. The independent front wheel suspension has really big coil springs containing double-acting shock absorbers. Rear leaf springs are extra wide, with angle-mounted shock absorbers. Jolts are just not felt, even at speed on a poor road surface.

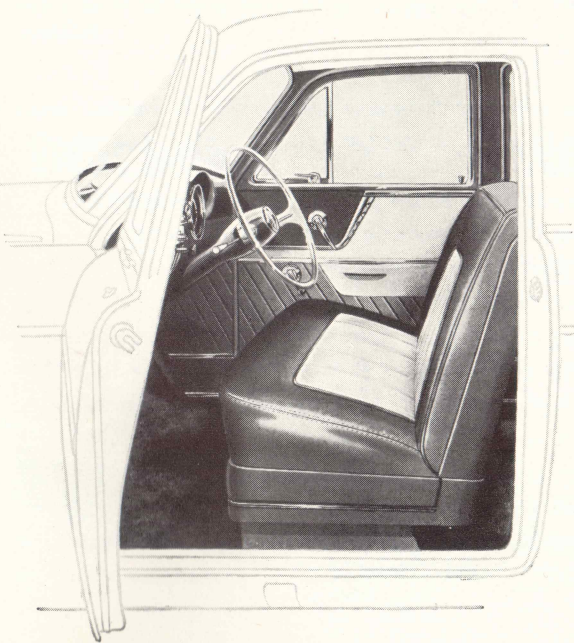


Six-cylinder "square" engine for performance plus economy

Velox and Cresta models are powered by the outstandingly successful Vauxhall 2½ litre 6-cylinder "square" engine, well known for its sparkling performance, smoothness and flexibility, and for its petrol-saving economy.

Take the wheel yourself to put the Velox through its paces. No matter what you have heard in praise of its liveliness, flexibility and road holding, you will be very agreeably surprised. The Velox is a top gear car . . . in traffic, on hills and on the open road.

There is a choice of two compression ratios—6.5 to 1 for standard petrols and 7.3 to 1 for even better performance from premium fuels. Whichever you prefer, Vauxhall "square" engine design extracts the utmost in performance and economy from every pint of petrol used. And "square" engines are built to last—low piston speeds, bearings of generous area, chromium plated top piston rings and precision finished bores.



Nine refreshing colour schemes for Wyvern and Velox

EXTERIOR AND ROAD WHEELS

Black - - - - -
Black - - - - -
Maroon - - - - -
Silver Straw - - - - -
Silver Straw - - - - -
Blue Haze - - - - -
Cobalt Blue - - - - -
Sylvan Green - - - - -
Shoreline Beige - - - - -

UPHOLSTERY IN VYNIDE AND CARSKIN

Red Vynide
Red Vynide and
Fawn Carskin
Red Vynide and
Fawn Carskin
Red Vynide
Red Vynide and
Fawn Carskin
Grey Vynide and
Light Grey Carskin
Blue Vynide and
Light Blue Carskin
Green Vynide and
Light Green Carskin
Brown Vynide and
Fawn Carskin

Door and side trim material, headlining and carpet are in colours to tone with the upholstery. Instrument panel, steering wheel, door facia panels and window mouldings, etc., are in harmonising colours of Golden Beige, Coral Red or Pewter Grey to tone with the interior colour scheme.

Harmony of colour in new interior styling

Take a look inside this attractively styled Velox. Upholstery is in Red Vynide and Fawn Carskin with door and side panels in Red and Beige. Headlining is in Cream Vinyl plastic cloth. Trimming materials have been specially chosen for their attractive appearance, soft texture and hard wearing qualities. They are all washable and so easy to keep clean. Instrument panel, steering wheel and interior paintwork are Coral. The carpet is Red. This carefully balanced colour scheme harmonises perfectly with the Maroon exterior finish shown on the opposite page. There are nine different pleasing colour combinations for Velox and Wyvern.

Easy gear change

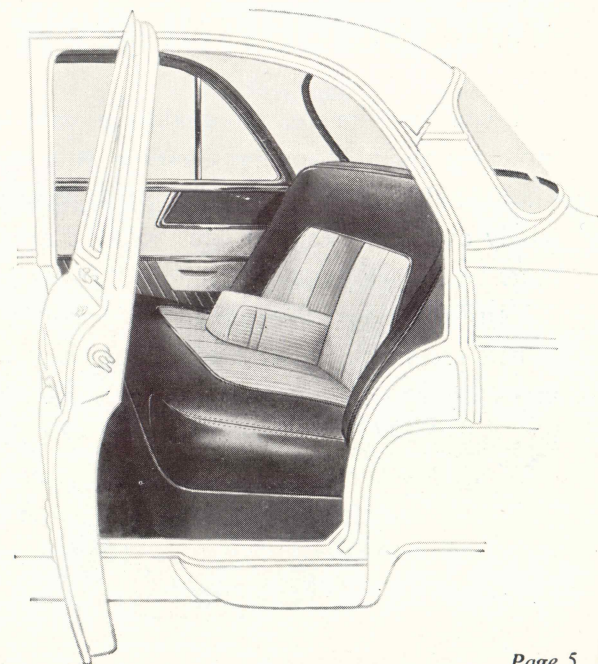
Slick, silent gear changes need only finger tip pressure. With Vauxhall controlled synchromesh on second and top, clashing of gears is virtually impossible.

New, more powerful brakes

Vauxhall brakes, always extremely efficient, now show the fruits of an engineering policy of progressive improvement. The well-proved system of operation is basically unchanged, but detail refinements produce a more powerful action and smoother operation.

The convenient Vauxhall handbrake

The hand falls naturally to the brake lever placed so conveniently beneath the end of the driving seat. There is no need to reach forward or to change position. The thumb-operated release button is enclosed in a protecting ring. The lever is readily to hand yet never in the way.



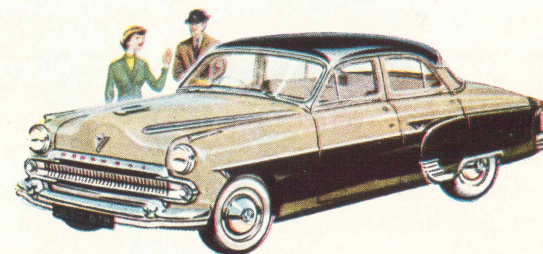


The Colourful New CRESTA

If you have an eye for quality, a taste for luxury and a shrewd appreciation of motoring values, then the Cresta is your car. All the exhilarating performance and mechanical excellence of the Velox will be yours—the same spacious comfort within such handy overall dimensions and the same simple economy. But the Cresta offers much more besides—a score of luxurious “extras” are standard equipment.

You may choose two-colour or single-colour finish and Nylon or leather upholstery. A new super-efficient fresh air heating and ventilating system is built in. So are such useful items as the automatic windscreen wash and automatic light switches in the glove box and the luggage boot, and courtesy switches on the front doors to illuminate the interior when the doors are open. There are many refinements of luxury in equipment and finish—an electric clock and an electric cigarette lighter on the fascia panel, vanity mirror behind passenger's sun visor, coat hangers on the centre pillars and a lock to the glove box. Carpets are all-wool woven pile.

From the sparkling two-colour exterior to the smallest interior detail the Cresta is equipped as a luxury model. It is colourful in styling and colourful in character. The Cresta is a real luxury model in everything except price. The Cresta provides roominess, performance and luxury at a price which makes this car an outstanding example of Vauxhall value.



Vauxhall value in a true luxury car

The Cresta is packed with de luxe features to add to the pleasures and comfort of motoring. The Cresta has the distinguished appearance, the performance and the roominess of the Velox; in fact, it has all that the Velox has and much more besides. These are some of the luxury features which distinguish the Cresta from the Velox.

EXTERIOR

4 dual-colour finishes in new "three-phase" treatment.

Side Nameplates in gilt on new full-length chrome flashes to enhance the "three-phase" colour scheme.

Whitewall tyres.

Bonnet Mascot—a streamlined version of the famous Vauxhall speedbird.

Rim Embellishers. Snap fitting into place: of polished stainless steel.

Windscreen Washers. Built in and operated by a button in the centre of the wiper control on the fascia panel.

INTERIOR

Real leather or Nylon fabric upholstery with an extra layer of foam rubber for supreme riding comfort.

Heater. New Vauxhall heater, with instantaneous response to controls, fitted into the car's built-in fresh air ventilation system.

Cigarette Lighter on instrument panel.

Lock to Glove Box in Instrument Panel with individual key for security.

Light to Glove Box in Instrument Panel—switches on as lid opens.

Coathooks on roof side rail behind centre pillars.

Vanity Mirror on sunvisor at passenger's side.

Electric Clock at centre of loudspeaker grille.

Courtesy Switches operated by front doors: they switch interior light on and off as front doors open and close.

Luggage Boot Lamp automatically switches on as boot lid is opened.

All-wool woven pile carpets.

Pile carpet on flat floor of luggage boot.

Cresta colours to suit all tastes

Two-colour exteriors in new "three-phase" treatment

UPPER AND LOWER	MIDDLE AND ROAD WHEELS	UPHOLSTERY LEATHER OR NYLON
Maroon - - -	Silver Straw - -	Red and Beige Leather Grey and Light Grey Nylon
Silver Straw - - -	Cobalt Blue - -	Blue and Light Blue Leather Blue and Light Blue Nylon
Black - - - -	Blue Haze - -	Blue and Light Blue Leather Grey and Light Grey Nylon
Black - - - -	Shoreline Beige -	Brown and Fawn Leather Brown and Fawn Nylon

Single-colour exteriors

Black - - - - -	Red and Beige Leather Grey and Light Grey Nylon Brown and Fawn Nylon
Maroon - - - - -	Red and Beige Leather Grey and Light Grey Nylon Red and Beige Leather
Silver Straw - - - - -	Grey and Light Grey Nylon Blue and Light Blue Leather Blue and Light Blue Nylon
Blue Haze - - - - -	Blue and Light Blue Leather Blue and Light Blue Nylon Blue and Light Blue Nylon
Cobalt Blue - - - - -	Green and Light Green Leather Grey and Light Grey Nylon Brown and Fawn Leather
Sylvan Green - - - - -	Brown and Fawn Leather Brown and Fawn Nylon
Shoreline Beige - - - - -	

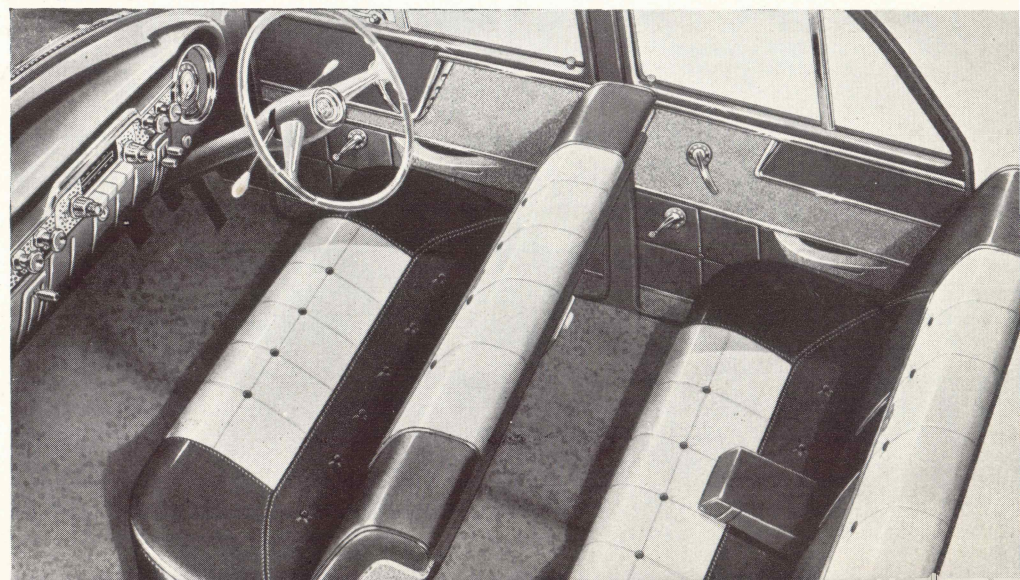
Door and side trim material, headlining and carpet are in colours to tone with the upholstery. Instrument panel, steering wheel, door fascia panels and window mouldings, etc., are in harmonising colours of Golden Beige, Coral Red or Pewter Grey to tone with the interior colour scheme.

Greater luxury . . . greater elegance in the Cresta

Every detail of the Cresta is planned for extra luxury, comfort and convenience. In the Cresta you will find the same spacious comfort, same ample seat width, generous headroom and legroom as in the Velox and Wyvern—but with greater luxury and elegance.

Upholstery shown here is real leather, but you may choose woven Nylon fabric, if you wish, in colours to harmonise with the exterior. The leather upholstery shown is in two shades of Blue with the lighter Blue repeated in the Vynil cloth headlining and door panels. The fitted woven carpets are Light Blue too. Instrument panel, door trim and steering wheel are Pewter Grey.

This colour scheme goes with the Black and Blue Haze Cresta on the opposite page. There are equally attractive interiors for seven single-colour exteriors and three additional two-colour exteriors.



Brief Specification—Wyvern, Velox and Cresta

ENGINE. Wyvern 4 cylinders; Velox and Cresta 6 cylinders. Pushrod operated overhead valves in detachable head. Gearbox built as unit with engine, complete assembly mounted in frame at three points on rubber insulators.

Bore	3.125 in. (79.37 mm.)	
Stroke	3.00 in. (76.20 mm.)	
Displacement	Wyvern 92 cu. in. (1507 c.c.)	
	Velox and Cresta 138 cu. in. (2262 c.c.)	
Compression Ratios	6.5 : 1 and 7.3 : 1	
Max. B.H.P. at 4,000 r.p.m.:		
Wyvern	45.5	47.7
Velox and Cresta	65.5	67.5
Max. Torque:		
Wyvern at 2,000 r.p.m.	76.6 lb. ft.	81.1 lb. ft.
Velox and Cresta at 1,400 r.p.m.	110 lb. ft.	114 lb. ft.

Alloy iron cylinder block cast integrally with crankcase; webbed for extra rigidity. Wyvern three-bearing, Velox four-bearing, forged steel crankshaft. Steel shell, white-metal lined bearings. Aluminium alloy tin-plated pistons, with split, oval ground skirts. Three high-pressure piston rings; top, internal stepped compression rings, *chrome-plated* for extra-long bore life.

LUBRICATION SYSTEM. High pressure; embodying submerged gear pump driven in tandem with distributor from camshaft helical gear. Jet lubrication of cylinder bores. Replaceable filter element.

COOLING SYSTEM. Thermostatic control. Temperature gauge on instrument panel. Circulation by centrifugal pump at front of cylinder head. Distribution pipe in head to cool exhaust valve seats and sparking plug bosses. Pump spindle requires no lubrication. Two-bladed fan. Radiator frontal area, Wyvern 225 sq. in. (1450 sq. cm.), Velox and Cresta 340 sq. in. (2194 sq. cm.). Capacity of system: Wyvern 12 pints (6.81 litres), Velox 17.5 pints (9.95 litres), Cresta 19.25 pints (10.9 litres).

FUEL SYSTEM. AC mechanical pump driven by eccentric on camshaft. Zenith model 30 VIG 11 carburettor, fitted with accelerator pump and part throttle economy valve. Air intake fitted with oil bath air cleaner. Fuel tank capacity 11 Imperial gallons, 13.2 U.S. gallons, 50 litres.

CLUTCH. Single dry plate with spring-loaded centre. Diameter, Wyvern 7.25 in. (184 mm.), Velox and Cresta 8 in. (203.2 mm.).

GEARBOX. Three forward speeds and one reverse. Vauxhall-controlled synchromesh on top and second speeds. All gears of helical tooth form. Gear control lever mounted on steering column. Gearbox ratios: Wyvern—First, 3.43 to 1; Second, 1.64 to 1; Top, direct; Reverse, 3.43 to 1. Velox and Cresta—First, 3.10 to 1; Second, 1.63 to 1; Top, direct; Reverse, 3.10 to 1.

DRIVE LINE. Single open propeller shaft with Hardy-Spicer needle roller bearing, universal joints.

REAR AXLE. Semi-floating, with hypoid final drive. Two-pinion differential assembly with taper roller bearings. Induction hardened axle shafts. Axle ratio, Wyvern 4.625 to 1 (8/37), Velox and Cresta 4.125 to 1 (8/33).

FRONT SUSPENSION. Independent front wheel springing of coil spring and wishbone type. Complete front assembly bolted, with rubber insulation, to underside of body forward extension. Stabiliser bar mounted across vehicle in front of suspension unit. Double-acting telescopic shock absorbers mounted within each coil spring.

REAR SUSPENSION. Long, semi-elliptic underslung rear springs of wide leaf type (2.25 in., 57.1 mm. wide), shackled at rear end. Spring leaves protected by gaiters; eyes and shackles fitted with rubber bushes. Direct double-acting telescopic shock absorbers mounted with pronounced inward inclination, between U-bolt clamp plates on rear axle and reinforcement on underside of integral body.

BRAKES. Footbrake. Vauxhall-designed brakes with Lockheed hydraulic operation. Total lining area 100.6 sq. in. (649.4 sq. cm.). Handbrake lever located at offside of driver's seat: horizontal pull-up type, operates rear brakes only by separate mechanical cable system.

STEERING. Re-circulating ball type steering gear. Flexible coupling in steering column. Steering wheel diameter 17 in. (432 mm.). Steering gear ratio 15.5 to 1. Turning circle 38 ft. (11.58 m.). Left or right hand drive is optional.

WHEELS AND TYRES. Detachable steel disc wheels with well-base rims. Size 4J-15. Tubeless Tyres: Wyvern: Standard, 5.60-15; Optional, 5.90-15, 4 ply or 6 ply. Velox and Cresta: Standard, 5.90-15, 4 ply, Optional, 5.90-15, 6 ply.

ELECTRICAL SYSTEM. 12-volt positive earth return with single-pole wiring. Dynamo output regulated by current voltage control system. Sealed front, pre-focus double-dipping headlamps, parking lamps flush mounted below headlamps. Foot operated dipper switch. Twin combined tail and stop lamps. Instrument panel lamps with adjustable intensity of illumination. Flashing direction indicators—separate amber lamps at rear. Battery: Wyvern 12-volt, 43 or 44 amp. hr., Velox and Cresta 12-volt, 53 amp. hr.

THE BIGGER AND BETTER VAUXHALL HEATER. A completely new heater and de-icing unit designed to fit the built-in ventilation system is standard on the Cresta and an optional extra for the Wyvern and Velox. By controlling the mixture of hot and cold air passing through the heater element—instead of varying the flow of water—it provides instant response to the temperature control lever. The unit is mounted on the engine side of the dash. A flap valve regulates the proportions of air passing straight into the car and through the heater element. For all normal use the booster fan is unnecessary. With its aid, however, the volume of hot or cold air can be increased at slow road speeds.

DIMENSIONS AND WEIGHTS. Wheelbase, 8 ft. 7 in. (2.62 m.). Track: front, 4 ft. 5½ in. (1.36 m.), rear, 4 ft. 6¾ in. (1.39 m.). Overall: length—Wyvern, 14 ft. 2¾ in. (4.34 m.), Velox and Cresta, 14 ft. 4¼ in. (4.37 m.); Width, 5 ft. 6½ in. (1.69 m.); Height, 5 ft. 1½ in. (1.56 m.). Turning Circle, 38 ft. (11.58 m.). Seat width: front, 4 ft. 8½ in. (1.43 m.), rear, 4 ft. 9 in. (1.448 m.). Legroom: front, 3 ft. 7½ in. to 4 ft. 0½ in. (1.105 m./1.232 m.). Headroom: front, 3 ft. 4½ in. (1.029 m.), rear, 3 ft. 2½ in. (966 mm.). Kerb weight (including petrol, oil, water, tool kit and spare wheel with tyre):

Wyvern	— 1 ton ¾ cwt. (2,330 lb., 1058 kg.).
Velox	— 1 ton 2 cwt. (2,475 lb., 1123 kg.).
Cresta	— 1 ton 2¼ cwt. (2,500 lb., 1134 kg.).

In accordance with the Vauxhall policy of progressive improvement, the right is reserved to alter any details of price, specification and equipment without notice.

VAUXHALL MOTORS LIMITED • LUTON • BEDFORDSHIRE • ENGLAND

The British Manufacturing Division of General Motors Corporation



VX1024/10/55 K.H.K.

Printed in England
Imprimé en Angleterre