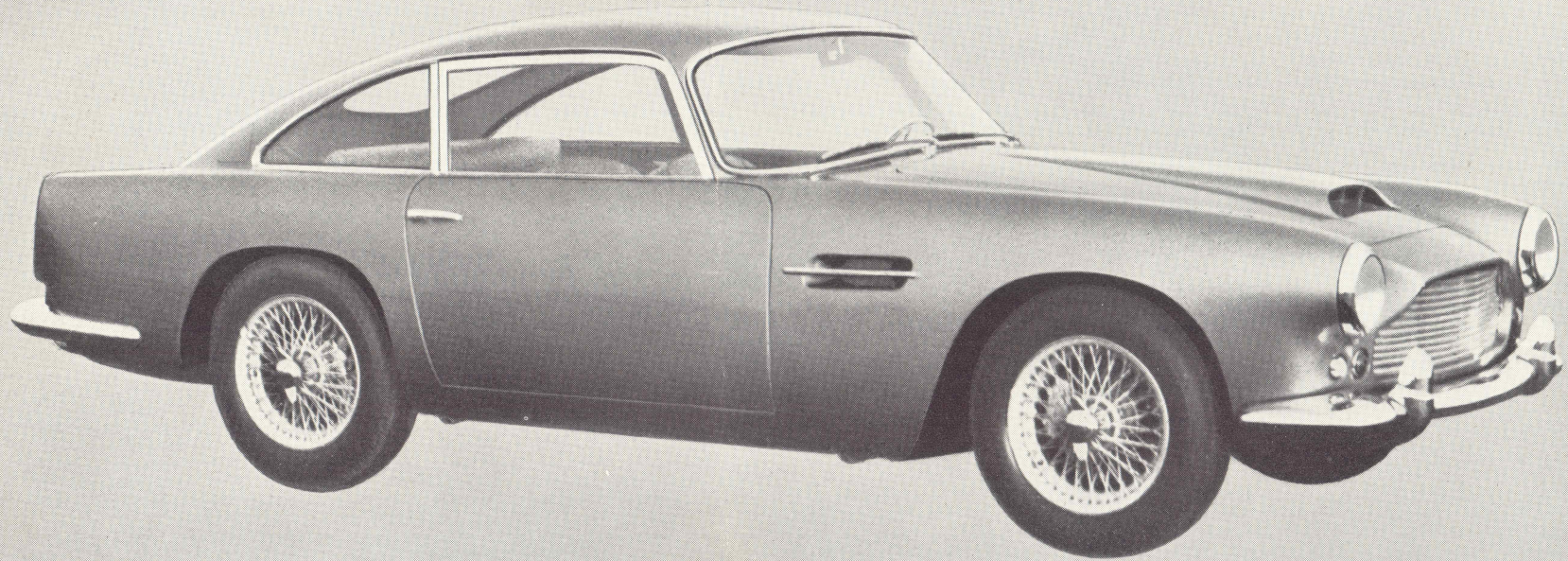




DB4



THE ASTON MARTIN DB4







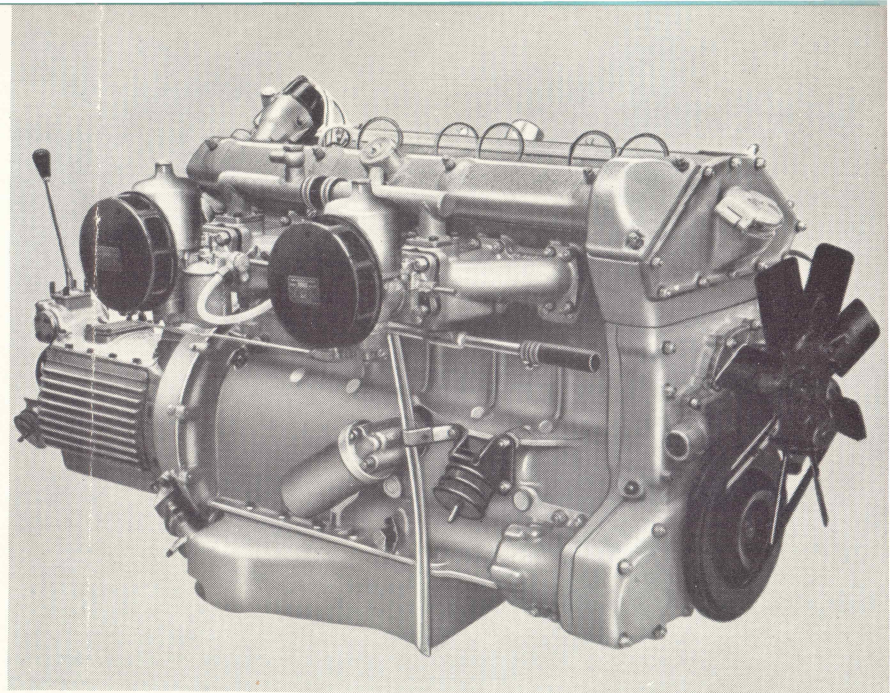
By Appointment to  
His Royal Highness the Duke of Edinburgh  
Motor Car Manufacturers  
Aston Martin Lagonda Limited

Elegance is self-evident in every meticulously tailored detail of the Aston Martin DB4. Combining the skills of a century of David Brown engineering and the lessons of ten years of sports car racing on the most arduous race circuits of the world,\* the DB4 provides for the most critical of car owners the exhilarating experience of really safe, fast motoring. The performance is unique and proudly proven through such unparalleled tests as this . . . from START to 100 m.p.h. to STOP in 26.2 seconds! This is a four-seater production sports car which is gracious and comfortable, eminently safe and excitingly fast, exceptional by world standards of judgment.

### \* 1959 SPORTS CAR WORLD CHAMPIONS

Aston Martin is the first British marque to win this title:

- 1st** 1000 km. Nurburgring (3rd successive year)
- 1st** Le Mans 24 Hour (also 2nd)
- 1st** Tourist Trophy (third time)



ASTON MARTIN DB4 power unit developing 263 h.p. S.A.E.

### Calculated Road Speeds

AXLE RATIO	1st 5800 R.P.M.	2nd 5800 R.P.M.	3rd 5800 R.P.M.	4th 6000 R.P.M.	4th GEAR 1000 R.P.M.
	M.P.H.	M.P.H.	M.P.H.	M.P.H.	M.P.H.
3.77	49	71	98	128	21.2
3.54	53	75	105	138	22.6
3.31	56	81	112	148	24.2

## SPECIFICATION

**Engine** – Six cylinder. Bore 92mm. (3.622in.). Stroke 92mm. Cubic capacity 3760 c.c. (224 cu.in.). Aluminium alloy cylinder block and head. Seven-bearing crankshaft.

Twin overhead camshafts. Two-stage Duplex chain drive.

Hemispherical combustion chambers.

Twin S.U. diaphragm type carburettors.

**Exhaust System** – Twin pipe.

**Lubrication** – Chain driven Hobourn-Eaton oil pump and Purolator full flow filter.

**Cooling** – Centrifugal water pump and fan. Cross flow radiator.

**Compression Ratio** – 8.25:1.

**Power Output** – 240 b.h.p. at 5,500 r.p.m. 263 h.p. S.A.E. rating at 5,700 r.p.m.

**Clutch** – Borg & Beck 10in. single plate.

**Gearbox** – David Brown four-speed with synchromesh on 1st, 2nd, 3rd, and top gears.

**Rear Axle** – Salisbury hypoid.

**Suspension** – *Front*: Independent. Co-axial coil springs and Armstrong telescopic shock absorbers. *Rear*: Live axle. Parallel trailing links and Watt's linkage. Coil springs. Armstrong piston type shock absorbers.

**Steering** – Rack and pinion. Column adjustable for rake and angle.

**Brakes** – Dunlop disc front and rear. Hydraulically operated vacuum servo assisted.

**Fuel Tank** – 22.8 U.S. gal. (19 Imp. gal.). Electrically operated reserve 3.6 U.S. gal. (3 gal.).

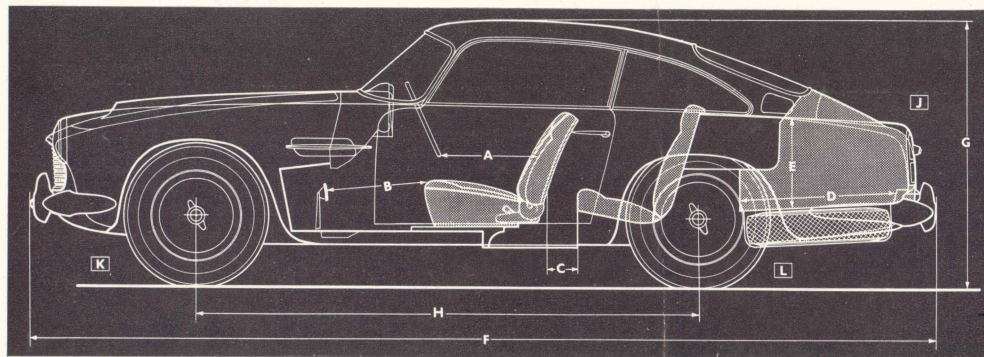
**Wheels and Tyres** – Dunlop centre-lock 5in. rims. 6.00×16 Avon Turbospeed 'P' tyres.

**Electrical Equipment** – Lucas 12-volt system. 51 amp./hour battery. Two-speed windscreen wipers and electric washers, operated by single control knob. Steering column finger-tip controls for operating direction indicators, headlamps main beam and for flashing headlamps. Map reading and interior lights. Cigar lighter.

**Instruments** – Speedometer, revolution counter, oil pressure gauge, water temperature gauge, fuel gauge with reserve warning light, ammeter and electric clock.

**Heating and Ventilating** – Comprehensive heating, ventilating and de-misting system providing fresh air or heat to driver or passenger's side at choice.

**Body** – "Superleggera" aluminium panelled tubular steel four-seater body in unit with steel platform chassis frame. Body-chassis unit completely rust-proofed and insulated for noise and heat. Bucket type Chapman Reutter reclining front seats fully adjustable, upholstered in finest quality leather. Fully upholstered rear seats. Wrap-round windscreen. Opening rear quarter lights. Petrol filler lid operated from interior. Ample luggage accommodation. Heavy duty wrap-round bumpers and over-riders.



## DIMENSIONS

**A** 15in. to 21in.

**B** 16in. to 22in.

**C** 9½in. max.

**D** 29½in.

**E** 16½in.

**F** 176½in. overall length

**G** 52in. overall height

**H** 98in. wheelbase

**J** 66in. overall width

**K** 54in. front track

**L** 53½in. rear track

Kerb weight 2884lb.

Turning circle 34ft.

These goods are sold subject to and with the benefit of the conditions of sale printed in the Catalogue and/or Price Lists of the Company.

ASTON MARTIN LAGONDA LIMITED, HANWORTH PARK, FELTHAM, MIDDXX.

(A subsidiary of the David Brown Corporation Limited)

Cables: Astomartia, Feltham. London Showrooms: 96-97 Piccadilly, London, W.1.