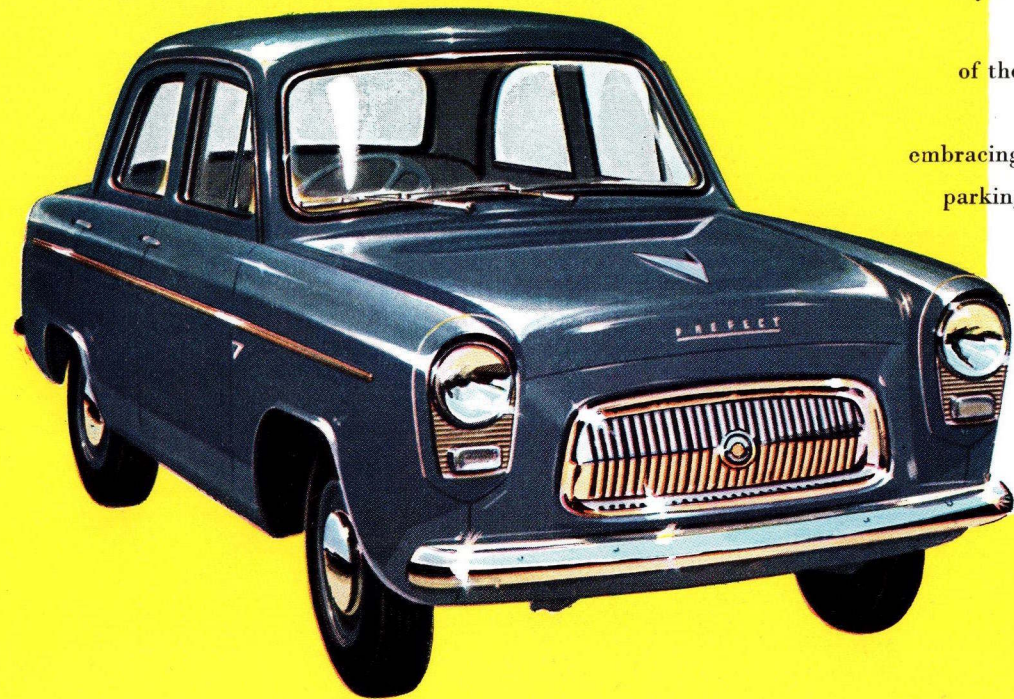


**THE  
DE LUXE  
ANGLIA  
AND  
PREFECT**

**A PRODUCT OF FORD MOTOR COMPANY LIMITED, DAGENHAM, ENGLAND**

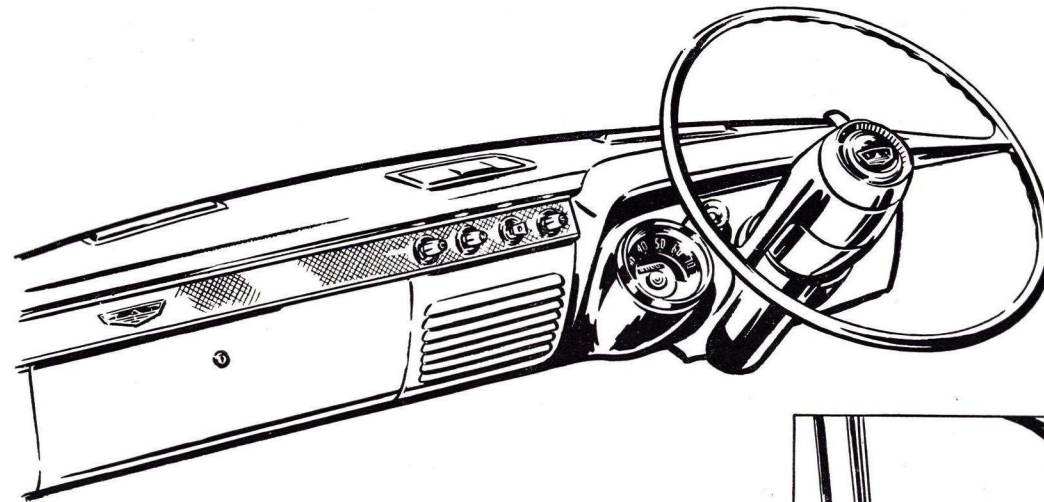


## PREFECT DE LUXE



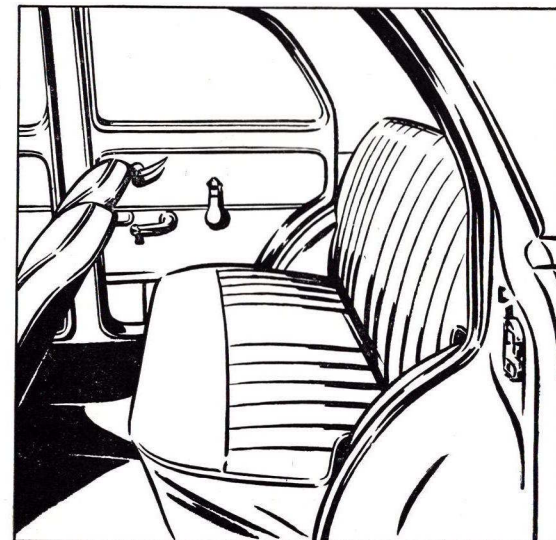
**T**his is the Prefect de luxe. Four-door style leader of Ford of Dagenham's light car line. Note the classic styling of the front end. Distinctive headlamp surrounds with a chromium insert embracing both the headlight and combined parking light and flashing turn indicator. Rugged chrome bumper and sparkling chrome grille all combine to set off the graceful lines of this car.

... **STYLED FOR TODAY**



**T**he elegant exterior styling of the Anglia and Prefect de luxe is not let down by the comfort and convenience to be found inside.

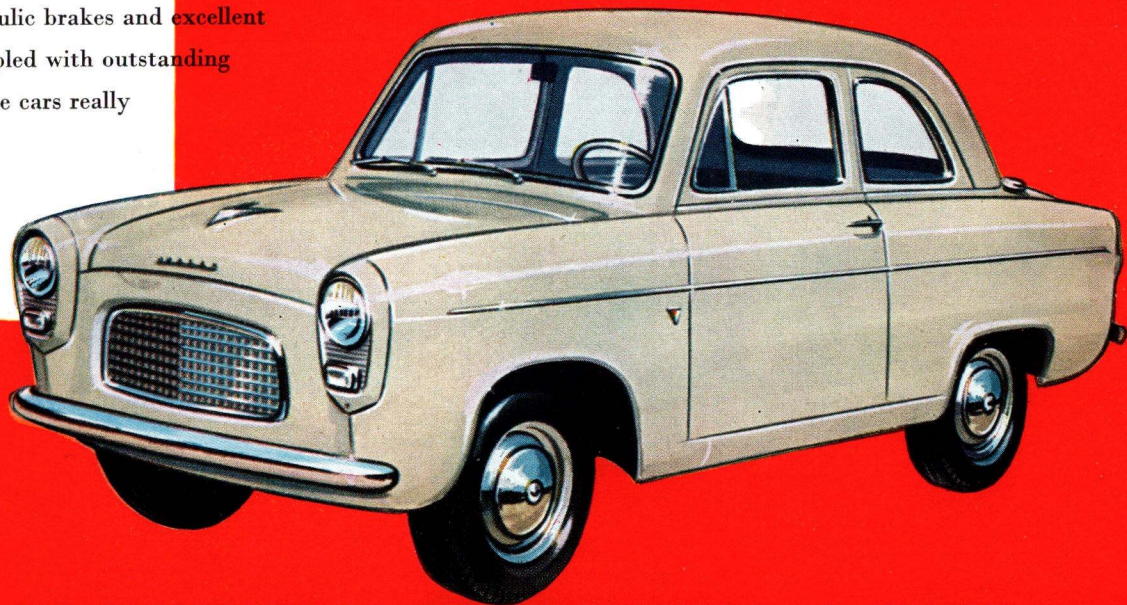
The new facia panel shewn here features neatly grouped instruments, clearly seen from the driving position, a lockable glove compartment, and easily reached controls. Rear seat styling lends grace to the interior decor. Passengers are assured of a safe ride in the utmost comfort.





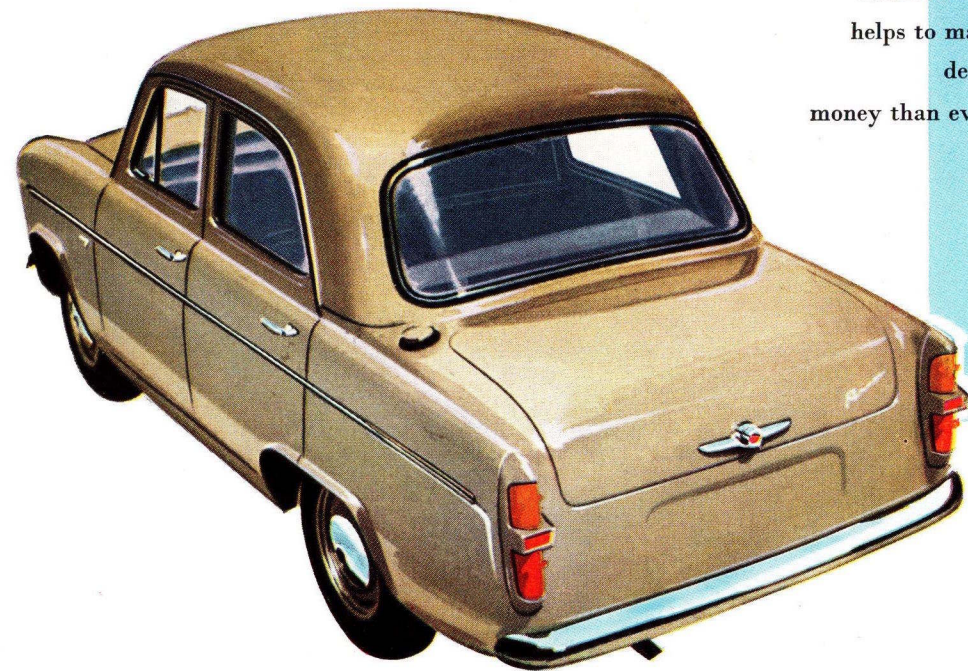
**T**he Anglia de luxe offers styling which makes it suitable for any occasion. It is a car which is at home in any company and in every setting. Thoroughbred performance, too, from the 1172 c.c. 36 b.h.p. engine designed to give brilliant acceleration and maintain high cruising speeds without extravagant use of fuel. The hydraulic brakes and excellent all round visibility coupled with outstanding road holding make these cars really safe on the road too.

## ANGLIA DE LUXE



**... SUPERBLY GRACEFUL LINES**





Another "New look" feature that helps to make the Anglia and Prefect de luxe even better value for money than ever before is the larger rear window for improved all round visibility.

... NEW LOOK FEATURES

## de luxe Anglia and Prefect

<b>engine</b>	Four cylinder, side valve. Bore 2.5 ins. (63.5 mm.). Stroke 3.64 ins. (92.5 mm.). Cubic capacity 71.55 cu. in. (1172 c.c.). Compression ratio 7.0 : 1. B.H.P. 36 at 4,500 r.p.m. Torque 53 lbs./ft. at 2,500 r.p.m.
<b>engine lubrication</b>	Full pressure feed by submerged gear-type pump to main camshaft and connecting rod bearings. By-pass type external filter. Pressure relief valve in pump.
<b>ignition</b>	12-volt coil ignition. Centrifugal automatic advance and retard distributor. Spark plug size 14 mm.
<b>fuel system</b>	Diaphragm-type mechanical fuel pump. Down-draught carburettor with combined air cleaner and silencer. Fuel tank capacity 7 gallons (31.82 litres).
<b>cooling system</b>	Pressurised. Belt driven, two blade fan (four blade optional for hot countries). Water pump. Thermostatic control. Capacity of system 1.46 gallons (6.6 litres).
<b>transmission</b>	Single dry plate clutch. Central gear lever. Three-speed gearbox. Synchromesh on second and third gears. Helically cut, constant-mesh gears. Overall ratio : 1st gear 17.246 : 1, 2nd gear 8.889 : 1, 3rd gear 4.429 : 1, reverse 21.228 : 1. Gearbox oil capacity 1.68 pints (0.95 litre). Semi-Automatic transmission available at extra cost.
<b>rear axle</b>	Three-quarter floating axle, crown wheel and pinion final drive. Dynamically balanced, open drive shaft. Needle roller bearing universal joints. Axle ratio 4.429 : 1. Oil capacity 1.36 pints (.773 litre).

<b>front suspension</b>	Built-in independent coil spring suspension. Hydraulic double-acting shock absorbers. Stabiliser bar embodied.																												
<b>rear suspension</b>	Longitudinal, semi-elliptic springs. Telescopic, double-acting hydraulic shock absorbers.																												
<b>brakes</b>	Hydraulic internal expanding, 8 ins. $\times$ 1.25 ins. (203 mm. $\times$ 31.75 mm.). Front, two leading shoes. Rear, single leading shoe. Total brake lining area 76.8 sq. in. (495.5 cm.). Foot brake on all four wheels, hand brake on rear wheels only.																												
<b>steering</b>	Worm and peg type. Ratio 11.5 : 1. Two-spoke type steering wheel, diameter 16 ins. (406.4 mm.).																												
<b>electrical equipment</b>	Two-brush, ventilated generator. Compensated voltage control. Drive adjustable. 12-volt starter motor. Dual Windtone horn operated by central button on steering column. Battery : 12-volt, 40 amp. hr. at 20 hr. rate.																												
<b>controls</b>	Choke and starter knobs ; ignition, lighting and instrument light switches ; windshield wiper knob ; foot-operated headlight dimmer switch.																												
<b>general dimensions</b>	<table><tr><td>Overall length</td><td>...</td><td>12 ft. 5<math>\frac{3}{4}</math> ins.</td><td>3.806 m.</td></tr><tr><td>Overall width</td><td>...</td><td>5 ft. 0<math>\frac{3}{4}</math> ins.</td><td>1.545 m.</td></tr><tr><td>Overall height (unladen)</td><td>...</td><td>4 ft. 10<math>\frac{3}{4}</math> ins.</td><td>1.494 m.</td></tr><tr><td>Wheelbase</td><td>...</td><td>7 ft. 3 ins.</td><td>2.209 m.</td></tr><tr><td>Track—front</td><td>...</td><td>4 ft. 0 ins.</td><td>1.219 m.</td></tr><tr><td>Track—rear</td><td>...</td><td>3 ft. 11<math>\frac{1}{2}</math> ins.</td><td>1.207 m.</td></tr><tr><td>Kerb weight</td><td>Approx.</td><td>1765 lbs.</td><td>800.6 kg.</td></tr></table>	Overall length	...	12 ft. 5 $\frac{3}{4}$ ins.	3.806 m.	Overall width	...	5 ft. 0 $\frac{3}{4}$ ins.	1.545 m.	Overall height (unladen)	...	4 ft. 10 $\frac{3}{4}$ ins.	1.494 m.	Wheelbase	...	7 ft. 3 ins.	2.209 m.	Track—front	...	4 ft. 0 ins.	1.219 m.	Track—rear	...	3 ft. 11 $\frac{1}{2}$ ins.	1.207 m.	Kerb weight	Approx.	1765 lbs.	800.6 kg.
Overall length	...	12 ft. 5 $\frac{3}{4}$ ins.	3.806 m.																										
Overall width	...	5 ft. 0 $\frac{3}{4}$ ins.	1.545 m.																										
Overall height (unladen)	...	4 ft. 10 $\frac{3}{4}$ ins.	1.494 m.																										
Wheelbase	...	7 ft. 3 ins.	2.209 m.																										
Track—front	...	4 ft. 0 ins.	1.219 m.																										
Track—rear	...	3 ft. 11 $\frac{1}{2}$ ins.	1.207 m.																										
Kerb weight	Approx.	1765 lbs.	800.6 kg.																										

PUBLISHED BY EXPORT DIVISION, FORD MOTOR COMPANY LIMITED, DAGENHAM, ENGLAND