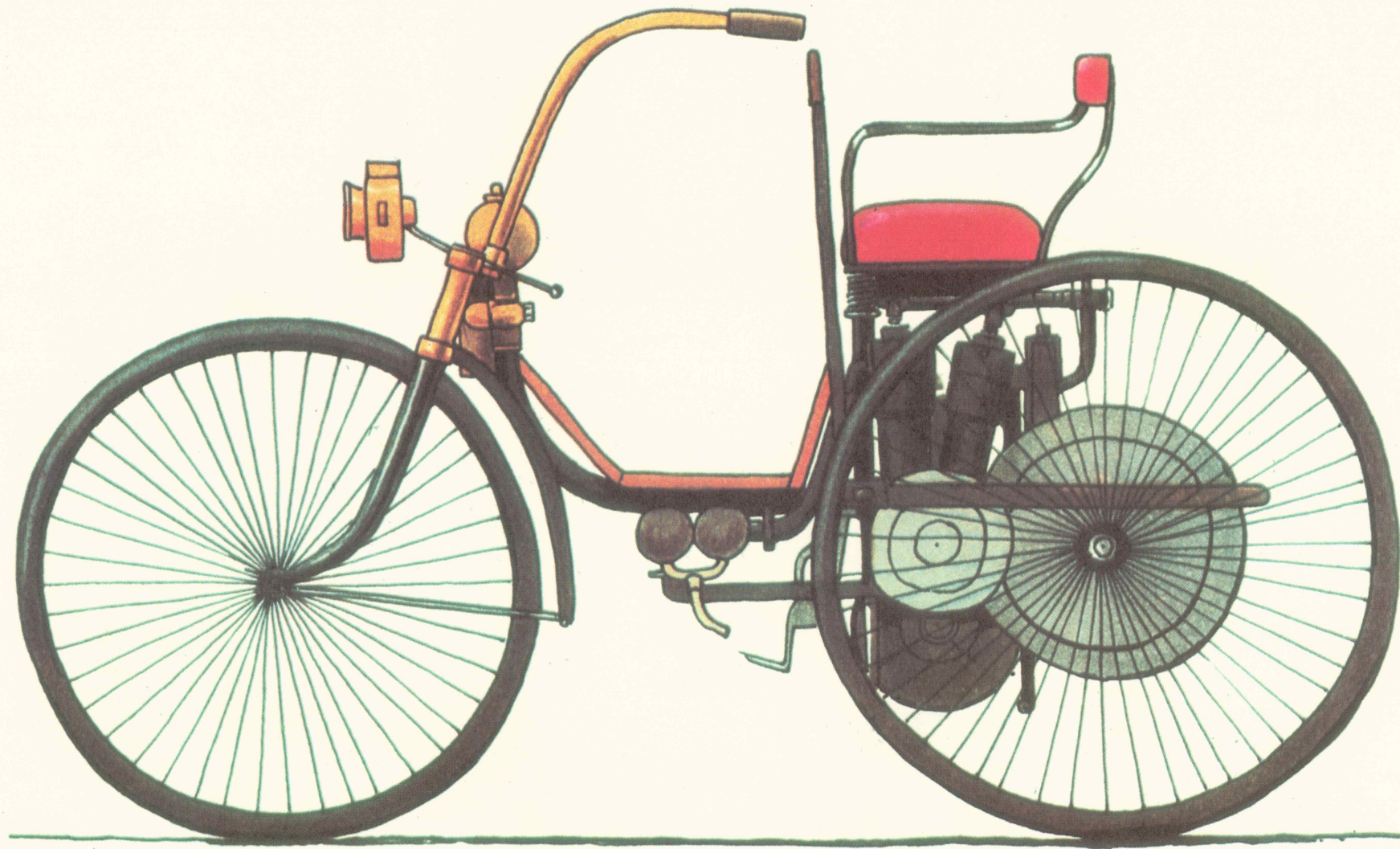
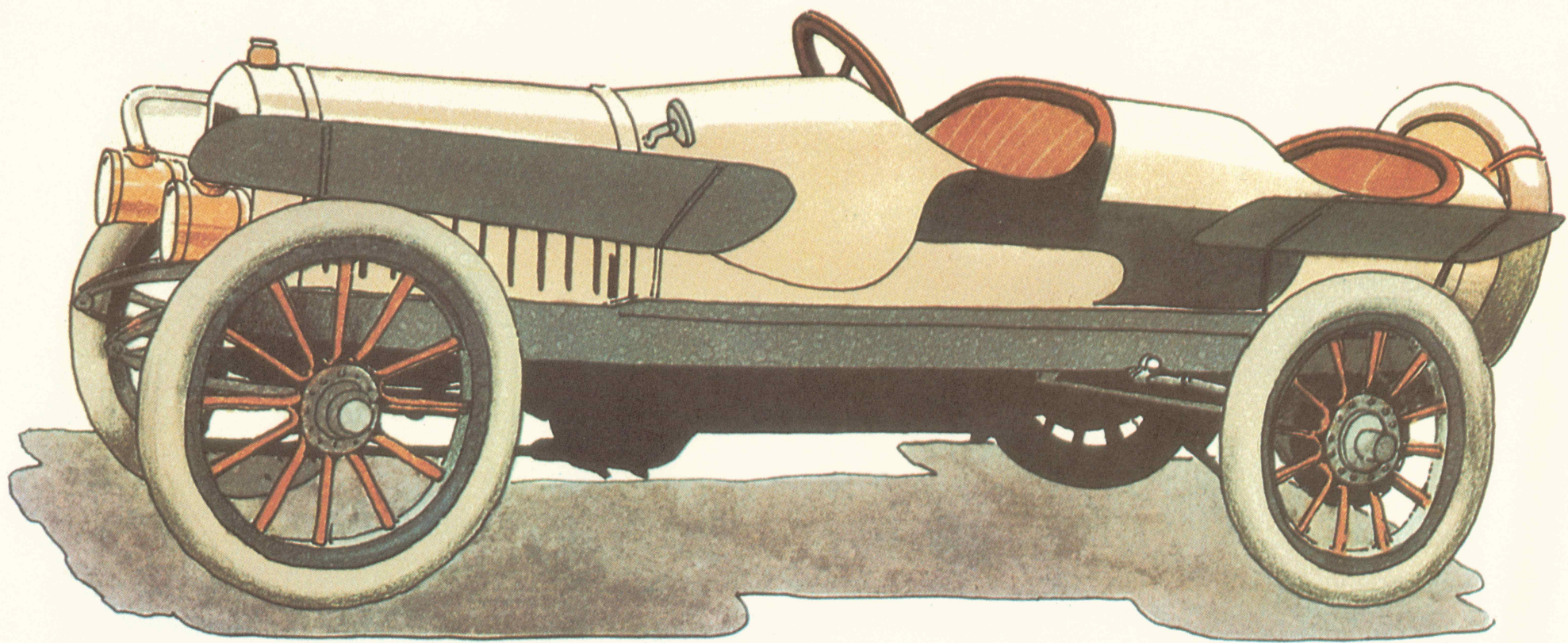


Otte veteranbiler
fra VW Audi Import

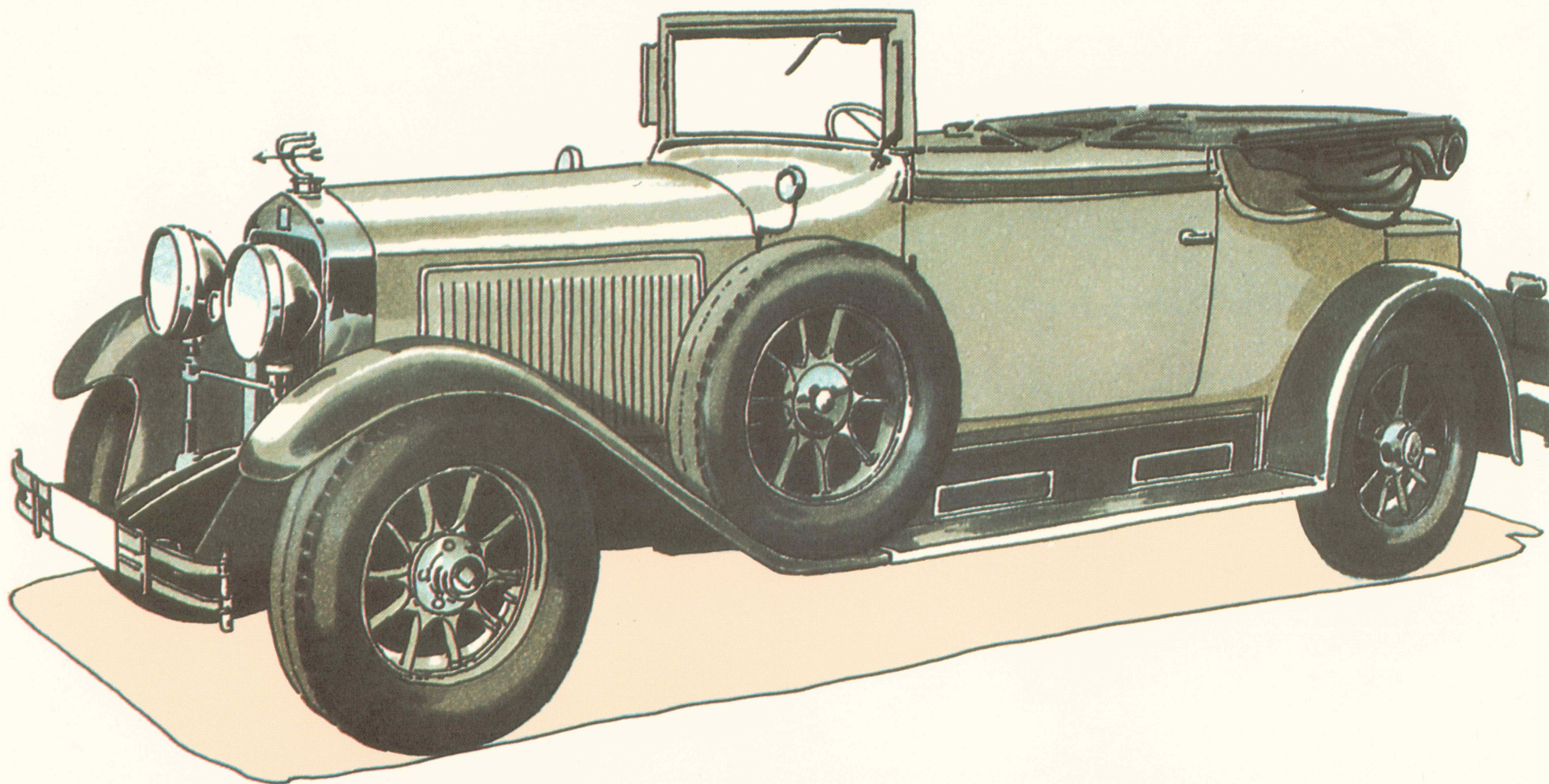
DAIMLER STAHLRADWAGEN. 1889.



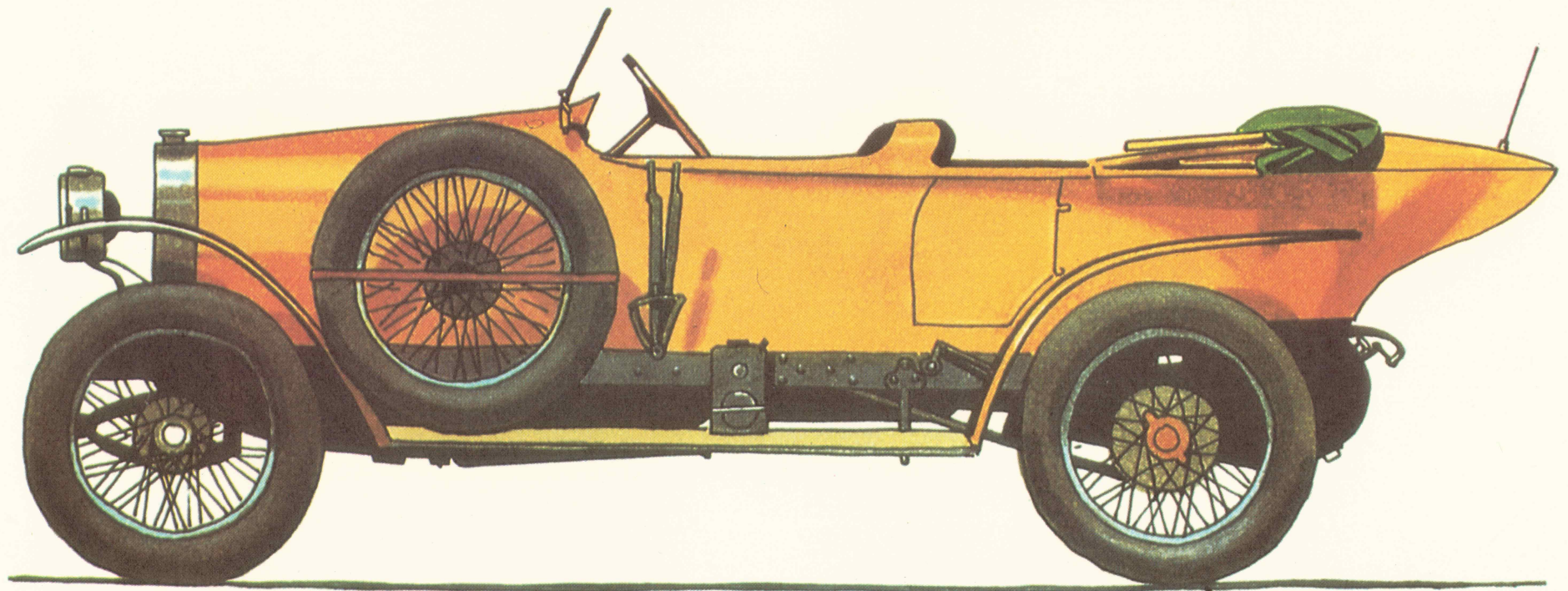
HORCH TORPEDO. 1908.



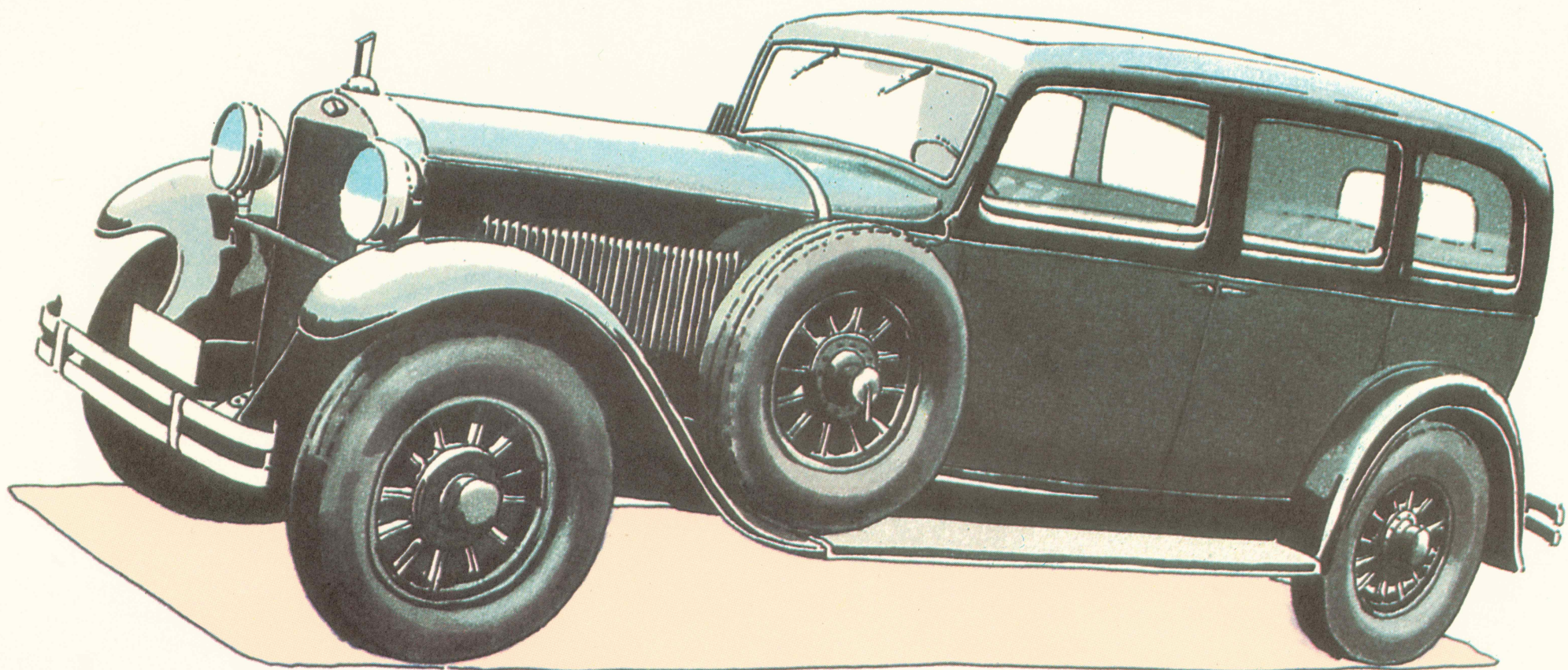
HORCH 8 CABRIOLET. 1927.



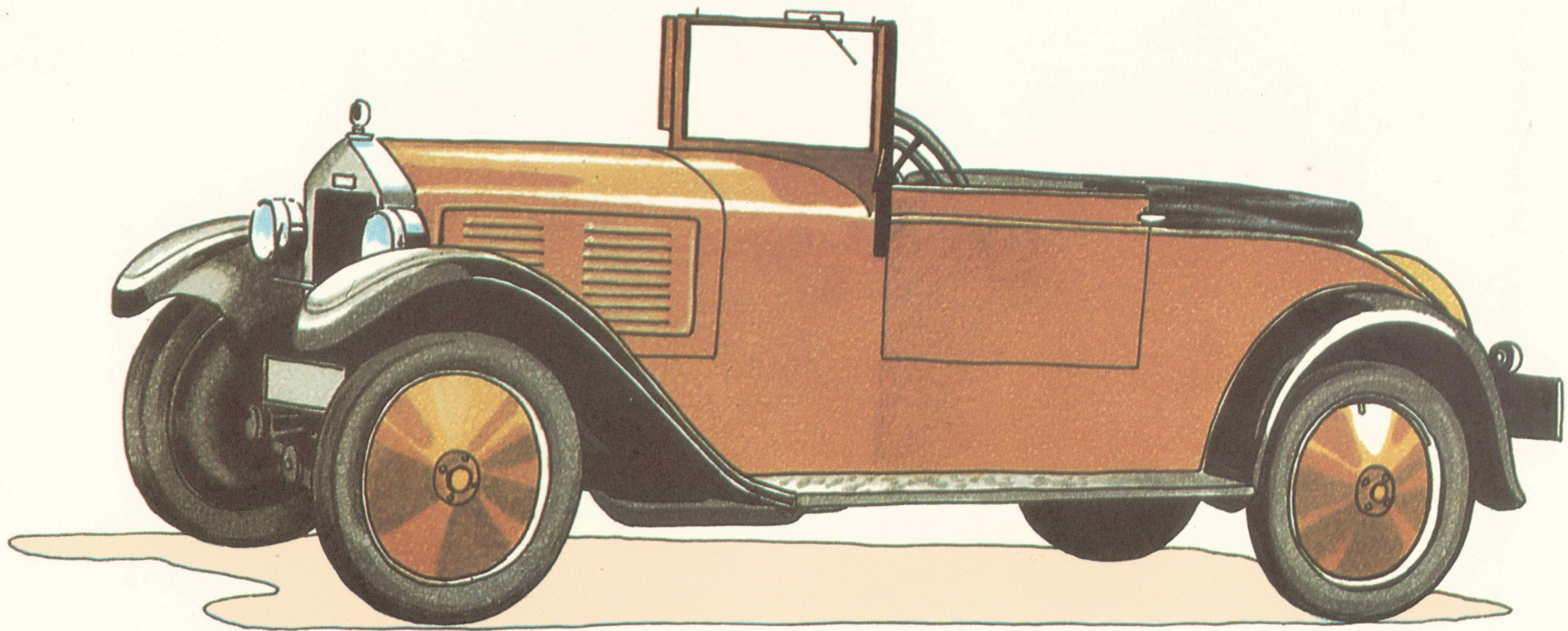
AUDI ALPENSIEGER. 1914.



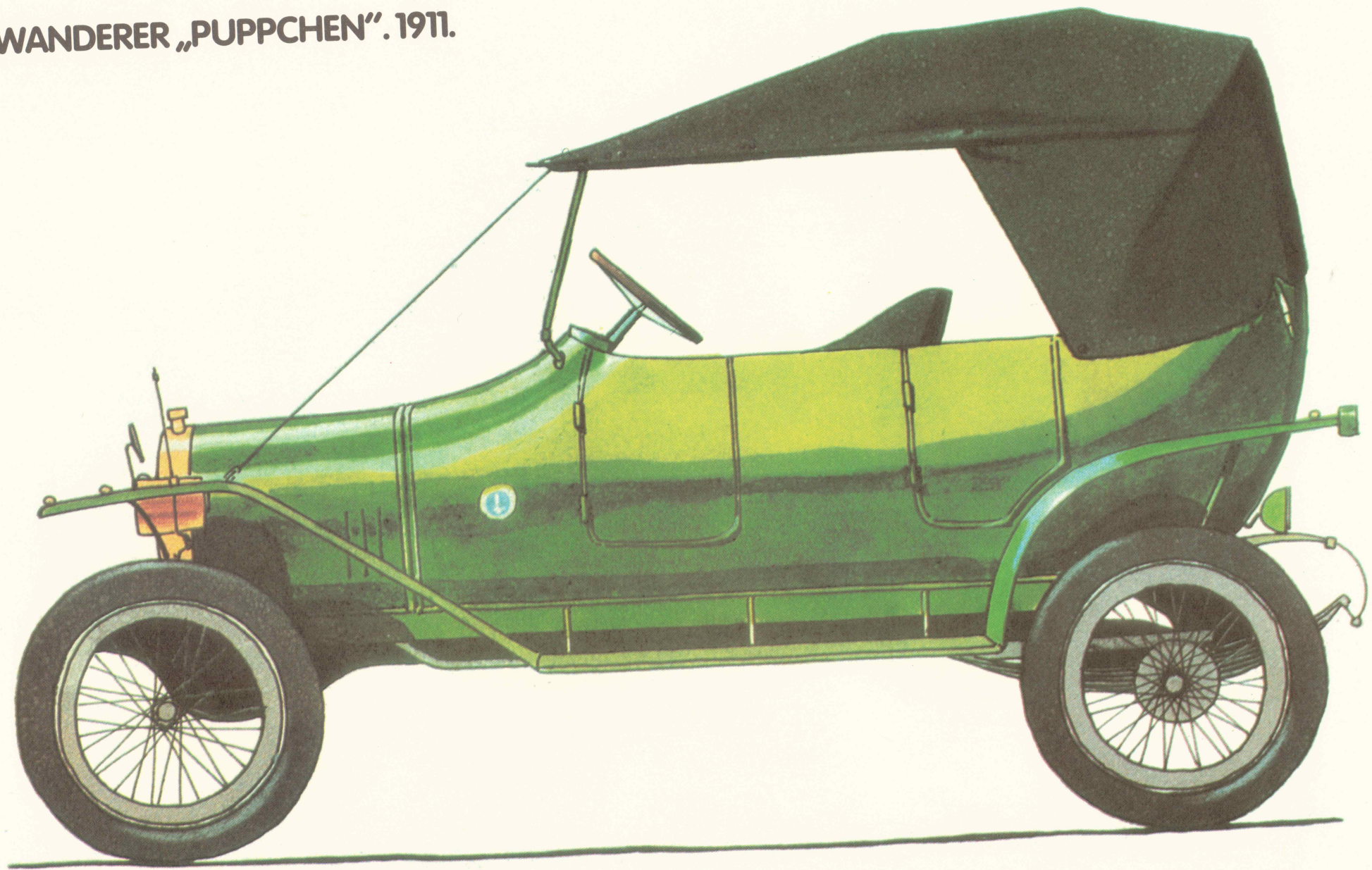
AUDI „ZWICKAU“. 1928.



DKW FRONT. TYP F 1. 1931.



WANDERER „PUPPCHEN“. 1911.



WANDERER. TYP W 11. 1928.

