

# CHRYSLER

---

Chrysler. New Ideas, New Feelings, New Excitement.

---



# Chrysler. More than 60 Years of Exciting Automotive History.

A secluded street in Detroit, Michigan, on a dark night in the 1920's: the first car to bear the Chrysler name soars along at the breathtaking speed of 100 km/h.

This was the debut of the Chrysler Six – a revolution on wheels and Walter P. Chrysler's vision of the ideal car for a growing number of motorists. He and his equally dedicated team of engineers had succeeded in building the world's first high-compression engine for a mid-size car that was both luxurious and affordable.

The public was enthusiastic, about the styling, the luxury, the price and performance. Automotive professionals were equally impressed by the sophisticated engineering, and ingenuity of the high-compression engine with replaceable oil filter, the outstanding cooling system and perfect lubrication of all moving parts. Everything was conceived to be highly functionable, dependable and long lasting.

Chrysler's reputation as a brilliant engineer was made. Everyone who, like Chrysler himself, was an automotive engineering fanatic, wanted to work with him. No wonder! Chrysler kept developing outstanding new engineering achievements and technical innovations. Chrysler and his team were the first to reduce vibrations by detaching the engine from the chassis and isolating it on an enclosed rubber mount.

Chrysler invented not only the first high-compression engine with exchangeable oil filter, but also the first down-draft carburetor, power steering and the first maintenance free alternator.

In 1934, the legendary Chrysler Airflow cars created a sensation. They featured ultra-modern bodies capitalizing on aerodynamic laws, as well as a revolutionary new concept of weight distribution. A complicated engineering accomplishment which improved the ride for passengers, especially in the rear seats. No longer were seats right above the rear axle... no longer were passengers jolted by every bump in the road.

But Chrysler won the greatest applause world-wide for its motors and transmissions – renowned for innovative technology and long lasting dependability. Case in point: the legendary Hemi V-8 which made automotive history. Although its cylinder block and hemispheric cylinder head were initially developed independently of each other, Chrysler engineers still rave about it today. This high performance engine set new records and was a success for 20 years.

The company's engineering achievements not only benefited the automotive industry, but Chrysler has also contributed to space exploration from the beginning.

A modified Chrysler booster launched the first man into suborbital flight. The Saturn S-1B, produced by Chrysler for NASA, sent the Apollo and Skylab astronauts on their earth orbital flights. Another Saturn S-1B served to launch the US/Russian ASTP mission in July 1975. Tested between 1961 and 1975 were a total of 31 Chrysler built rockets destined for seven different space projects. The test results were all 100 percent successful.

The experience acquired in space technology has in

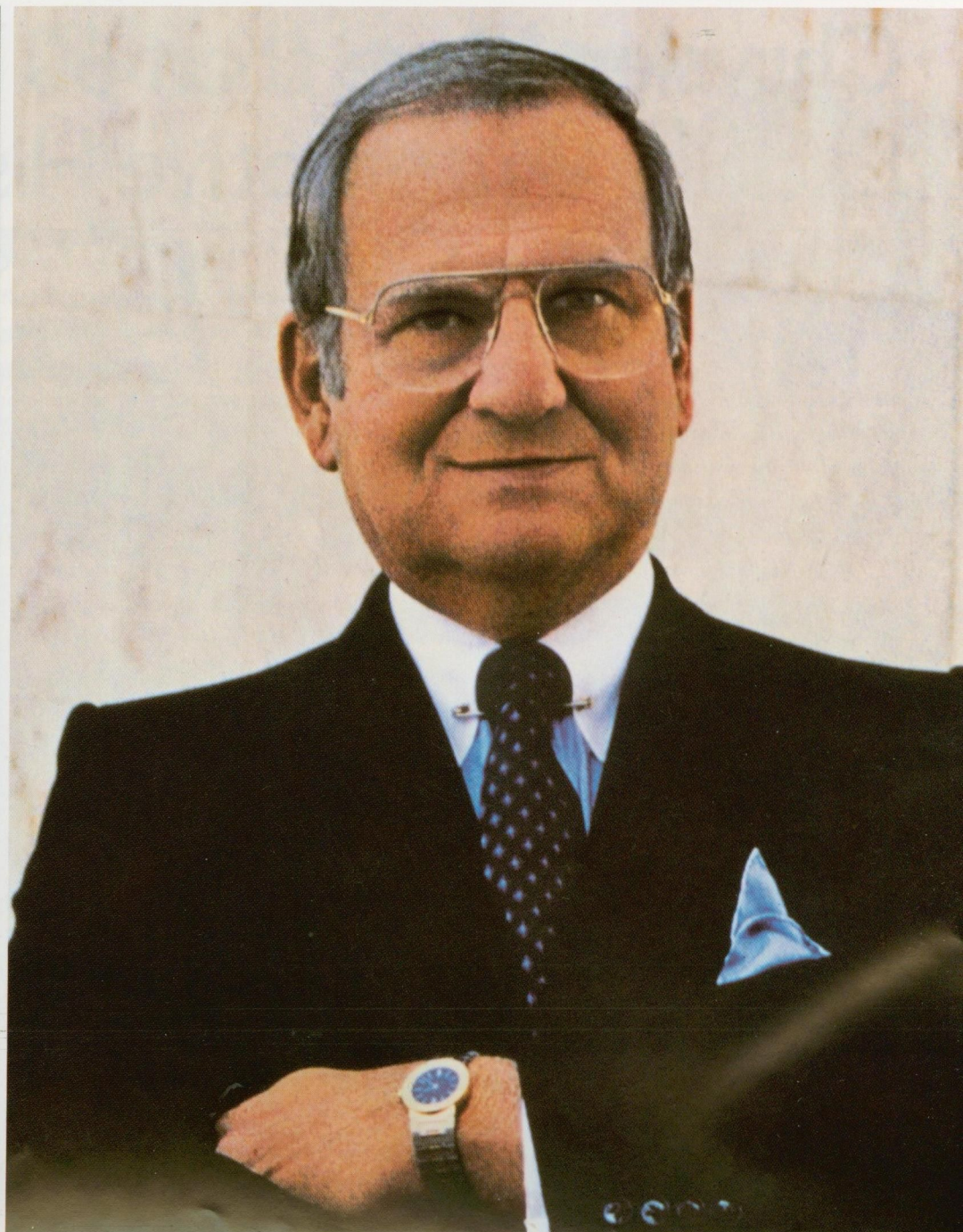
turn benefited Chrysler vehicles. For example the world's first electronic ignition system in production cars.

Chrysler is also engaged in aircraft construction. The Gulfstream Aerospace Corporation, a member of the Chrysler Group, develops and builds globally acclaimed commercial and private jet aircraft.

Chrysler's commitment to increase its high tech investments was the reason behind the recent formation of Acustar, one of the largest, most advanced manufacturers of automotive parts and entire component systems.

Electrospace Systems Inc., which develops, builds and applies high-performance electronic systems world-wide, has also recently become a wholly-owned Chrysler subsidiary.

The prestigious Maserati, Lamborghini and Jeep have become the latest members of the Chrysler team. Further evidence of Chrysler's ongoing commitment to use top-notch talent in developing cars and trucks of exciting excellence.



# Two Men who Dreamed the Impossible Dream.

In the backyard of a Kansas farmhouse, a 28-inch locomotive chugged and puffed – fully operational on self-laid tracks. Seventeen-year-old Walter P. Chrysler had built it with his own hand-made tools.

In 1908, Chrysler's interests shifted from the railroad to the automobile. Taking all his savings, and a sizeable loan, he purchased the love of his young life – a locomobile. Not to drive, but to take apart and study.

Another 16 years would pass, however, before the first car bearing his name was produced and sold. Chrysler was determined to build no ordinary car, but a dream come true.

Walter P. Chrysler was not only an exceptional engineer, he also had a will of iron. His ability to sell others on his ideas, his initiative, creativity, tireless enterprise, and drive made the impossible become reality. At a breathtaking pace. Just 60 days after it first appeared on the drawing board, the initial prototype of the first Chrysler car, the Chrysler Six, was built. In 12 months time it was ready for production and in its first year, it became an automotive best-seller. 32,000 cars – a remarkable figure for a newcomer in the Twenties – were bought by enthusiastic customers. Hardly surprising, for the Chrysler Six had much to commend it in technology and luxury.

Nothing could stop Chrysler now. In less than four years, Chrysler had grown to become America's third largest carmaker.

Today Chrysler is not only one of the biggest carmakers, but ranks among the Top Twenty corporations worldwide. A corporation that has had its share of triumphs

– and challenges. Again it was the one man who, with initiative, creativity, enterprise, and enthusiasm, led Chrysler to the top. Lee Iacocca, who – like Walter P. Chrysler knows the automobile business from the ground up, has headed Chrysler since 1978.

The difficulties of the Corporation initially appeared insurmountable. But Lee Iacocca did it with the simplest, yet most difficult, success formula. He gave car buyers what they wanted. His philosophy of "building better cars for less money" took to the road.

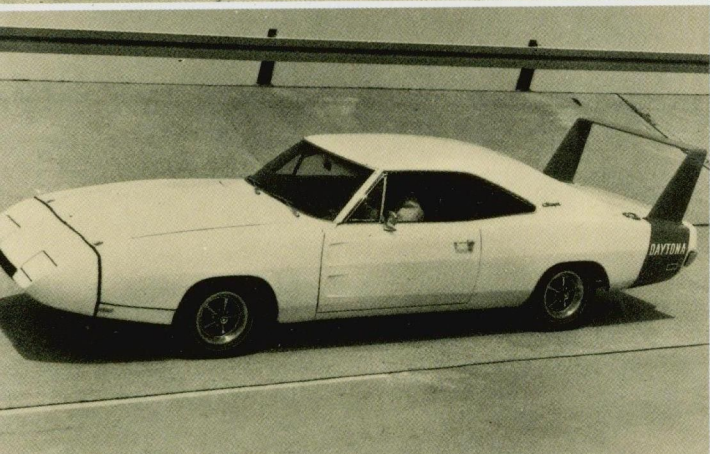
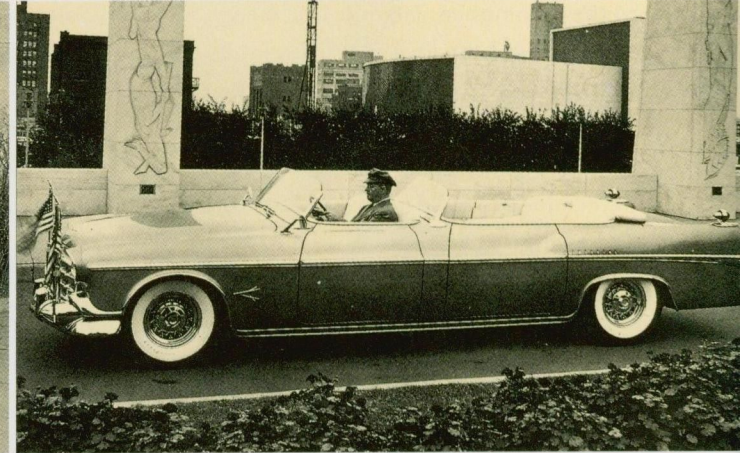
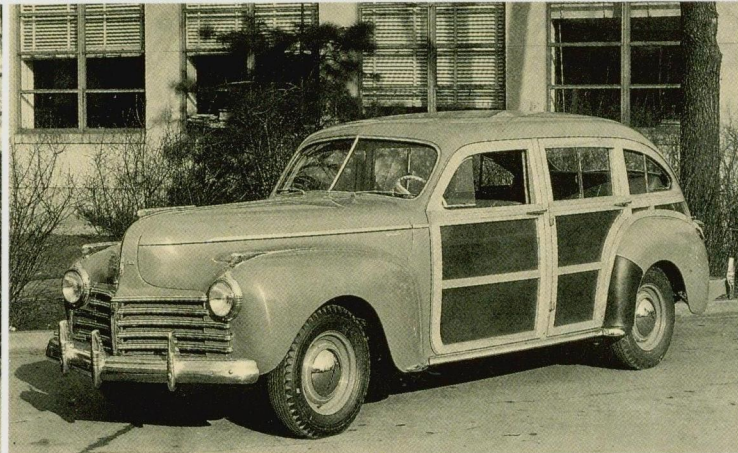
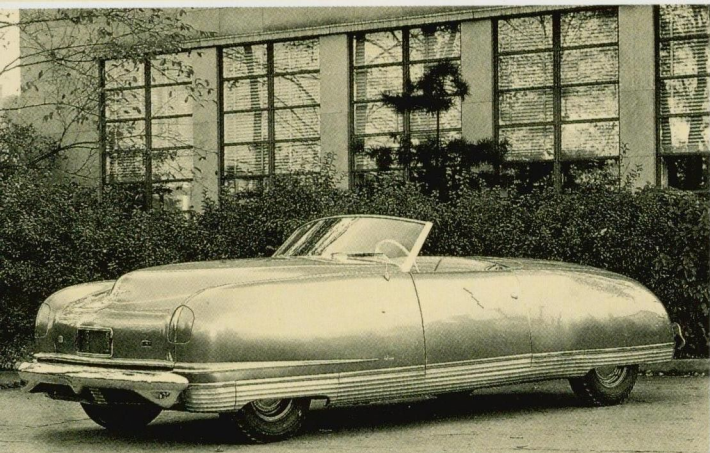
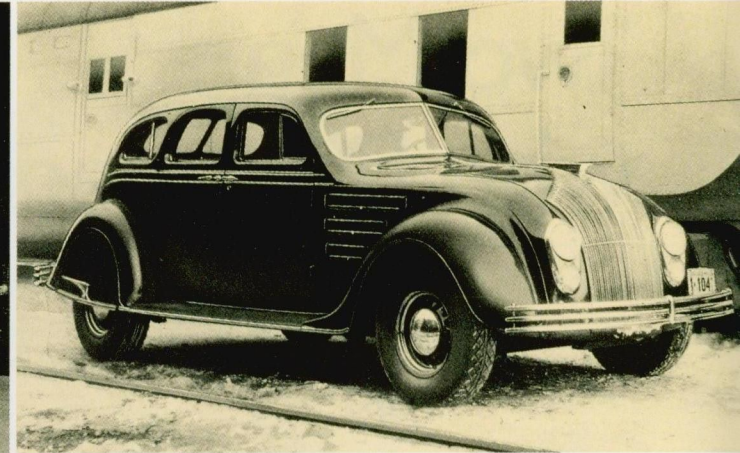
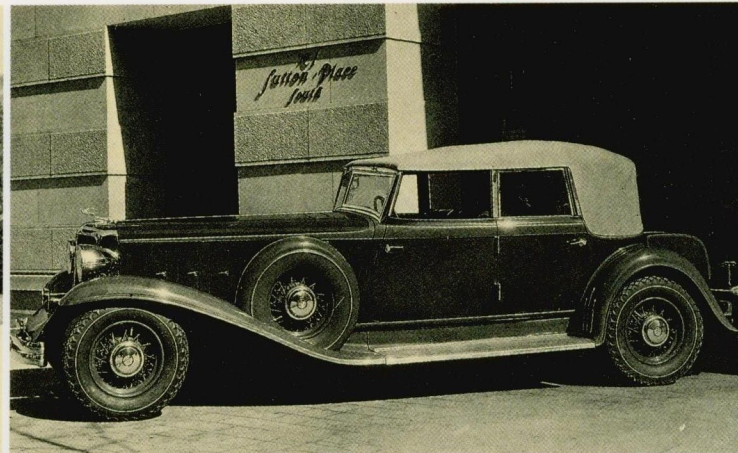
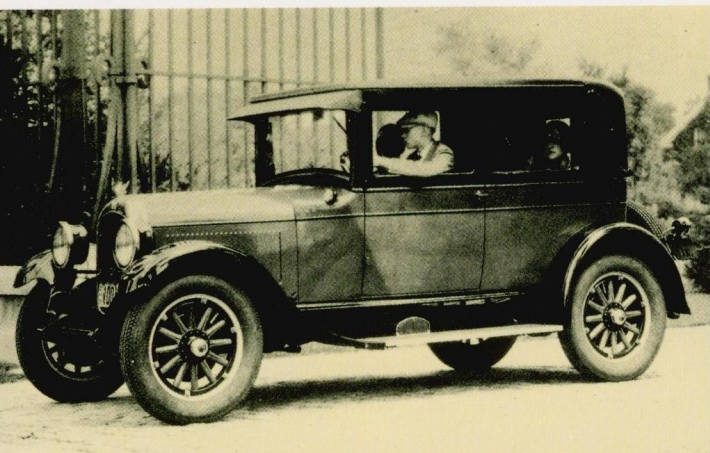
In barely four years, Chrysler rode out of the crisis and back into the black. Lee Iacocca had made the impossible come true.

The new Chrysler K-car models first rolled off the assembly line in 1981. Their sophisticated engineering and quality workmanship, combined with an outstanding range of standard features, successfully competed against American, Japanese, and German cars in a way no one dared to dream.

But Lee Iacocca is hardly the man to rest on his laurels. The rewards were reinvested. In new know-how, advanced technology and state-of-the-art production facilities. The Chrysler Technical Computer Center is today one of the largest integrated networks in the automotive industry. The Chrysler CAD system permits total information exchange between Design, Development, and Production. It's the best and fastest way of identifying the complex problems of automobile design in the pre-production stages. Computer-controlled robot assembly and test systems, laser

monitors, and special simulators assure more precision, constantly improved quality, dependability, and durability.

Chrysler's Design, Development and Production facilities are among the most advanced in the world. Today Chrysler produces more vehicles than ever before: well over 2 million per year.



# Chrysler Classics.

1. The first car to bear the Chrysler name. The first car with high-compression engine with a replaceable oil filter. Top speed of more than 100 km/h, with a complete feeling of security. That was the Chrysler Six – a best seller of the Twenties, both robust and luxurious.

2. Chrysler's flair for convertibles culminated in the stylish 1932 Chrysler CL Imperial. A model in the celebrated Chrysler Imperial series, that competed in European motorsports. In 1928, a Chrysler Imperial finished second in the 25-hour endurance test at Spa-Francorchamps, Belgium.

3. The car that was way ahead of its time: 1934 Chrysler Airflow Sedan. A pioneering achievement in aerodynamic body design, a trend-setter heralding the automotive look of today. A breakthrough car transcending all conventional standards – not just in styling, but in engine design and performance.

4. The car that upstaged all the rest, the dream car of the Forties – The Chrysler Thunderbolt with novel aluminum body, concealed headlights, and integrated fenders. A metal power roof that vanished completely in a single piece into the rear of the car was another unique engineering accomplishment.

5. One of the most intriguing newcomers of the forties, the first Chrysler Town & Country. A station wagon that was a welcome departure from the customary shapeless, box-like body. Streamlined contours, with tailgate and lavish space for 6 to 9 passengers, plus the popular wooden paneling outside. Chrysler Town & Countries of yesteryear are coveted collector's items today.

6. The Parade Phaeton of the fifties shown above was one of the many parade cars designed and built by Chrysler for Presidents, movie stars and tycoons. The Phaeton, a stretched luxury state-coach, was inspired by the famous Chrysler designer, Virgil Exner. Styling and comfort of Chrysler Parade cars often influenced new standards for luxury cars.

7. Created especially for the Daytona races was one of the speediest, most exciting Chrysler products of the sixties – the Dodge Charger Daytona, it was built in a "limited edition" of just 505, all of which naturally sold like hotcakes.

8. The Chrysler GS Turbo 2 i is one of the few performance cars that does not dispense with luxury equipment. World famous race driver enthusiast Carroll Shelby, working with the Chrysler Shelby Engineering Team, inspired its sporty personality and thrilling turbo excitement.

9. One of the most successful cars in recent automotive history is the Chrysler Voyager. The Voyager is a spacious, versatile minivan that fits in every garage. And with front wheel drive, it gives you car-like handling and performance.



# Discover Chrysler Today.

With impressive personality, luxurious standard equipment and a driving feeling that is the epitome of comfort and elegance, Chrysler is taking new directions.

Every Chrysler model is a consummate synthesis of distinctive luxury and solid American craftsmanship. A never-ending fascination.

Chrysler's philosophy of "building better cars for less money" is exemplified by the price/performance ratio. Here's more car - as you'll readily see from all the lavish equipment, inside and out. Standard are catalyzer, stainless steel exhaust system, power-assisted steering, power-assisted brakes, tinted glass all round, premium bucket seats, center console, color coordinated carpets, upholstery and interior panels. Standard on nearly all models are power windows and power door locks, as well as dual remote control power mirrors left and right and cast aluminum wheels.

Among the most dependable and durable engines on the market are the 2.5- and 3.0-liter fuel-injected engines, and the dynamic 2.2-liter turbo. Chrysler is the world's largest manufacturer of turbo engines. The power of seasoned turbo engineering is translated into uncommonly comfortable handling and performance - thanks to the perfect unity of the front-wheel drive/front-engine concept, sophisticated front and rear suspension, as well as precise power-assisted rack-and-pinion steering.

Anyone who puts more than 2 million cars per year on to the roads today can't afford to be less than reliable. That's why Chrysler backs its commitment to quality with

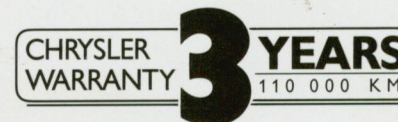
an exceptional warranty in the European markets: 3 years/110.000 kilometers.

Stringent quality controls employing the latest technology make Chrysler cars today more dependable than ever. Every car and truck is built with extensive use of rust-resistant galvanized steel. A fully insulated laser- and camera-controlled dust-free paint facility produces uniform long lasting clear coat finished. In addition, Clear Coat paint finish assures greater resistance to chipping and fading. And it's backed by a 7-year outerpanel rust-through warranty.

Under the hood, too, everything is thoroughly tested. At work in a special Engine Test Lab, for example, are 42 computers capable of processing 8 million test instructions per second. The on-board computer is checked via video microscopes. To ensure the cleanest possible emissions, test cars run around the clock, 24 hours a day, for one full week, simulating all sorts of road conditions.

Of course a company as large as Chrysler doesn't offer its cars to European buyers without having a highly efficient Dealer and Customer Service network in operation. Additionally, the Chrysler Hotline Service informs you where to get emergency assistance fast, wherever you happen to be in Europe. The hotline number is listed on the back of your Chrysler Service Card.

Genuine Chrysler replacement parts are likewise assured. Through MOPAR a wholly-owned Chrysler subsidiary represented world-wide that carries nothing but original Chrysler parts.















# More Than a Touch of Luxury.

The Chrysler GTS elegantly breaks away from the pack in styling and equipment. An impressive car at the very first glance. And thoroughly intriguing at the second. Because then you will discover a wealth of standard features typical for Chrysler, yet virtually unparalleled anywhere else.

Comfort dominates in every function, luxury, and style. The convenience of power windows, power remote control mirrors right and left, as well as power door locks has irresistible instant appeal. Just how rewarding power steering is on twisting roads or when parking, you'll discover on your first test drive.

Inside, the Chrysler GTS is delightfully spacious. With ample headroom, legroom and elbowroom. Color coordinated carpets, upholstery and panels are a pleasure for the eye. Premium bucket seats with head restraints and center console, tinted glass, a leather-wrapped sports steering wheel – all standard – make motoring a still more comfortable experience.

The built-in four speaker system, likewise standard of course, is a special bonus for music lovers.

The rear liftgate makes loading and unloading easier than ever. Rear seats fold down individually, extending length and increasing capacity of the cargo compartment.

To ensure visibility in rain, snow and fog, there are 2-speed intermittent windshield wipers, liftback wiper and defroster, plus side window demisters – all at no extra charge.

Your engine options: 2.2-liter and 2.5-liter engine. The 2.5, 4-cylinder engine features electronic fuel injection and

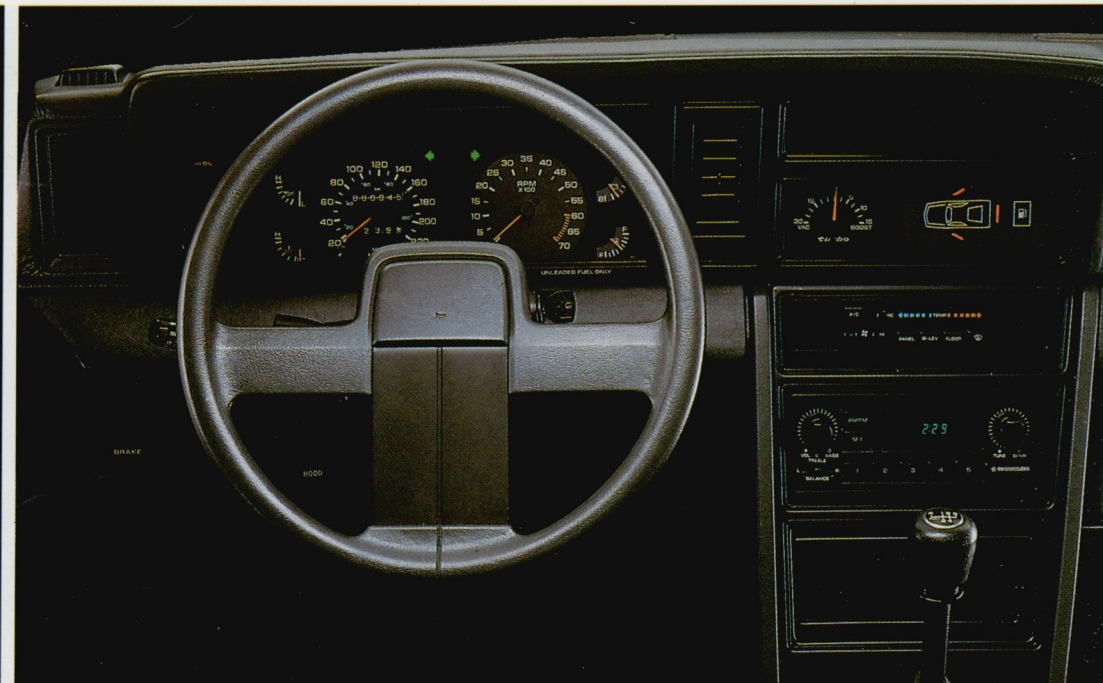
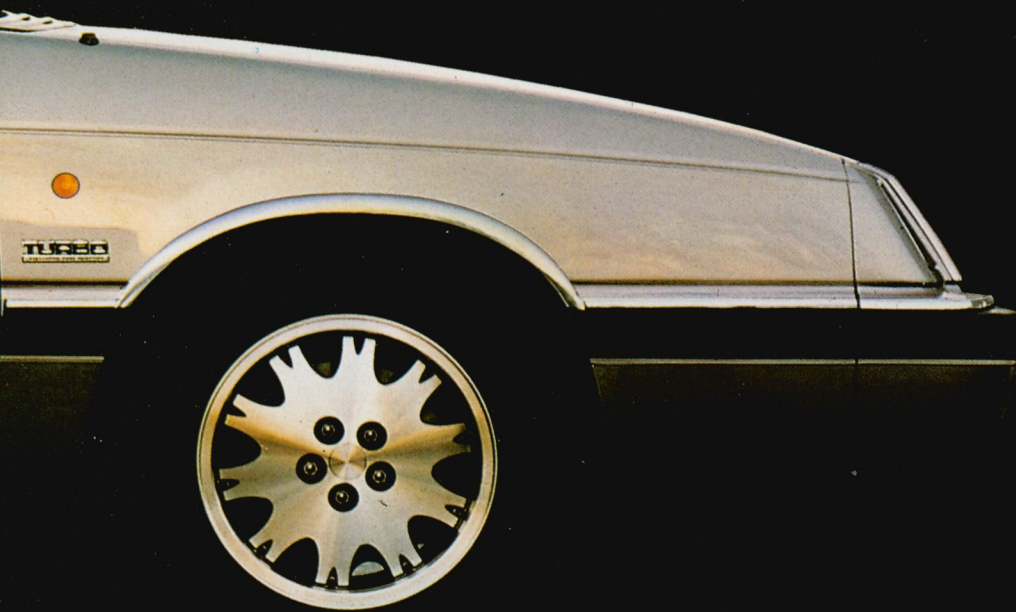
vibration dampening balance shafts, while the 2.2, 4-cylinder offers turbocharger and electronic fuel injection. Both are dependable and longlasting. They transmit their power via the perfectly coordinated front-wheel drive/front mounted engine concept. Generating 148 hp DIN (109 kW), it achieves a top speed of 190 km/h.

Like all new Chrysler's it's engineered by the Chrysler CAD system – permitting total information exchange between Design, Development and Production. In assembly, painting and quality control, Chrysler employs one of the most advanced technologies including computer-controlled robots, laser, special simulators.

The Chrysler 3 year/110,000 km warranty and 7 year rust-through guarantee is Chrysler's commitment to quality, even by European standards.

Leather seats available at extra costs.







# Driving With a Difference.

Chrysler has created an impressively distinctive model. A car with character. A car you never tire of seeing or driving.

Comfort and style are the hallmarks of both its appointments and its performance. You'll be pleasantly surprised by the generous compliment of standard equipment – a range of features hard to beat for quality or scope.

Power steering and power brakes, both standard, make driving an effortless experience. There's fingertip convenience everywhere: power windows, dual power remote control mirrors and power door locks.

Driver pleasure and convenience is further enhanced by tinted glass, cast aluminum wheels, premium bucket seats with center console, color coordinated carpeting, upholstery and interior panels.

But above all this is a car that spoils you more than anything else with its driving ease. The 2.2-liter, 4-cylinder engine with electronic fuel injection and turbocharger is one of the most dependable and durable on the market today. Its power is translated into uncommonly comfortable handling and performance. Thanks to the perfectly coordinated front-wheel drive/front engine concept, sophisticated front and rear suspension, as well as precise power-assisted rack-and-pinion steering. Generating 148 hp DIN (109 kW), it attains a top speed of 190 km/h.

This elegant coupe comes with your choice of sporty 5-speed manual transmission, or one of the top performing automatic transaxles on the market.

The Chrysler LeBaron Coupe is a dazzling touring car.

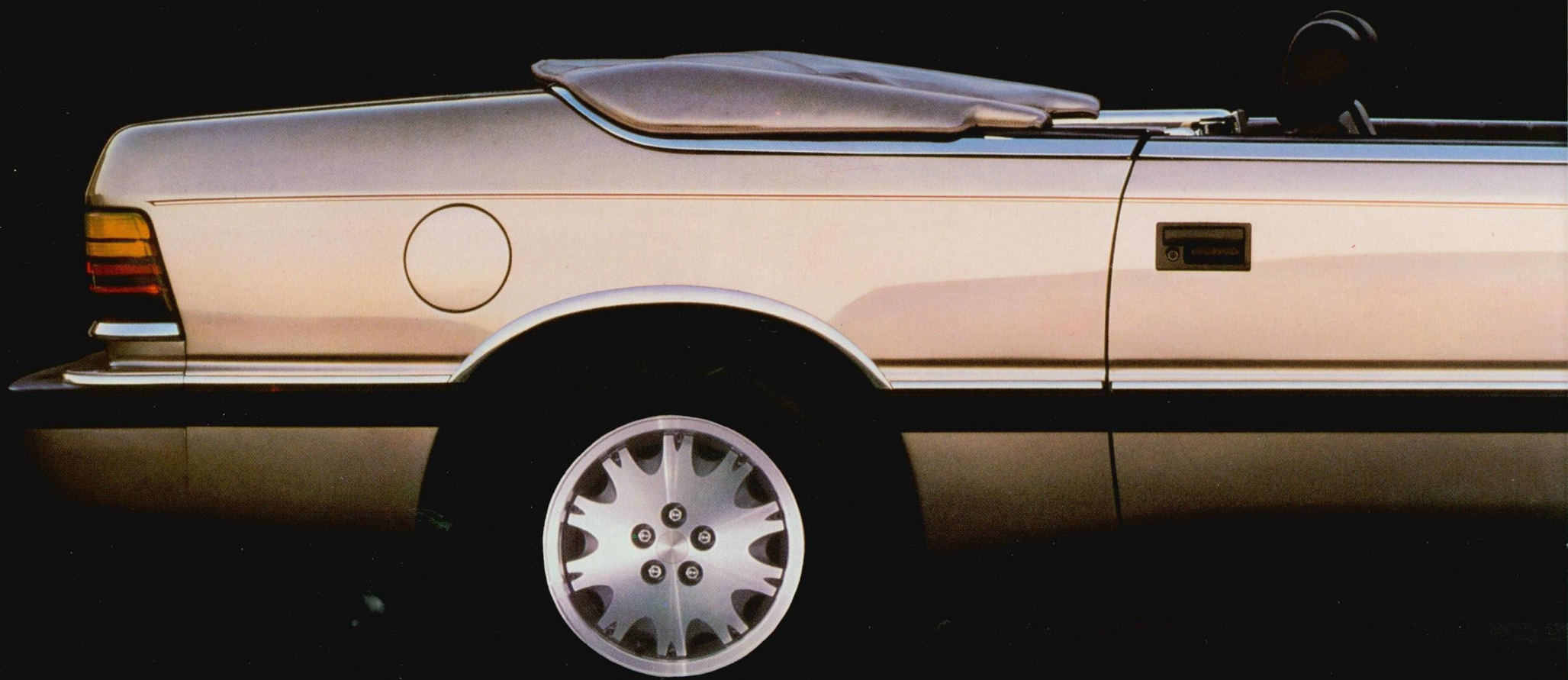
And for music lovers the built-in four-speaker system makes touring even more of a pleasure. Folding rear seats greatly increase the size of the cargo space to accommodate extra luggage.

For foul weather driving, there are 2-speed intermittent windshield wipers, rear window defroster and side window demisters as standard equipment.

A clean machine in every way, the Chrysler Coupe comes complete with catalyzer plus stainless steel exhaust system.

Under its stylishly sleek body, there's more built-in dependability and durability. After all, the new Chrysler are built and tested with the latest, most advanced technology. In a special Engine Test Lab, 42 integrated computers process up to 8 million test instructions per second. The Chrysler Brake Test System measures all key parameters on test tracks. Special simulators, video microscopes, polarized light... everything is put to work for more precision, more quality.

Test drive the Chrysler LeBaron Turbo Coupe. You'll discover it has true character. Not just in styling and equipment, but in performance.







# On the Sunny Side of the Street.

For the young at heart, the Chrysler LeBaron Turbo Convertible is definitely one of the most attractive buys on the market. And one of the best. Because it offers astonishing value for the money.

Chrysler delivers more – as you'll readily see from all the luxury equipment. Here is a car to indulge the driver, spoiling him for anything less. The power convertible roof is down in seconds at the touch of a button – a feature offered by no other convertible in this price class. We've thought of everything in designing the Chrysler LeBaron Convertible. The rear window, for instance, is glass – not plastic – and has built-in defroster. Power windows, power door locks, power steering, power brakes, dual power remote control mirrors outside are all part of the standard equipment package. Cast aluminum wheels, tinted glass, color coordinated high-grade carpets and interior panels never cease to delight. And for music on the road, the built-in four-speaker system delivers true audio enjoyment. The list of standard features continues with illuminated vanity mirrors for both driver and passenger, lockable, illuminated glove box and genuine leather seats.

First and foremost, however, this is a car that indulges the serious driver. The 2.2-liter, 4-cylinder engine with electronic fuel injection and turbocharger is not only one of the most dependable and durable on the market. Its power is also translated into uncommonly comfortable handling and performance. Thanks to the perfectly coordinated front-wheel drive/front-mounted engine concept, sophisticated suspension front and rear as well as precise power-assisted

rack-and-pinion steering. Its 148 hp DIN (109 kW) easily attain a top speed of 187 km/h. Also available is a 2.5-liter, 4-cylinder engine with electronic fuel injection. You can buy the 5-speed manual transmission or the high performing automatic transaxle. Catalyzer plus stainless steel exhaust system are also standard.

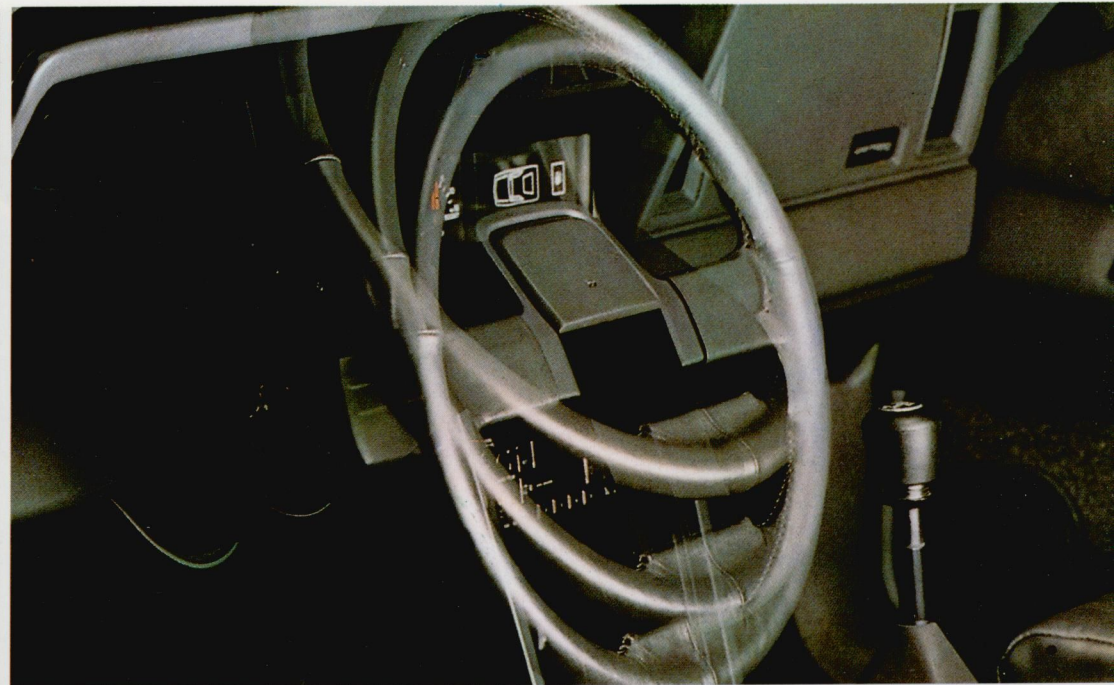
Like all Chrysler cars, it is produced on one of the automotive industry's most advanced assembly lines. The latest technology and controls are put to work for quality, dependability and durability.

The onboard computers are no high tech gimmicks, but designed to perform important tasks. Chrysler engines for instance, have a diagnostic memory that stores malfunction data which the mechanic can instantly retrieve through a special diagnostic read-out box. Result: a big savings on repair time – and on your pocketbook.

The Chrysler warranty protects your investment for 3 years or 110,000 kilometers. And the rust-through guarantee on the body is good for 7 years. An exceptional pledge of excellence, made possible by Chrysler quality.

We want your Chrysler LeBaron Turbo Convertible to be impressive in more than mere looks.







# New Exhilaration with Turbo Esprit.

The Chrysler GS Turbo 2 i is a dream car whose price tag makes it reality.

Its sporty personality was inspired by Carroll Shelby – one of the top race car drivers. In corporation with the Chrysler Shelby Engineering Team, he created a GS Turbo 2 i feeling that is truly awesome.

Its powerful 2.2-liter, 4-cylinder front-mounted engine, for instance, is one of the new turbo generation with inter-cooler. A Chrysler innovation for passenger cars that not only upgrades turbo technology and performance, but endows it with more long-lasting durability. The onboard computer controlling the electronic fuel injection system performs 300,000 calculations per second to regulate fuel-air mixture, ignition timing and emission. Dispensing exactly the right amount of fuel for every road situation, it brings new excitement to driving.

When cornering, the Chrysler front wheel drive really shows its stuff. A pleasure that is only further enhanced by the precise power-assisted rack-and-pinion steering. It will be difficult to find a more dependable steering system anywhere – after all, Chrysler invented power steering.

The Chrysler GS Turbo 2 i attains a top speed of 215 km/h with 177 hp DIN (130 kW).

Its luxurious standard equipment is a welcome contrast to the often spartan austerity of sporty cars. The Chrysler GS Turbo 2 i is equipped with 6-way power adjustable bucket seats with power adjustable lumbar, thigh, and lateral supports. An extraordinary convenience you'll especially appreciate on long hauls.

Plus dual power remote control mirrors outside, a tilt sports steering wheel, 2-speed intermittent windshield wipers, cast aluminum wheels, tinted glass, power steering and power 4-wheel disc brakes – all at no extra charge.

All-round visibility is ensured by rear window defroster and special side window demisters. Again, all standard. As is the built-in-6-speaker-system, designed to enchant music lovers. The Information Center in the cockpit monitors numerous functions with the aid of graphic displays.

Color coordinated carpets, upholstery and interior panels are a never-ending source of pleasure. The center console and footrest for the driver's left foot, at no extra charge, are also nice touches. As are the folding rear seats which double capacity of the cargo compartment. The handsome liftback gate expedites loading and unloading.

Like all Chryslers, the GS Turbo 2 i is naturally a clean machine – with both catalyzer and stainless steel exhaust system as standard equipment.

The Chrysler GS Turbo 2 i is built with extensively rust-resistant galvanized steel and glazed with Chrysler's Clear Coat paint finish. A fully insulated laser- and camera-controlled dust-free paint facility produces uniform long-lasting finishes. In addition, Clear Coat paint assures greater resistance to chipping and fading.

Everything from the paint finish to the powertrain, even the turbo, is designed and quality controlled using the latest technology. That's why Chrysler backs the entire car – inside and out – with a 3 year/110,000 km warranty.







# Passport to Freedom.

The Chrysler Voyager is a whole new kind of vehicle. A spacious stylish minivan. It has versatile seating for up to 7 passengers, yet fits neatly into any garage.

And you'll find it almost indispensable for every need all week long. Whether it's driving to work, or serving as a stylish, prestigious on-the-job helper. With cargo space of 208 x 125 cm behind the front seats, it transports everything you can imagine – and then some. With seating for five or seven it can haul a small team or a large family.

And on weekends it's your passport to freedom. Giving you full flexibility to do more, experience more. Leave the rear seat at home – it's a snap to remove with the quick release – and you have room for all your luggage and sports equipment. Or leave the rear seat in and you can drive your friends to a picnic, or your sailing crew to the seashore. Or with an optional Convert-a-Bed, you can pitch camp wherever you like.

You'll sprint right past those long columns of trailers. After all, its powerful 2.5-liter, 4-cylinder engine with electronic fuel injection easily reaches a top speed of 153 km/h. Or choose the 3-liter engine with 6 cylinders for a good 175 km/h.

The Chrysler Voyager gives you car-like handling and performance. Its front-wheel drive/front-mounted engine concept takes it elegantly through the curves. The precise power-assisted rack-and-pinion steering gives you effortless control and makes parking easier.

The Voyager LE with its 3-liter engine comes equipped with an excellent level standard equipment, catalyst, power

steering, power brakes, power windows, power door locks, dual remote control mirrors outside, 2-speed intermittent windshield wipers, rear window wipers, special demisters for side windows and rear window defroster.

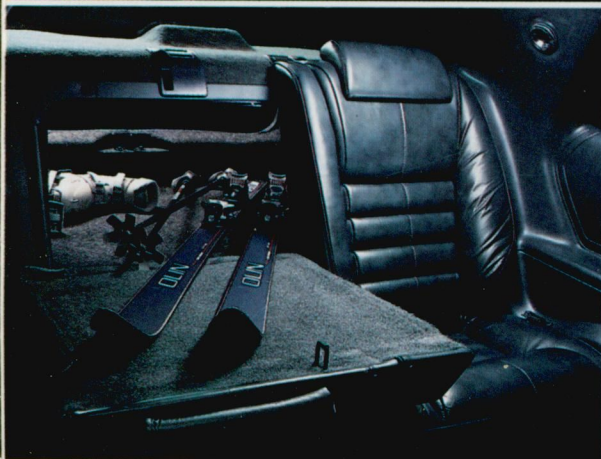
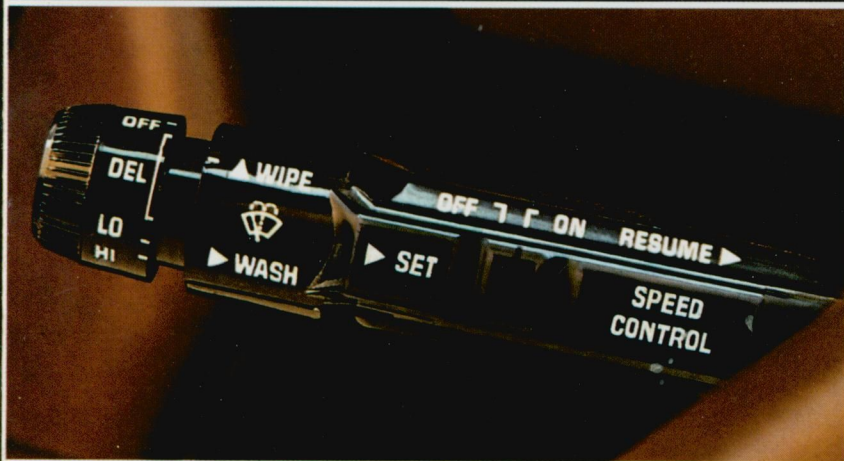
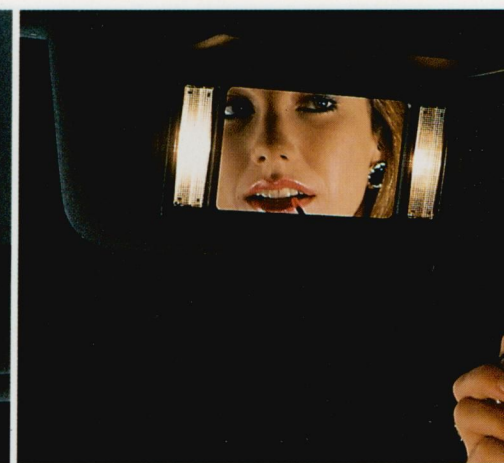
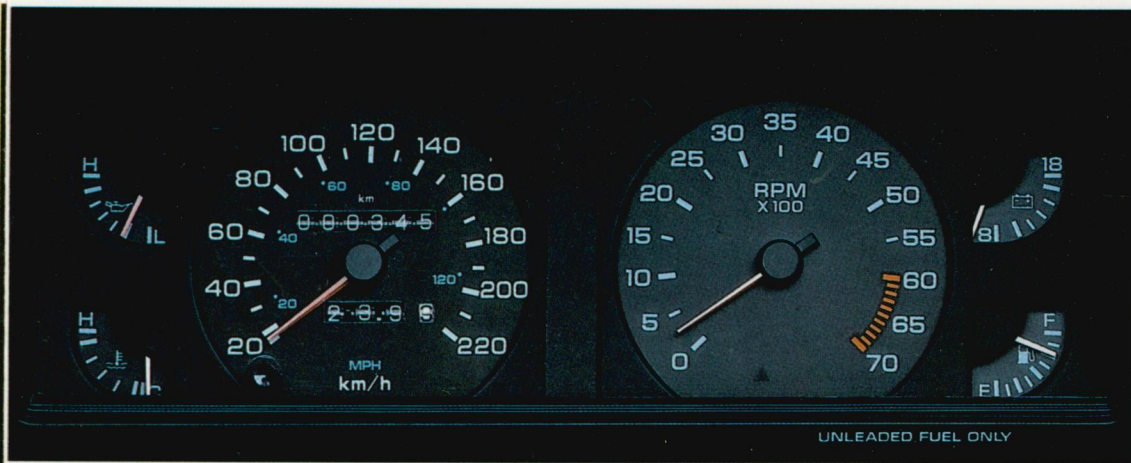
With tinted glass, built-in four-speaker system, premium seats with armrests, center console up front, a storage drawer beneath the front passenger seat, color coordinated carpets, upholstery and interior panels. The Voyager brings Chrysler luxury to the caravan class.

State-of-the-art technology is employed to build better, more dependable cars. Chrysler has one of the largest integrated computer networks in the automotive industry. Complex problems are identified and solved in the pre-production stages.

No wonder Chrysler can give you a pledge of such high quality. The Chrysler Voyager, is likewise backed by the 3 year/110,000 km warranty. Plus 7 year rust-through guarantee on the body – thanks to Chrysler's super-smooth, extra long lasting Clear Coat Finish.

All-round dependability and durability are especially important in an active-lifestyle vehicle like the Chrysler Voyager. A vehicle that's as versatile as it is fast and practical. Or, as you're so inclined, sociable and romantic.

Chrysler LE shown with optional decor-package.



Chrysler LeBaron	Coupé		Cabrio	
	2.2 l	2.5 l	2.2 l	2.5 l
Antenna	S	S	S	S
Air conditioning	O	O	O	O
Ashtrays - front/rear	S	S	S	S
Automatic (3-speed)	O	O	O	O
Bumpers energy absorbing, color keyed soft fascia with bumper guards front/rear	S	S	S	S
Cargo area compartment (illuminated) with carpeting	S	S	S	S
Carpeting - passenger compartment	S	S	S	S
Catalyst (3-way)	S	S	S	S
Center console with storage bin, ashreceiver illuminated, cassette holder, cigar lighter, coin/cupholder	S	S	S	S
Dashboard (upholstered) with speedometer, tachometer, electr. system voltage, engine coolant temperature, engine oil pressure, fuel level gauge, odometer, trip odometer	S	S	S	S
Defroster - rear	S	S	S	S
Dimmer for instrument panel	S	S	S	S
Door locks - power	S	S	S	S
Door map pockets - front	S	S	S	S
Driver's seat, power 6-way	S	S	S	S
Floor mats front/rear	S	S	S	S
Fog lamp - rear	S	S	S	S
Frontcenter armrest	S	S	S	S
Fuel filler door - remote release	S	S	S	S
Glass - tinted	S	S	S	S
Glove box lockable, illuminated	S	S	S	S
Hazard warning flasher	S	S	S	S
Headlights - halogen	4	4	4	4
Headliner - cloth covered	S	S	S	S
Heater/defroster - 3-speed-bi-level-ventilation	S	S	S	S
Hood - counterbalanced	S	S	S	S
Horn - dual notes	S	S	S	S
Ignition lamp with time delay	S	S	S	S
Indicator lamps includes charging system malfunction, door and trunk ajar, engine oil pressure, high beams on, ignition on, low fuel level, low washer liquid level, parking brake on, seat belts unfastened, turn signals, warning lights for brakes	S	S	S	S
Liftgate - remote release	S	S	S	S
Light - dome	S	S	S	S
Light - underhood	S	S	S	S

	Coupé		Cabrio	
	2.2 l	2.5 l	2.2 l	2.5 l
Manual transmission	S	S	S	S
Map reading lights	S	S	S	S
Mirrors - exterior, dual (power adjustable)	S	S	S	S
Mirrors - interior, illuminated left and right visor vanity mirrors	S	S	S	S
Mirror - interior rear view day/night	S	S	S	S
Moldings - bodyside	S	S	S	S
Multifunction steering column central level for day/night flash, flash pass, turn signals with lane change feature, windshield washer, windshield wiper with intermittent wipe	S	S	S	S
Overhead console with compass, dual map reading lights, storage bin for sun glasses, temperature display	S	S	-	-
Rear reflector	S	S	S	S
Seat belts (3-point)	S	S	S	S
Seats - front (reclining) with adjustable head restraints	S	S	S	S
Rear bench seat with 40/60 fold down seat back for loading	S	S	-	-
Spare tire (space saver)	S	S	S	S
Speakers	4	4	4	4
Speed control	S	S	S	S
Stainless steel exhaust	S	S	S	S
Steel body, extensively galvanized; lower body protective urethane coating	S	S	S	S
Steering column - energy absorbing	S	S	S	S
Steering column tilt	S	S	S	S
Steering wheel-sport, leather wrapped	S	S	S	S
Top (power) with glas (rear window)	-	-	S	S
Trip computer with average consumption, range distance to empty	S	S	S	S
Upholstery cloth leather	S	S	-	-
Wheels - 15" cast aluminum	S	S	S	S
Windows - power	S	S	S	S
Windshield (laminated)	S	S	S	S
Windshieldwasher (electr.)	S	S	S	S
Windshieldwipers, 2-speeds intermittent wipe	S	S	S	S

Chrysler GS Turbo 2 i	2.2 l
Antenna	S
Air conditioning	P
Ashtrays - front/rear	S
Bumpers energy absorbing, color keyed soft fascia with bumper guards front/rear	S
Cargo area compartment (illuminated) with carpeting	S
Carpeting - passenger compartment	S
Catalyst (3-way)	S
Center console with storage bin, ashreceiver illuminated, cassette holder, cigar lighter, cup/coin holder	S
Dashboard (upholstered) with speedometer, tachometer, electr. system voltage, engine coolant temperature, engine oil pressure, fuel level gauge, odometer, trip odometer	S
Defroster - rear	S
Dimmer for instrument panel	S
Door locks - power	S
Driver's seat, 6-way power with lumbar, thigh and lateral supports	S
Floor mats front/rear	P
Frontcenter armrest	S
Fuel filter door - remote release	S
Glass - tinted	S
Glove box lockable, illuminated	S
Hazard warning flasher	S
Headlights - halogen concealed	S
Headliner - cloth covered	S
Heater/defroster - 3-speed-bi-level-ventilation	S
Hood - counterbalanced	S
Horn - dual notes	S
Ignition lamp with time delay	S
Indicator lamps includes charging system malfunction, door and trunk ajar, engine oil pressure, high beams on, ignition on, low fuel level, low washer liquid level, parking brake on, seat belts unfastened, turn signals, warning lights for brakes	S
Liftgate - remote release	S
Light - dome	S
Light - underhood	S
Manual transmission	S
Map reading lights	S
Mirrors - exterior, dual (power adjustable)	S

	2.2 l
Mirrors - interior, left and right visor vanity mirrors	S
Mirror - interior rear view day/night	S
Moldings - bodyside	S
Multifunction steering column central level for day/night flash, flash pass, turn signals with lane change feature, windshield washer, windshield wiper with intermittent wipe	S
Rear reflector	S
Seat belts (3-point)	S
Seats - front (reclining) with adjustable head restraints	S
Seats - rear, individual fold down rear seat back for loading	S
Spare tire (space saver)	S
Speakers	6
Speed control	P
Spoiler - front	S
Spoiler - rear	S
Stainless steel exhaust	S
Steel body, extensively galvanized; lower body protective urethane coating	S
Steering column - energy absorbing	S
Steering column tilt	S
Steering wheel-sport	S
Turbo boost gauge	S
Upholstery cloth	S
Wheels - 15" cast aluminum	S
Windows - power	P
Windshield (laminated)	S
Windshieldwasher (electr.)	S
Windshieldwipers, 2 speeds intermittent wipe	S
Windshieldwiper - liftgate	P

Chrysler Voyager SE	2.5 I
Antenna	S
Air conditioning	O
Ashtrays - front/rear	S
Bumpers - chrome with protective rub strip	S
Carpeting - passenger compartment	S
Catalyst (3-way)	S
Dashboard (upholstered) with speedometer, electr. system voltage, fuel level gauge, odometer, trip odometer	S
Defroster - rear	S
Dimmer for instrument panel	S
Door locks - power	S
Fog lamp - rear	S
Front seats with armrests	S
Fuel filler door - remote release	S
Glass - tinted	S
Hazard warning flasher	S
Headlights - hologen	S
Headliner - cloth covered	S
Heater/defroster - 3-speed-bi-level-ventilation	S
Horn dual notes	S
Indicator lamps includes charging system malfunction, door and liftgate ajar, engine oil pressure, high beams on, ignition on, low fuel level, low washer liquid level, parking brake on, seat belts unfastened, turn signals, warning lights for brakes	S
Liftgate - power, remote release	S
Light - dome	S
Manual transmission	S
Mirrors - exterior, dual (power adjustable)	S
Mirror - interior rear view day/night	S
Multifunction steering column central level for day/night flash, flash pass, turn signals with lane change feature, windshield washer, windshield wiper with intermittent wipe	S
Rear reflector	S
Seat belts (3-point)	S
Seats - front (reclining) with integrated head restraints	S
Seats - rear bench seat with quick release for remove	1
Seats - additional rear bench seat	O
Side door sliding	S
Spare tire (space saver)	S
Speakers	4

	2.5 I
Speed control	P
Stainless steel exhaust	S
Steel body, extensively galvanized; lower body protective urethane coating	S
Steering column - energy absorbing	S
Steering column tilt	P
Storage bins - rear	S
Storage drawer - under front passenger seat, lockable	S
Mirrors - interior, left and right visor vanity mirrors	S
Upholstery cloth	S
Wheels - steel	S
Windows / side (rear) vented	4
Windshield (laminated)	S
Windshieldwasher (electr.)	S
Windshieldwipers, 2-speeds intermittent wipe	S
Wiper/washer - liftgate	S

Chrysler Voyager LE	3.0 I
Antenna	S
Air conditioning	O
Ashtrays - front/rear	S
Automatic (3-speed)	S
Bumpers - front and rear, bright with protective rubstrips and color keyed end caps	S
Carpeting - passenger compartment	S
Catalyst (3-way)	S
Center console with storage bin (lockable), ashreceiver illuminated, cassette holder, cup/coin holder, map reading lamp, cigar lighter	S
Dashboard (upholstered) with speedometer, tachometer, electr. system voltage, engine coolant temperature, engine oil pressure, fuel level gauge, odometer, trip odometer	S
Defroster - rear	S
Dimmer for instrument panel	S
Door locks - power	S
Driver's seat, 6-way power	S
Floor mats front/rear	S
Fog lamp - rear	S
Front seats with armrests	S
Fuel filler door - remote release	S
Glass - tinted	S
Hazard warning flasher	S
Headlights - halogen	S
Headliner - cloth covered	S
Heater/defroster - 3-speed-bi-level-ventilation	S
Horn dual notes	S
Ignition lamp with time delay	S
Indicator lamps includes charging system malfunction, door and liftgate ajar, engine oil pressure, high beams on, ignition on, low fuel level, low washer liquid level, parking brake on, seat belts unfastened, turn signals, warning lights for brakes	S
Liftgate - power, remote release	S
Light - dome	S
Light - underhood	S
Luggage rack - roof mounted	S
Map reading lights	S
Mirrors - exterior, dual (power adjustable)	S
Mirrors - interior, illuminated left and right visor vanity mirrors	S

	3.0 I
Mirror - interior rear view day/night	S
Multifunction steering column central level for day/night flash, flash pass, turn signals with lane change feature, windshield washer, windshield wiper with intermittent wipe	S
Overhead console with compass, dual map reading lights, storage bin for sun glasses, temperature display	S
Rear reflector	S
Seat belts (3-point)	S
Seats - front (reclining) with integrated head restraints	S
Seats - rear benches seat	2
Shift lever column mounted	S
Side door sliding	S
Spare tire (space saver)	S
Speakers	4
Speed control	S
Stainless steel exhaust	S
Steel body, extensively galvanized; lower body protective urethane coating	S
Steering column - energy absorbing	S
Steering column tilt	S
Storage drawer - under front passenger seat, lockable	S
Storage bins - rear	S
Upholstery cloth	S
Wheels - 15" cast aluminum	S
Windows - power	S
Windows (side) - vented	4
Windshield (laminated)	S
Windshieldwasher (electr.)	S
Windshieldwipers, 2-speeds intermittent wipe	S
Wiper/Washer - liftgate	S

# Chrysler Equipment.

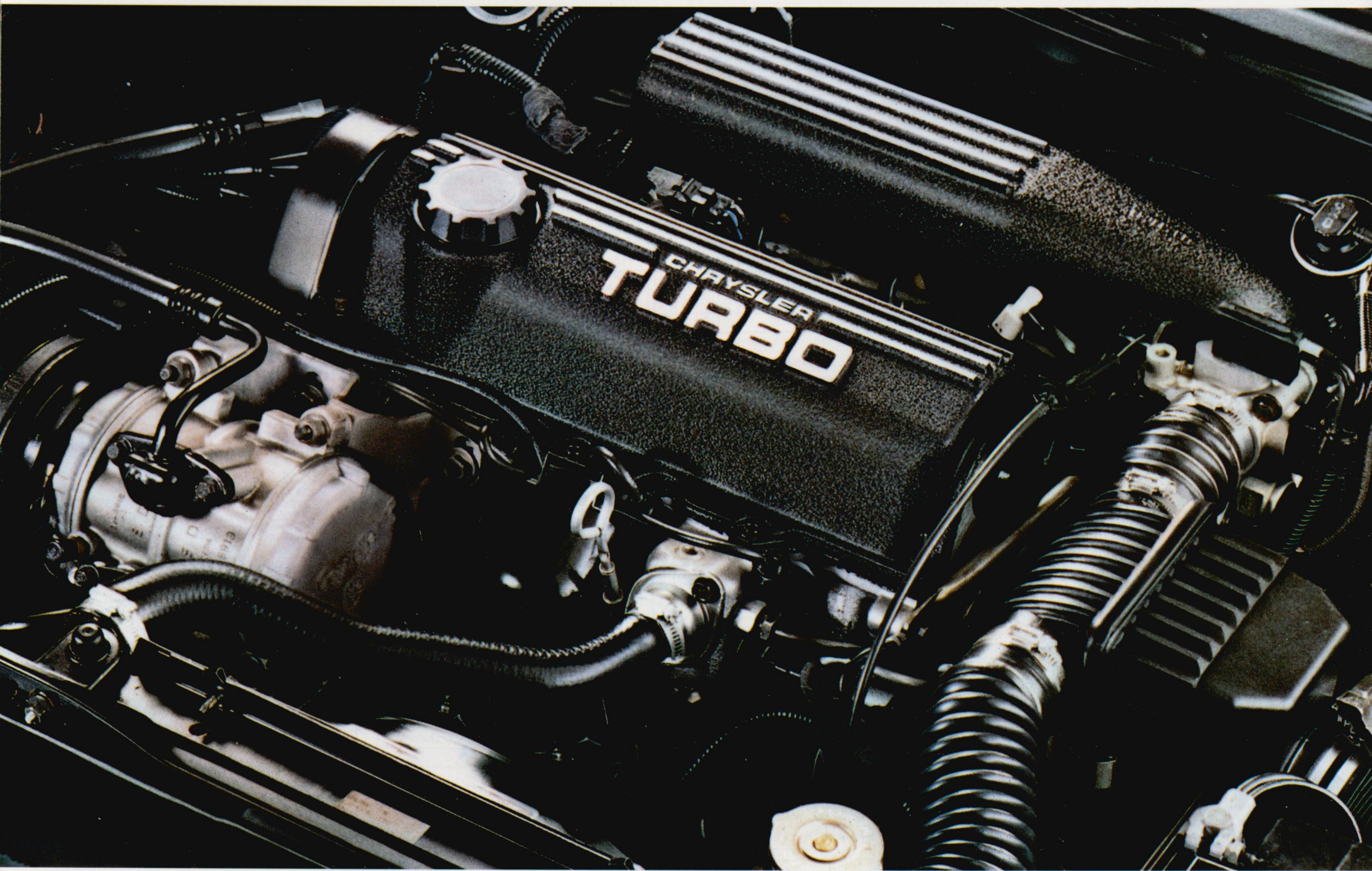
Chrysler ES	2.2 I	2.5 I
Antenna	S	S
Air conditioning	O	O
Ashtrays - front/rear	S	S
Automatic (3-speed)	O	O
Bumpers - energy absorbing, color keyed soft fascia	S	S
Cargo area compartment (illuminated) with carpeting	S	S
Carpeting - passenger compartment	S	S
Catalyst (3-way)	S	S
Center console with storage bin, ashreceiver illuminated, cigar lighter	S	S
Dashboard (upholstered) with speedometer, tachometer, electr. system voltage, engine coolant temperature, fuel level gauge, odometer, trip odometer	S	S
Defroster - rear	S	S
Dimmer for instrument panel	S	S
Door locks - power	S	S
Door map pockets - front	S	S
Floor mats front/rear	P	P
Fog lamps - front	S	S
Fog lamps - rear	S	S
Frontcenter armrest	S	S
Glass - tinted	S	S
Glove box lockable, illuminated	S	S
Hazard warning flasher	S	S
Headlights - halogen	S	S
Headliner - cloth covered	S	S
Heater/defroster - 3-speed-bi-level-ventilation	S	S
Hood - counterbalanced	S	S
Ignition lamp with time delay	S	S
Indicator lamps includes charging system malfunction, door and trunk ajar, engine oil pressure, high beams on, ignition on, low fuel level, low washer liquid level, parking brake on, seat belts unfastened, turn signals, warning lights for brakes	S	S
Liftgate - remote release	S	S
Light - dome	S	S

Light - underhood	S	S
Manual transmission	S	S
Map reading lights	S	S
Mirrors - exterior, dual (power adjustable)	S	S
Mirrors - interior, left and right visor vanity mirrors	S	S
Mirror - interior rear view day/night	S	S
Multifunction steering column central lever for day/night flash, flash pass, turn signals with lane change feature, windshield washer, windshield wiper with intermittent wipe	S	S
Rear bench seat with 40/60 fold down seat back for loading	S	S
Rear reflector	S	S
Seat belts (3-point)	S	S
Seats - front (reclining) with adjustable head restraints	S	S
Spare tire (space saver)	S	S
Speakers	4	4
Speed control	P	P
Spoiler - rear	S	S
Stainless steel exhaust, dual pipes	S	S
Steel body, extensively galvanized; lower body protective urethane coating	S	S
Steering column - energy absorbing	S	S
Steering column tilt	P	P
Steering wheel-sport, leather wrapped	S	S
Turbo boost gauge	S	-
Upholstery cloth covered	S	S
Wheels - 15" cast aluminum	S	S
Windows - power	P	P
Windshield (laminated)	S	S
Windshieldwasher (electr.)	S	S
Windshieldwipers, 2-speeds intermittent wipe	S	S

Chrysler GTS	2.2 I	2.5 I
Antenna	S	S
Air conditioning	O	O
Ashtrays - front/rear	S	S
Automatic (3-speed)	O	O
Bumpers - energy absorbing, color keyed soft fascia	S	S
Cargo area compartment (illuminated) with carpeting	S	S
Carpeting - passenger compartment	S	S
Catalyst (3-way)	S	S
Center console with storage bin, ashreceiver illuminated, cigar lighter	S	S
Dashboard (upholstered) with speedometer, tachometer, electr. system voltage, engine coolant temperature, engine oil pressure, fuel level gauge, odometer, trip odometer	S	S
Defroster - rear	S	S
Dimmer for instrument panel	S	S
Door locks - power	S	S
Door locks - rear: child proof	S	S
Door map pockets - front	S	S
Driver's seat, 6-way-power	P	P
Floor mats front/rear	S	S
Fog lamp - rear	S	S
Frontcenter armrest	S	S
Fuel filler door - remote release	S	S
Glass - tinted	S	S
Glove box lockable, illuminated	S	S
Hazard warning flasher	S	S
Headlights - halogen	4	4
Headliner - cloth covered	S	S
Heater/defroster - 3-speed-bi-level-ventilation	S	S
Hood - counterbalanced	S	S
Horn dual notes	S	S
Ignition lamp with time delay	S	S
Indicator lamps includes charging system malfunction, door and trunk ajar, engine oil pressure, high beams on, ignition on, low fuel level, low washer liquid level, parking brake on, seat belts unfastened, turn signals, warning lights for brakes	S	S

Liftgate - remote release	S	S
Light - dome	S	S
Light - underhood	S	S
Manual transmission	S	S
Map reading lights	S	S
Mirrors - exterior, dual (power adjustable)	S	S
Mirrors - interior, illuminated left and right visor vanity mirrors	S	S
Mirror - interior rear view day/night	S	S
Moldings - bodyside	S	S
Multifunction steering column central lever for day/night flash, flash pass, turn signals with lane change feature, windshield washer, windshield wiper with intermittent wipe	S	S
Overhead console with compass, dual map reading lights, temperature display	P	P
Rear bench seat with 40/60 fold down seat back for loading	S	S
Rear reflector	S	S
3 Roof handles	S	S
Seat belts (3-point)	S	S
Seats - front (reclining) with adjustable head restraints	S	S
Spare tire (space saver)	S	S
Speakers	4	4
Speed control	P	P
Stainless steel exhaust	S	S
Steel body, extensively galvanized; lower body protective urethane coating	S	S
Steering column - energy absorbing	S	S
Steering column tilt	P	P
Steering wheel-sport, leather wrapped	S	S
Upholstery cloth leather	S	O
Wheels - 15" cast aluminum	S	S
Windows - power	S	S
Windshield (laminated)	S	S
Windshieldwasher (electr.)	S	S
Windshieldwipers, 2 speeds intermittent wipe	S	S
Windshieldwasher/wiper - liftgate	S	S

S = Standard O = Option P = Package



# Chrysler Technology.

Chrysler has always been a synonym for engineering excellence. But never before has Chrysler invested so much in so short a time – in new know-how, state-of-the-art technologies for Design, Development and Production to build quality cars you can truly rely on. On every kind of road, in every kind of weather. Year in, year out. Chrysler today has one of the most advanced Design and Production facilities. It has one of the largest integrated technical computer networks in the automotive industry, the super computer that can process 400 million mathematical operations per second. Linked with it are approx. 1,000 terminals. Computer working for more precision – and more quality.

## **Computer-Controlled Design.**

The Chrysler CAD system in the automotive industry permits total information exchange between Design, Development and Production. This is the best way to master the complex problems inherent in designing a car before it enters production. Computer-assisted design is likewise employed to calculate and minimize wear-and-tear. Chrysler's advanced design technique enables engineers to instantly check the performance of a new or improved part developed on one terminal in interaction with all other parts. This saves enormous development time and infinitely increases Chrysler's design potential.

## **Computer-Controlled Assembly Line.**

Chrysler cars are designed and assembled with computer efficiency. Of course a computer is only as good as the people who program it – but then it works with far greater electronic precision. In operation at the Chrysler Sterling Heights Plant in Michigan is one of the world's most advanced assembly lines. Here more than 200 robots weld precision bodies. More than 200 laser- and monitor-cameras check 350 key body inspection points. Including important parts that cannot be seen by the human eye.

## **Computer-Controlled, Laser-Monitored Quality Tests.**

Chrysler cars are tested, retested and tested again. For functionality, dependability, durability. In special Engine Test Labs, 42 integrated computers process 8 million test instructions per second. We want to know exactly what's going on in each cylinder, how to build up oil pressure faster even in cold weather.

Special tests simulate stop-and-go city traffic to achieve better cooling and thus longer engine life. Four-hundred sensors measure various engine pressures, flows, currents and speeds, processing 9,600 bits of information per second. Chrysler engineers have developed a unique onboard data memory system that rides along on the test track, precisely recording test data. All electronic accessories are checked not only for performance, but for heat and humidity resistance. Video microscopes inspect what the human eye cannot – such as the onboard computer. Special simulators test chassis, body, transmission, brakes, putting them through their paces at all speeds. The cleanest emissions are researched in the 50,000 mile test, simulating every type of road condition. Laser inspect materials, weldseams and paint better than any human being can.

## **Chrysler Clear Coat Finish.**

Chrysler not only features extensively rust-resistant galvanized steel but one of the most advanced paint technologies in the industry. It puts a negative electrical charge in the car body and a positive charge in the paint molecules for supersmooth long lasting paint jobs. The Clear Coat finish is then run through the most stringent quality controls by laser- and monitor-cameras. On this corrosion protection and paint Chrysler can well afford to grant a 7 year rust-through guarantee.

## **Chrysler Onboard Computer.**

As part of its standard equipment, Chrysler employs high

tech onboard computers not as gimmicks, but only where they serve meaningful functions. Chrysler onboard computers operate with microsecond speed and electronic precision. The computer that controls the electronic fuel injection of Chrysler Turbo engines, for instance, performs 300,000 calculations per second to regulate the gas-air mixture, determine exact ignition timing and achieve the cleanest emission ratings. Additionally, Chrysler engines have a built-in diagnostic memory that identifies and stores all malfunctions – even those which a trained mechanic cannot immediately spot. With the aid of a special diagnostic read-out box connected to the engine, the mechanic can instantly find the source of the problem, saving costly repair time and sparing your pocketbook.

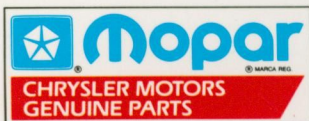
Chrysler's sophisticated technologies and its commitment to excellence can be seen in the millions of cars and trucks on the roads of the world today. And it's a commitment that will continue long into the future.

# Technical Data.

Model	Body		Engine														Gear Box		Suspension and Tires								
Chrysler	Doors	Seats	Drive Layout (Engine Transverse)	Cylinders	Displacement cm <sup>3</sup>	Power kW	Horsepower DIN/RPM	Torque NM/RPM	Bore and Stroke mm	Compression Ratio	Fuel System	Boost	Catalyst	Engine Oil (Minus Filter) l	Capacity Coolingsystem l	Forward Speeds Man. Transmission	Automatic 3 Speeds	Suspension Front	Suspension Rear	Tires/Unidirectional (Standard)	Power-Steering	Brakes (Di = Disc/Dr = Drum)		Power Brakes			
																						Front	Rear				
	ES Turbo i	2,3	5	Front Wheel Drive	4	2.213	109	148/5.200	228/2.400	87,5× 92	8,1:1	Electronic Injection	×	Standard	3,8	8,5	5	×	Gas-Charged Front Iso-Struts (McPherson), Antisway Bars	Gas-Charged Shocks, Antisway Bars	P205/50 VR15	×	Di	Dr	×		
	ES i	2,3	5		4	2.501	74	99/4.400	180/2.800	87,5× 104	9,0:1				3,8	8,5	5	×			P205/50 VR15	×	Di	Dr	×		
	GTS Turbo i	4,5	5		4	2.213	109	148/5.200	228/2.400	87,5× 92	8,1:1		×		3,8	8,5	5	×			P205/60R 15	×	Di	Dr	×		
	GTS i	4,5	5		4	2.501	74	99/4.400	180/2.800	87,5× 104	9,0:1				3,8	8,5	5	×			P205/60R 15	×	Di	Dr	×		
	LeBaron																										
	Coupé 2,2 Turbo i	2,3	2+2		4	2.213	109	148/5.200	228/2.400	87,5× 92	8,1:1		×		3,8	8,5	5	×			P205/60R 15	×	Di	Dr	×		
	2,5	2,3	2+2		4	2.501	74	99/4.400	180/2.800	87,5× 104	9,0:1				3,8	8,5	5	×			P205/60R 15	×	Di	Dr	×		
	Cabrio 2,2 Turbo i	2	2+2		4	2.213	109	148/5.200	228/2.400	87,5× 92	8,1:1		×		3,8	8,5	5	×			P205/60R 15	×	Di	Dr	×		
	2,5	2	2+2		4	2.501	74	99/4.400	180/2.800	87,5× 104	9,0:1				3,8	8,5	5	×			P205/60R 15	×	Di	Dr	×		
	GS Turbo 2 i	3	2+2		4	2.213	130	177/5.200	276/3.200	87,5× 92	8,0:1		×		3,8	8,5	5	-			P225/50 VR15	×	Di	Di	×		
Voyager SE	3+1	5,7	4		2.501	71	97/4.400	179/2.800	87,5× 104	9,0:1			3,8		8,1	5	-	P195/75R 14			×	Di	Dr	×			
Voyager LE	3+1	5,7	6		2.972	103	140/4.800	224/2.400	91,1× 76	8,85:1			3,8		9,5	-	×	P205/70R 14			×	Di	Dr	×			

Model	Electrics			Dimensions and Weights						Others				
Chrysler	Battery Maintenance Free Amp.	Alternator Amp.	Ignition System	Wheelbase mm	Track Front mm	Track Rear mm	Size Length x Width x Height mm Overall	Curb Weight kg	GWW kg	Maximum Speed km/h	Fuel Capacity l	Fuel Unleaded R + M = Oct. Min. Octane	Turning Diameter m	Max. Trailer Weight kg
ES Turbo i	400	120	Electronic	2.463	1.463	1.453	4.362 x 1.710 x 1.339	1.175	1.640	184	53	91,0	10,3	-
ES i	400	120		2.463	1.463	1.453	4.362 x 1.710 x 1.339	1.175	1.640	163	53	87,0	10,3	900
GTS Turbo i	500	90		2.618	1.464	1.453	4.581 x 1.736 x 1.345	1.210	1.740	190	53	91,0	13,1	-
GTS i	500	90		2.618	1.464	1.453	4.581 x 1.736 x 1.345	1.210	1.740	164	53	87,0	13,1	900
LeBaron														
Coupé 2,2 Turbo i	500	90		2.546	1.462	1.464	4.697 x 1.738 x 1.294	1.295	1.740	190	53	91,0	12,8	-
2,5	500	90		2.546	1.462	1.464	4.697 x 1.738 x 1.294	1.295	1.740	172	53	87,0	12,8	900
Cabrio 2,2 Turbo i	500	90		2.546	1.462	1.464	4.697 x 1.738 x 1.326	1.320	1.675	187	53	91,0	12,8	-
2,5	500	90		2.546	1.462	1.464	4.697 x 1.738 x 1.326	1.320	1.675	164	53	87,0	12,8	900
GS Turbo 2 i	500	90		2.465	1.461	1.464	4.555 x 1.774 x 1.273	1.194	1.700	215	53	91,0	12,4	-
Voyager SE	500	90		2.848	1.521	1.578	4.467 x 1.764 x 1.684	1.455	2.140	153	76	87,0	12,5	900
Voyager LE	500	90		2.848	1.521	1.578	4.467 x 1.764 x 1.684	1.555	2.175	175	76	87,0	12,5	1.200

Model	Interior Dimensions									
Chrysler	Hip Room Front mm	Hip Room Rear mm	Shoulder Room Front mm	Shoulder Room Rear mm	Head Room Front mm	Head Room Rear mm	Leg Room Front mm	Leg Room Rear mm	Cargo Volume Rear Seat Up In l	Cargo Area, Length x Width x Height mm Cargo Length to Seat Back Upper End Cargo Width max. between Wheel Housing with Wagon Trim Cargo Height Interior
ES	1.404	1.206	1.382	1.334	973	949	1.055	864	374	-
GTS	1.310	1.318	1.418	1.420	972	963	1.044	927	518	-
LeBaron Coupé	1.360	1.224	1.420	1.430	955	926	1.077	839	413	-
LeBaron Cabrio	1.360	954	1.420	1.160	972	940	1.077	839	297	-
GS Turbo 2 i	1.382	1.216	1.420	1.362	942	872	1.077	763	428	-
Voyager (SE/LE) 5 Pers. 7 Pers.	1.344 1.344	1.621 1.666	1.484 1.484	1.557 1.539	990 990	970 973	971 971	959 955	- -	2.080x1.225x1.219

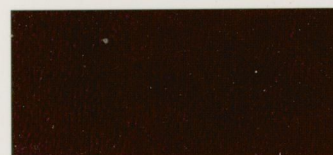


MOPAR parts are engineered by Chrysler and used by professional mechanics worldwide. When replacement is necessary, be sure to specify MOPAR parts.

Ask your Chrysler dealer about exterior colors and interior trims. He has the accurate color chips and upholstery samples. Due to occasional printing irregularities the colors shown may vary from actual hues.



Blue (Leather)



Bordeaux (Leather)



Charcoal (Leather)



Black Clear PX 8



Blue Daytona Clear PB 4



Blue Ice Chrystal PB 1



Blue Twilight Pearl PC 7



Cherry Black Pearl PM 9



Charcoal Pearl PS 8



Dark Pewter Pearl PL 8



Light Pewter Pearl PL 2



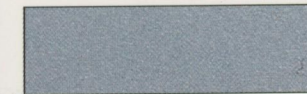
Claret Red Pearl PM 4



Flash Red Clear PR 3



Graphic Red Chrystal PR 5



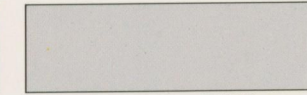
Radiant Silver Clear PA 1



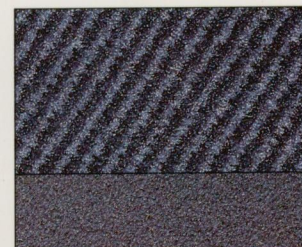
Dark Suede Clear PK 9



Medium Suede Clear PK 4



White Bright Clear PW 7



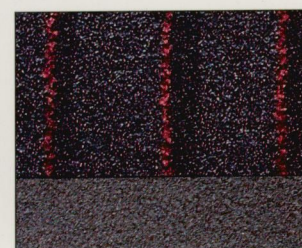
Blue (Vinyl)



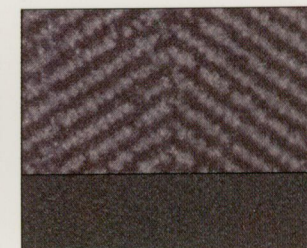
Twilight Blue (Vinyl)



Bordeaux (Vinyl)



Charcoal (Vinyl)



Silver (Vinyl)



Taupe (Vinyl)

All product illustrations and specifications are based upon current information at the time of publication approval. Although descriptions are believed correct, accuracy cannot be guaranteed. Chrysler Motors reserves the right to make changes from time to time, without notice or obligation, in prices, specifications, colors and materials, and to change or discontinue models. See your dealer for the latest information.

