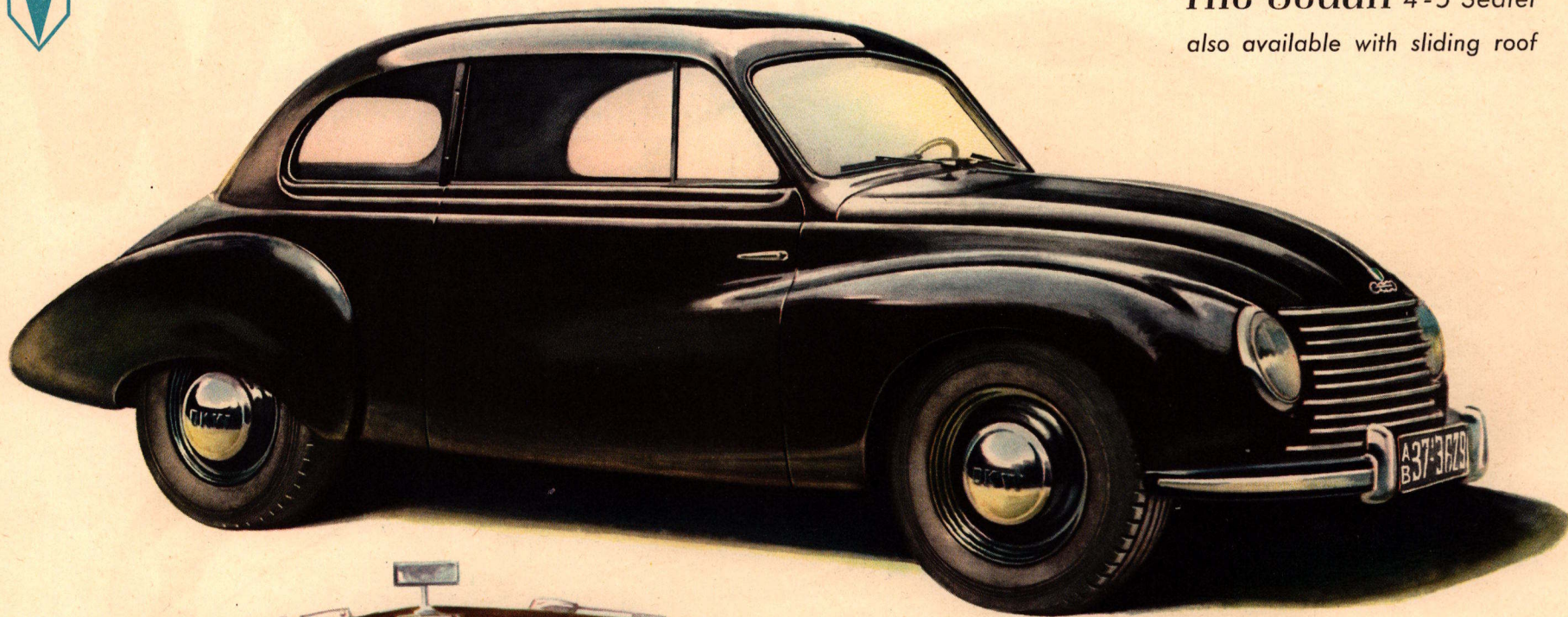


*The new*  
**DKW**

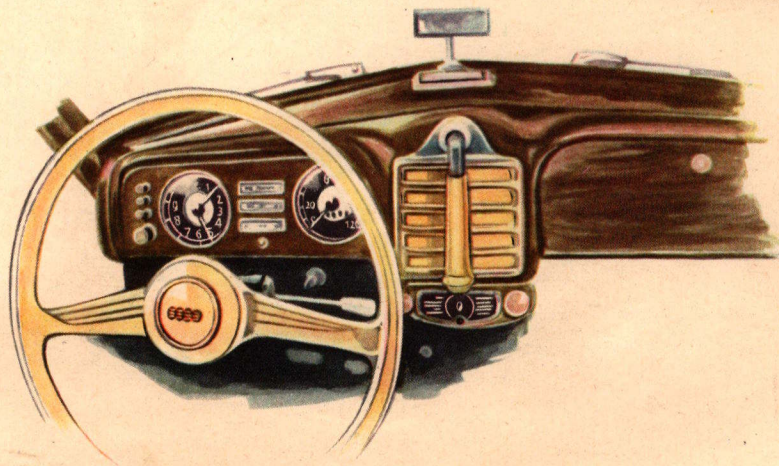






## *The Sedan 4-5 Seater*

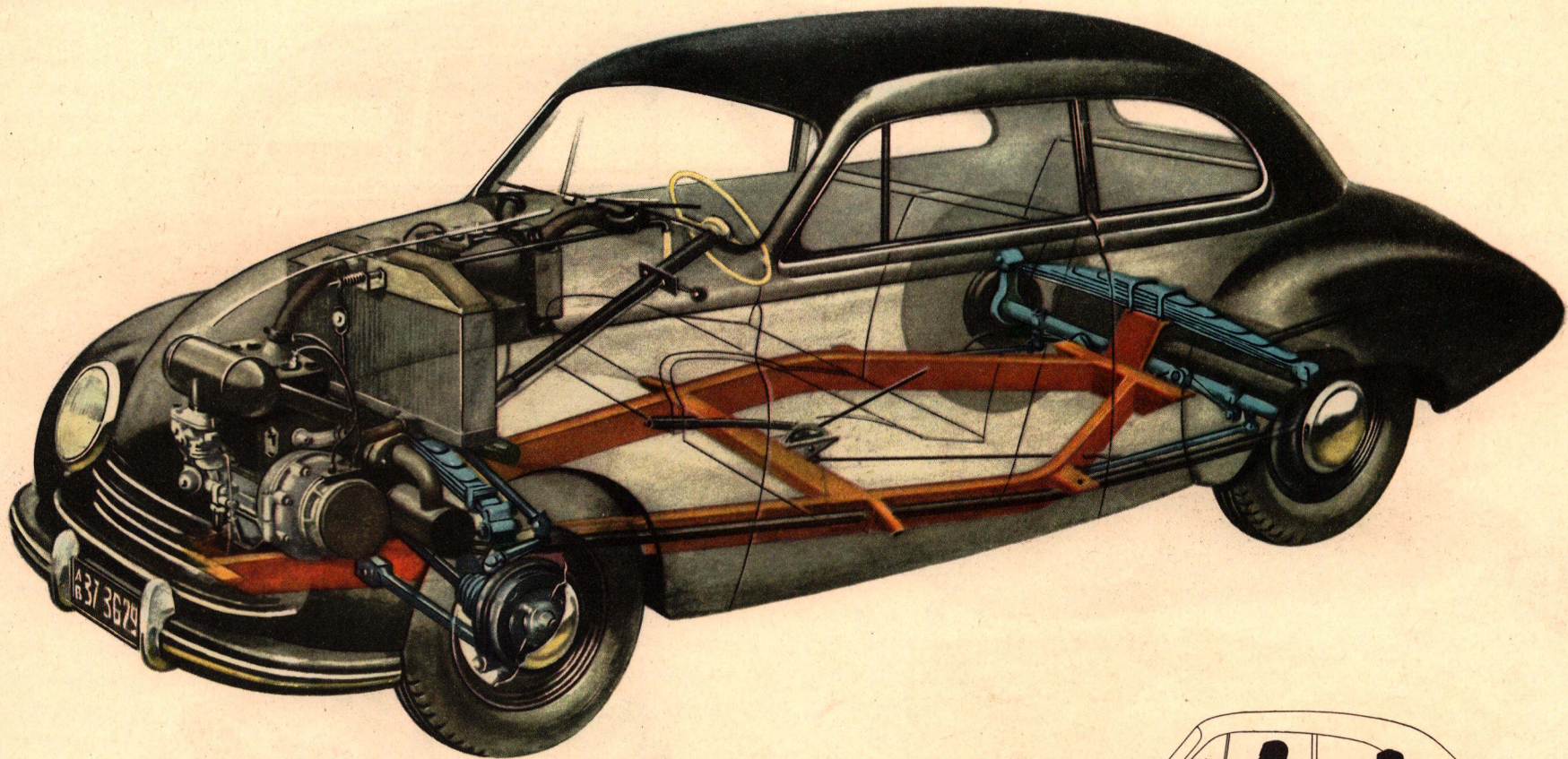
*also available with sliding roof*



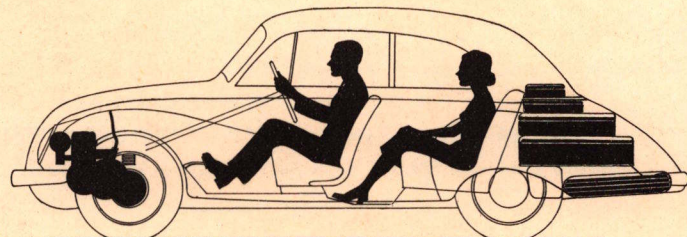
*Instruments clearly visible through the unobstructed upper section of the attractive two-spoke steering wheel. Dashboard designed to take a radio set, which can be supplied as an optional extra.*



## The Chassis



Both engine and gear-box are placed ahead of the front axle and the luggage compartment behind the rear axle leaving the entire space between the axles free to provide comfortable seating for the passengers.





# *The secret to start a friendship . . .*

Already at first glance you'll like the new DKW "MASTER" for its modern sweeping lines which will draw looks of admiration from your friends. Once a world-popular "small" car, the DKW "MASTER"—now designed on big car lines and built both as a four-seater sedan and cabriolet—has developed to a very spacious version with attractive, streamlined all-steel body. Here is the car to satisfy your highest requirements and to withstand the toughest operating conditions.

In the new AUTO UNION DKW "MASTER", engine and gearbox are placed ahead of the front axle, thus providing more space for passengers and luggage. The slightly reduced wheelbase improves the turning circle, and the increased weight on the front wheels ensures greater traction on rough or slippery roads. Due to the front-wheel drive there is no transmission shaft tunnel to take up space or to reduce comfort. The revolutionary valveless 700 c. c. twin cylinder two-stroke engine, pioneered by DKW, has been retained, but the power output has been increased to 23 B.H.P. This extra power gives higher performance and even greater comfort. To you as the new owner this engine will be a revelation and continue to excite your admiration and satisfaction with every journey made.

Also in other respects the design of this car has been substantially changed. Some of the outstanding features you will find in the new AUTO UNION DKW "MASTER" are:

**Spacious accommodation for 4—5 persons** and large luggage compartment, accessible from outside.

**Excellent cold-starting and quick get-away:** starting is practically instantaneous at all times, whether the engine be hot or cold, owing to the reliable petrol lubrication system. With each revolution of the crankshaft, its ingenious lubrication system feeds fresh oil at low temperature to the engine. Since oil is mixed with petrol, a continuous oil-film covers the moving parts of the power unit, making the AUTO UNION DKW absolutely reliable and foolproof.

**Outstanding road holding qualities,** even under the worst road and weather conditions, will take you over winding or wet roads without the slightest danger of skidding—thanks to the front-wheel drive, which makes cornering quicker and easier.

**High cruising speeds** of up to 60 miles (100 km) p. h. can be safely maintained over long distances—due to the sturdy DKW two-stroke engine.

**Low petrol consumption:** under most economical operating conditions: 43 miles p. g. (6.25 litres/100 km).

**Comfortable riding in every seat**—through independent front-wheel suspension, floating rear axle suspension and well-dimensioned shock absorbers. All seats, well sprung and comfortably upholstered, are carried within the wheelbase. Road and engine noise are practically eliminated to provide riding as silently as you could wish over effortless miles.

**Absolute driving safety** due to the powerful 4-wheel "Duplex" hydraulic brake system (the latest Ate Lockheed construction) with additional efficient mechanical rear wheel hand-brake. They are so progressive and positive in action that, together with the front-wheel drive, the driver has at all times complete control of the car.

**Easy gear-changing and an automatic free-wheel device** for economy in petrol consumption and smooth running when driving downhill or in dense traffic.

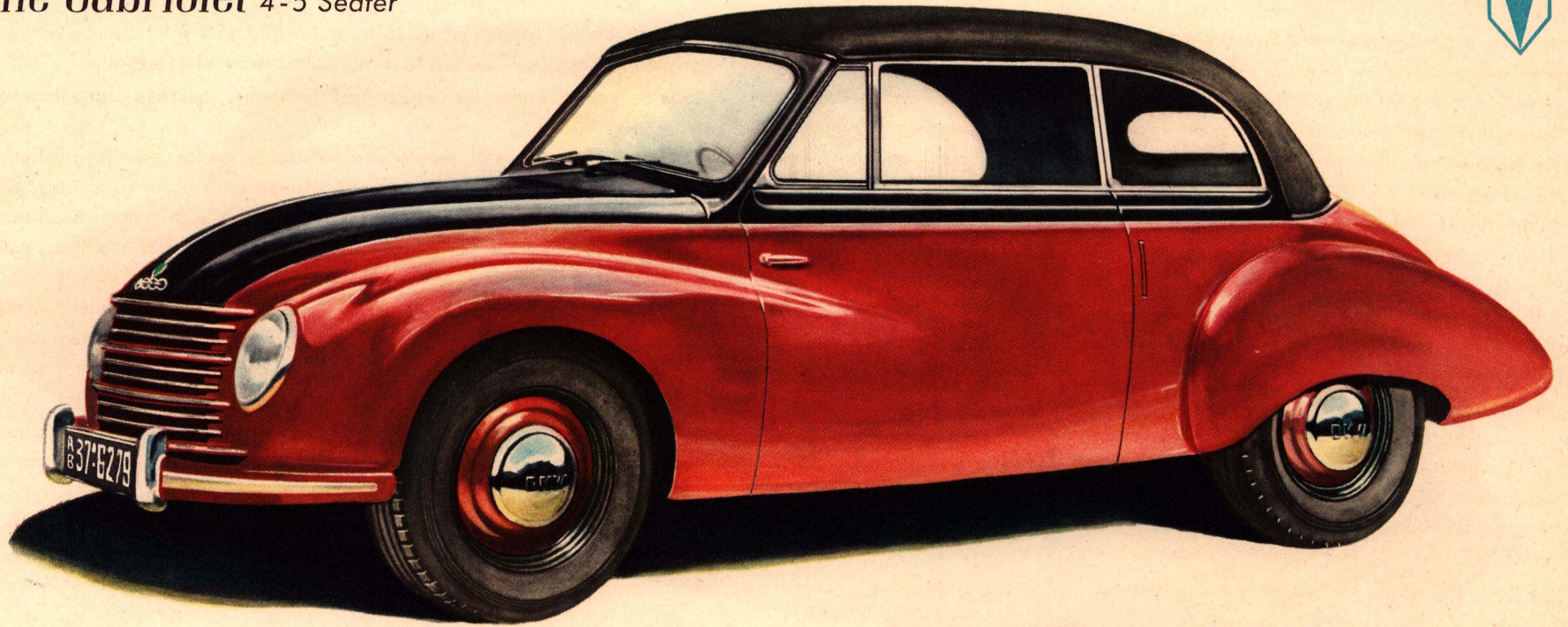
**The spacious interior** with surprisingly large legroom, headroom and width is tastefully designed. On the handsome fascia panel all instruments are within easy reach of the driver and all controls readily visible. To operate the trafficators there is no need to remove your hand from the steering wheel. All that is necessary is just a flip of the finger to the switch lever conveniently located on the steering column. Swivel windows permit draughtless ventilation. An added comfort for winter motoring are the extremely efficient heater and demister. If desired, a radio can be installed.

Severe road tests over hundreds and thousands of miles have proved the complete reliability of this redesigned AUTO UNION DKW. It is built in one of the most modern European manufacturing plants at Düsseldorf in Western Germany.

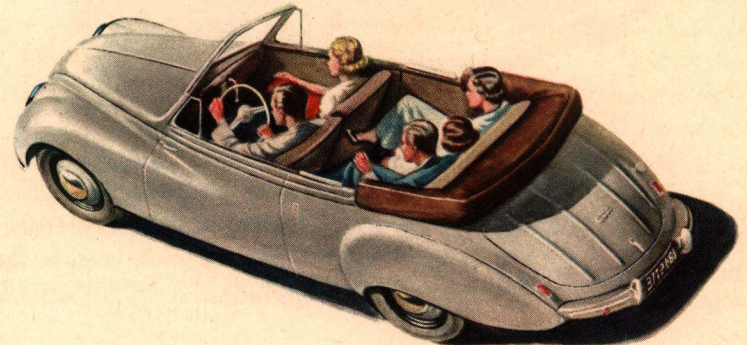
To drive the DKW "MASTER" is to start an ever-growing friendship and to join the ranks of enthusiastic DKW owners. **The new DKW car is a worthy product of the AUTO UNION DKW tradition which merits your confidence.**



## The Cabriolet 4-5 Seater



The hood can be lowered or raised easily in a few seconds. The windows turn down completely.





# SPECIFICATION

## ENGINE:

DKW twin cylinder two-stroke engine with DKW reverse scavenging and flat pistons; Thermo-siphon water cooling system with fan; fuel-saving carburettor (SOLEX); air cleaner with intake silencer; continuous petrol lubrication (oil-petrol mixture 1:25).

## ELECTRICAL SYSTEM:

150/180 watt DYNASTART combination (starter, generator and ignition in one compact unit); coupled direct to the crankshaft.

## POWER TRANSMISSION:

Multiplate clutch running in oil; gear-box with three forward speeds and one reverse (Gear ratios: 1st = 1:19.6, 2nd = 1:9.67, 3rd = 1:5.72, reverse = 1:27). Lockable free-wheeling device. Engine, gearbox, and differential in one compact unit.

## CHASSIS:

Front-wheel drive—Frame with two widely swept box section longitudinal members—Independent front-wheel suspension on transverse leaf-spring and two wishbones—Rigid rear axle with transverse leaf-spring and two guide rods (floating axle principle)—Four hydraulic shock absorbers (forward: telescopic type)—Rack and pinion steering gear with two-spoke steering wheel.

## BRAKE SYSTEM:

"LOCKHEED ATE DUPLEX" hydraulic four-wheel brakes; mechanical hand brake on rear wheels.

## ACCESSORIES:

The well equipped instrument panel and the superior styling of the interior are designed for convenience and comfort. All controls and instruments—grouped immediately in front of the driver—are clearly visible and easily accessible: speedometer with mileage counter, electrically operated fuel and water-temperature gauges, ignition system with battery discharge control lamp. Front seats adjustable while driving—Rear view mirror providing good visibility through the large rear window—Ashtrays on the fascia board and beside the rear seats—Ventilation windows on the front doors—Instrument panel indirectly illuminated for night driving.

**Note:** All dimensions, weights and capacities are quoted in Imperial (approx.) and Metric (exact) measure.

# A U T O U N I O N G · M · B · H

Manufacturing Plants at Ingolstadt / Donau and Düsseldorf (Western Germany)

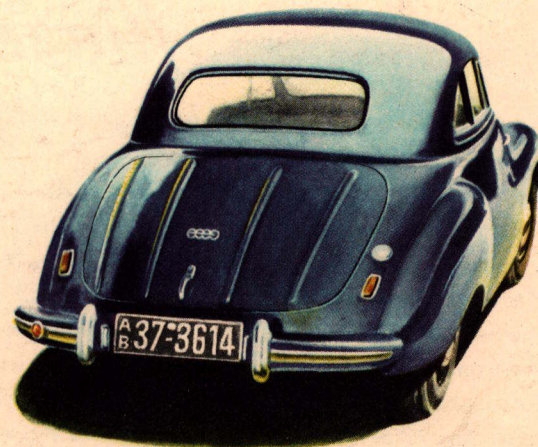
Subject to alterations without notice / Illustrations without responsibility.

## ENGINE:

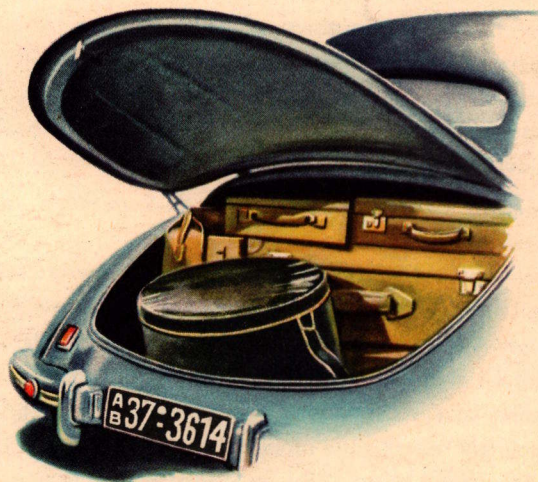
Bore and stroke . . . 3×3 ins. (76×76 mm)  
Cubic capacity . . . 42 cu. ins. (690 c.c.)  
Engine performance . 23 B.H.P. at 4500 r.p.m.  
Compression ratio . . 1:6.3

## VEHICLE:

Wheelbase . . . . . 92 ins. (2350 mm)  
Track, front . . . . . 47 ins. (1190 mm)  
Track, rear . . . . . 49 ins. (1250 mm)  
Overall length . . . . 165 ins. (4200 mm)  
Overall width . . . . . 63 ins. (1600 mm)  
Overall height . . . . 57 ins. (1450 mm)  
Weight (unladen, with petrol and water, less spare wheel and tools) 1760 lbs. (800 kg)  
Tyre size . . . . . 5.00×16  
Turning circle . . . . 33 ft. (10 m)  
Fuel tank capacity . . 7 gals. (32 litres)  
Radiator capacity . . 13 pints (7.5 litres)  
Maximum speed . . . 63 m.p.h. (100 km/h)  
Fuel consumption (excluding oil) under most economical operating conditions (mixture ratio: 1:25) . . . . 43 miles p.g. (6.25 litres/100 km)



*This rear view gives a good impression of the new "MASTER"'s roominess and of the spacious luggage locker.*



*The completely weatherproof luggage compartment is unusually spacious and easily accessible from outside. (Spare wheel, housed separately in luggage locker, can be reached without disturbing luggage.)*