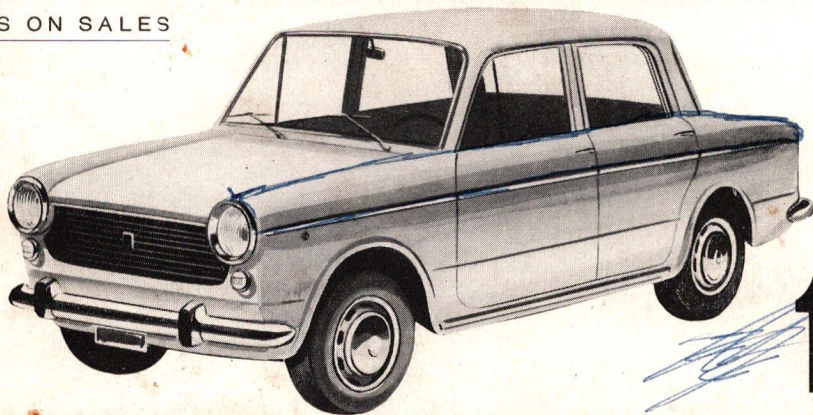




ESSENTIALS ON SALES

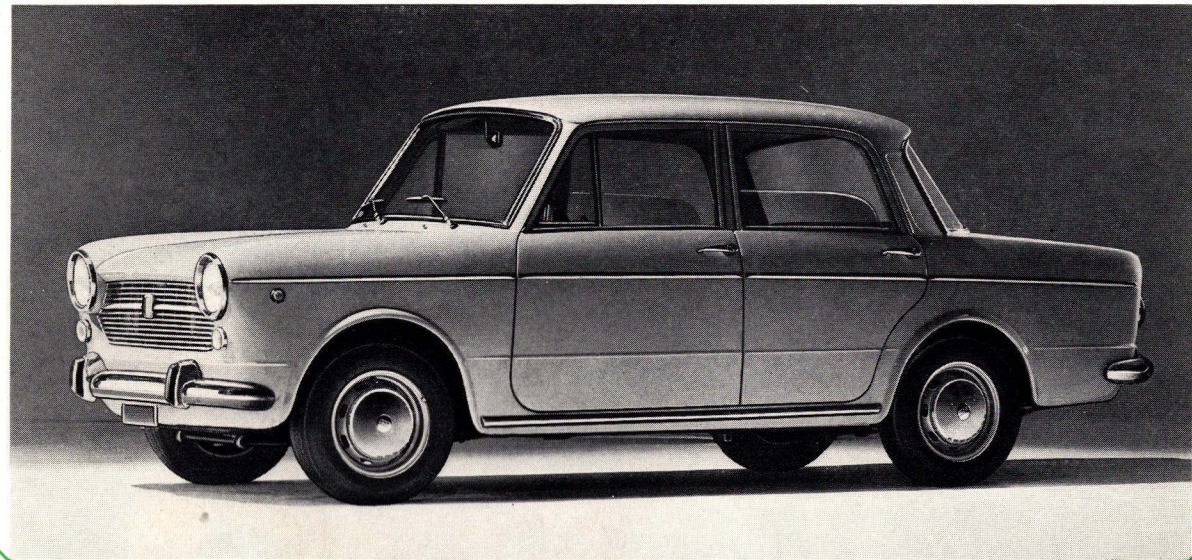


**1100** **FIAT**



**FIAT - DIREZIONE ESPORTAZIONE  
COORDINAMENTO E RICERCHE DI MERCATO**

The 1100 R adds to the prestige and success of a model which is famous all over the world.

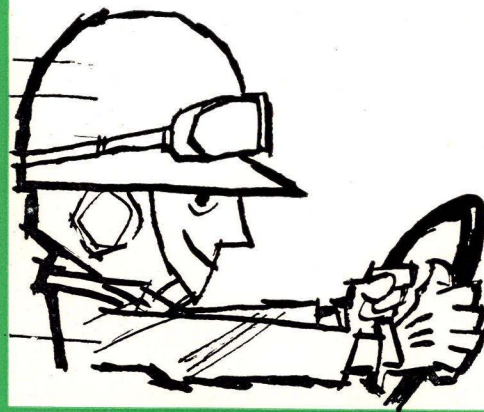




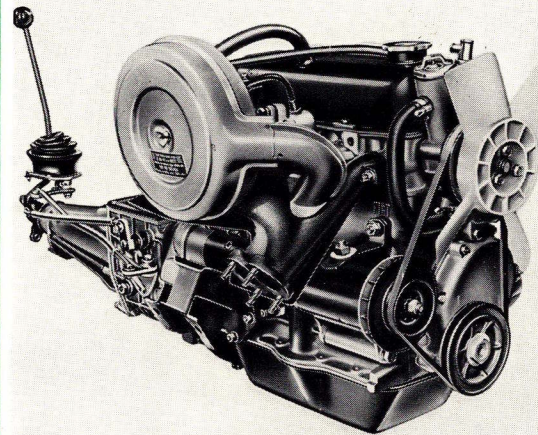
The bodywork of the 1100 R is distinguished by its pleasing and harmonious lines.



## performance

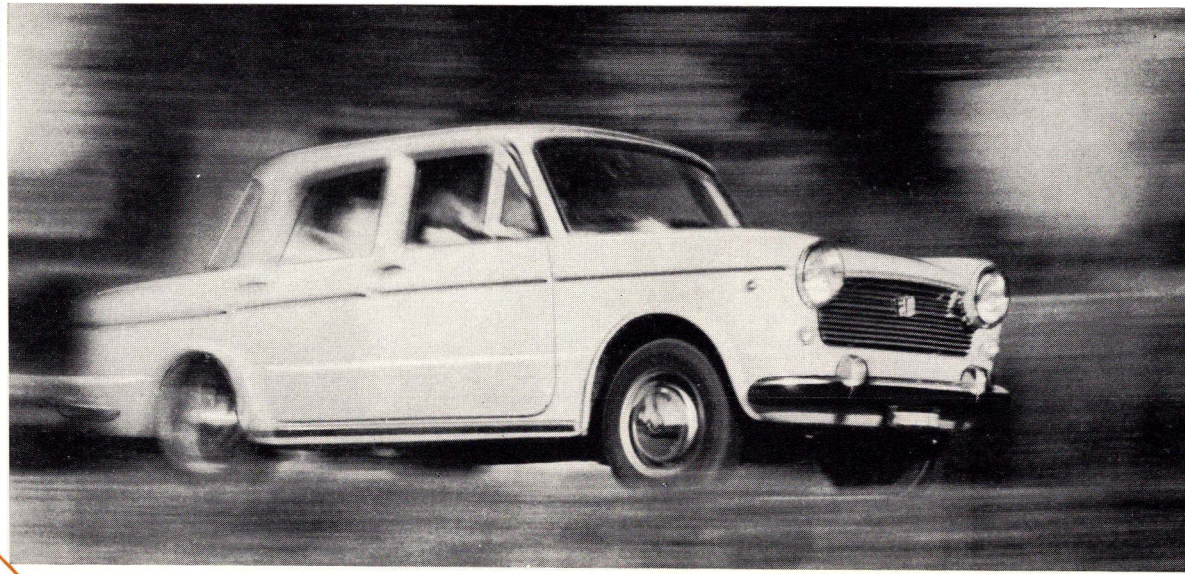


The engine of the 1100 R is a unit which triumphs in all tests.

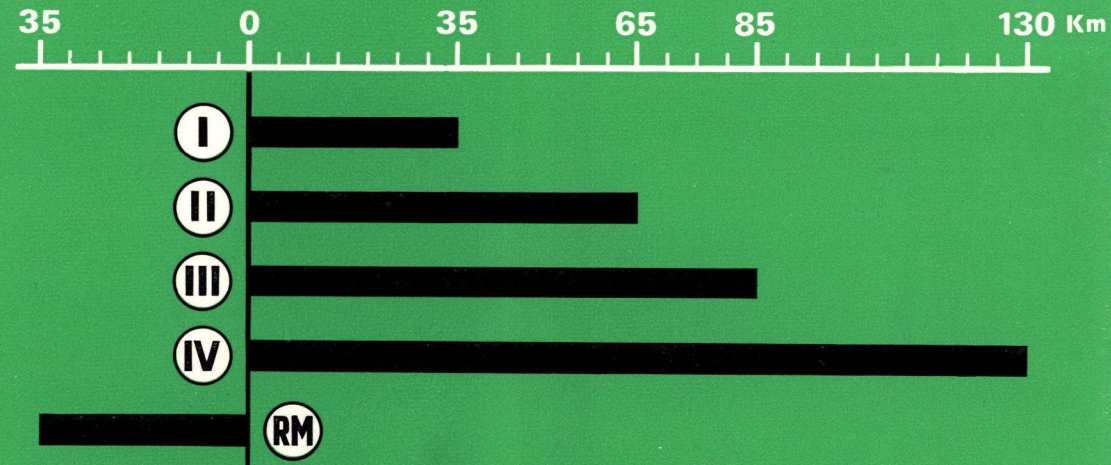




Blistering acceleration.

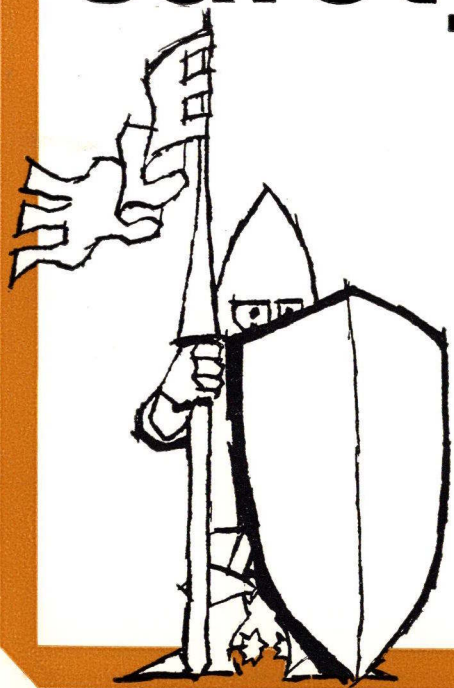


Exceptional pick-up which makes for sporting and safe driving.



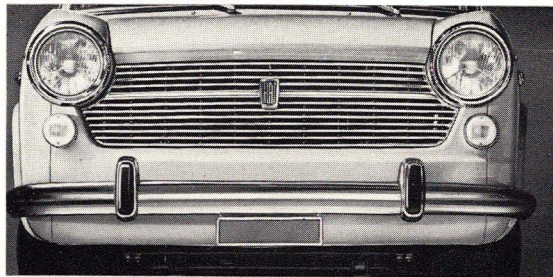


# safety

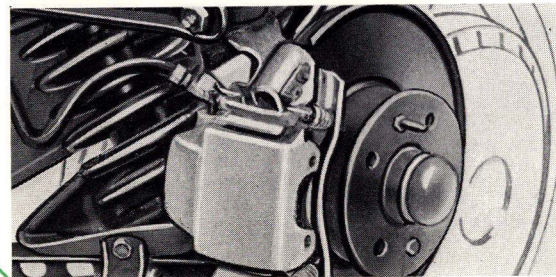
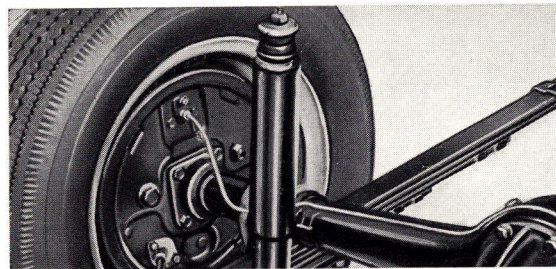


The grille and front panelling have rounded surfaces which ultimately constitute a safety feature.

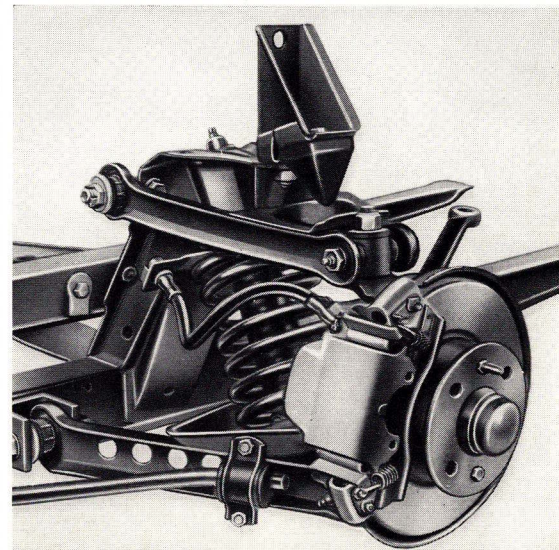
The bumpers are fitted with solid overrides with rubber buffers which are extremely practical when parking as well as in city congestion.



Exceptional stability thanks to improved suspension.



The brakes, discs on the front wheels with swinging calipers, expanding self-centring hydraulically operated drum at the rear, ensure prompt braking which is equally effective on wet or broken surfaces, or at the end of a long descent.

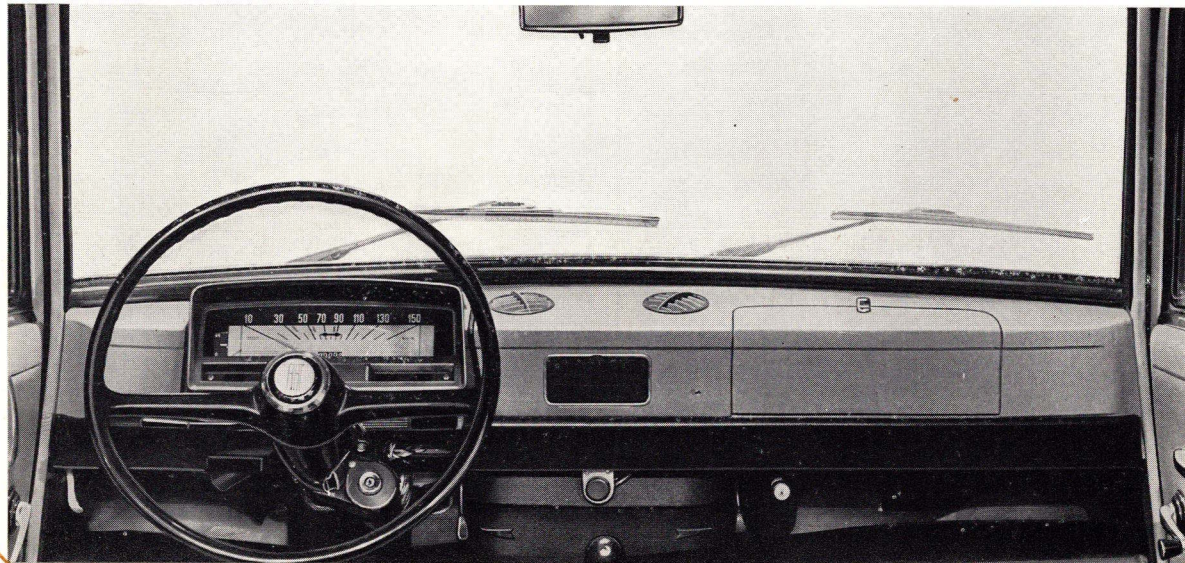




Comprehensive and functional instrumentation.

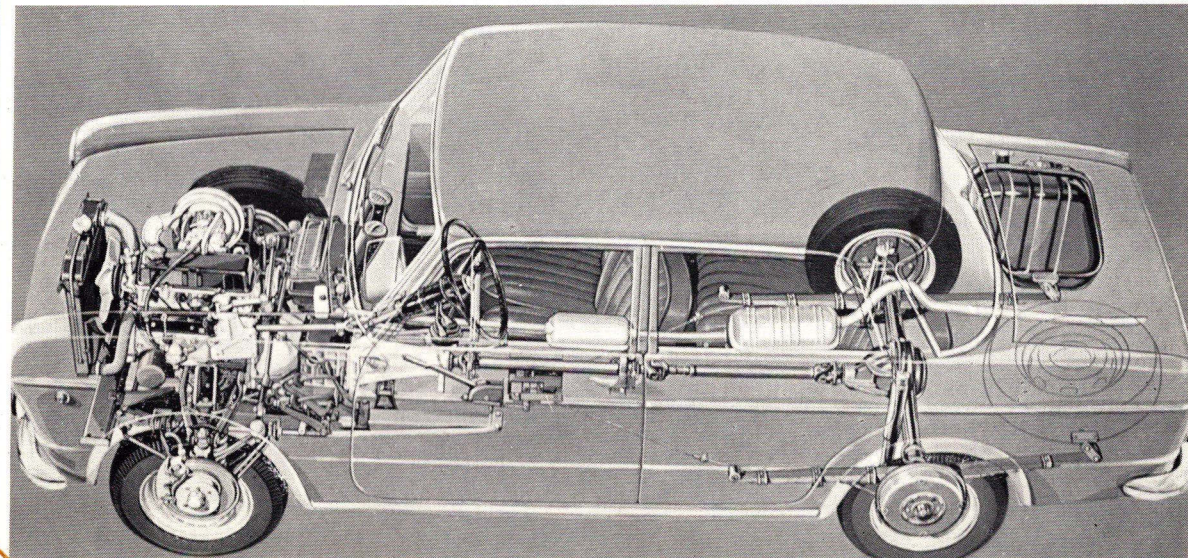
Particularly well-protected dash structure.

Quick-shifting floor-mounted gear lever.



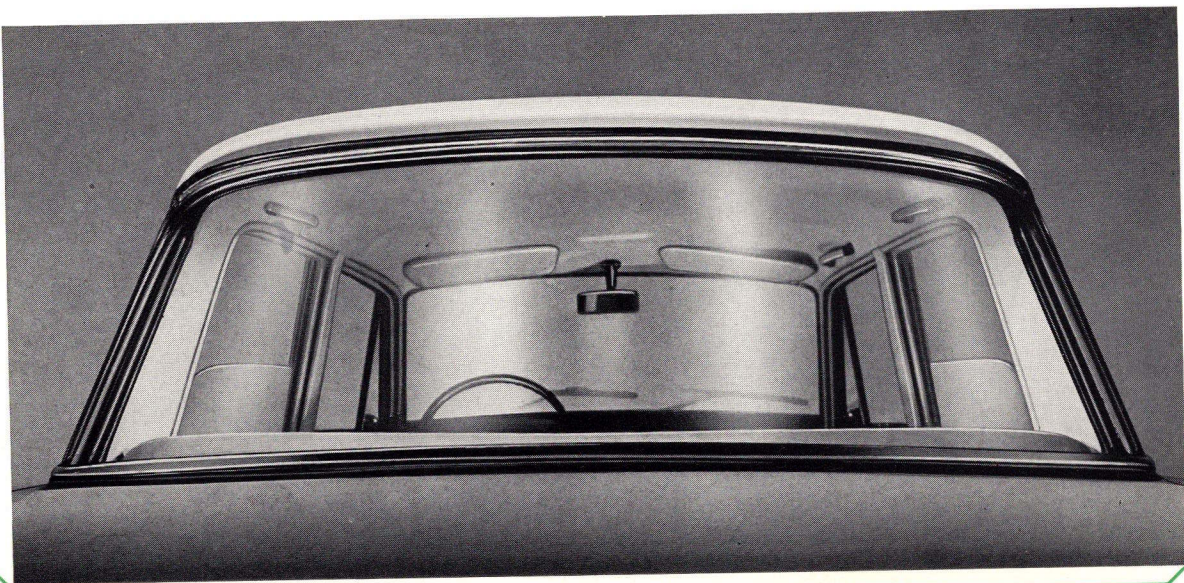
The steering wheel position, the easy gear change, and the layout of the pedals help the driver and enable him to remain in full control of the vehicle without effort under all circumstances.

Even driving in town is less fatiguing thanks to the 1100 R.





Perfect all-round visibility thanks to the large window area and extremely efficient headlights.

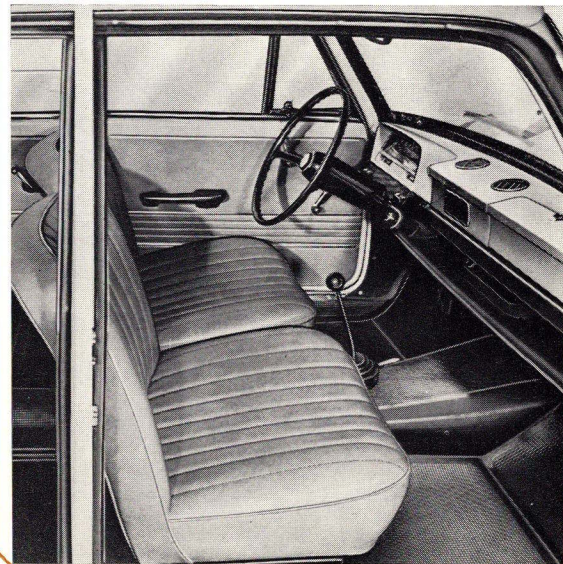


# comfort



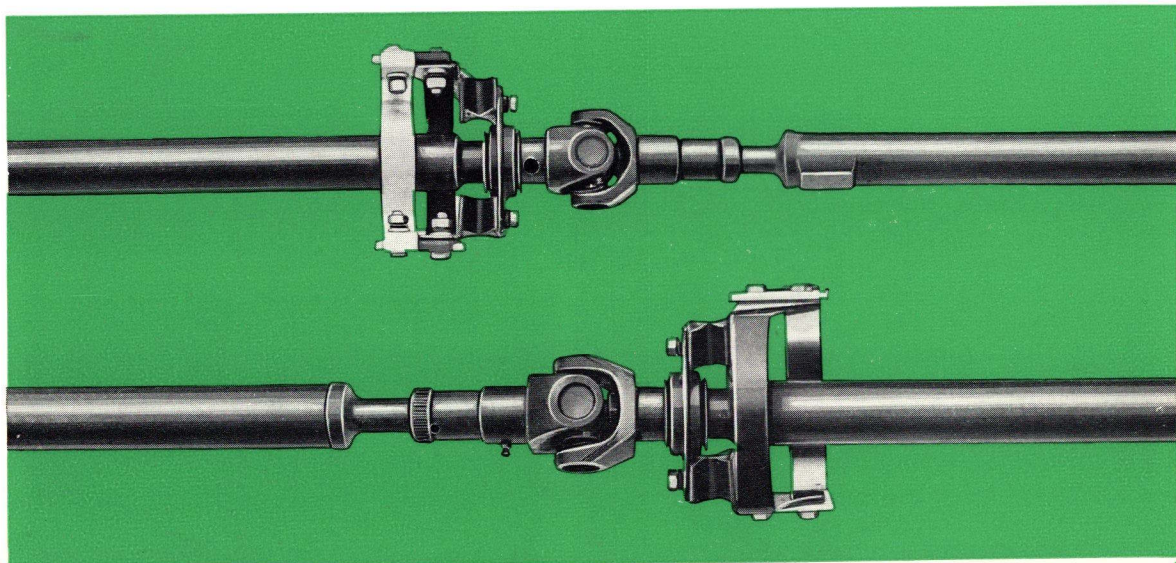
The neat finish and the heating and ventilating system ensure an extremely welcoming and pleasing interior.

The seats are designed to offer all passengers roomy and restful accommodation.

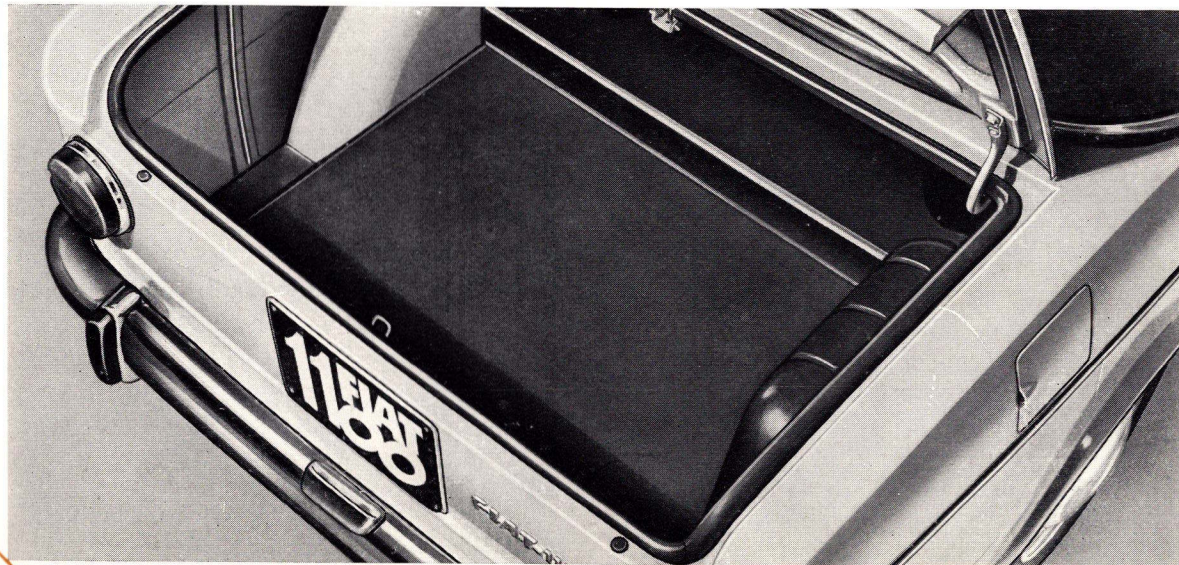




A two-piece universally-jointed transmission eliminates vibrations.

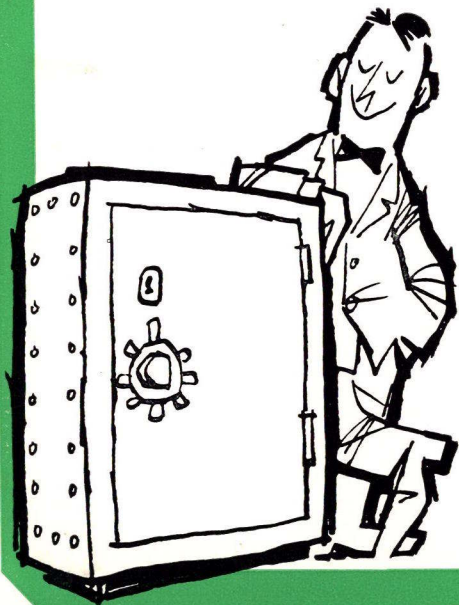


Roomy and deep boot. Capacity is 13 cubic feet.

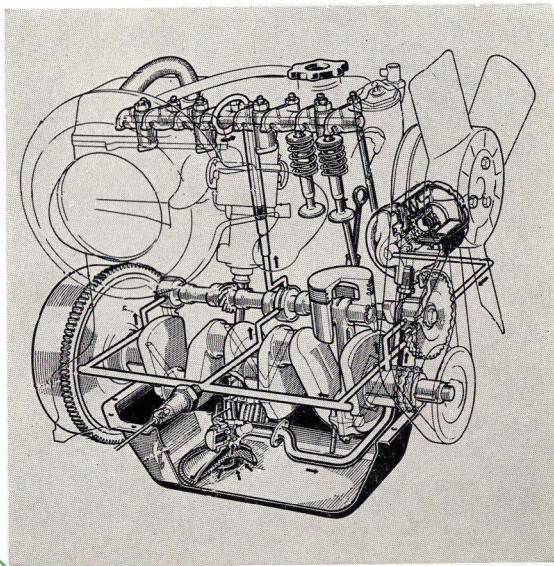




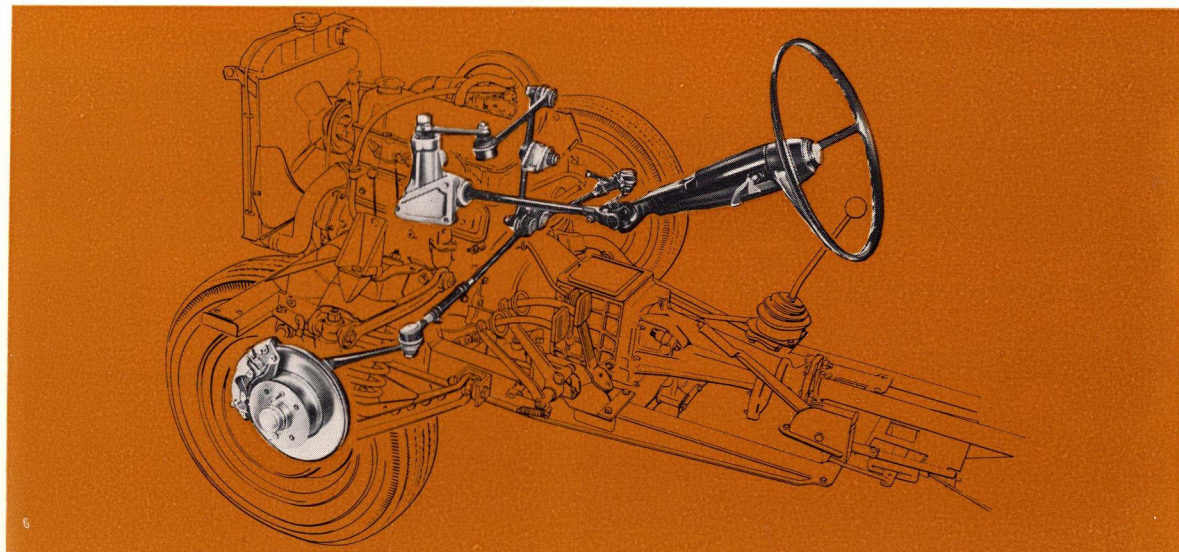
# economy



Engine oil purified by full-flow filter (oil changes needed at 6.000 miles (10.000 kms)).



The universally-jointed two-piece steering column protects the driver in the case of frontal collisions. Steering bushes sealed for life.

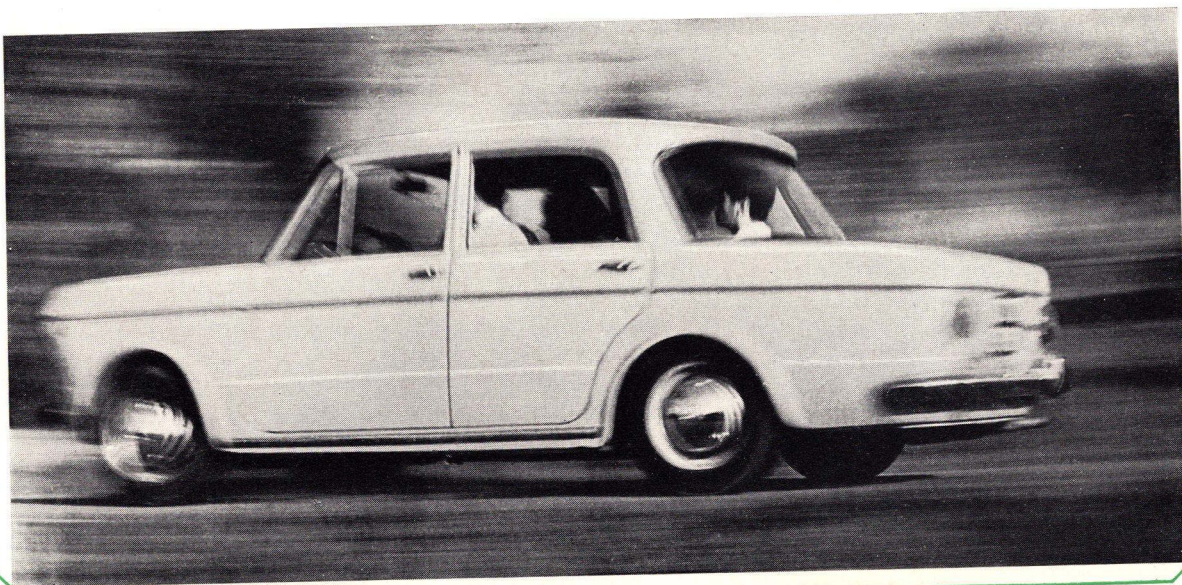




Drivers are pleased with the 1100 R, the public is interested in it and passengers are full of enthusiasm for it.

Satisfies all users:

- Young people, because of its liveliness, speediness, and road holding
- Fathers of families, because of its safety, comfort, and economy
- Ladies, because of its elegance and practicality, its light steering and easy manoeuvrability.



PRINTED IN ITALY - TIP. MERLO TORINO





**11FIAT11FIAT11FIAT**  
**100100100**

