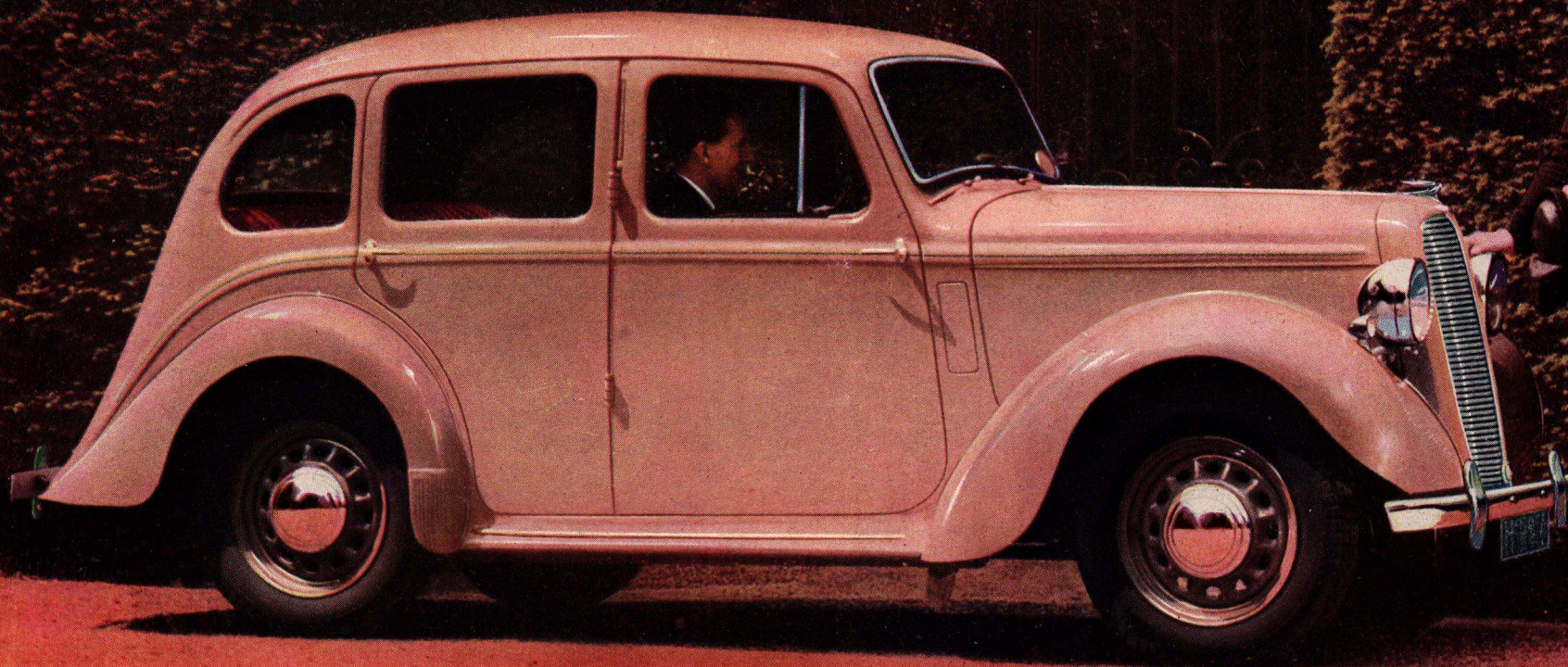


THE NEW
HILLMAN MINX





THE NEW HILLMAN MINX

COLOURS. **Saloon and Touring Saloon:** Black with Black Wings and Wheels and Brown Upholstery; Royal Blue with Black Wings and Wheels and Blue Upholstery; Dove Grey with Black Wings and Wheels and Dark Red Upholstery; Silver Grey with Black Wings and Wheels and Pastel Green Upholstery. **Saloon De Luxe** - Black with Black Wings and Wheels and Brown

Upholstery; Black with Black Wings and Wheels and Dark Red Upholstery; Royal Blue with Royal Blue Wings and Wheels and Blue Upholstery; Burgundy with Burgundy Wings and Wheels and Dark Red Upholstery; Aero Blue with Aero Blue Wings and Wheels and Pastel Blue Upholstery; Dove Grey with Dove Grey Wings and Wheels and Dark Red Upholstery; Silver Grey with Silver Grey Wings and Wheels and Pastel Green Upholstery.

Right: This Minx Coupé looks most attractive with the hood rolled back in the Coupé de Ville position.

ANOTHER 20 DOMINANT NEW FEATURES

1. **NEW ECONOMY.** Over 40 M.P.G.—47 M.P.G. by R.A.C. Observed Test. Certificate No. 788.

2. **New 4-speed all-silent Synchromesh Gear-box:** instant oil check device and filler.

3. **New rustless chromium-plated radiator grill.** New bumpers with over-riders.

4. **New Engine features:** increased smoothness, silence, reliability, economy:—New Economy Carburation, New Super-cooled Valves of special Valmax steel; many other refinements for greater reliability.

5. **New and simpler Cooling System,** deeper top water tank.

6. **New Engine Mounting** by bonded rubber cushion giving maximum smoothness.

7. **New Silent Rear Axle.**

8. **New “Smoothride” Suspension:** automatic variation to load and road surface. New piston type shock absorbers retaining positive adjustment.

9. **New roominess** in front compartment through forward position of gear-box. Gear-lever ready to hand but entirely clear of driver and passenger's knees.

10. **New “Easi-lift” Jacking System.** Eliminates stooping and soiled clothes.

11. **New Luxury chair-type adjustable front seats;** deeply cushioned backs and shoulder supports—perfect comfort for everyone.

12. **New design Instrument Panel;** quick-vision instruments; new safety oil warning light. New Petrol Gauge accurately marked in gallons or litres.

13. **New 5-in. speedometer,** flood-lit for night safety.

14. **New chromium finish** on double-acting draughtless ventilators.

15. **New safety all-steel armour top** roof.

16. **New capacious glove and parcel** recesses.

17. **New quick action “snap-on” petrol** filler cap.

18. **New moulded facia** unaffected by climatic conditions: unscratchable.

19. **New attractive Colour Schemes;** choice of seven Body and Upholstery combinations on De Luxe Models.

20. **New Headlights** giving longer and broader beams.

PLUS ALL THE MANY FEATURES WHICH HAVE MADE THE MINX SO FAMOUS





THE GREATEST VALUE IN THE HISTORY OF MOTORING

Petrol Economy of 47 m.p.g. achieved in Official Test by the Royal Automobile Club (Certificate No. 788).

There are four models in the 1939 Hillman "Minx" range—the Saloon; the Touring Saloon, which is an entirely new model; the Saloon de Luxe; and the Four-seater Drophead Coupé. Petrol economy is an outstanding feature. Over 40 miles per gallon has consistently been obtained in practical tests; in actual fact, 47 m.p.g. was recorded by the Royal Automobile Club in an officially observed test (Certificate No. 788). This amazing economy is made possible by the redesigned carburation system.

Another important development is the new all-silent four-speed Synchromesh gear-box. Altogether, there are no less than twenty new features on the new models, in addition to all those which have made the "Minx" so famous. The Hillman "Minx" is the only 10 h.p. car in the world which has been steadily developed, year after year, to higher and higher standards of engineering. It is this consistent progress which makes its reliability and value unsurpassed to-day.

LIST OF MODELS

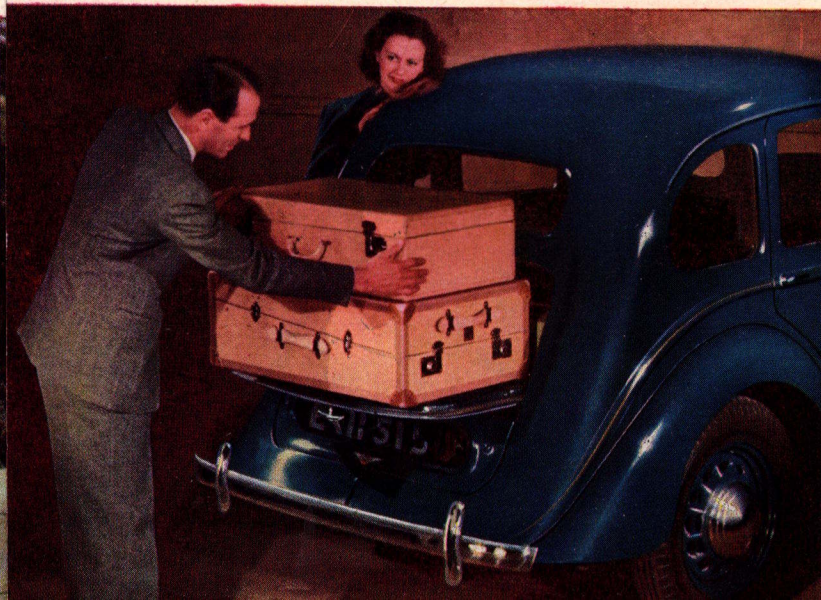
SALOON

TOURING SALOON

SALOON DE LUXE

FOUR-SEATER DROPHEAD COUPÉ

*Prices and Specifications subject to alteration without notice.
For Conditions of Sale see Company's Catalogues.*



A considerable amount of luggage can be carried on the Touring Saloon and the Saloon De Luxe, both these models having a roomy luggage locker accessible from either inside or outside. The lid of the locker forms an "armless" platform, thus placing no restriction on size of trunks carried. All manner of luggage can be carried—the "Minx" is the only light car to hold four sets of golf clubs in the locker. The spare wheel can be removed without disturbing anything.

A luggage locker is provided on the Saloon, but this is accessible from the inside of the car only, and there is no platform.



BRIEF CHASSIS SPECIFICATION

ENGINE. Four-cylinder monobloc, side-by-side valves, special design detachable head, steel-backed main and connecting rod bearings. Three-bearing crankshaft, full pressure lubrication. Three-bearing camshaft with harmonic cams. Down-draught carburettor with air silencer, giving greater economy, easier starting and high performance. Rubber "cushioned power" engine mounting eliminating vibration. Bore and Stroke 63 mm. by 95 mm. (2.48"×3.74"). Cubic capacity 1,184.5 c.c. R.A.C./S.A.E. rating 9.8 h.p.

GEAR-BOX. New four-speed all-silent Synchromesh gear-box with quick action dip-stick. Ratios:—1st, 18.99; 2nd, 13.16; 3rd, 7.94; Top, 5.33; Reverse, 25.37.

IGNITION. Coil and battery. Suction assisted automatic advance and retard. 14 mm. wide plugs for improved combustion.

FRAME. Complete "box girder" design of side members, giving immense rigidity. Four semi-box-section cross members further strengthen this frame against torsional strains.

SUSPENSION. New "Smoothride" suspension with automatic variation to load and road surface. Extra long semi-elliptic road springs with wide base. New Luvax piston-type shock absorbers (air liner practice) retaining positive adjustment. "Silentbloc" rubber bushes to shackles, eliminating ten greasing points.

STEERING. Right or left hand, optional.

WHEELS. Easi-clean. Five, easily detachable pressed panel type. Spare wheel and tyre provided as part of standard equipment.

TYRES. Dunlop "90." Extra low pressure of large section, 5.00"×16".

PETROL TANK. 7½ gallons (33 litres) capacity at rear of chassis, with quick action "snap-on" filler cap. Pump feed to carburettor with emergency primer.

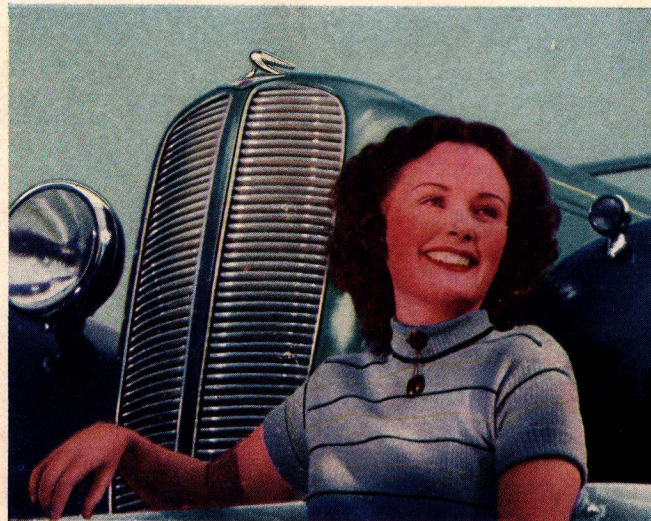
ELECTRICAL EQUIPMENT. Lucas. Three-position control of battery charging rate. Ventilated dynamo. Powerful starter operated by control on facia board. 6-volt, 63 amp. hour accumulator under bonnet. Two powerful head lamps, giving long and broad beams with dimming control. Two side lamps and tail lamp. Stop lamp operated by brake pedal pressure. "Floodlit" illumination of instruments. Electric horn. Twin screen wipers on De Luxe Models and single wiper on Saloon.

EASI-LIFT JACKING SYSTEM. D.W.S. screw type jacks. Special brackets permanently in position on bumpers. Jack operated by means of wheel brace.

TOOL EQUIPMENT. A comprehensive kit of tools, including a wheel brace, large tyre pump, etc.

CHASSIS DIMENSIONS :

Wheelbase . . . 7 ft. 8 in. (2,337 mm.)
Rear track . . . 4 ft. 0½ in. (1,232 mm.)
Ground clearance . . . 6½ in. (156 mm.)
Turning Circle . . . 36 ft. (10,973 mm.)
Overall length . . . 12 ft. 9 in. (3,899 mm.)
Weight of chassis (dry) 12½ cwt. (635 kgs.)
Weight of complete car (Saloon De Luxe) . . . 18¾ cwt. (953 kgs.)



CABLES :
Rootesmoti,
London



BY APPOINTMENT TO THE
PRINCE OF WALES 1934-6

Overseas Representatives

BURMA
BRITISH MALAYA
DUTCH EAST INDIES
AND THE FAR EAST
C. H. Hordern,
P.O. Box 255, Singapore

**INDIA AND
CEYLON**
H. H. Lilley,
72 Park Street,
Calcutta

**AUSTRALIA AND
NEW ZEALAND**
C. E. Blayney,
Kembla Buildings,
58 Margaret Street,
Sydney

WORLD EXPORTERS
ROOTES LTD.
DEVONSHIRE HOUSE,
PICCADILLY, LONDON, W.1



BY APPOINTMENT TO
H.M. THE QUEEN OF NORWAY

SOUTH AFRICA
E. C. Griffiths,
P. O. Box 1374,
Shell House,
C/r Rissik and Main
Streets,
Johannesburg

CODES :
A.B.C. 5th and 6th Edition.
Private, Bentley's

Overseas Representatives

SOUTH AMERICA
Rootes Argentina S.A.,
Calle Juan Fco Segui 3775.
Buenos Aires

**EUROPE AND
NEAR EAST**
Rootes Ltd.,
Devonshire House
Piccadilly,
London, W.1