

SALESMAN'S MANUAL

Europe



CONFIDENTIAL

MITSUBISHI GALANT





CONTENTS

Introduction.....	1	Major standard equipment	26
Key selling points.....	2	Standard & optional equipment	28
Competitive models	4	Colour chart.....	30
Exterior styling	6	Optional parts list.....	31
Interior styling	9	Major equipment list.....	32
Quietness	16	Major specifications	34
Cockpit.....	18	Specification comparison.....	35
Powerplants & transmissions	22	Model chart.....	36
Suspension system.....	24	Dimensional views	37

THE NEW GALANT

PERHAPS THE FINEST JAPANESE SALOON YET

New in every way, the all new Mitsubishi Galant more than ever reflects the progressive engineering standards of its maker. Everything about the Galant, from the tip of its aerodynamic nose to its sleek tail, has been redesigned virtually from scratch, achieving a new top-of-the-range saloon, perhaps the finest ever to come from Japan.

A class-leading aerodynamic body, a newly engineered front-wheel drive configuration, a carefully executed new suspension system, an all-new engine and two new transmissions: the new Galant features an impressive set of technological credentials. But what puts the new Galant way ahead is its vast new interior. Without being especially large externally, the new Galant is incredibly spacious inside.

The interior is larger than that of the old Galant in every way. New European-size multi-adjustable seats take full advantage of the new Galant's spaciousness, providing 6 modes of adjustment on the driver's seat (2 litre models; 5-way, all other models), a

wheel-arch-less rear seat, and careful detailing to ensure the car's occupants benefit fully from the additional space.

Occupant comfort has been further increased through applying new sound isolating measures which, together with the new aerodynamic styling and the new suspension geometry, make the new Galant much quieter than its notably quiet predecessor. And its competitors.

Ergonomics, the science which studies the relationship between machine and operator, was extensively employed in designing the new

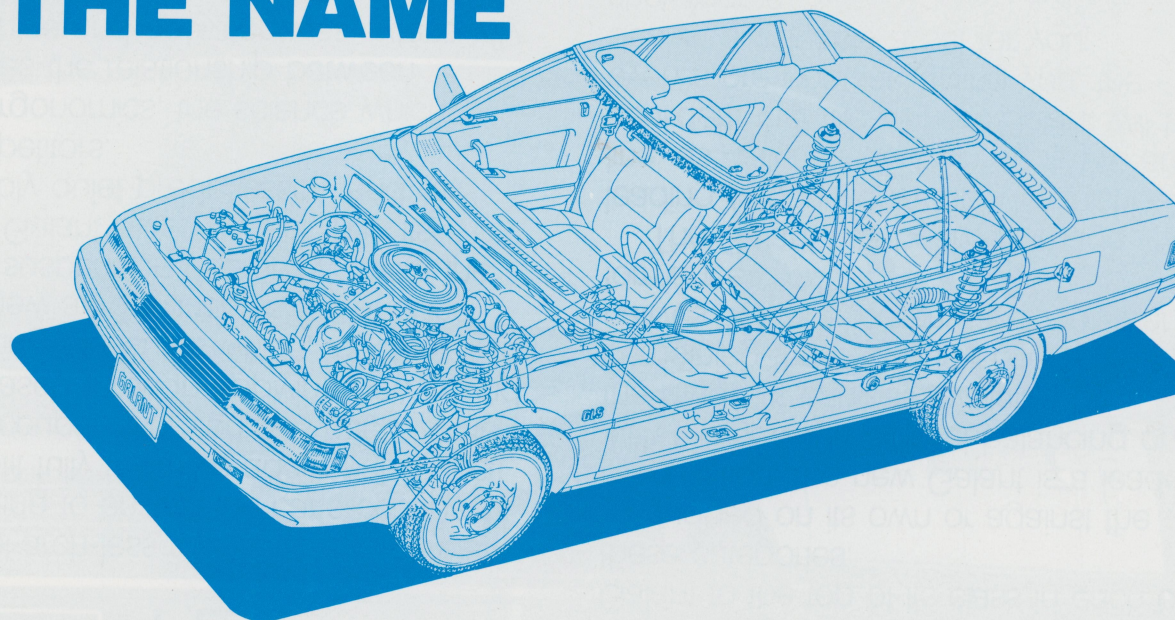
Galant's cockpit. All major controls are at the fingertips; the instrument display is a paragon of elegance and efficiency.

The new Galant puts power on the road through a new transverse drive-train and new transmissions. The power supply choice is between the well-proven 1.6 and 2.0 litre normally aspirated engines, the popular ECI-TURBO, or the brand new 1.8 litre intercooled turbodiesel. Each power unit is designed to propel the new Galant to the top of its class in each of these categories.

Judged on its own or against the competition, the new Galant is a leader with the new turbodiesel balancing out the range of engines available by combining the previously offered alternatives of fuel economy and high performance.

The Galant has been an image leading saloon within the Mitsubishi line, as well as in its own right. We are confident that the all new Galant will be even more popular, giving you, the dealer, a valuable asset for your showrooms.

THE NEW GALANT—EVERYTHING'S CHANGED BUT THE NAME



1 NEW AERO STYLING

- Wedge shape, technologically advanced yet elegant in appearance, makes the new Galant stand out from the crowd.
- Wedge shaped body developed for high aerodynamic performance minimizes drag and lift, and is the product of exhaustive wind tunnel testing.
- Flush body surfaces yield very good aero coefficients—0.36 C_D and 0.20 C_L .
- Designed to part the air cleanly, air is directed smoothly over the top, underneath and around the sides, creating a minimum of drag-generating turbulence.
- Flush body surfaces with a minimum of protrusions and depressions, concealed wipers and wraparound windows ensure a smooth passage of air over the body.
- The result of the aforementioned attention to aerodynamic design and detail is a remarkably low 0.36 C_D (coefficient of drag) and an equally low 0.20 C_L (coefficient of lift), attesting to the Galant's sophistication and potential for economy.
- Darkened lower body, raised roof-line and larger window area give the new Galant a spacious, airy appearance that ideally matches the car's capaciousness inside.

2 NEW ROOMINESS, NEW QUIETNESS

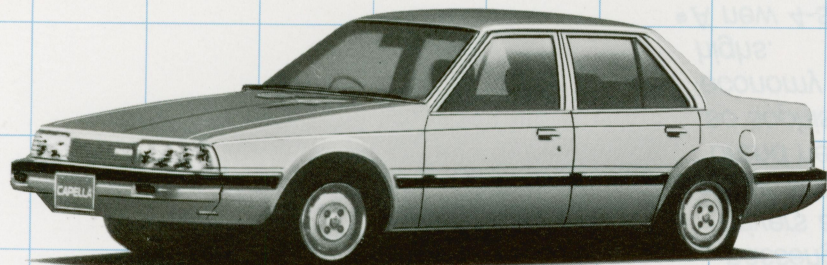
- Interior designed to be as roomy as a larger class car. Legroom measures 1685 mm front to rear—all of it useable—within the Galant's 1920 mm interior length.
- Multi-adjustable European-size seats ensure comfort for all, providing optimum support and minimizing road fatigue.
- Sophisticated technology produces ultra-low noise levels equal to a car a class higher. In the front passenger seat (2 litre models), the noise level at 100 km/h is only 64 dB.
- The interior of the new Galant is the roomiest in its class with both more available space and better use of that space than any of its competitors.
- For the driver, the new ergonomically designed Wing Column Control Centre puts controls at the fingertips, maximizing safety and convenience (GLX and above).
- Accommodating three adults in the rear, rear seat legroom is particularly generous, allowing passengers to cross their legs and stretch out.
- The expansive window area provides a bright, airy interior.
- The huge new boot—360 litres ISO method, VDA method 430 litres—provides ample luggage space.
- Special soundproofing materials and techniques combined with a state-of-the-art aerodynamic body shell and a sophisticated engine/powertrain combination, ensure levels of refinement and comfort unprecedented in this class of automobile.

3 NEW PERFORMANCE

- New transmissions, including Mitsubishi's unique ELC (Electronic Control) transmission for all automatic models.
- Super Balance suspension for dynamic handling and an excellent ride—gives passengers a new level of riding comfort, drivers a new level of driving excitement.
- Four superb Mitsubishi engines, including a brand new 1.8 litre intercooled turbodiesel so sophisticated that it raises diesel economy and turbo performance to new highs.
- A new 4-speed ELC automatic that combines the performance and economy of a manual with the convenience of a conventional automatic. Its electronically controlled torque converter progressively eliminates slip to create the kind of powertrain performance previously found only in manual transmissions.
- A new 5-speed manual transmission features a push-pull cable-type shift linkage, providing a positive shift feel while eliminating the noise and vibration of conventional rigid linkage designs.
- The Super Balance suspension system, by combining the best qualities of a number of suspension designs, achieves that elusive goal of providing excellent road handling for the driver and riding comfort for the passengers.
- Combining the previously available alternatives of high performance and economy, the new 1.8 litre intercooled turbodiesel beautifully complements Mitsubishi's engine line-up. In addition are the proven 1.6 and 2.0 litre normally aspirated engines and the popular performer—the 2 litre ECI-TURBO.

AND THE COMPETITION

Know your enemy and you'll be able to see why the new Galant compares more than favourably with these models.



Mazda 626



Nissan Bluebird



Toyota Camry

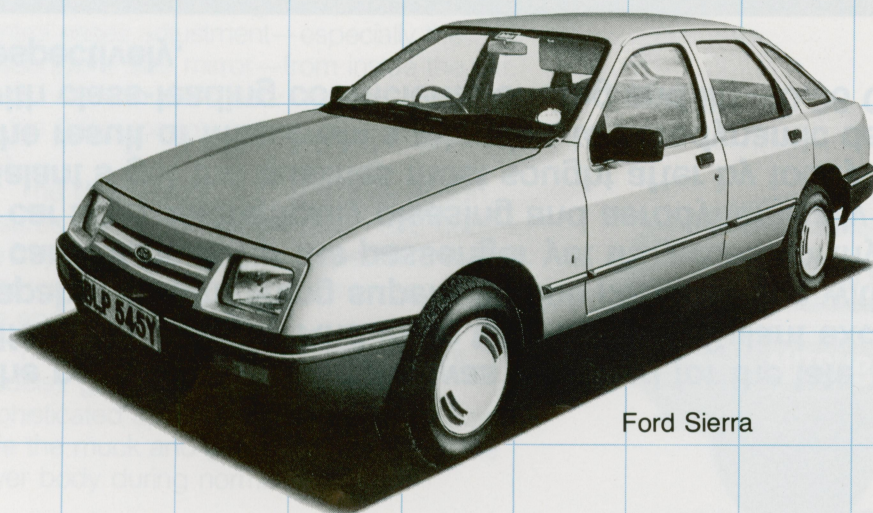


MITSUBISHI
GALANT 1600GL

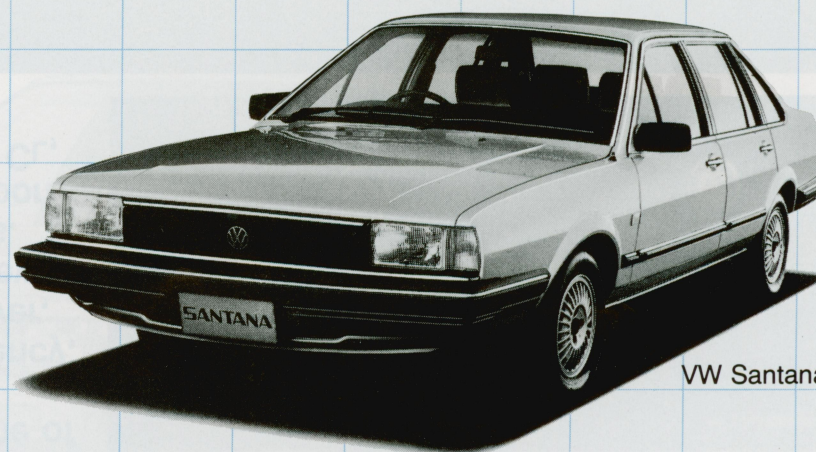
Surrounded by a field full of such stiff competitors as the VW Santana and the Ford Sierra, the all-new Galant, more than able to hold its ground, will lead the pack. In terms of performance, with the exciting ECI-TURBO. In terms of economy, with the frugal 1.6 litre engine. In terms of both, with the new 1.8 litre turbodiesel.



MITSUBISHI
GALANT
2000GLS



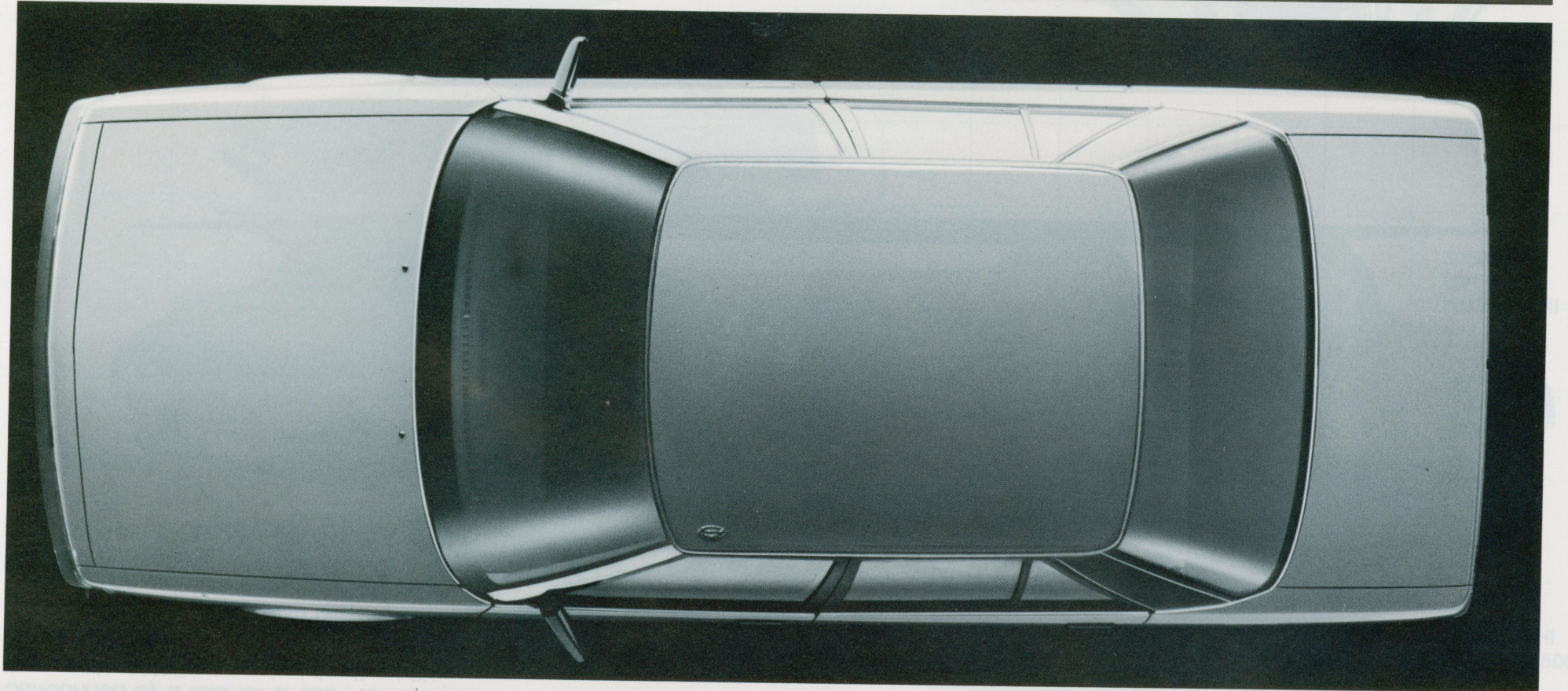
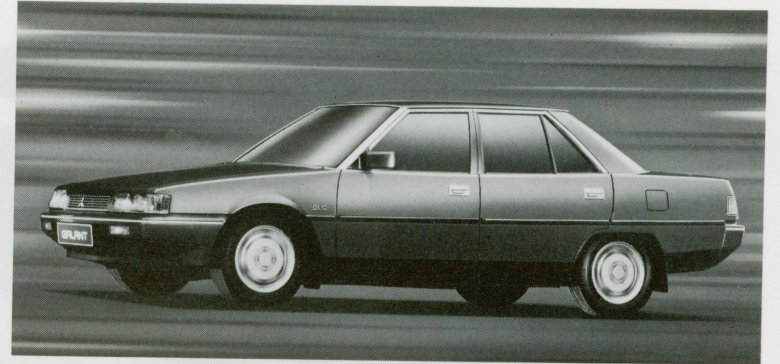
Ford Sierra



VW Santana

AERODYNAMIC EXCELLENCE

The new Mitsubishi Galant was designed for the late 1980's, a time of difficult questions. And in its time the new Galant excels. A car capable of combining superb engine performance with fuel efficiency, a car luxurious for the passenger yet truly roadworthy for the driver, a car both aesthetically pleasing and aerodynamically pure, the new Galant's got the qualities most sought after by today's car buyers. The result of Mitsubishi's attention to aerodynamic detail is a saloon with class-leading coefficients of drag and lift—0.36 C_D and 0.20 C_L , respectively.



The new Galant's soft, rounded body surfaces, slim, flush headlamps, semi-concealed wipers (fully-concealed, GLX and above, excl. TURBO), contoured door mirrors and wrap-around rear window attest to the aerodynamic excellence of this saloon and the hours spent in the wind tunnel.

The headlamps' height was kept to a minimum, keeping the nose low for optimum aerodynamic performance. The lamps lie flush with the body work, further reducing drag. Dual beam halogen bulbs for optimum nighttime visibility are standard.

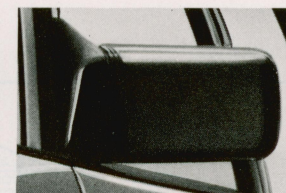
Integral air-dam skirt furthers the aero benefits of controlling air flow under the body to reduce lift for greater stability and drag for greater fuel economy. TURBO model also features large boot lid ducktail.

The semi-concealed wipers are tucked under the trailing edge of the bonnet to create a cleaner path for the air. They also improve the car's appearance and don't obstruct the driver's field of vision. Models GLX and above are equipped with fully concealed wipers. (excl. TURBO)

The remote control door mirrors are styled for aero efficiency and good looks. Remote control eases adjustment—especially the passenger's side mirror—from inside the car. Electrically controlled door mirrors are standard on the 2 litre models (opt. other models, excl. EL).

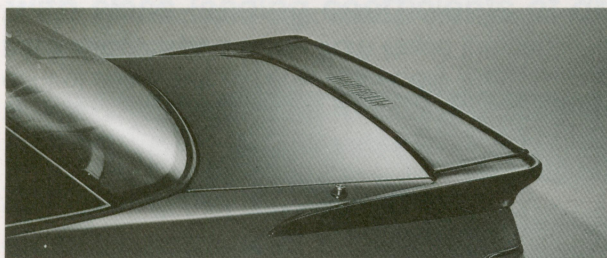
The wraparound rear window's design ensures excellent rearward vision and adds to the airy interior. The large wraparound design ensures an excellent field of vision and a distinctive appearance.

The darkened lower body (std. 2 litre models), gives the car an extra-slim, sophisticated appearance. Moreover, it helps hide the muck and grime that collect on the lower body during normal driving.



TURBO TREATMENT

Standard on the ECI-TURBO, the sporty looking front air dam and rear spoiler look good, improve fuel efficiency and increase high speed driving stability.



The final result of this attention to aerodynamics is a class-leading combination of a 0.36 C_D and a 0.20 C_L .

- Low, slanted nose and high tail create a wedge profile that slices cleanly through the air.
- Integrated front air dam skirt under the front bumper improves high speed stability and reduces drag by controlling the airflow under the body.
- Smooth aerodynamic lines created by soft, rounded body surface interfaces, flush surfaces, slim contoured flush headlamps, concealed wipers, contoured door mirrors, and an attractive wraparound rear window.

C_D/C_L Figures

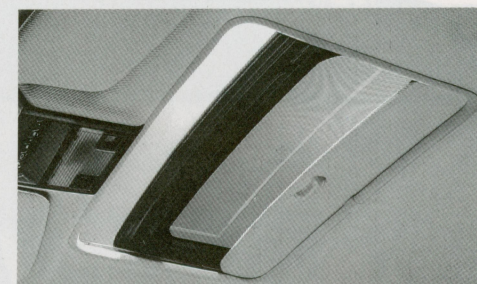
	C_D	C_L
NEW GALANT	0.36	0.20
GALANT	0.41	0.33
Bluebird	0.40	—
Corona	0.42	0.29
Mazda 626	0.36	0.25
Toyota Camry	0.41	0.28
Nissan Laurel (200L)	0.41	—

NEW ANTI-RUST MEASURES

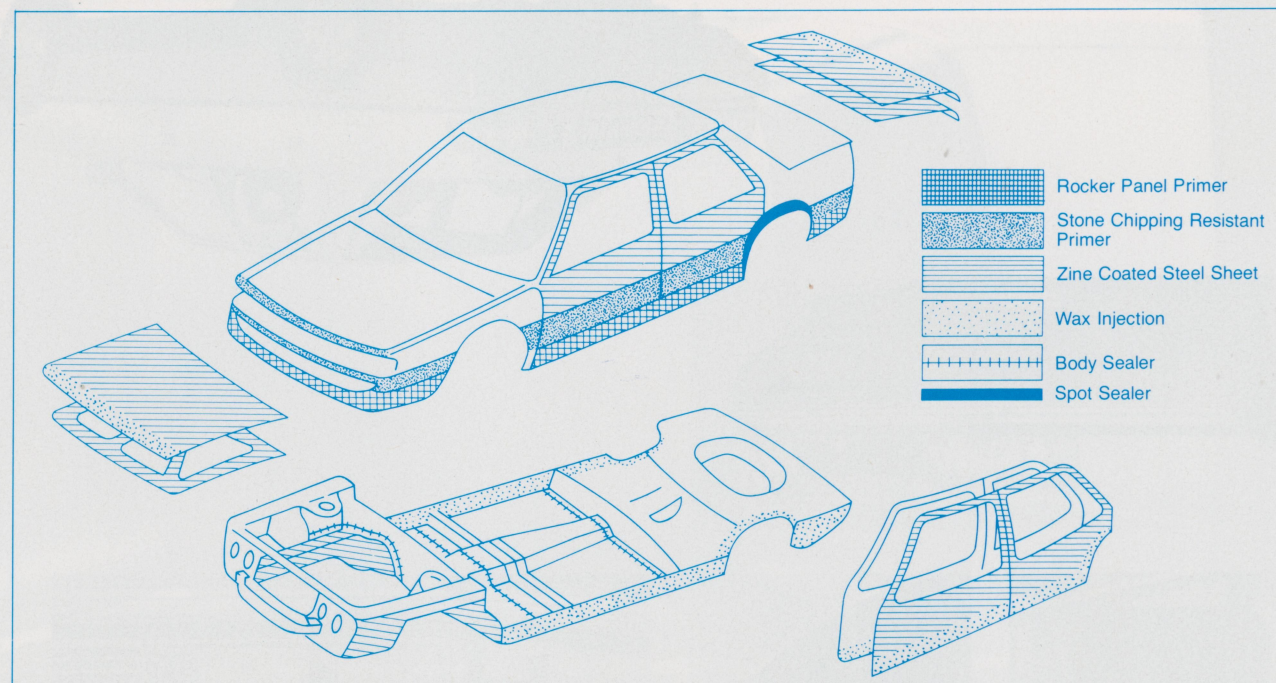
Now standard on all models are new anti-rust measures which have been adapted in conjunction with a planned 6 year anti-rust guarantee. In addition to earlier measures which

ELECTRICALLY OPERATED GLASS SUNROOF

Optional on the new Galant is an electrically operated glass sunroof (excl. EL).



included zinc plated anti-rust steel and cationic paint, the new protection measures include sealer improvements, a strengthened primer coat and wax injection.

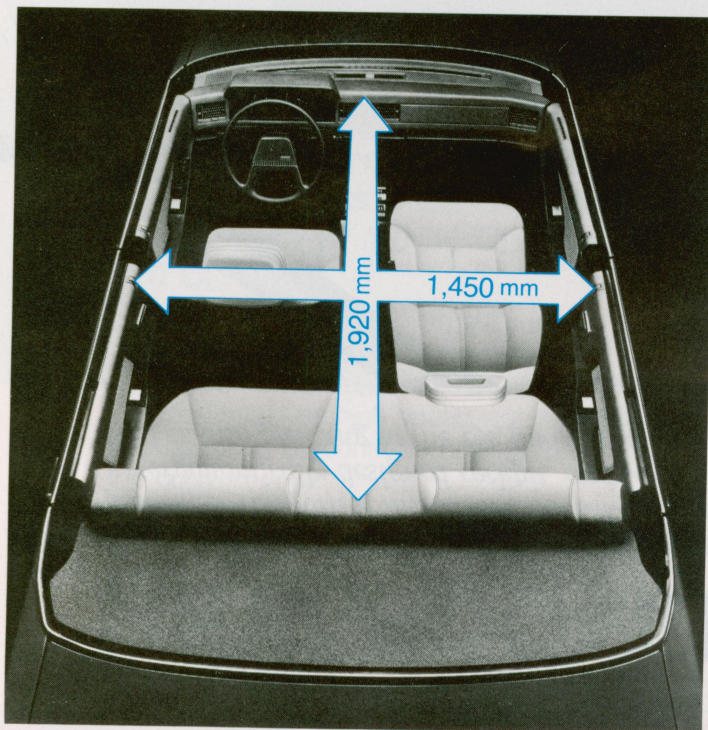


NEW ROOMINESS AND LUXURY

The new Galant has been designed above all to be a roomy and luxurious saloon, unrivalled in its class for passenger comfort. Thus it is endowed with exceptional legroom front and rear, multi-adjustable seats, an ergonomically designed cockpit, and unprecedented refinement. These are combined in an interior package that is also pleasing to the eye and has an air of true luxury.



- Not only a major improvement over the previous Galant, the interior of the all new Galant is wider, longer and has top class legroom.
- The interior of the new Galant is so roomy, in fact, it compares favourably with many externally much larger cars.
- The difference is not just in terms of absolute space but in the way that space is used; minute attention to detail ensures maximum utilization of space for optimum occupant comfort.
- Coordinated interior design harmonizes the front and rear to emphasize the sense of roominess.

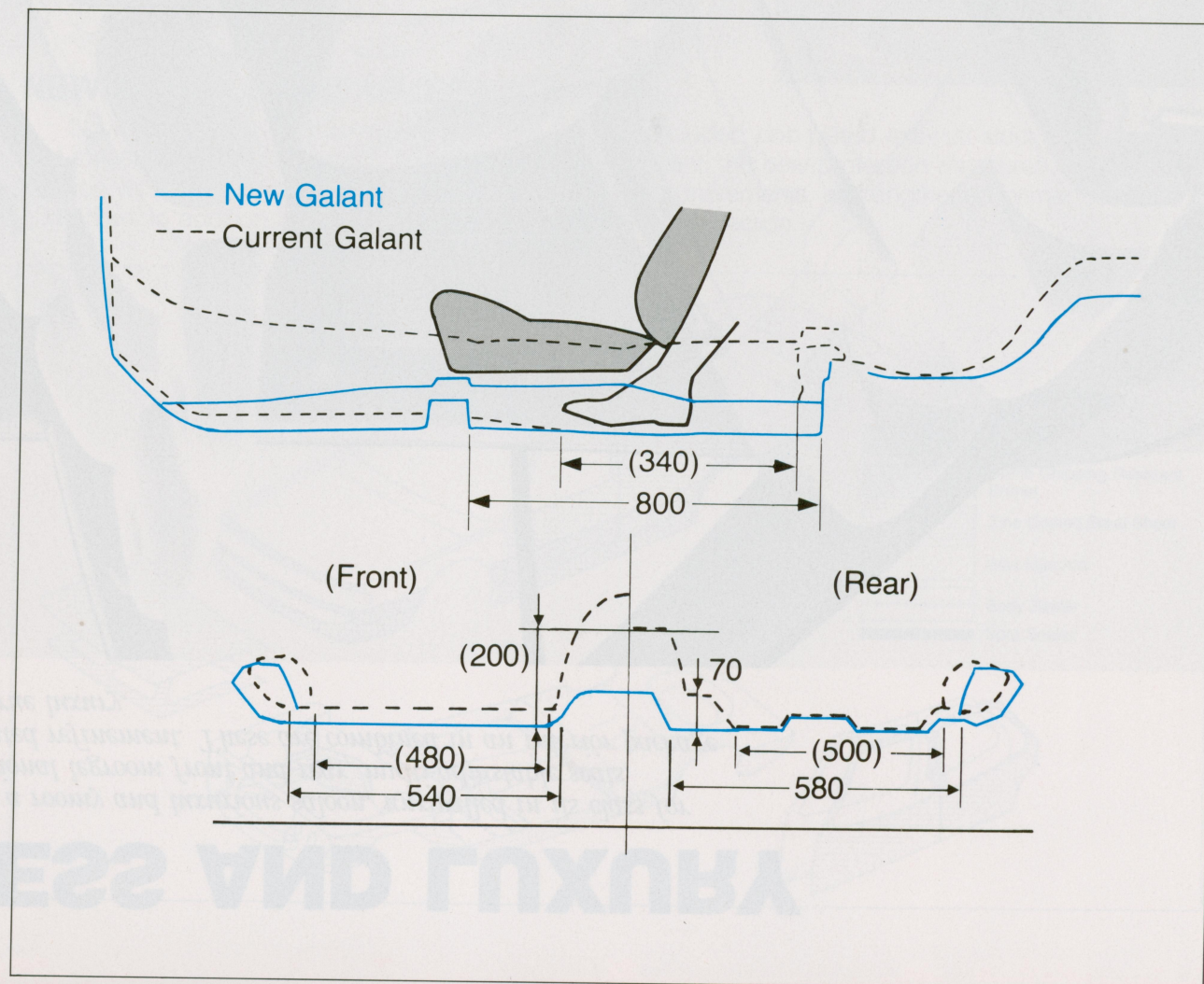


AN IMPRESSIVE LIST OF FEATURES CONTRIBUTING TO CABIN COMFORT

1. Longer wheelbase, now extended to 2600 mm
2. Longest legroom— 1685 mm—and interior— 1920 mm
3. Dashboard set 60 mm further away from the driver
4. Rear wheel arches do not intrude into cabin
5. Boot space increased to 360 litres ISO method; 430 litre VDA method.

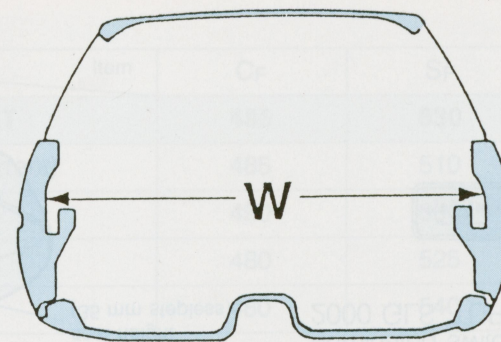
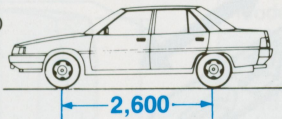
COMPACT CENTRE TUNNEL

- The centre tunnel is much smaller and more compact than other cars in its class, thanks to the adoption of front-wheel-drive and Mitsubishi technology.
- Benefits of a smaller centre tunnel include greater foot space—front and rear—and more comfortable seating in the rear seat.



LONGER WHEELBASE AND WIDER TRACK

- The wheelbase has been extended to 2600 mm and the track widened to 1445 mm at the front and 1405 mm at the rear for more interior space.
- The longer wheelbase and wider track have also greatly increased handling, stability and ride comfort to cosset passenger over all road surfaces.



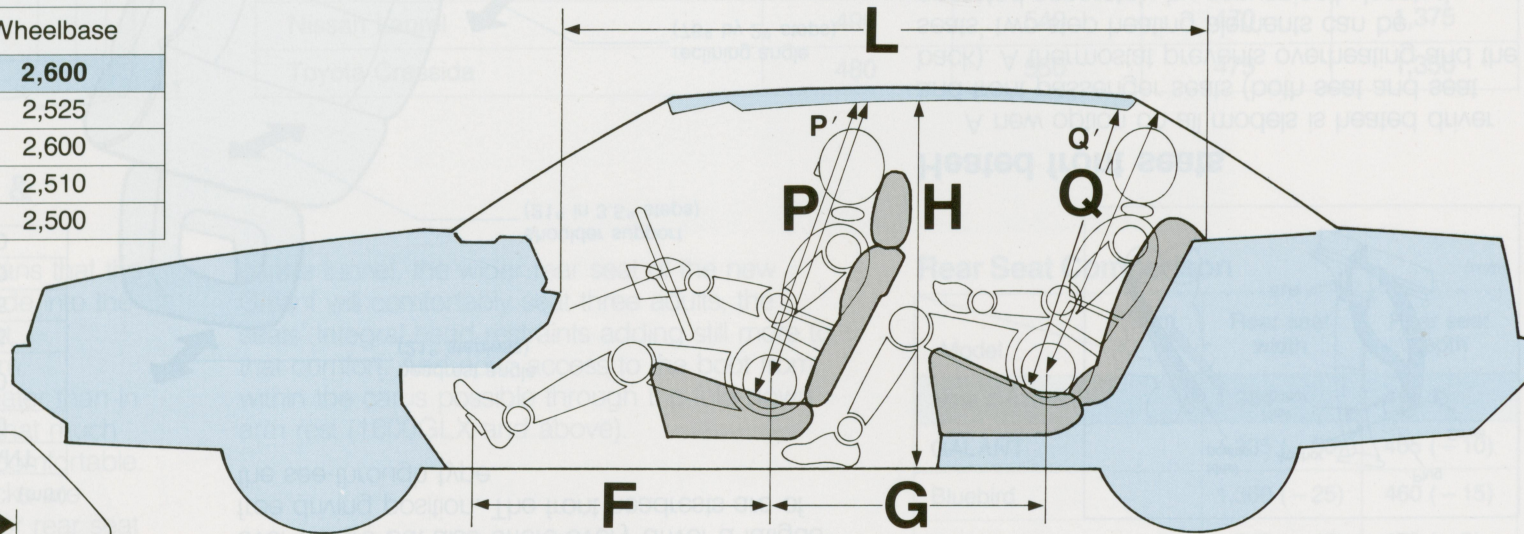
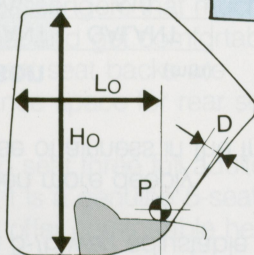
Wheelbase Comparison

(mm)

Models	Item	Wheelbase
NEW GALANT		2,600
Bluebird		2,525
Toyota Camry		2,600
Mazda 626		2,510
Toyota Corona		2,500

LARGE REAR DOOR OPENINGS

- The raised roofline and long wheelbase have made it possible to equip the new Galant with the largest rear door openings in this class of automobile, ensuring optimum ease of entry and exit.



Rear Door Height Comparison

(mm)

Models	Item	Ho	Lo	D
NEW GALANT		935	580	55
GALANT		915	580	35
Bluebird		925	535	60
Corona		920	530	50
Mazda 626		930	—	—
Toyota Camry		900	570	25
Nissan Laurel (200L)		920	575	70
Toyota Cressida		940	565	50

Interior Space Comparison

ISO (mm)

Model	Item	Legroom (F + G)	Front headroom P (P')	Rear headroom Q (Q')	Interior length (L)	Interior width (W)	Interior height (H)
NEW GALANT		1,685	870 (972*)	840 (942*)	1,920	1,450	1,150
GALANT		1,625 (− 60)	860 (− 10)	815 (− 25)	1,760 (− 160)	1,370 (− 80)	1,130 (− 20)
Bluebird		1,615 (− 70)	835 (− 35)	815 (− 25)	1,810 (− 110)	1,385 (− 65)	1,130 (− 20)
Corona		1,595 (− 90)	850 (− 20)	820 (− 20)	1,850 (− 70)	1,380 (− 70)	1,145 (− 5)
Mazda 626		1,660 (− 25)	870 (± 0)	840 (± 0)	1,860 (− 60)	1,420 (− 30)	1,160 (+ 10)
Toyota Camry		1,670 (− 15)	890 (+ 20)	845 (+ 5)	1,875 (− 45)	1,415 (− 35)	1,160 (+ 10)
Toyota Cressida		1,640 (− 45)	850 (− 20)	840 (± 0)	1,890 (− 30)	1,405 (− 45)	1,155 (+ 5)
Nissan Laurel (200L)		1,655 (− 30)	875 (+ 0)	820 (− 20)	1,860 (− 60)	1,410 (− 40)	1,150 (± 0)
Mazda 929		—	—	—	1,860 (− 60)	1,410 (− 40)	1,150 (± 0)

* ADAC method.

RIDE COMFORT STARTS AT THE SEATS

The seating in the new Galant has been developed with an eye on the science of orthopedics to ensure that every passenger is seated in the kind of comfort that does not wane with distance. The careful study of two sciences, orthopedics and ergonomics, has resulted in a driver's seat of unprecedented comfort—for anyone. The new seat is not only much larger and thicker than its predecessors, but is also multi-adjustable, offering every driver a fatigue-free driving position. The new seats are equipped with see-through head restraints, giving the driver a greater field of vision.

FRONT SEAT COMFORT

- Seats 20 mm wider and deeper and 10 mm thicker. Increased interior dimensions have made room for the use of new, improved passenger seats and a 5-/6-way adjustable driver's seat.
- The dashboard has been more deeply recessed to add a sense of airiness in the front.

Front Seat Comparison

(mm)

Model	Item	New GALANT	GALANT
Width		530 (+ 20)	510
Cushion thickness		60 (+ 10)	50
Seatback height		575 (+ 30)	545
Headrest height		220 (+ 65)	155
Slide pitch		10	20
Seat-rail track		540 (+ 100)	440

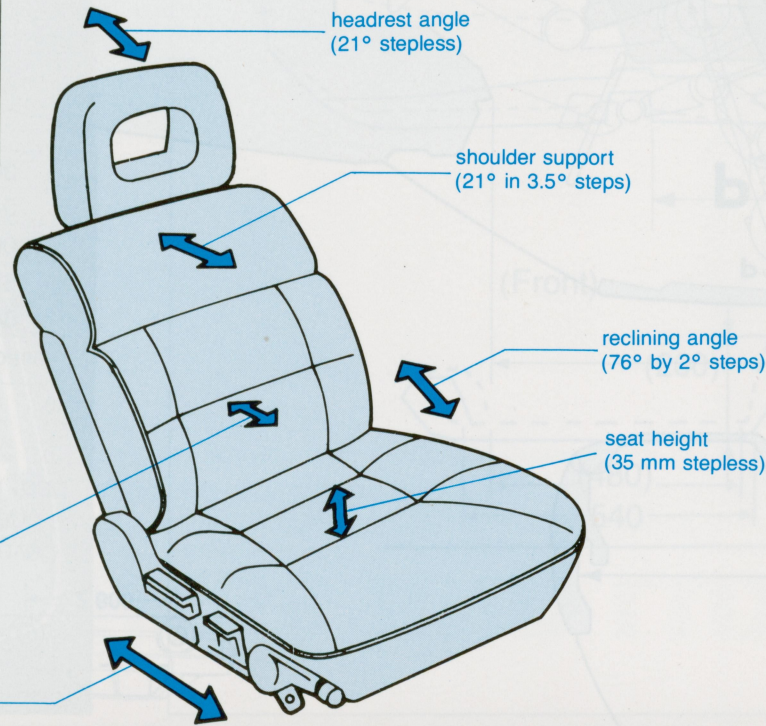
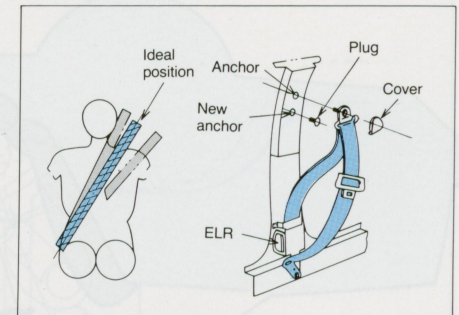
6-way adjustable driver's seat (2000GLS, TURBO)

5-way adjustable driver's seat (other models)

Advanced ergonomics has given the new Galant a new, scientifically designed multi-adjustable seat that's not only much larger than ever before but also offers every driver a fatigue-free driving position. The front headrests are of the see-through type.

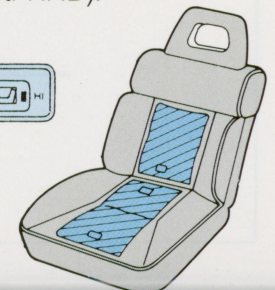
Adjustable seat belt shoulder point (2-step)

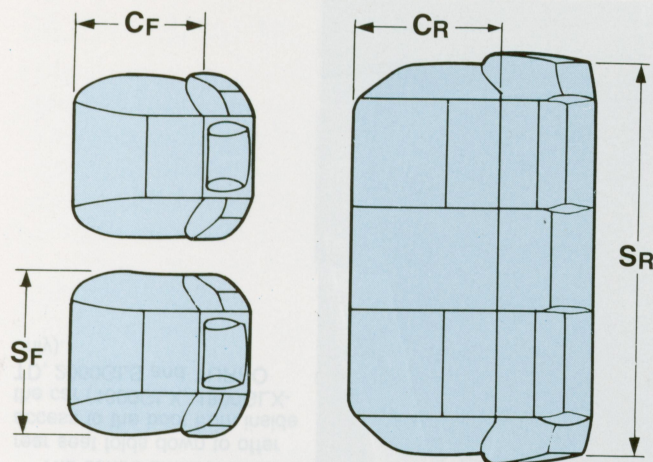
Large- and small-size drivers and front passengers ride in greater comfort and safety thanks to the new 2-step adjustable shoulder strap anchor point. This thoughtful addition is in recognition of the fact that no two people are built exactly the same way.



Heated front seats

A new option on all models is heated driver and front passenger seats (both seat and seat back). A thermostat prevents overheating and the seats' two-step heating elements can be operated separately by conveniently located, illuminated switches on the front console (std. 2000 GLS, TURBO LHD, opt. RHD).





Seat Size Comparison

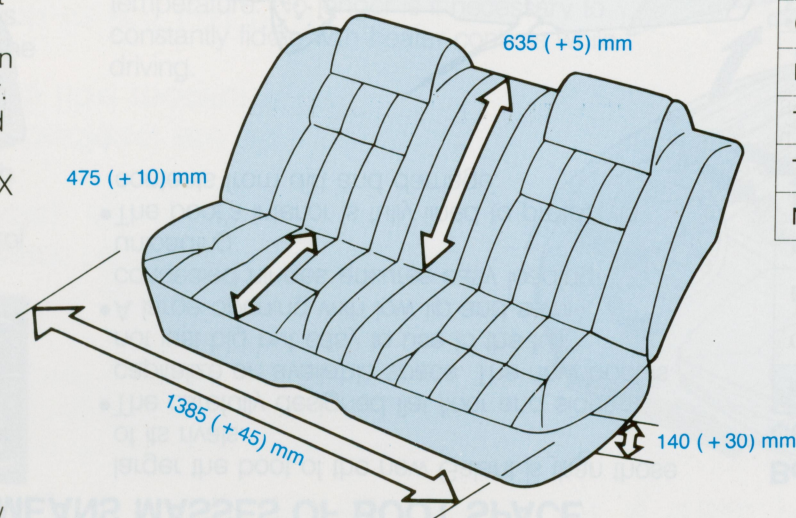
(mm)

Models	Item	CF	SF	CR	SR
NEW MITSUBISHI GALANT		485	530	475	1,385
MITSUBISHI GALANT (Current)		485	510	445	1,335
Nissan Bluebird		490	550	460	1,360
Toyota Corona		480	525	470	1,340
Toyota Camry		480	540	460	—
Mazda 626		480	550	460	1,310
Nissan Laurel		490	540	470	1,375
Toyota Cressida		480	550	475	1,350

REAR SEAT ROOMINESS & COMFORT

- The new, extended wheelbase means that the rear wheel arches no longer protrude into the cabin, allowing a full-width rear seat.
- Seat width is an unrivalled 1385 mm.
- Rear leg space is a full 65 mm greater than in the old Galant, giving passengers that much more room to stretch out and get comfortable.
- The rear sides of the front seat backs are curved to allow extra knee space for rear seat passengers.
- With room in the rear to seat three full adults in comfort, the new Galant is a genuine 5-seater.
- Integral head restraints offer comfortable head support for all passengers.
- Folding armrest offers access to the boot (GLX models and above) and folds flush with the backrest to allow three people to use the rear seat.

centre tunnel, the wider rear seat of the new Galant will comfortably seat three adults, the seats' integral head restraints adding still more to that comfort. And now, access to the boot from within the car is possible through the fold-down arm rest (1600GLX and above).



Rear Seat Comparison

(mm)

Model	Item	Rear seat width	Rear seat depth
New GALANT		1,385	475
GALANT		1,335 (− 50)	465 (− 10)
Bluebird		1,360 (− 25)	460 (− 15)
Corona		1,340 (− 45)	470 (− 5)
Mazda 626		1,310 (− 75)	460 (− 15)
Toyota Camry		—	460 (− 15)
Toyota Cressida		1,350 (− 35)	475 (± 0)
Nissan Laurel (200L)		1,375 (− 10)	470 (− 5)

Wider, deeper rear seats

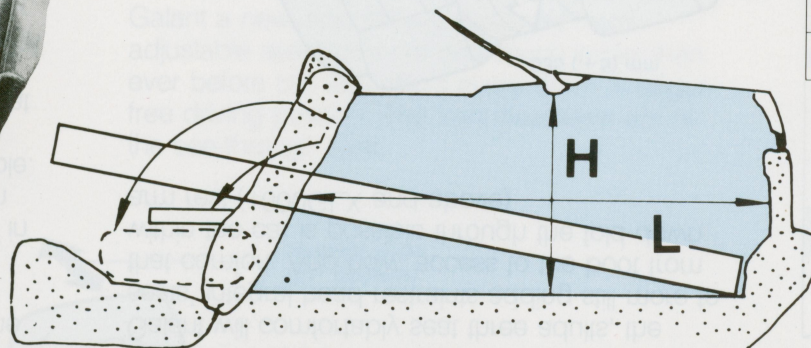
A full 10 mm deeper, 30 mm thicker and, thanks to the wheel-arch-free seat back, a full 50 mm wider, the rear seat of the new Galant takes full advantage of the car's interior spaciousness. Combined with the compact new

THE THICK END OF THE WEDGE MEANS MASSES OF BOOT SPACE

- In addition to superb aerodynamic performance, the new Galant wedge shape has another virtue—a larger-than-ever boot. Nearly half a metre deep and a metre long (495 mm x 940 mm), the new boot has plenty of useable space: 360 litres ISO method; 430 litres VDA method.
- The figures in the table show just how much

larger the boot of the new Galant is than those of its rivals.

- The carefully designed flat floor and sides capitalize on available space. The new boot is not just big but easy to use to the full.
- A large opening with low lip and semi-concealed hinges ensures easy loading/unloading.
- The boot's interior is fully lined to protect its contents from dirt and damage.



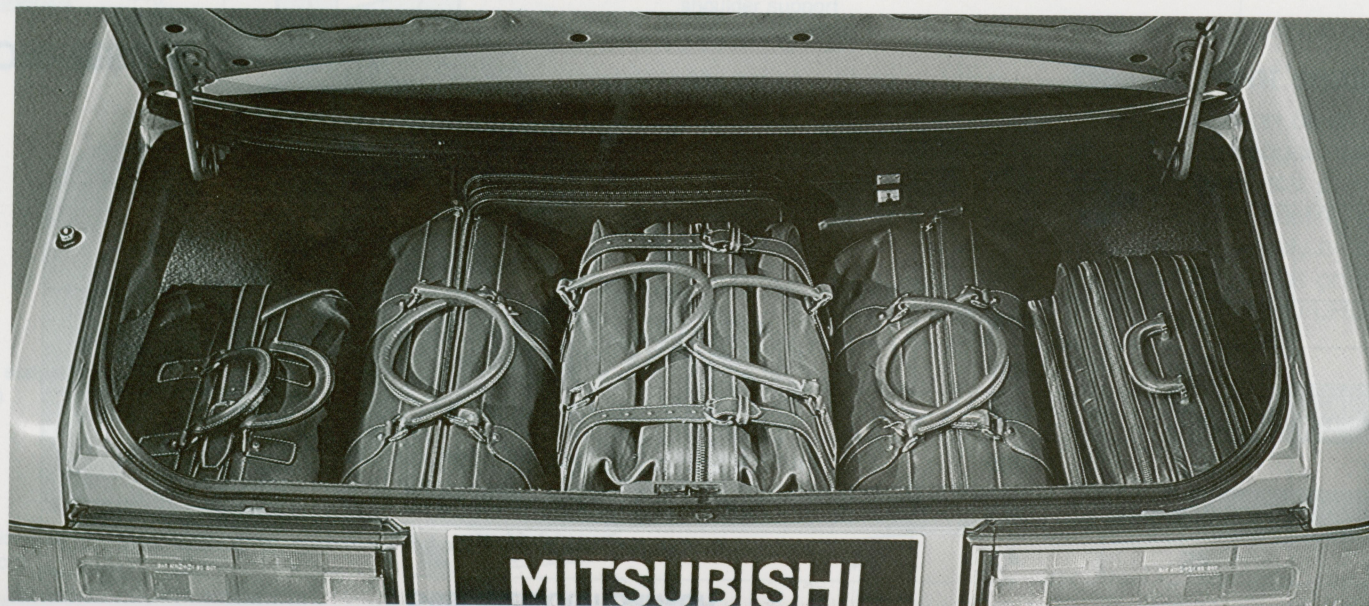
Boot Space Comparison

	Capacity (ℓ)	Height (mm)	Length (mm)
NEW GALANT	360 (430*)	495	940
GALANT	272 (– 88)	405 (– 90)	770 (– 170)
Bluebird	232 (– 128)	—	—
Corona	272 (– 88)	370 (– 125)	860 (– 80)
Mazda 626	368 (+ 8)	495 (± 0)	900 (– 40)
Toyota Camry	312 (– 48)	495 (± 0)	820 (– 120)
Toyota Cressida	320 (– 40)	—	—
Nissan Laurel	336 (– 24)	—	—

*VDA method

Boot access via rear seat

The centre armrest of the rear seat folds down to offer access to the boot from inside the car (1600GLX, 1800GLX-TD, 2000GLS and TURBO only).





Centre Arm Rest Storage Box holds up to 7 cassette tapes, and has a "secret" space for credit cards and documents. (excl. GL)



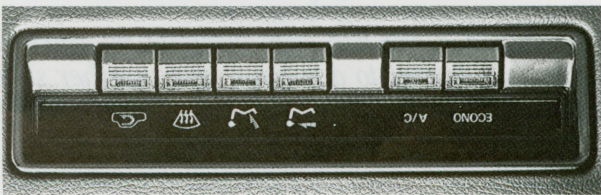
Underseat Tray for convenient storage of loose items, keeping them off the dashboard but within easy reach of the front seat occupants.



Large Door Pockets, big enough to hold several maps and formed of a tough material to keep the contents safe. (excl. GL)

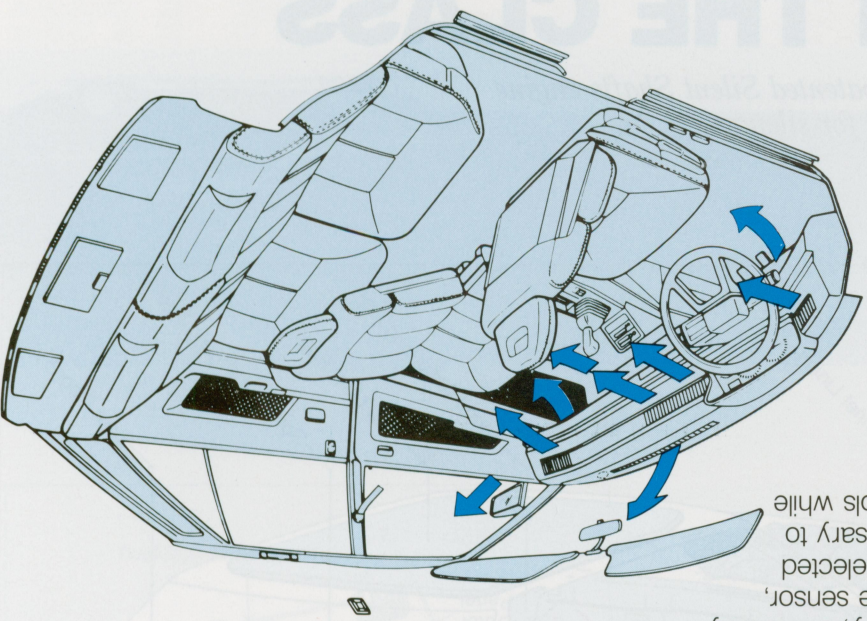
VENTILATION SYSTEM WITH 11 OUTLETS FOR COOLING COMFORT

No less than 11 outlets provide ventilation for passenger comfort. Vents at face/chest level are located in the centre and at each end of the dash. Other vents direct air at the lap, at the feet and the windscreen. Additional vents along the top of the front door trim direct air at the side windows. The forced-ventilation system ensures that the cabin environment is kept clean and fresh. The dual bi-level heater and optional air-conditioning provide total climate control. Distribution controls are located on the dash while temperature and fan speed (multi-speed) controls are located on the Wing Column Control Centre (excl. EL, GL).



AUTO TEMPERATURE CONTROL

Mitsubishi's auto temperature controlled heater (std. 2 litre models) provides fingertip control on the Wing Column Control Centre. This system is a prime example of the new Galant's commitment to convenience, luxury, and safety. Through an automatic temperature sensor, temperature is maintained at the selected temperature. No longer is it necessary to constantly fiddle with heater controls while driving.

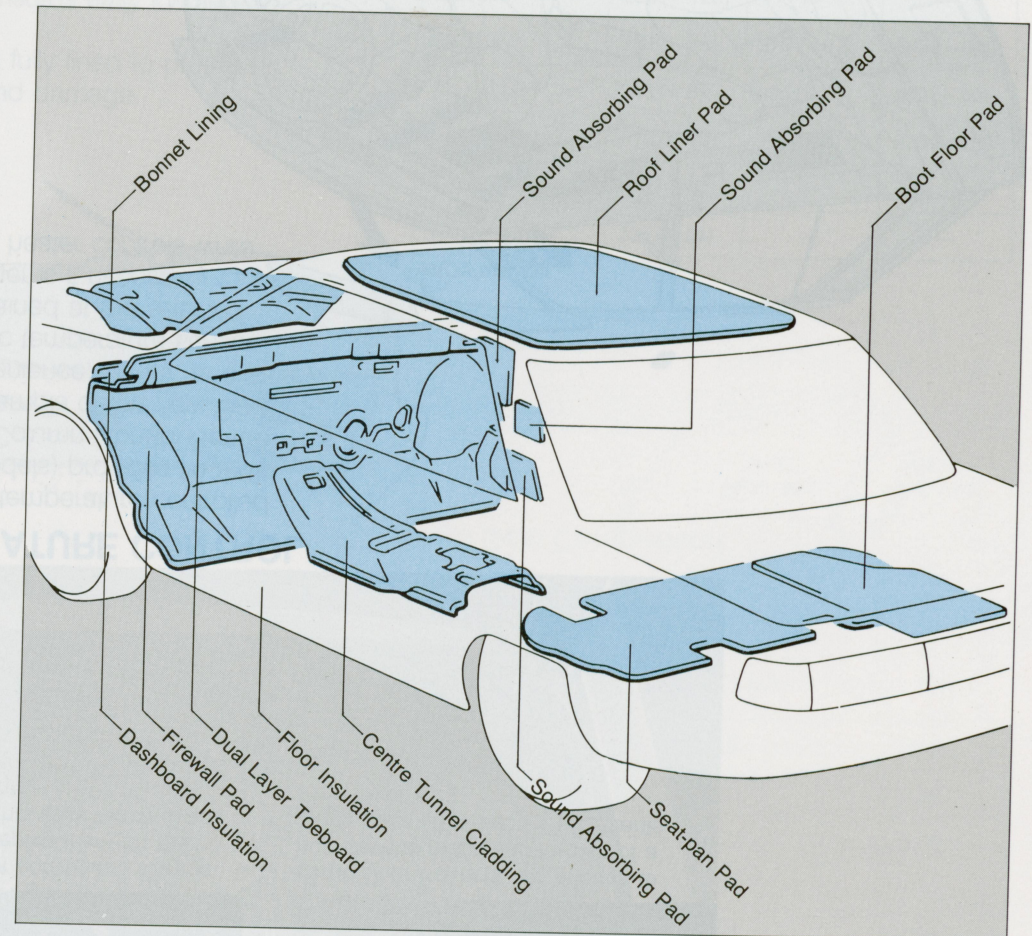
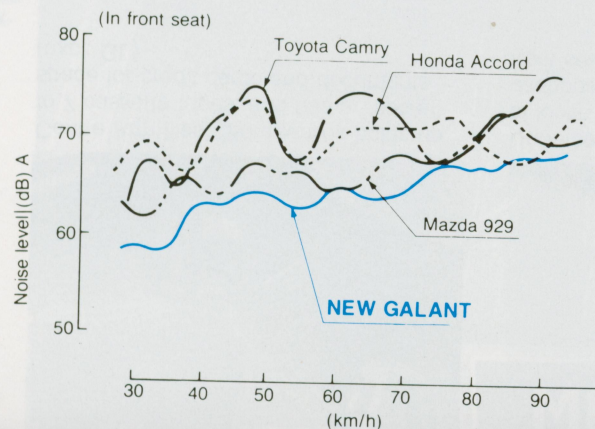


THE QUIETEST RIDE IN THE CLASS

The new Galant has been designed in every way for quietness. From Mitsubishi's patented Silent Shafts engine silencing system to a unique new weather stripping, everything has been engineered for silence. The result is a car with a level of quiet riding enjoyment unsurpassed in its class.

- At a steady 100 km/h the new Galant records a noise reading of just 64 dB (2 litre models), a level of quietness unsurpassed in this class.
- The 1.6 litre petrol and 1.8 litre turbodiesel are also class leaders for quietness. The 1.6 litre measuring a mere 66 dB at 100 km/h.
- Study the accompanying illustration to see just how thoroughly soundproofed the new Galant really is.
- The extensive noise-suppressing measures include patented Silent Shafts, a new suspension layout with rubber bushes and suspension mounts, a dual layer toeboard, dual-weather stripping, and a flexible exhaust joint, to name just a few.

ROAD NOISE (Turtle stone paved road)



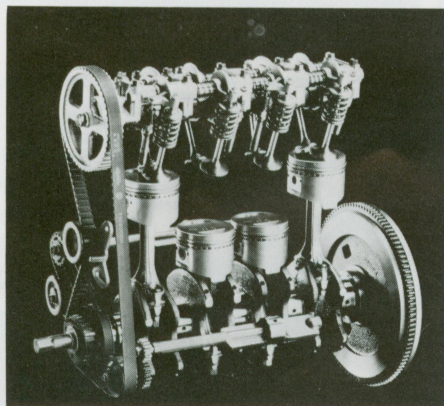
Interior Noise Level Comparison

(Front seat, 2 litre models at 100 km/h)

NEW MITSUBISHI GALANT	MITSUBISHI GALANT	Toyota Camry	Toyota Crown
64dB	67 dB	67 ~ 68 dB	64 ~ 65 dB

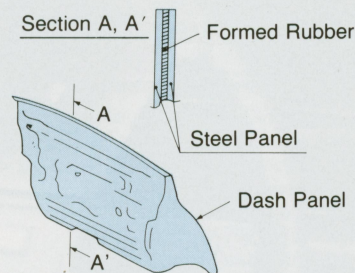
SILENT SHAFTS

- Mitsubishi's unique Silent Shafts system eliminates 4-cylinder engine noise and vibrations for the smoothness level of some V8s. This system is so good even Porsche uses it, under license from Mitsubishi, of course.
- Smoothness means quietness, and Mitsubishi's 4 cylinder engines are as quiet as most 6 and 8 cylinder engines.
- Double insulation engine mountings absorb the rest of the vibrations to make the engine room quieter.



DUAL LAYER TOEBOARD

- A dual layer toeboard shuts out engine noise just like double glazing shuts out noise in houses.
- To ensure that none of the benefits of the dual layer toe-board are lost at through-holes, special care has been taken with grommets and silencing materials to ensure no sound can break through.

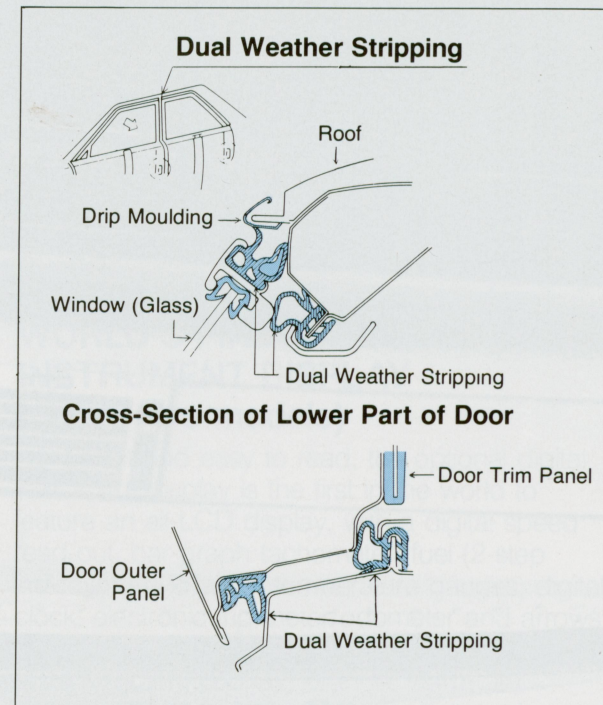


FLEXIBLE EXHAUST JOINT

- A flexible metal hose section is used in the exhaust system between the manifold down pipe and the exhaust pipe to prevent the transmission of engine vibrations to the exhaust system, and hence to the body.
- Rubber mounting of the rest of the exhaust system ensures adequate isolation of any residual exhaust vibration.

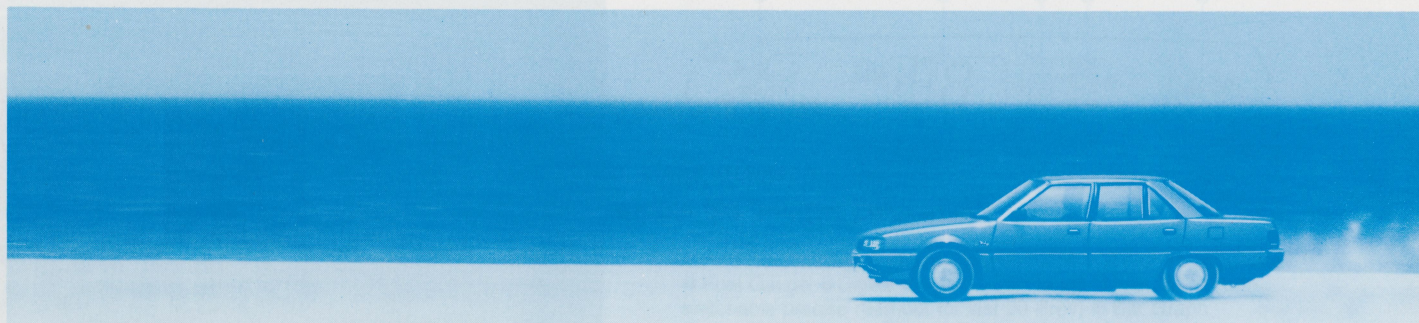
DUAL WEATHER STRIPPING

- Ordinarily, weather stripping is fitted to either the car door or the door frame. In the new Galant, though, weather stripping has been fitted to both, to provide double sealing for extra positive sealing against noise and the weather.



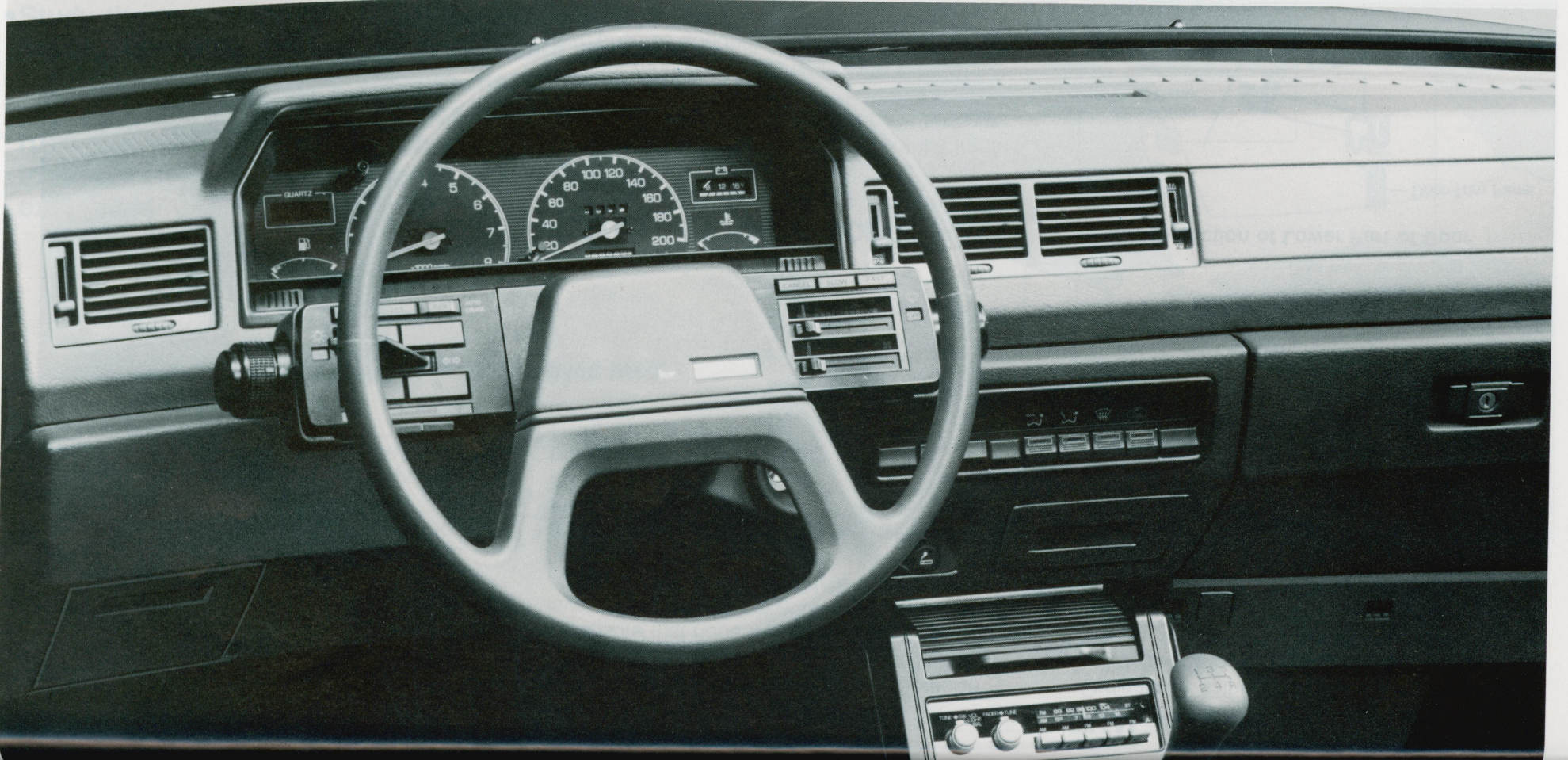
SUPER SUSPENSION

- Double insulation is provided at the front via bushes between the suspension components and a sub-frame, and the sub-frame and the body, with a total of 8 bushes in use.
- Specially designed new 3-link torsional axle type with lateral rod rear suspension provides an excellent ride with optimum isolation of road noise.
- Specially designed bushes ensure excellent isolation of noise and vibration.



THE NEW GALANT'S COCKPIT—FOR THE DISCERNING DRIVER

With the new Galant, Mitsubishi has achieved a most elusive goal: creating a luxurious and comfortable car for the passenger, yet an easy-to-handle road machine for the driver, with all the attributes an automotive connoisseur could desire. Structurally, from the ground up, the new Galant was designed with the cockpit as its core; comfortable, efficient, easy-to-read instruments, major controls at the finger tips: a cockpit for the discerning driver.



WING COLUMN CONTROL CENTRE (GLX and above)

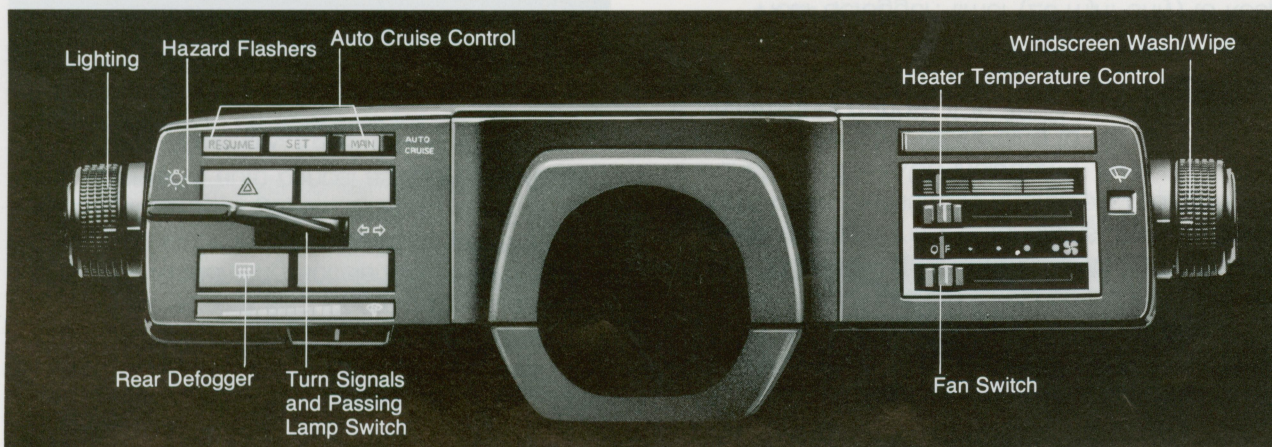
- All switches located for fingertip control.
- Includes all major switching functions and fan speed/temperature switches (excl. EL, GL).
- Allows driver to switch controls without taking hands completely off the steering wheel.
- Large rotary drum lighting (headlamp bright/dim) and wash/wipe switches.

SAFETY

Because the switches are located close to the steering wheel, the driver can operate them without taking either hand off the wheel, for maximum safety.

SPACE SAVING

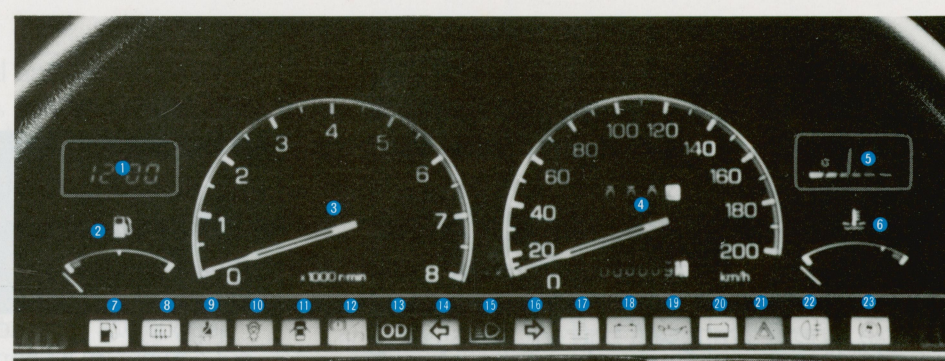
Since the switches are located on the Wing Column Control Centre (GLX and above, control module for other models), the dashboard can be set further back, creating extra knee-room for front passengers, with a greater overall sense of spaciousness.



WING COLUMN CONTROL CENTRE

CONVENIENCE

Since all major switching functions are located on the Wing Column Control Centre (GLX and above, control module for other models) they are right at the driver's fingertips. Switches include lighting and wash/wipe functions, turn signals, heater temperature and fan speed, rear defogger and hazard flashers.

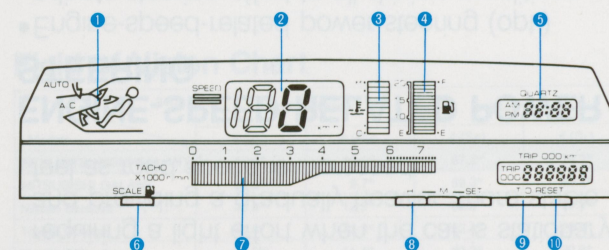


- ① Digital Quartz Clock ② Fuel Gauge
③ Tachometer ④ Speedometer ⑤ Voltmeter
⑥ Water Temperature ⑦ Low Fuel Warning Lamp
⑧ Rear Defogger Indicator Lamp ⑨ Seat Belt Reminder Warning Lamp ⑩ Brake Lamp Failure ⑪ Door Ajar Warning Lamp ⑫ Parking Brake/Brake Fluid Warning Lamp ⑬ Over Drive Warning Lamp (A/T only) ⑭ Left Turn Indicator

- ⑮ High Beam Indicator ⑯ Right Turn Indicator
⑰ Water Temperature Warning Lamp ⑱ Battery Charge Warning Lamp ⑲ Low Oil Pressure Warning Lamp ⑳ Wiper/Washer Water Level Indicator Lamp ㉑ Hazard Flashers ㉒ Rear Fog Lamps ㉓ Anti-Skid Brake Indicator Lamp

WORLD'S FIRST ALL LCD DIGITAL INSTRUMENT DISPLAY (opt. 2 litre models)

Bright and easy to read, the optional digital instrument display is the first in the world to feature an all-LCD display, with a digital speed read-out, bar-graph tachometer, fuel (2-step indication) and water temperature gauges, digital clock, electronic trip-meter/odometer and arrows showing air flow positions for the ventilation system (green, cool air; orange, warm air). Special circuitry ensures that the digital odometer does not cancel or clear, even when the battery is disconnected.

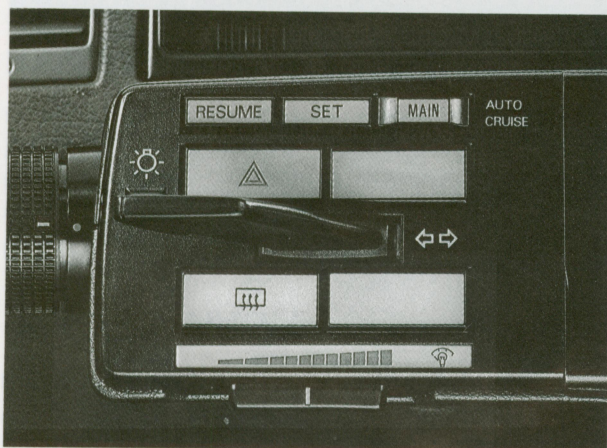


- ① Air Flow Indicator ② Digital Speedometer ③ Water Temperature ④ Fuel Gauge ⑤ Digital Clock ⑥ Fuel Gauge Scale Select (with switchable precise read-out for last 20 litres) ⑦ Bar Graph Tachometer ⑧ Digital Clock Set ⑨ Trip-meter/Odometer Selector ⑩ Trip-meter Reset

CRUISE CONTROL

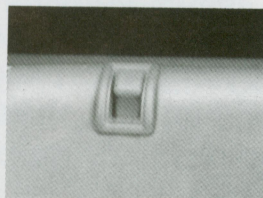
Cruise control (opt., excl. EL, GL) allows the driver to lock the car at a cruising speed for long distance journeys without the need for tiring accelerator control. As well as cancel and set switches, the system also incorporates finger-tip controls for moderating acceleration and deceleration plus resuming previous set speed.

- Speed range setting: 40-140 km/h
- Safe operation; auto cancel as soon as brakes, or clutch or automatic transmission shift is operated



CENTRAL DOOR LOCKING SYSTEM

- Enables all four doors to be locked or unlocked simultaneously with either front door lock button or key (opt., excl. EL, GL).



ETACS (ELECTRONIC TIME AND ALARM CONTROL SYSTEM)

Further attesting to the new Galant's commitment to luxury, convenience and safety is ETACS (Electronic Time and Alarm Control System). Integrated into the control systems of the 2000GLS and the TURBO, this system provides a wide variety of functions, making driving both more pleasurable and safer. The many functions of ETACS include:

Wipers: auto (according to car speed), intermittent (range: 4 to 30 sweeps per min.; normal: 9 sweeps per min. to continuous operation) and combined wipe/wash control.

Rear defogger: timer (20 min. only) to keep the rear window clear.

Room lamps: remain on (20 sec.) upon entering or leaving the car.

Seat belt lamp: lights up (20 sec.) on the binnacle after lifting door handle.

Ignition key reminder: buzzer (20 sec.) reminds the driver on leaving the car that the key is still in the ignition (illuminated for easy nighttime use (20 sec.) to warn driver.

STEREO FM/AM RADIO

- High quality stereo FM/AM radio is standard on all models except GL. In the RHD market, the bands are LW/MW/FM for the 2 litre models.
- Six speakers with fader control and power antenna in the 2 litre models (opt. other models, excl. EL).



EPS (ELECTRONIC CONTROLLED POWER STEERING) SYSTEM

- New from Mitsubishi is EPS (Electronic Controlled Power Steering, opt. 2 litre models). This system ensures outstanding steerability, requiring a light effort when the car is stationary and providing a gradually heavier, more stable feel as road speed is increased.

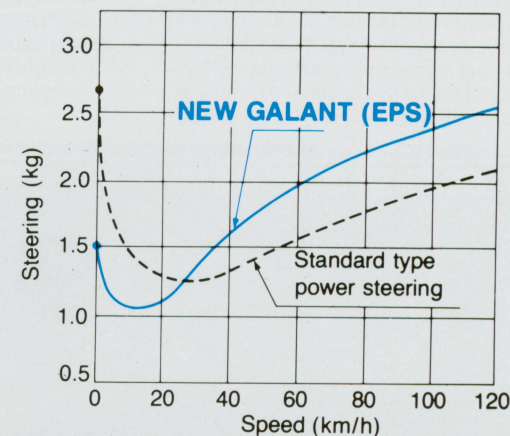
ENGINE-SPEED-RELATED POWER STEERING

- Engine-speed-related power steering (opt.) adjusts steering effort to all driving conditions. Steering effort is lightest when the engine is idling and becomes progressively heavier with increased engine speed.

Steering Effort Comparison

		0	1	2	3 (kg)
Power steering	NEW GALANT	2.7			
	NEW GALANT (EPS)	1.5			
	GALANT	2.8			
	Toyota Camry	3.4			
	Toyota Cressida	3.0			

Electronically-controlled power steering (EPS)



ELECTRONIC ANTI-SKID BRAKE SYSTEM (opt. TURBO only)

In addition to the pressure control valve (PCV) incorporated in the braking systems of all new Galants to prevent early wheel lock-up during hard braking, is an optional Electronic Anti-skid Brake System.

- The system further controls braking, making early wheel lock-up due to panic braking a near impossibility.
- Controls brakes on all four wheels, assuring fast, safe, controlled braking.

ELECTRONIC CONTROL SUSPENSION (ECS) (Opt. 2000GLS only)

A further example of the advanced electronics used in the Galant is ECS, a system which assures optimum ride and better steering ability by a) simultaneously changing the spring constant of the suspension and b) automatically controlling the car's height according to load and speed.

The system comprises sensors for vehicle acceleration (G sensor), speed and height (front and rear) plus a microprocessor (control unit), and an air compressor that pumps air into auxiliary air-spring atop the dampers.

This provides the suspension with automatic levelling ability to compensate for varying vehicle loads.

The damper units contain rotatable shafts that open or close valves inside both the air springs and the dampers to simultaneously raise or lower both the effective spring rate and the damping force, respectively.

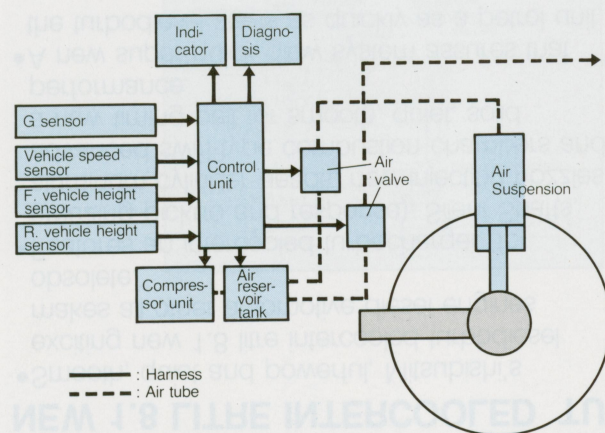
This aspect of the system incorporates two modes or settings, hard and soft, that are selected automatically in response to the rates of acceleration.

For example, the system automatically selects

the hard setting for lateral and longitudinal acceleration — cornering, acceleration or braking with high G-forces, or vertical acceleration — when the car is jolted vertically (greater than 0.5 g) on bumpy roads. The hard setting is also automatically selected at speeds over 120 km/h (74 mph).

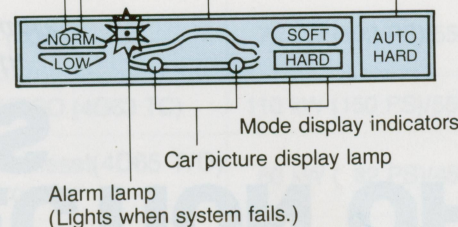
At speeds over 90 km/h (56 mph) the car's effective overall height is lowered 20 mm for greater stability and lower drag.

Output from the control unit is to an indicator on the binnacle where the modes (hard, soft, auto) are displayed while a control sensor monitors the integrity of the system and lights an alarm lamp on the binnacle should the system fail (see illustration).



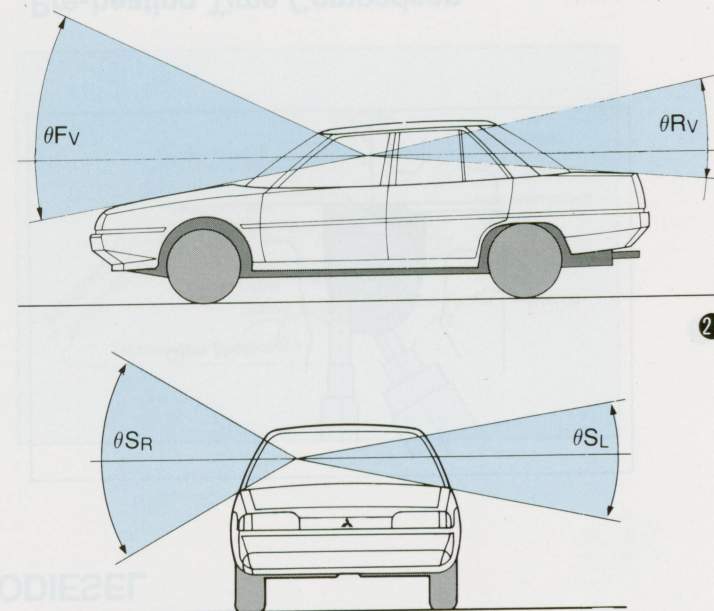
Indicator
(Lights, depending on controlled state of vehicle height.)

Mode select switch
(Produces a beep at changeover.)



IMPROVED FIELD OF VISION

- The improved driving position and increased glass area combine to give the driver a commanding field of view through 305.9° (85%) in the horizontal plane all round, 90.4° in the horizontal plane to the front, 50.1° in the horizontal plane to the rear, and 49.6° in the vertical plane to the front. What's more, the lower waist line and raised roof ensure excellent side vision and the slim pillars don't interfere with vision.



Field of Vision Chart

Models	Longitudinal View		Latitudinal View	
	θ (Fv)	θ (Rv)	θ (Sr)	θ (Sl)
NEW MITSUBISHI GALANT	49.6°	12.2°	67.2°	20.2°
MITSUBISHI GALANT	38.3°	9.7°	59.3°	20.2°
Nissan Bluebird	48.6°	12.2°	62.9°	19.9°
Toyota Corona	46.6°	11.3°	62.4°	20.8°
Mazda 626	43.3°	11.4°	60.2°	20.8°
Toyota Camry	48.2°	12.5°	57.5°	19.6°
Toyota Cressida	45.5°	11.0°	60.4°	19.4°

A SUPERB SELECTION OF ENGINES AND TRANSMISSIONS

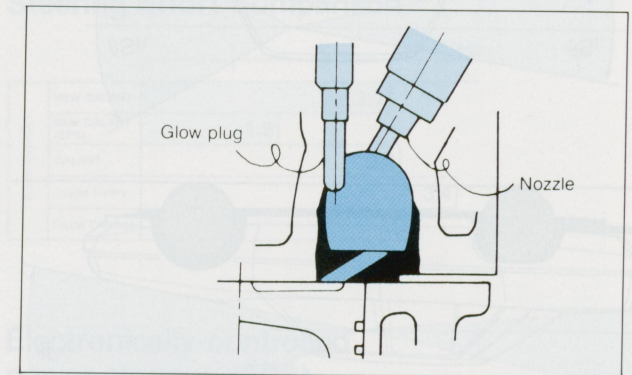
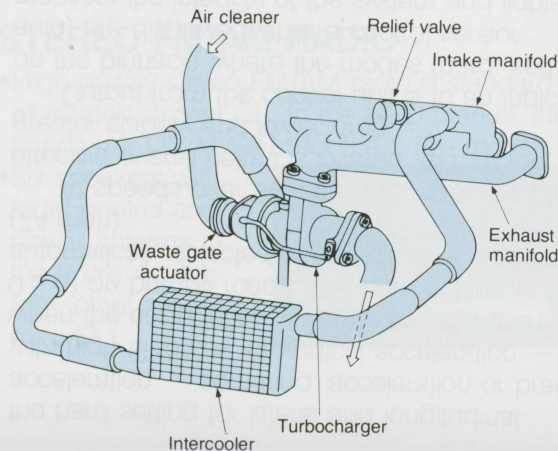
The Galant has always been a performance leader, but with the new Galant its leadership commands not only performance but also economy and both have been raised to new highs. The new line-up means greater versatility for a bigger market.

- **Exciting new 1.8 litre turbodiesel engine added to proven 1.6 litre and 2 litre normally aspirated petrol models plus the popular 2 litre ECI-TURBO offer drivers a wide engine lineup. All engines feature Silent Shafts for V8-like smoothness.**

NEW 1.8 LITRE INTERCOOLED TURBODIESEL

- Smooth, quiet and powerful, Mitsubishi's exciting new 1.8 litre intercooled turbodiesel makes all other automotive diesel engines obsolete.
- Features an intercooled turbocharger (for amazing pickup and response), Silent Shafts, aluminum cylinder heads, new injection nozzles, advanced swirl-type combustion chambers and a new timing belt for smooth, quiet, solid performance.
- A new super-quick glow system assures that the turbodiesel starts as quickly as a petrol unit.

Air-intake System of New 1.8 litre Turbodiesel Engine



Pre-heating Time Comparison

(sec.)

Water Temp.	-20°C	0°C	20°C
System			
Super-quick Glow	0	0	0
Quick Glow	3	1.5	0.5
Conventional Glow	22	12	6

1.6 LITRE AND 2 LITRE PETROL ENGINES

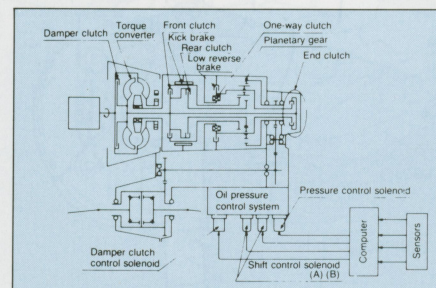
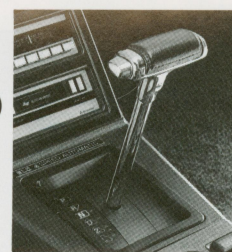
- Proven stalwarts of the Mitsubishi engine line-up: tough, dependable engines.
- The 1.6 litre engine epitomizes the Mitsubishi tradition of value for money.
- A reputed performer, the 2 litre petrol engine is legendary in its refinement and power.
- Both engines, thanks to Silent Shafts and Mitsubishi's sophisticated technology, provide V8-like levels of smoothness.

2 LITRE ECI-TURBO ENGINE

- Fast and responsive, the 2 litre ECI-TURBO engine is a popular and highly acclaimed powerplant.
- In accordance with Mitsubishi's turbophilosophy, it offers new Galant drivers the best of both worlds—exhilarating performance and reasonable fuel consumption.
- Built around Mitsubishi's standard 2 litre engine, the ECI-TURBO benefits from the same reputation for toughness and reliability.

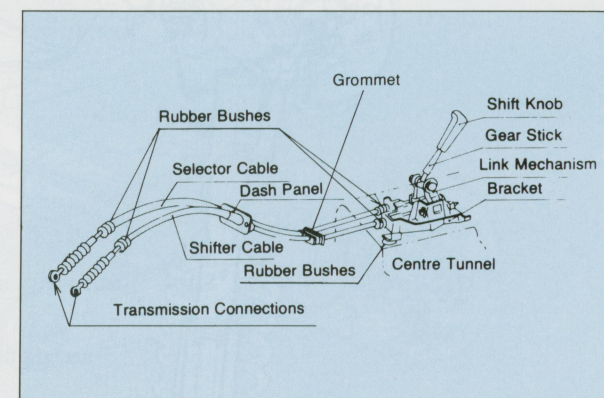
ELC AUTOMATIC TRANSMISSION

- The ELC (Electronic Control) transmission, unique to Mitsubishi, is a 4-speed automatic featuring a specially designed microcomputer controlled damper clutch in the torque converter to progressively eliminate torque converter slip from as low as 17 km/h. Slip is reduced to as little as 1% at normal running speeds, which is as close as possible to being a direct power transmission. The obvious benefits of ELC are the on-the-move performance and economy of a manual with the convenience of an automatic.



SMOOTH, EASY SHIFTING MANUAL TRANSMISSIONS

- In spite of the switch to a transverse front-wheel-drive drivetrain, 5-speed performance and smooth, precise shift feel has been preserved by the use of a positive-acting push-pull twin cable shift linkage. This linkage also helps keep engine noise and vibration out of the cabin.



THE NEW GALANT ENGINE LINE-UP

Engine Size & Type	Max. Output	Max. Torque	Available Transmission
1.6ℓ Petrol (4G32)	55 kW (75 PS)/5500 rpm	122 N-m (12.4 kg-m)/3500 rpm	5-speed manual
2ℓ Petrol (4G63)	75 kW (102 PS)/5500 rpm	160 N-m (16.3 kg-m)/3500 rpm	5-speed manual 4-speed automatic
2ℓ ECI-TURBO (4G63 TC)	110 kW (150 PS)/5500 rpm	245 N-m (25.0 kg-m)/3500 rpm	5-speed manual
1.8ℓ Turbodiesel(4D65 T/D) with intercooler	60 kW (82 PS)/4500 rpm	165 N-m (16.8 kg-m)/2250 rpm	5-speed manual

THE SUPER BALANCE SUSPENSION

With the shift to front-wheel-drive, the suspension of the new Galant was designed virtually from scratch to achieve an uncompromising balance of the highest standards of riding comfort, handling and safety. The results of this effort are shown in the naming of this new suspension geometry: Super Balance says it all.

FRONT SUSPENSION

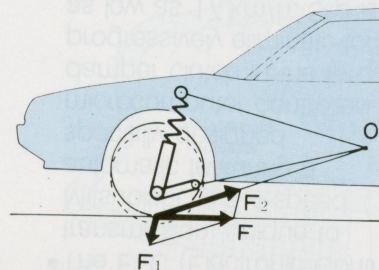
- MacPherson struts with lower A-arm location and an anti-roll bar.
- Sub-frame suspension mounting and rubber bushings at eight locations for isolation of road noise.
- Precise rack and pinion steering.
- Ventilated front disc brakes.

DOUBLE INSULATION

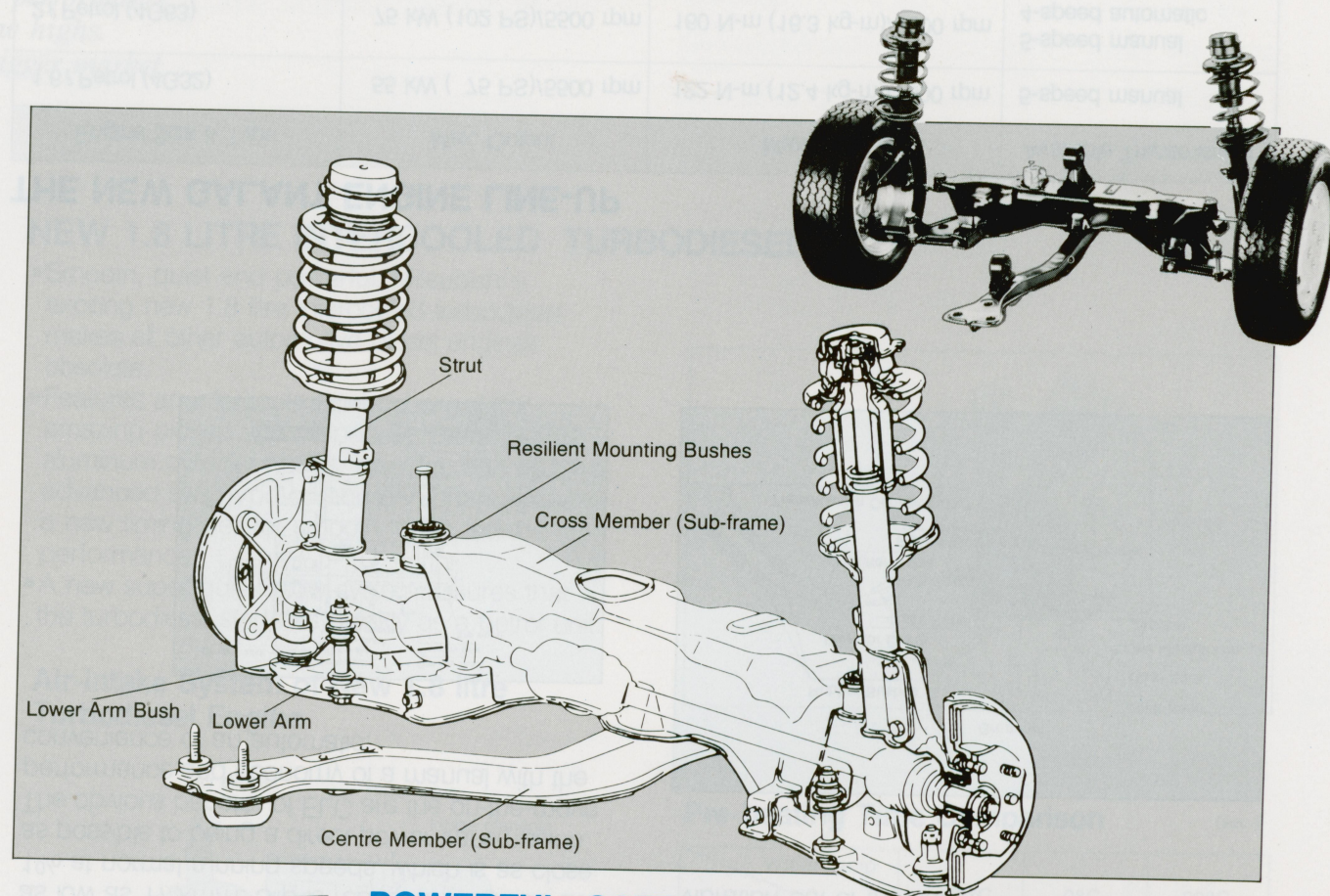
- The front suspension is mounted on a separate sub-frame to ensure maximum isolation of road noise from the body. Counting the suspension bushes and the bushes mounting the sub-frame to the body, there are no fewer than 8 rubber bushes soaking up the vibrations.
- Since the steering rack and suspension lower arms are mounted to the sub-frame, their locating bushes do not have to be as resilient as in designs which are mounted directly to the body. Thus suspension and steering control is more precise, for better handling.

ANTI-NOSE DIVE GEOMETRY

- Special geometry in the front suspension helps to prevent nose dive during heavy braking, for greater safety and passenger comfort.
- The longitudinal axis of the lower arm is inclined upwards to the rear to geometrically split the braking force (F) into two components (F_1 and F_2). F_1 acts to extend the suspension, counteracting the forces of compression that cause nose dive.

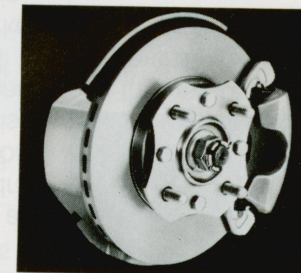


O: Theoretical axis about which the front suspension moves



POWERFUL, SAFE BRAKING

- Powerful ventilated disc brakes are used at the front for dependable, fade-free stopping.
- Stopping is effortless with a large (8-in. or 9-in. dia.) vacuum booster.
- Diagonally split dual circuit brakes for safe stopping on all surfaces even in the event of the failure of one circuit.
- Incorporated in the braking system is a pressure control valve (PCV) to prevent early wheel lock-up during hard braking.

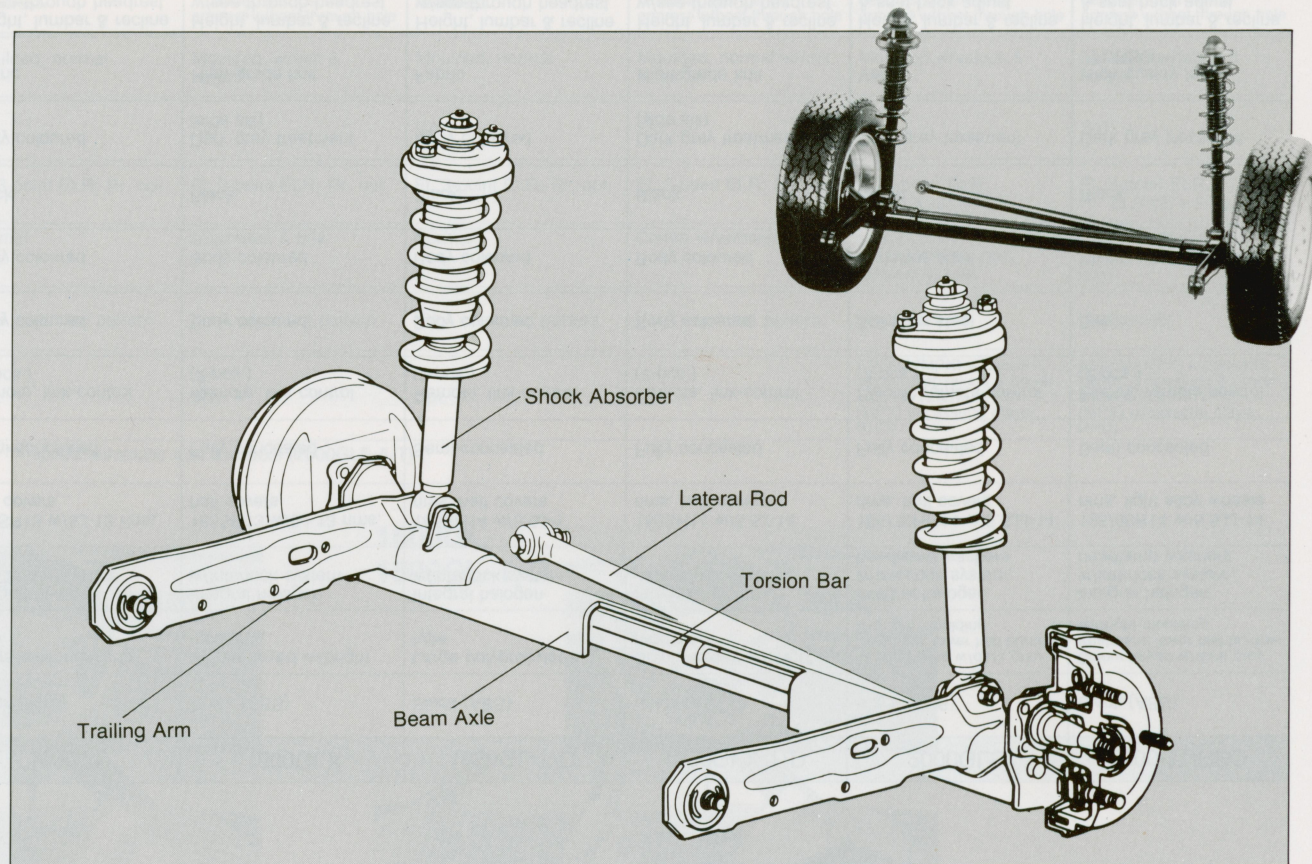
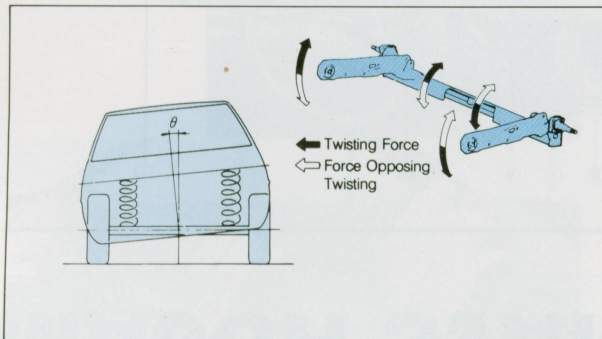


REAR SUSPENSION

- Torsional beam axle with trailing arm and lateral rod location 3-link rear plus torsional bar suspension.
- Combines the surefootedness of an independent system with the riding comfort of a rigid design.
- All new zero camber compound suspension design.
- Special rubber bushes for compliance and control.

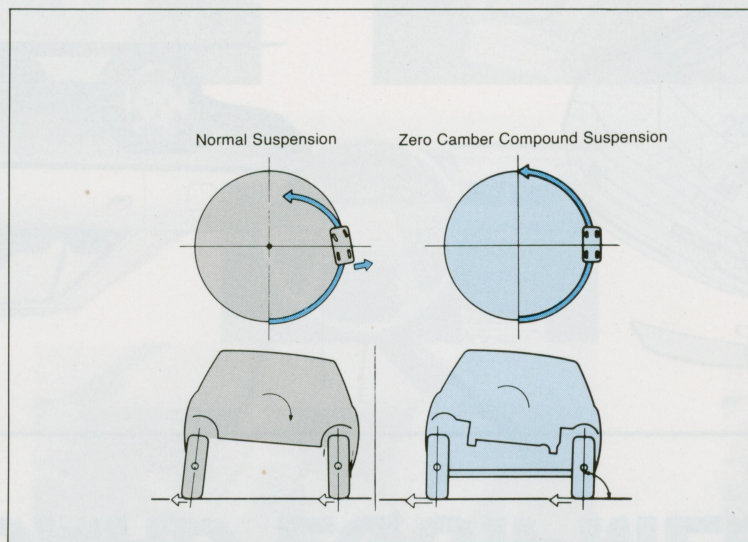
THREE-LINK TORSIONAL BEAM AXLE

- Advanced new suspension design that combines the merits of independent suspension and live suspension for superb handling and a great ride.
- Three-link location with two trailing arms and a lateral rod.
- U-shaped cross-section torsional beam axle with internally housed torsion bar permits some twisting for wheel control, but also generates a force that resists the twisting to restore the wheels to their normal positions.
- Reduces suspension harshness for a superior ride.
- Suspension geometry prevents oversteer and excessive tuck-in during hard cornering.

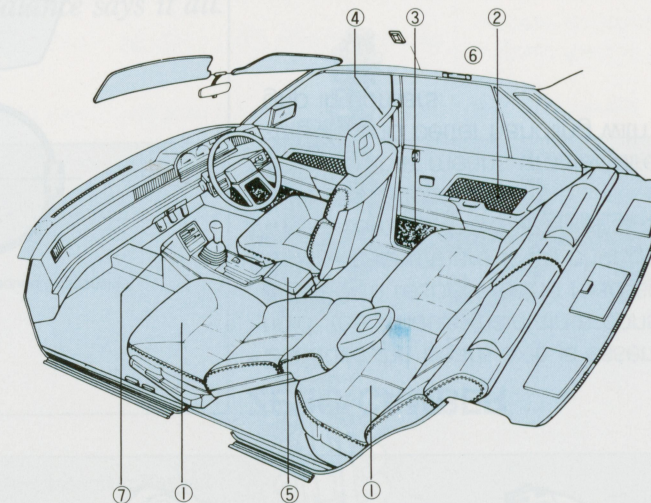
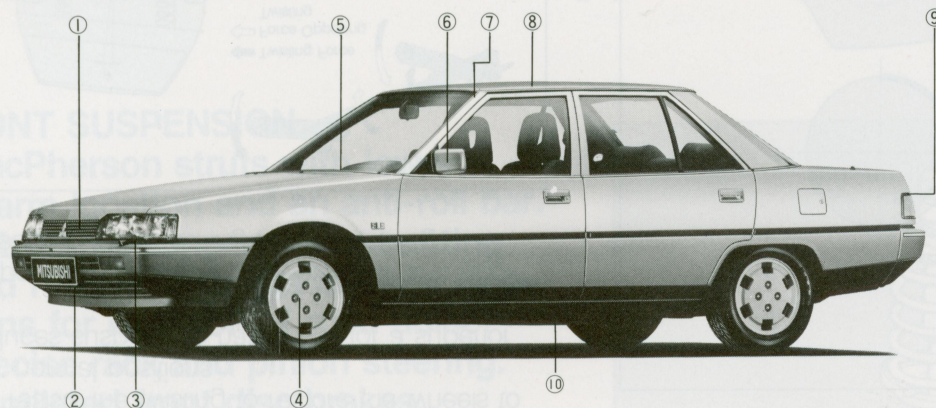


ZERO CAMBER

- Because the beam axle is essentially rigid, the wheels maintain a constant angle with respect to the road surface, which means there is no change in wheel camber, no matter what angle the body adopts.
- Zero camber means greater directional stability and better handling with superior grip in corners.



MAJOR STANDARD EQUIPMENT



		1600EL	1600GL	1600GLX	1800GL-T/D	1800GLX-T/D	2000GLS *	2000 TURBO
Exterior	1) Grille	Black (ABS)	Black (ABS)	Black (ABS)	Black (ABS)	Black (ABS)	Black (ABS)	Black (ABS)
	2) Bumper	Large polypropylene type	Large polypropylene type	Colour-keyed w/bright moulding	Large polypropylene type	Colour-keyed w/bright moulding	Colour-keyed w/dark grey treatment, lower half bumper w/bright moulding	Colour-keyed w/dark grey treatment, lower half bumper w/bright moulding
	3) Headlamps	Integral halogen	Integral halogen w/interlock system	Integral halogen w/interlock system	Integral halogen w/interlock system	Integral halogen w/interlock system	Integral halogen w/interlock system, headlamp washers	Integral halogen w/interlock system, headlamp washers
	4) Wheels	165SR13 w/5J-13 rims, half covers	165SR13 w/5J-13 rims, half covers	165SR13 w/5J-13 rims, half covers	165SR14 w/5.5J-1 rims, half covers	165SR14 w/5.5J-14 rims, half covers	185/70HR14 w/5.5JJ-14 rims, half covers	195/60R14 w/5.5JJ-14 rims, light alloy wheels
	5) Wipers	Semi-concealed	Semi-concealed	Fully concealed	Semi-concealed	Fully concealed	Fully concealed	Semi-concealed
	6) Door mirrors	Remote, link-control (driver's side)	Remote, link-control (2-pcs.)	Remote, link-control (2-pcs.)	Remote, link-control (2-pcs.)	Remote, link-control (2-pcs.)	Electric remote control (2-pcs.)	Electric remote control (2-pcs.)
	7) Front pillar garnish	Body coloured	Body coloured	Body coloured	Body coloured	Body coloured	Stainless steel	Black
	8) Door frame finish	Body coloured	Body coloured	Body coloured	Body coloured	Body coloured	Stainless steel	Black
	9) Rear lamp moulding	Black	Black	Black	Black	Black	Bright	Black
	10) Lower body	Body coloured	Body coloured	Dark grey treatment (side sill)	Body coloured	Dark grey treatment (side sill)	Dark grey treatment	Dark grey treatment
Interior	1) Seats	Partial fabric	Fabric	High grade knit	Fabric	High grade knit	Velour	High quality fabric "TURBO"
	Front	Height, lumbar & recline w/see-through headrest	Height, lumbar & recline w/see-through headrest	Height, lumbar & recline w/see-through headrest	Height, lumbar & recline	Height, lumbar & recline	Height, lumbar & recline	Height, lumbar & recline

Rear	Normal	High-back w/integral headrest	High-back w/leg headrest, rear centre armrest w/boot-through hole	High-back w/integral headrest	High-back w/leg headrest, rear centre armrest w/boot-through hole	headrest, rear centre armrest w/boot-through hole	headrest, rear centre armrest w/boot-through hole
2) Door trims	Moulded, normal	Moulded, normal	Moulded, w/knit & carpet	Moulded, normal	Moulded, normal w/knit & carpet	Moulded w/velour & carpet	Moulded w/fabric & carpet
3) Door pockets	NA	NA	Std.	NA	Std.	Std.	Std.
4) Seat belts	Ft. 3-point ELR; Rr. opt.	Ft. 3-point ELR; Rr. opt.	Ft. 3-point ELR; Rr. opt.	Ft. 3-point ELR; Rr. opt.	Ft. 3-point ELR; Rr. opt.	Ft. 3-point ELR; Rr. ELR (2) + 1 lap	Ft. 3-point ELR; Rr. ELR (2) + 1 lap
5) Floor console	Normal	Normal	w/armrest & box	Normal	Centre w/armrest & box	Large centre console w/tray, sliding door, armrest & box	Large, centre w/tray, sliding door armrest & box
6) Head lining	Fabric-like	Vinyl w/printed pattern	Vinyl w/printed pattern	Vinyl w/printed pattern	Vinyl w/printed pattern	High grade	High grade
7) Radio	Opt.	Opt.	Opt.	Opt.	Opt.	AM/FM (MPX) w/cassette player, 6 speakers & power antenna (LW/MW/FM (MPX) w/cassette player, RHD)	AM/FM (MPX) w/cassette player, 6 speakers & power antenna (LW/MW/FM (MPX) w/cassette player, RHD)

Note: Std.: Standard Opt.: Optional NA: Not available *4-speed automatic also available (2000GLS-A/T)

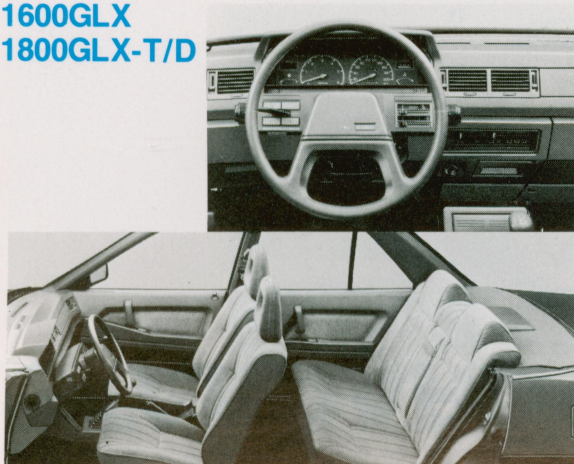
1600EL



**1600GL
1800GL-T/D**



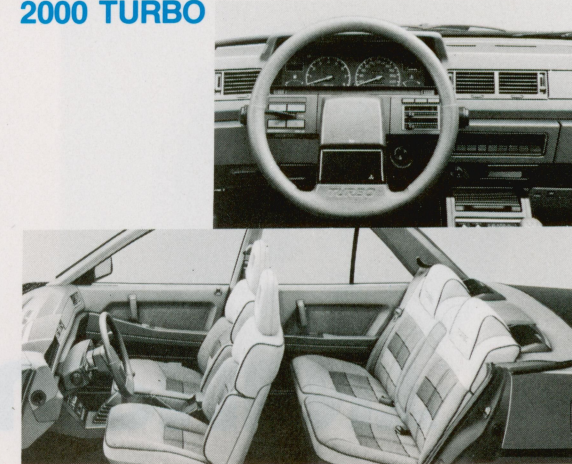
**1600GLX
1800GLX-T/D**



2000GLS



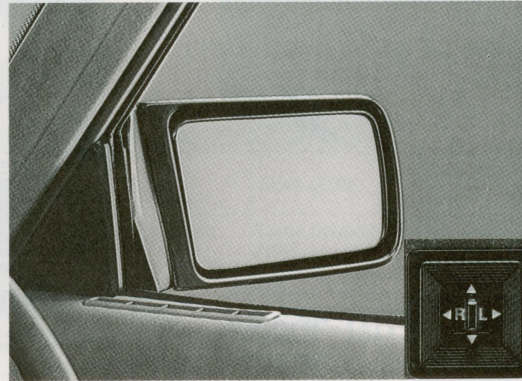
2000 TURBO



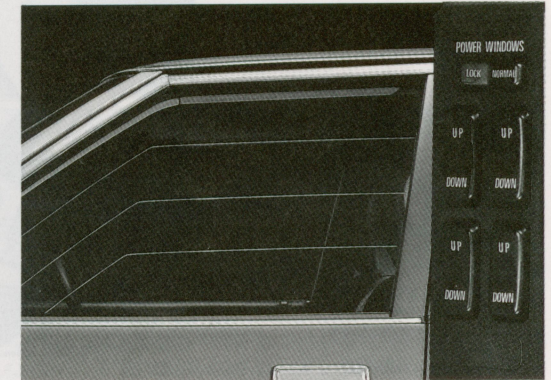
STANDARD & OPTIONAL EQUIPMENT



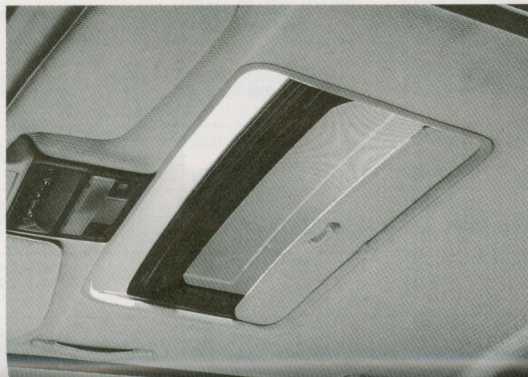
Headlamp washers



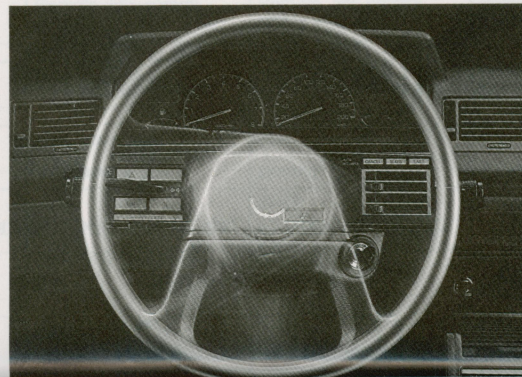
Remote control door mirrors



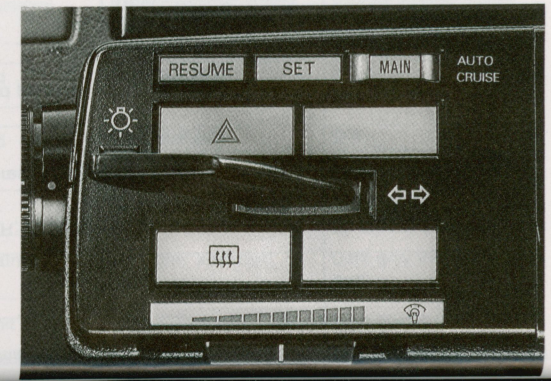
Power windows

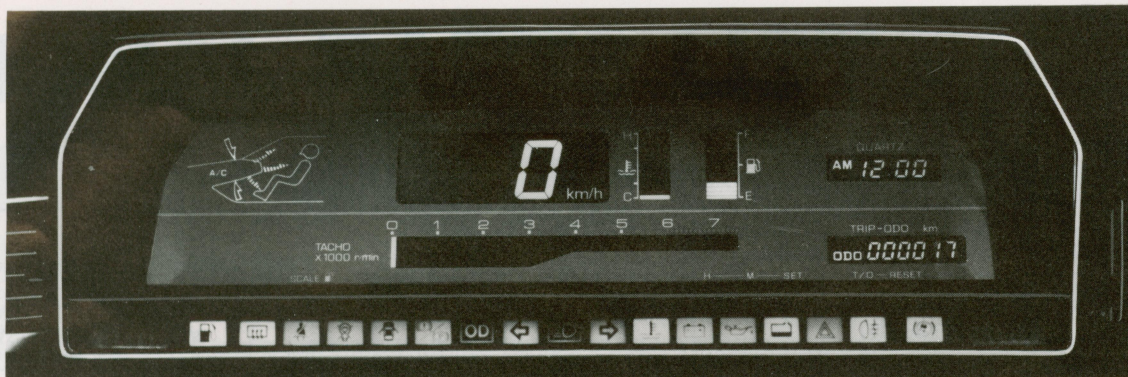


Electrically operated glass sunroof

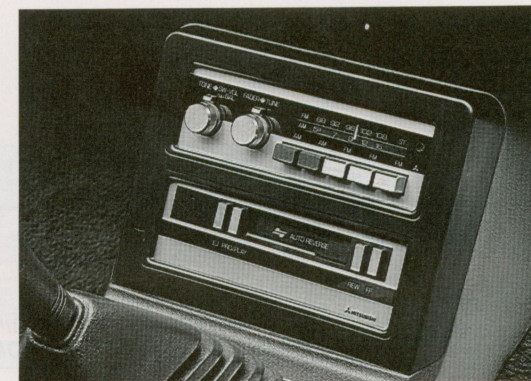


Power steering

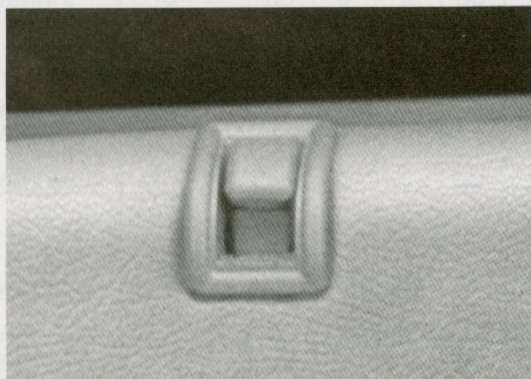




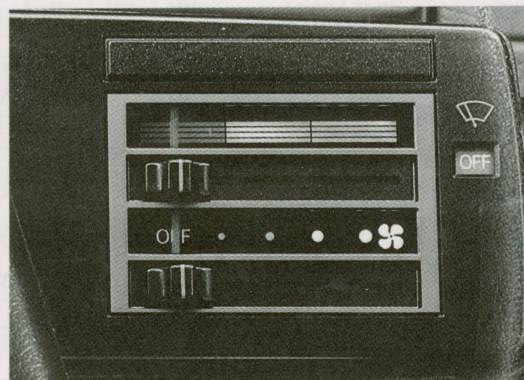
All LCD digital instrument display



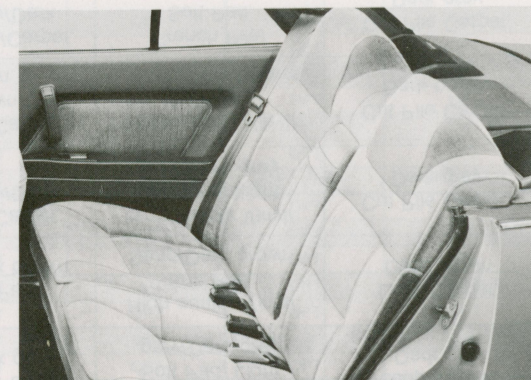
High grade cassette tape player & AM/FM radio/w power antenna



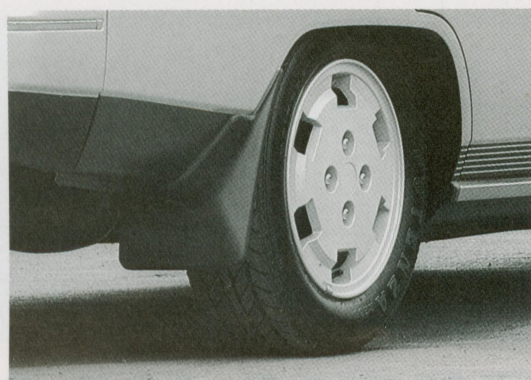
Central door locking system



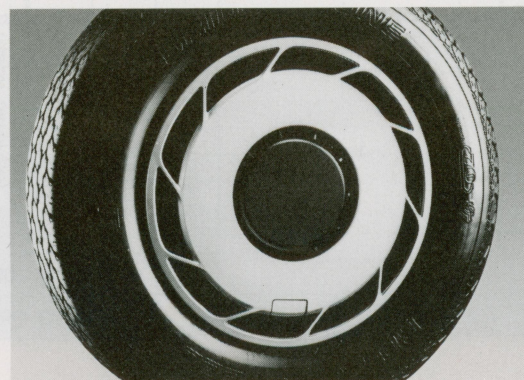
Air-conditioner



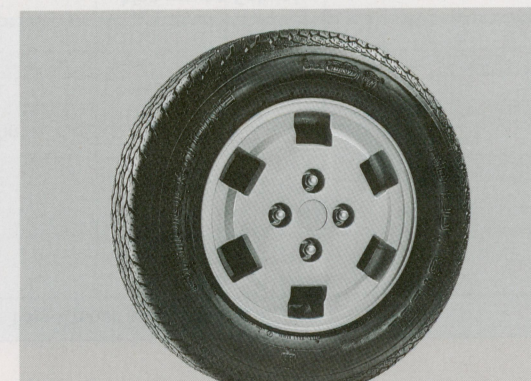
Unibelt (ELR) rear seat belts



Mud guards



Full wheel covers



195/60R14 85H tyres & aluminium wheels

COLOUR CHART

Exterior and Interior Trim Colour Model and Model Code		Interior Trim Code (Basic Colour)	Exterior Colour and Colour Code									Interior Trim Colour and Materials			
			W18	R52	B91	G81	H43	H39	R49	S28	C14	Seat	Door & Side Trim	Head Lining & Instrument Panel	Floor Covering
			Sarajevo White	California Red	Rhône Blue (M)	Lawrence Green (M)	Eiger Silver (M)	Kaizer Silver (M)	Provence Red (M)	Château Beige (M)	Captino Brown (M)				
1600EL	E11ASNDL6	17A (Grey)	X	X	X	X	X	X	X	X	X	Fabric & Vinyl, Grey	Vinyl w/Pad, Grey/Dark grey	Non woven Fabric/ Soft Pad, Light grey/Dark grey	Needle Punch, Dark grey
1600GL 1800GL-T/D	E11ASNJL6 E11ASNJR6	18A (Grey)	NA	X	X	NA	X	X	X	NA	NA	Fabric, Grey	Vinyl w/Pad, Grey/Dark grey	High quality Vinyl/ Soft Pad, Light grey/Dark grey	Loop Carpet, Dark grey
	E14ASNJFL6	35F (Brown)	X	NA	NA	X	NA	NA	NA	X	X	Fabric, Brown	Vinyl w/Pad, Brown/Dark brown	High quality Vinyl/ Soft Pad, Sand/Dark brown	Loop Carpet, Dark brown
1600GLX 1800GLX-T/D	E11ASNUL6	19A (Grey)	NA	X	X	NA	X	X	X	NA	NA	High grade knit, Grey	Vinyl/knit/Carpet, Grey/Grey/Dark grey	High quality Vinyl/ Soft Pad, Light grey/Dark grey	Cut Pile Carpet, Dark grey
	E14ASNUFL6 E14ASNUFR6	36F (Brown)	X	NA	NA	X	NA	NA	NA	X	X	High grade knit, Brown	Vinyl/knit/Carpet, Brown/Brown/Dark brown	High quality Vinyl/ Soft Pad, Sand/Dark brown	Cut Pile Carpet, Dark brown
2000GLS 2000GLS-A/T	E15ASNHL6 E15ASNHR6 E15ASRHL6 E15ASRHR6	24A (Grey)	NA	X	X	NA	X	X	X	NA	NA	Velour, Grey	Vinyl/Velour/Carpet, Grey/Grey/Dark grey	French Pile/ Soft Pad, Grey/Dark grey	Cut Pile Carpet, Dark grey
		39F (Brown)	X	NA	NA	X	NA	NA	NA	X	X	Velour, Brown	Vinyl/Velour/Carpet, Brown/Brown/Dark brown	French Pile/ Soft Pad, Sand/Dark brown	Cut Pile Carpet, Dark brown
2000 Turbo	E15ASNGTL6 E15ASNGTR6	26A (Grey)	X	X	X	X	X	X	X	X	X	High grade fabric, Grey	Vinyl/Fabric/Carpet, Grey/Grey/Dark grey	French Pile/ Soft Pad, Grey/Dark grey	Cut Pile Carpet, Dark grey

X = Available NA = Not available (M) = Metallic Colour

OPTIONAL PARTS LIST

ITEMS	MODELS	OPT CODE	1600EL (E11ASNDL6)	1600GL (E11ASNJL6/R6)	1600GLX (E11ASNUL6)	1800GL-T/D (E14ASNJFL6)	1800GLX-T/D (E14ASNUFL6/R6)	2000GLS* E15ASNHL6/R6 E15ASRHL6/R6	2000 TURBO (E15ASNGTL6/R6)
Cold-zone kit		@01	OPT	OPT (LHD)	OPT	OPT	OPT (LHD)	OPT (LHD)	OPT (LHD)
ECS (Electronic Controlled Suspension)		A43	—	—	—	—	—	OPT	—
Wheels and tyres:									
4.5J-13		B77	OPT	—	—	—	—	—	—
5.5J-13 (light alloy wheels) & large tyres		B41	—	OPT	OPT	—	—	—	—
5.5JJ-14 (light alloy wheels) & large tyres		B44	—	—	—	OPT	OPT	OPT	—
185/70SR13		B26	—	OPT	OPT	—	—	—	—
185/70HR14		B26	—	—	—	OPT	OPT	○	—
195/60R14 & light alloy wheels		B78	—	—	—	—	—	OPT	○
Full wheel cover		B05	—	—	—	OPT	OPT	OPT	—
Electronic Anti-skid Brake System (4-wheel)		C15	—	—	—	—	—	—	OPT
Auto cruise control		D42	—	—	OPT	—	OPT	OPT	OPT
EPS (Electronic Controlled Power Steering, car speed related)		F14	—	—	—	—	—	OPT	OPT
Power steering (engine speed related)		F15	OPT	OPT	OPT	OPT	OPT	OPT	OPT
Liquid crystal digital display meter		H01	—	—	—	—	—	OPT	OPT
Rear seat belts, Uni (ELR) x 2 + lap x 1		K07	OPT	OPT	OPT	OPT	OPT	○	○
Heated front seats		K31	OPT	OPT	OPT	OPT	OPT	OPT	OPT
Seat belt-less (RHD only)		K99	—	—	—	—	—	OPT (RHD)	OPT (RHD)
Power windows		N20	—	OPT	OPT	OPT	OPT	OPT	OPT
Bronze glass		N32, 33, 34	OPT	OPT	OPT	OPT	OPT	OPT	OPT
Electric sliding sunroof (glass)		N22	—	OPT	OPT	OPT	OPT	OPT	OPT
Splash guards for engine & transmission		P42	OPT	OPT	OPT	OPT	OPT	OPT	OPT
Mud guard (4 pcs.)		P44	OPT	OPT	OPT	OPT	OPT	OPT	OPT
Electric remote control door mirror mirrors		P52	—	OPT	OPT	OPT	OPT	○	○
Cross-member for trailer hitch		P64	OPT	OPT	OPT	OPT	OPT	OPT	OPT
Yellow halogen headlamps (LHD)		Q07	OPT	OPT (LHD)	OPT	OPT	OPT (LHD)	OPT (LHD)	OPT (LHD)
Headlamp washers		Q56	OPT	OPT	OPT	OPT	OPT	○	○
Battery N50Z		Q22	OPT	OPT	OPT	—	—	OPT	OPT
Battery NS70		Q27	OPT	OPT	OPT	—	—	OPT	OPT
Battery (NX120-7, 80AH)		Q61	—	—	—	OPT	OPT	—	—
Air-conditioner		R11	OPT	OPT	OPT	OPT	OPT	—	—
Automatic temperature-controlled air-conditioner		R13	—	—	—	—	—	OPT	OPT
AM/FM (MPX) radio		J03	OPT	OPT	OPT	OPT	OPT	—	—
LW/MW radio		J04	OPT	—	—	—	—	—	—
LW/MW/FM (MPX) radio		J15	—	OPT	OPT	OPT	OPT	—	—
High grade cassette tape player & AM/FM radio/w power antenna		J06	—	OPT	OPT	OPT	OPT	○/—	○/—
Cassette tape player & LW/MW/FM (MPX) radio/w power antenna		J11	—	OPT	OPT	OPT	OPT	OPT/○	OPT/○
Cassette tape player & radio unit less (w/speaker, harness, antenna)		J97	—	—	—	—	—	OPT	OPT
Central door locking system		V13	—	OPT	OPT	OPT	OPT	○	○

OPT: Optional ○: Standard —: Not available *4-speed automatic also available (2000GLS-A/T)

MAJOR SPECIFICATIONS & EQUIPMENT

ITEMS	MODELS	1600EL (E11ASNDL6)	1600GL (E11ASNJL6/R6)	1600GLX (E11ASNUL6)	1800GL-TURBO DIESEL (E14ASNJFL6)	1800GLX-TURBO DIESEL (E14ASNUFL6/R6)	2000GLS* E15ASNHL6/R6 E15ASRHL6/R6	2000 TURBO (E15ASNGTL6/R6)
Electronic ignition system		○	○	○	—	—	○	○
Auto tap-free choke		○	○	○	—	—	○	○
Alternator w/IC regulator		65A	65A	65A	55A	55A	65A	65A
ECI (Electronic Control Injection) & electric fuel pump		—	—	—	—	—	—	○
Hydraulic clutch		—	—	—	○	○	—	○
Intercooler		—	—	—	○	○	—	○
Engine oil-cooler		—	—	—	○	○	—	—
Ventilated front disc brakes		○	○	○	○	○	—	○
Rear drum brakes (*rear disc brakes)		○	○	○	○	○	○	○
Vacuum brake booster (*9")		○	○	○	○	○	○*	○*
PCV (pressure control valve) & level sensor		○	○	○	○	○	○*	○*
Steering wheel		PVC	PVC	Urethane	PVC	Urethane	Urethane	Urethane
Sports type urethane steering wheel		—	—	—	—	—	—	○
Height-adjustable steering column w/anti-theft lock		○	○	○	○	○	○	○
Wheels and tyres:								
4.5J-13 rims		OPT	—	—	—	—	—	—
5J-13 rims		○	○	○	—	—	—	—
5.5JJ-14 rims		—	—	—	○	○	○	—
5J-13 (light alloy wheels) & large tyres		—	OPT	OPT	—	—	—	—
5.5JJ-14 (light alloy wheels) & large tyres		—	—	—	—	—	—	—
165SR13		○	○	○	—	—	OPT	○
165SR14		—	—	—	○	○	—	—
185/70SR13		—	OPT	OPT	—	—	—	—
185/70HR14		—	—	—	OPT	OPT	○	—
195/60R14 85H		—	—	—	—	—	OPT	○
Temporary spare tyre (LHD only)		○	○	○	○	○	○	○
Half wheel covers		○	○	○	○	○	○	○
Full wheel covers		—	—	—	OPT	OPT	OPT	—
Wax injection & anti-rust treatment		○	○	○	○	○	○	○
Central door locking system		—	OPT	OPT	OPT	OPT	○	○
Child-proof door locks		○	○	○	○	○	○	○
Remote boot/fuel lid opener		—	○	○	○	○	○	○
Tinted glass (all round)		○	○	○	○	○	○	○
Tinted, laminated windscreen		○	○	○	○	○	○	○
Heated rear window		○	○	○	○	○	○	○
Reclining front seat		○	○	○	○	○	○	○
Height-adjustable driver's seat w/lumbar support		○	○	○	○	○	○	○
6-way adjustable driver's seat		—	—	—	—	—	○	○
Under-seat tray (passenger side only)		○	○	○	○	○	○	○
Centre armrest on rear seat w/boot access		—	—	○	—	○	○	○
Seat upholstery:								
Fabric (*partial)		○*	○	—	○	—	—	—
High-grade fabric (*special turbo seat)		—	—	○	—	○	—	○*
Velour		—	—	—	—	—	○	—
See-through type front head restraints (tiltable)		○	○	○	○	○	○	—
Unibelt (ELR) front seat belts		○	○	○	○	○	○	○
Unibelt (ELR) rear seat belts x 2, lap x 1		OPT	OPT	OPT	OPT	OPT	○	○
Lockable glovebox (*illuminated)		○	○*	○*	○*	○*	○*	○*
Centre console (*w/sliding cover)		○	○	○	○	○	○*	○*
Console box		—	—	○	—	○	○	○

*4-speed automatic also available (2000GLS-A/T)

ITEMS	MODELS	1600EL (E11ASNDL6)	1600GL (E11ASNJL6/R6)	1600GLX (E11ASNUL6)	1800GL-TURBO DIESEL (E14ASNJFL6)	1800GLX-TURBO DIESEL (E14ASNUFL6/R6)	2000GLS* E15ASNHL6/R6 E15ASRHL6/R6	2000 TURBO (E15ASNGTL6/R6)
Illuminated ashtray and cigar lighter on facia		○	○	○	○	○	○	○
Moulded type door trim (*premium)		○	○	○*	○	○*	○*	○*
High grade boot space trim		—	○	○	○	○	○	○
Floor carpet		Needle punch	Loop	Cut pile	Loop	Cut pile	Cut pile	Cut pile
Needle-punch boot carpet (*vinyl reinforced)		○	○*	○*	○*	○*	○*	○*
Polypropylene bumper:								
Normal		○	○	—	○	—	—	—
Body coloured w/bright moulding		—	—	○	—	○	—	—
Body coloured, lower dark grey treatment w/bright moulding		—	—	—	—	—	○	○
Drip & belt-line bright moulding (*black)		○	○	○	○	○	○	○*
Bright door sash moulding		—	—	—	—	—	○	—
Side protector moulding		○	○	○	○	○	○	○
Body coloured A-pillar garnish (*black)		○	○	○	○	○	○*	○
Bright A-pillar garnish		—	—	—	—	—	○	—
Body coloured C-pillar garnish (*black)		○	○	○	○	○	○	○*
Dark grey painted side sill		—	—	○	—	○	○	○
Dark grey painted lower body		—	—	—	—	—	○	○
Black treatment on door window frame		—	—	—	—	—	—	○
Soft type assist grips (3-pcs. *w/coat hanger on rear hanger (2 pcs.))		○	○*	○*	○*	○*	○*	○*
Sunvisor & vanity mirror		Vinyl	Vinyl	Fabric	Vinyl	Fabric	Fabric	Fabric
Safety mounted rearview mirror (*dipping)		○	○*	○*	○*	○*	○*	○*
Driver's footrest		—	○	○	○	○	○	○
Remote control door mirror (*power)		○ (1-pc)	○	○	○	○	○*	○*
Mud guard (4 pcs.)		OPT	OPT	OPT	OPT	OPT	OPT	OPT
Bi-level air-mix heater		○	○	○	○	○	○	○
Automatic temp. control heater		—	—	—	—	—	○	○
Battery:								
NT80-S6, 12V-45AH (LHD)		○	○/—	○	—	—	○/—	○/—
N50Z, 12V-60AH (RHD)		OPT	OPT/○	OPT	—	—	OPT/○	OPT/○
N70, 12V-70AH		—	—	—	○	○	—	—
NX120-7, 12V-80AH		—	—	—	OPT	OPT	—	—
Halogen headlamps		○	○	○	○	○	○	○
Rear fog lamps		○	○	○	○	○	○	○
Interior lamps (*w/map & personal lamps)		○	○	○	○	○	○*	○*
Door courtesy lamps		—	—	—	—	—	○	○
Semi-concealed wipers (*fully concealed)		○	○	○*	○	○*	○*	○*
Intermittent wiper system (*speed related)		—	○	○	○	○	○*	○*
Headlamp washers		OPT	OPT	OPT	OPT	OPT	○	○
Backlit binnacle (*illuminated pointer)		○	○	○*	○	○*	○*	○*
Tachometer and voltmeter		—	—	○	—	○	○	○
Analogue quartz clock (*digital)		○	○	○*	○	○*	○*	○*
Low fuel warning lamp		○	○	○	○	○	○	○
Seat-belt warning lamp		—	—	—	—	—	○	○
Stoplamp failure indicator		—	—	—	—	—	○	○
Rheostat for binnacle illumination		—	○	○	○	○	○	○
Headlamp interlock system		—	○	○	○	○	○	○
Wing Column Control Centre		—	—	○	—	○	○	○
ETACS (Electronic Time and Alarm Control System)		—	—	—	—	—	○	○
AM (MW)/FM (MPX) radio & cassette player		OPT	OPT	OPT	OPT	OPT	○/—	○/—
AM (LW/MW)/FM (MPX) high-grade radio & cassette player		—	OPT	OPT	OPT	OPT	OPT/○	OPT/○
Radio antenna on A-pillar (*power on rear-quarter pillar)		OPT	OPT	OPT	OPT	OPT	○*	○*
6 speakers, 2 + 2 x 2-way		—	OPT	OPT	OPT	OPT	○	○
Turbo boost meter		—	—	—	—	—	—	—○
Boot lamp		—	○	○	○	○	○	○

OPT: Optional ○: Standard —: Not available *4-speed automatic also available (2000GLS-A/T)

MAJOR SPECIFICATIONS

ITEM	ENGINE		1600 cc			2000 cc			1800 cc DIESEL		
	MODEL CODE	LHD RHD	E11ASNDL6	E11ASNJL6	E11ASNUL6	E15ASNHL6	E15ASRHL6	E15ASNGTL6	E14ASNJFL6	E14ASNUL6	
	PRICE CLASS		—	E11ASNJR6	—	E15ASNHR6	E15ASRHR6	E15ASNGTR6	—	E14ASNUR6	
	TRANSMISSION		1600 EL	1600 GL	1600 GLX	2000 GLS		2000 TURBO	1800GL-T/D	1800GLX-T/D	
DIMENSIONS & WEIGHT	Overall length		5-speed manual			4-speed automatic		5-speed manual			
	Overall width					4560 (179.5)					
	Overall height					1695 (66.7)					
	Wheelbase		1385 (54.5)			1400 (55.1)		1385 (54.5)		1395 (54.9)	
	Track	Front				2600 (102.4)					
		Rear				1445 (56.9)					
	Min. ground clearance					1405 (55.3)					
	Kerb weight		155 (6.1)			170 (6.7)		155 (6.1)		170 (6.7)	
	Gross vehicle weight		1030 (2270)			1030 (2270)	1035 (2280)	1120 (2470)	1135 (2500)	1145 (2525)	1135 (2500)
Seating capacity		persons			1540 (3395)		1645 (3625)		1655 (3650)		1660 (3660)
PERFORMANCE	Max. speed (Estimated)		km/h (mph)			5					
	Min. turning radius		m(ft)			180 (111.9)		175 (108.8)	200 (124.3)	166 (103.2)	
	Max. climbing ability		tan θ			5.3 (17.4)					
ENGINE	Type		4G32			0.42		0.43		0.44	
	Displacement		cc (cu. in)			4G63		4D65			
	Bore x stroke		mm (in)			1597 (97.4)		1997 (121.8)		1795 (109.5)	
	Compression ratio		76.9 x 86.0 (3.03 x 3.39)			85.0 x 88.0 (3.35 x 3.46)		80.6 x 88.0 (3.17 x 3.46)			
	Max. output (DIN net)		kW (PS)/rpm			9.0:1		7.6:1		21.5:1	
	Max. torque (DIN net)		N-m (kg-m)/rpm			55 (75)/5,500		75 (102)/5,500		110 (150)/5,500	
	Cooling fan, electric		dia. (m/m) x blades (W)			122 (12.4)/3,500		160 (16.3)/3,500		245 (25.0)/3,500	
			φ300 x 4 (45)			φ300 x 4 (80)				165 (16.8)/2,250	
ELECTRICAL SYSTEM	Battery		V-AH (20hr)			12-45 (LHD), 12-60 (RHD)				12-70	
	Alternator		V-A			12-65				12-55	
	Starter motor		V-KW			12-0.7		12-0.9	12-1.2	12-0.9	12-1.7
FUEL SYSTEM	Carburettor		Downdraft, 2-barrel			12-0.9		12-1.2	12-0.9	Fuel injection pump	
	Fuel tank capacity		Lit. (US/Imp.gal.)			60 (15.8/13.2)		ECI			
	Fuel consump. (DIN70030)										
	Urban		Lit./100km			10.1		11.3	11.1	12.4	7.7
	90km/h		Lit./100km			5.9		6.4	6.3	7.0	5.6
TRANSMISSION	120km/h		Lit./100km			7.5		8.5	8.3	9.3	6.6
	Clutch		Single, dry w/diaphragm spring			Torque converter		Single, dry w/diaphragm spring, hydraulic			
	Type		KM162			KM163		KM175	KM164	KM163	
		1st	4.226			4.226		2.846	4.070	4.226	
		2nd	2.365			2.365		1.581	2.244	2.365	
		3rd	1.467			1.467		1.000	1.467	1.467	
		4th	1.105			1.105		0.685	1.105	1.105	
		5th	0.855			0.855		—	0.855	0.855	
		Reverse	4.109			4.109		2.176	4.109	4.109	
Final gear ratio		3.470			3.466		3.665	3.187	3.466		
CHASSIS	Steering		Type of gear			Rack & pinion					
	Suspension	Front				MacPherson strut, coil					
		Rear				3-link, torsion axle, coil					
	Brakes	Vacuum booster				8" dia.					
		Front	Ventilated discs for 13" wheels			9" dia.			8" dia.		
		Rear	8" drums, leading and trailing shoes			Ventilated discs for 14" wheels			8" drums, leading and trailing shoes		
	Tyres	Front & rear	165 SR13			185/70 HR14			195/60 R14 85H		165 SR14
Note: These specifications are subject to change without notice.											

Note: These specifications are subject to change without notice.

SPECIFICATIONS COMPARISON

Item		Model	MITSUBISHI GALANT 2000GLS	Nissan Bluebird 1800DX	Mazda 626 1800	Toyota Camry 1800DX	Honda New ACCORD 3-door	Volkswagon New PASSAT Estate	Volkswagon SANTANA GX5	Ford SIERRA 2.0 LB	Vauxhall CAVELIER 1600SGL
DIMENSIONS & WEIGHTS	Overall length	mm (in)	4,560 (179.5)	4,395 (173.0)	4,360 (171.7)	4,415 (173.8)	4,210 (165.8)	4,540 (178.7)	4,545 (178.9)	4,395 (173.0)	4,365 (171.9)
	Overall width	mm (in)	1,695 (66.7)	1,655 (65.2)	1,690 (66.5)	1,690 (66.5)	1,650 (65.0)	1,685 (66.3)	1,695 (66.7)	1,720 (67.7)	1,670 (65.8)
	Overall height	mm (in)	1,385 (54.9)	1,400 (55.1)	1,395 (54.9)	1,395 (54.9)	1,355 (53.4)	1,370 (53.9)	1,380 (54.3)	1,360 (53.5)	1,395 (54.9)
	Wheelbase	mm (in)	2,600 (102.4)	2,525 (99.4)	2,510 (98.8)	2,600 (102.4)	2,450 (96.5)	2,550 (100.3)	2,550 (100.3)	2,610 (102.8)	2,575 (101.4)
	Track	Front	mm (in)	1,445 (56.9)	1,380 (54.3)	1,430 (56.3)	1,465 (57.6)	1,430 (56.3)	1,400 (55.1)	—	1,400 (55.1)
		Rear	mm (in)	1,405 (55.3)	1,345 (53.0)	1,425 (56.1)	1,420 (55.9)	1,420 (55.9)	1,408 (55.4)	—	1,405 (55.3)
	Min. ground clearance	mm (in)	170 (6.7)	195 (7.7)	160 (6.3)	160 (6.3)					
	Kerb weight	kg (lb)	1,120 (2,470)	985 (2,170)	1,070 (2,360)	1,045 (2,305)	949 (2,092)	1,080 (2,380)	1,111 (2,449)	1,025 (2,259)	1,000 (2,204)
	Seating capacity		5	5	5	5					
PERFORMANCE	Min. turning radius	m (ft)	5.3 (17.4)	5.5 (18.0)	5.1 (16.7)	5.3 (17.4)					
ENGINE	Displacement	cc (cu. in)	1,997 (121.8)	1,770 (108)	1,789 (109.1)	1,832 (111.8)	1,602 (97.8)	1,921 (117.2)	1,921 (117.2)	1,993 (121.6)	1,598 (97.5)
	Bore x stroke	mm (in)	85.0 x 88.0 (3.35 x 3.46)	85.0 x 78.0 (3.35 x 3.07)	86.0 x 77.0 (3.39 x 3.03)	80.5 x 90.0 (3.17 x 3.50)	77.0 x 86.0 (3.03 x 3.39)	79.5 x 77.4 (3.13 x 3.05)	79.5 x 77.4 (3.13 x 3.05)	—	80.0 x 79.5 (3.15 x 3.13)
	Compression ratio		9.5:1	8.5:1	8.6:1	9.0:1	8.8:1	10.0:1	10.0:1	—	9.2:1
	Max. output (DIN net)	kW (PS)/rpm	75 (102)/5,500	—	64 (86)/4,800	66 (90)/5,200	80 (82)/5,000	115 (156)/5,900	115 (156)/5,900	105 (143)/—	90 (122)/5,800
	Max. torque (DIN net)	N-m(kg-m)/rpm	160 (16.3)/3,500	—	136 (13.9)/2,500	142 (14.5)/3,400	—	154 (15.7)/3,700	154 (15.7)/3,700	—	126 (12.8)/ 3,800–4,200
FUEL SYSTEM	Fuel tank capacity	Lit. (US gal)	60 (15.8)	62 (16.4)	60 (15.8)	55 (14.5)	60 (15.9)	60 (15.9)	60 (15.9)	60 (15.9)	61 (16.1)
STEERING	Type of gear		RP (PS)	RP	RP	RP					
SUSPENSION	Front		MCB	MC	MCB	MCB	MC	MC	MC	MC	MC
	Rear		3-link, torsion axle, coil	4LC	ISC	MCB	MC	TaC	TaC	ISTaC	ITaC
BRAKES	Front		VD	VD	D	D	VD	VD	VD	VD	VD
	Rear		Dr	Dr	Dr	Dr	Dr	Dr	Dr	Dr	Dr
TYRES	Front/Rear		185/70HR14	6.45134PR	165SR13	165SR13	165SR13	185/70HR13	195/60HR14	—	165SR13

RB: Recirculating ball
PS: Power steering
RP: Rack and pinion

ISC: Independent struts with coil springs
MCB: MacPherson struts with stabilizer bar
4LC: 4-link coil spring

VD: Ventilated discs
D: Discs
Dr: Drums

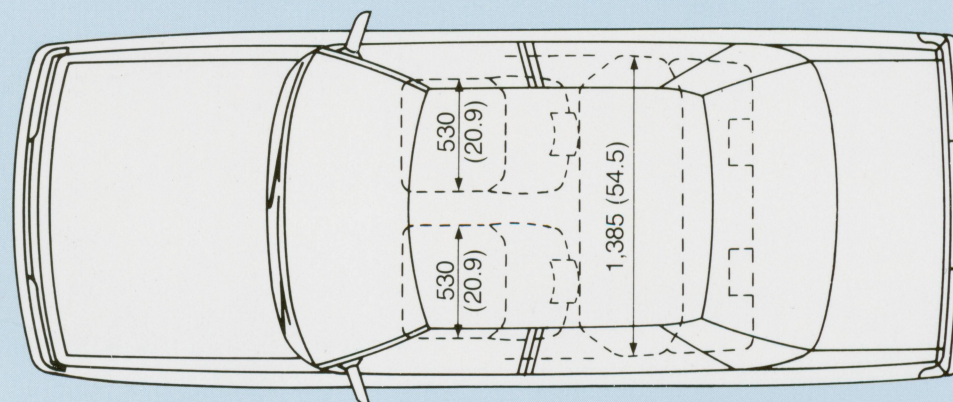
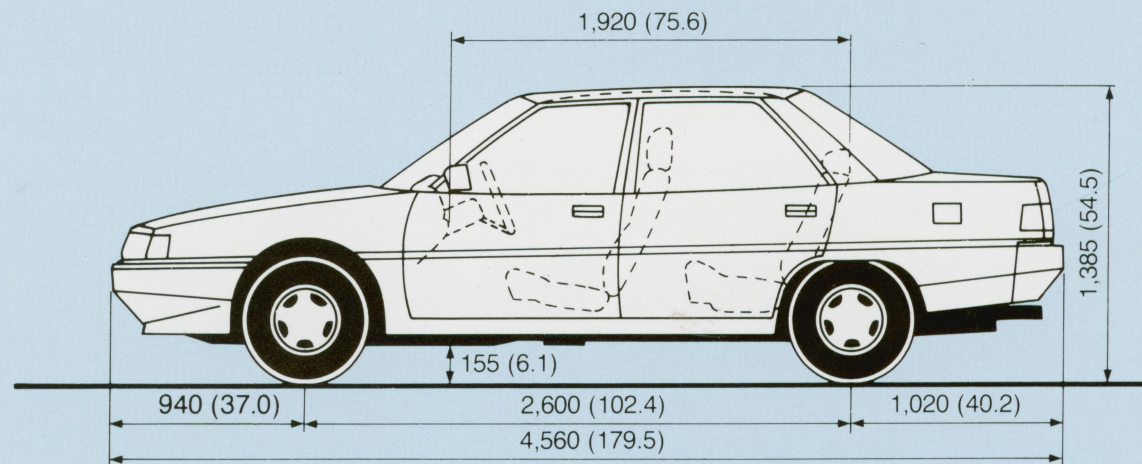
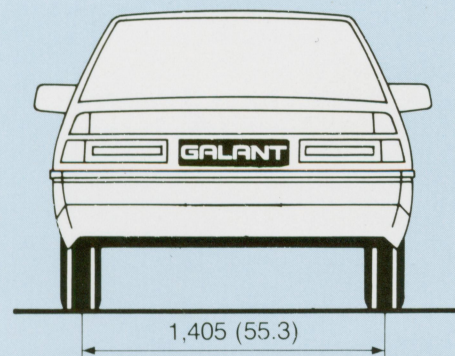
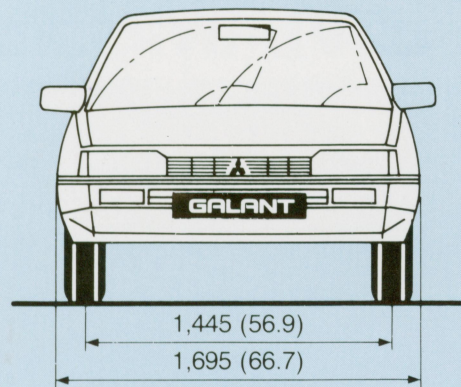
MC: MacPherson struts, coil
ITaC: Independent, trailing arm, coil
DC: Dead beam axle, radius arm, Panhard rod, coil

TaC: Trailing arm, coil springs
ISTaC: Independent, semi-trailing arm, coil springs

MODEL CHART

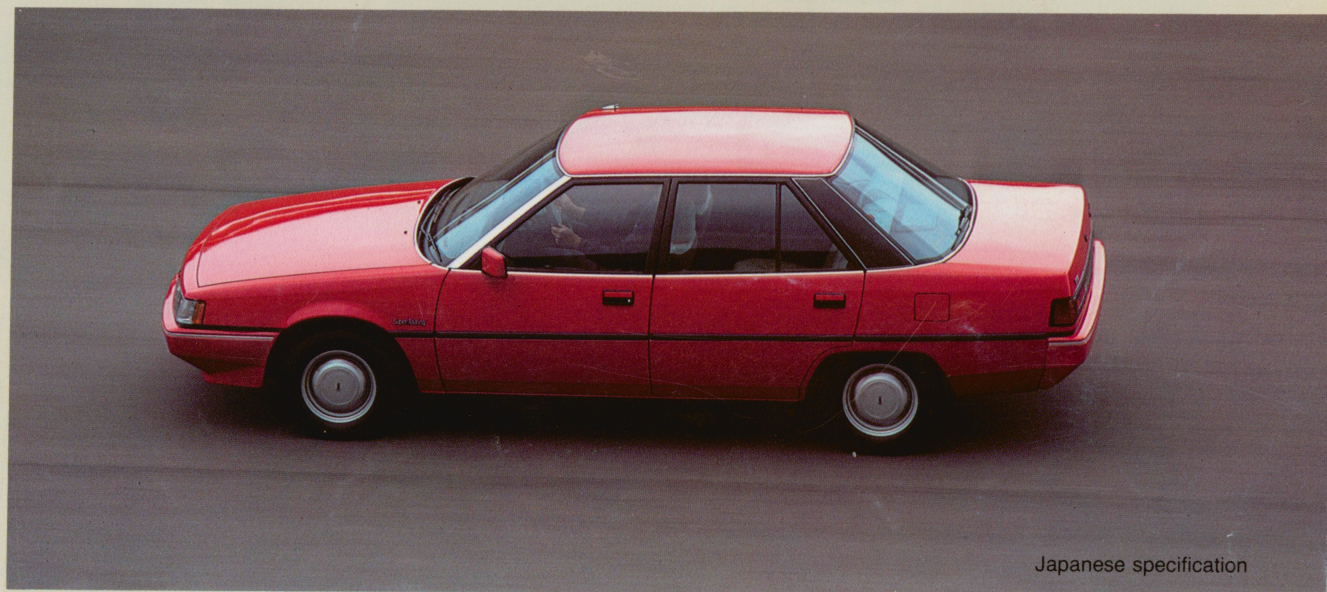
MODEL CODE		PRICE CLASS	BODY STYLE	ENGINE	TRANSMISSION
LHD	RHD				
E14ASNJFL6	—	1800GL-T/D	4-door Sedan	1,795 cc, OHC <4D65 T/D> Intercooled turboDiesel Engine	5-M/T <KM163>
E14ASNUFL6	E14ASNUFR6	1800GLX-T/D			
E11ASNDL6	—	1600EL		1,597 cc, OHC <4G32> Engine	5-M/T <KM162>
E11ASNJL6	E11ASNJR6	1600GL			
E11ASNUL6	—	1600GLX		1,997 cc, OHC <4G63> Engine	5-M/T <KM163> 4-A/T <KM175> w/ELC
E15ASNHL6	E15ASNHR6	2000GLS			
E15ASRHL6	E15ASRHR6	2000GLS-A/T			
E15ASNGTL6	E15ASNGTR6	2000 TURBO		1,997 cc, OHC ECI, TURBO <4G63 ECI/T>	5-M/T <KM164>

DIMENSIONAL VIEWS



mm (in)

1600GLX



Japanese specification



EM03 (0.8) June '84R Printed in Japan