

500 stk



The new Austin 1800, 1800 HL and 2200 HL.
The car that's got it all together.



AUSTIN MORRIS, BRITISH LEYLAND UK LIMITED, BOX 41, LONGBRIDGE, BIRMINGHAM B31 2TB

Lithographed in England by The Nuffield Press Limited, Cowley, Oxford 26/47 (88098) 1/75—150m.

Publication No. 3105



Austin



This is the new 18-22 Series. And it's new in every sense of the word. It's a car that totally alters the entire concept of modern big car motoring.

There's a choice of three models. The Austin 1800 Saloon, 1800 HL and the 2200 HL.

To find out exactly why we call the 18-22 Series 'The car that's got it all together' just read the following list. It's a long list.

But it should put the new Austin on your short list.

1 Advanced aerodynamic wedge-shaped body style reduces drag, improves m.p.g.

2 All independent Hydragas® suspension that needs no regular maintenance for the life of the car.

3 Front-wheel drive.

4 Wide-track and wide radial-ply tyres for better road holding.

5 Choice of two economical engine sizes: OHV 4-cylinder and a performance OHC 6-cylinder.

6 Dual circuit power-assisted brakes with front discs.

7 Power-assisted steering on six-cylinder model.

8 Reclining driver's seat adjusts up and down as well as back and forward.

9 Three-speed ventilation system includes re-circulatory control on low-speed, side-window demist and foot level vents.

10 Comprehensive safety package ranging from heated rear window to rigid, steel body shell.

11 Soundproofing to luxury car standards.

12 Rust protection includes wax injection of sill members, electro-phoretic paint, underbody protection and front wheel arch liners.

13 Trapezoidal quartz halogen headlamps.

14 Parts and service available from over 2,500 Distributors and Dealers throughout the country.

**The car
that's got it all
together.**

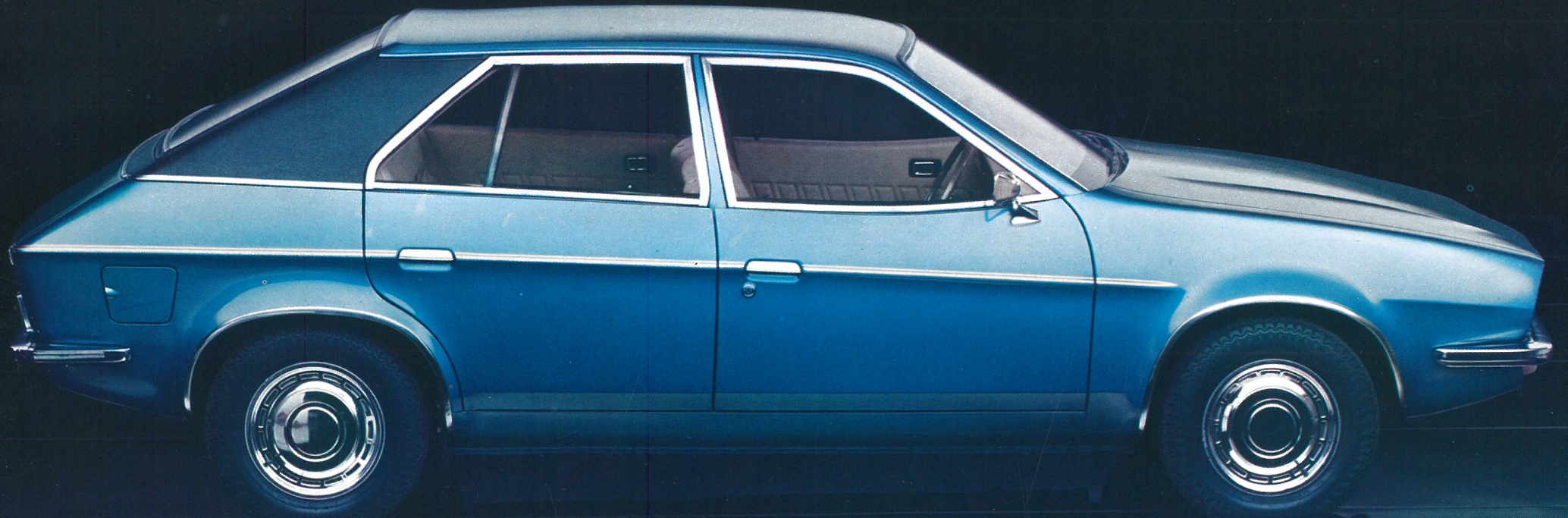


Having cast your eyes over the list of the new Austin's qualities, cast them over the

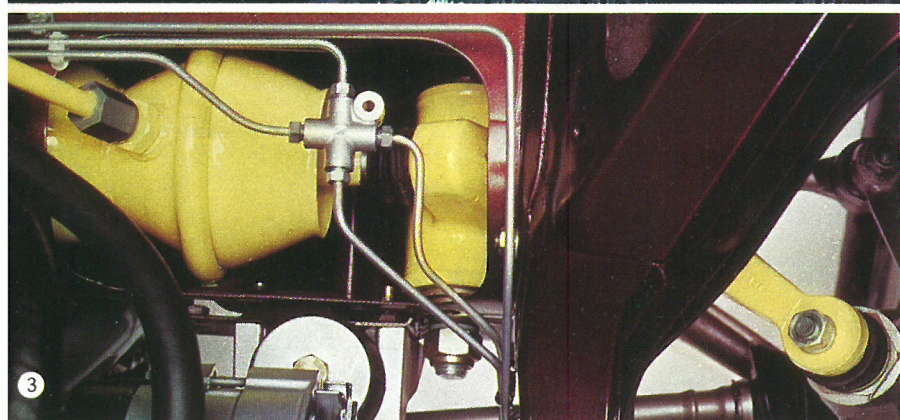


car itself. It's nothing if not elegant. Its stylish, aerodynamic wedge-shaped body with that

long, raking bonnet is guaranteed to make a few heads turn.



The car that's got it all together in styling.



1. The 2227 cc, 6-cylinder engine. 2. Wide, radial-ply tyres. 3. Unique, anti-pitch Hydragas[®] suspension. 4. Stylish, aerodynamic wedge-shaped body.

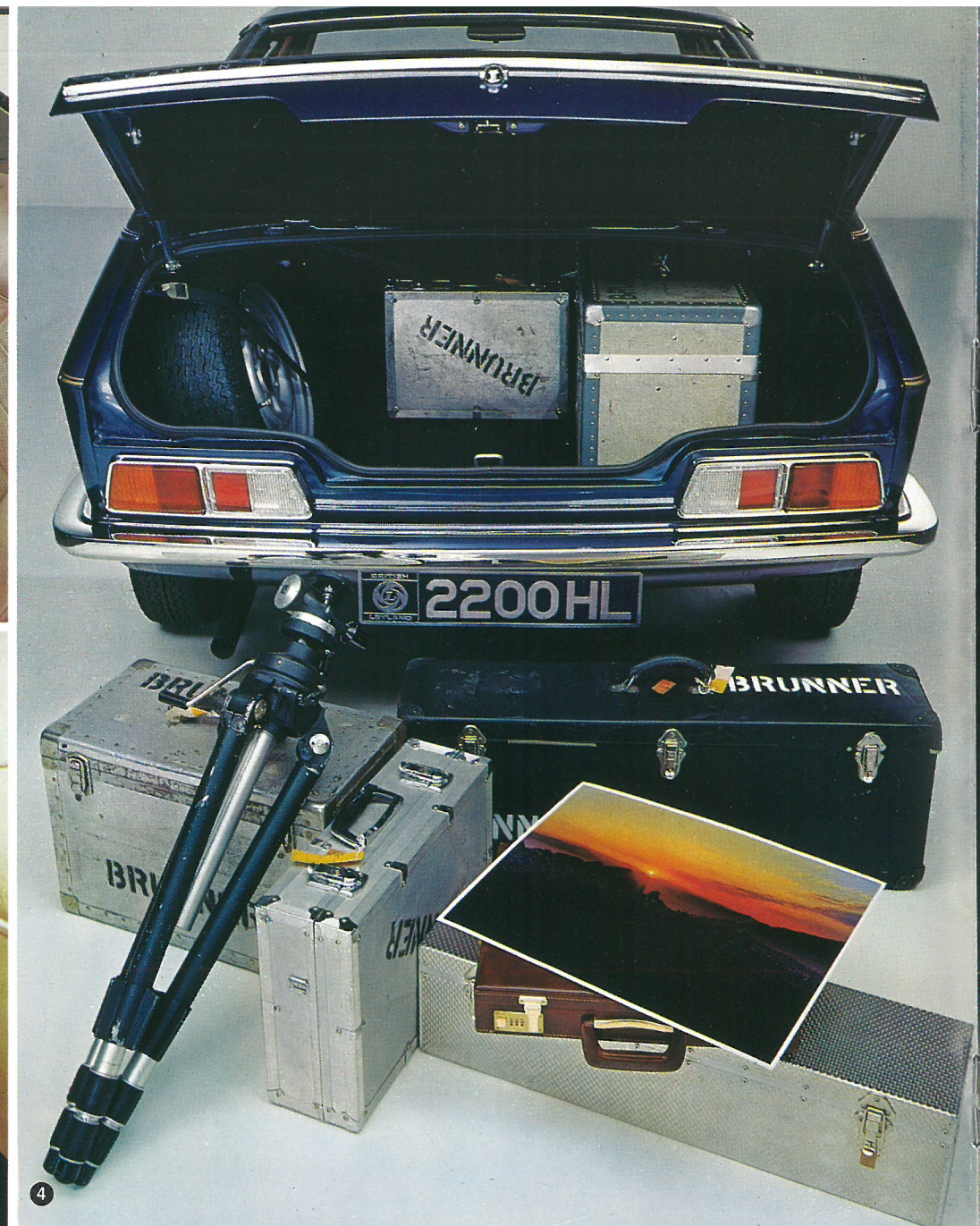
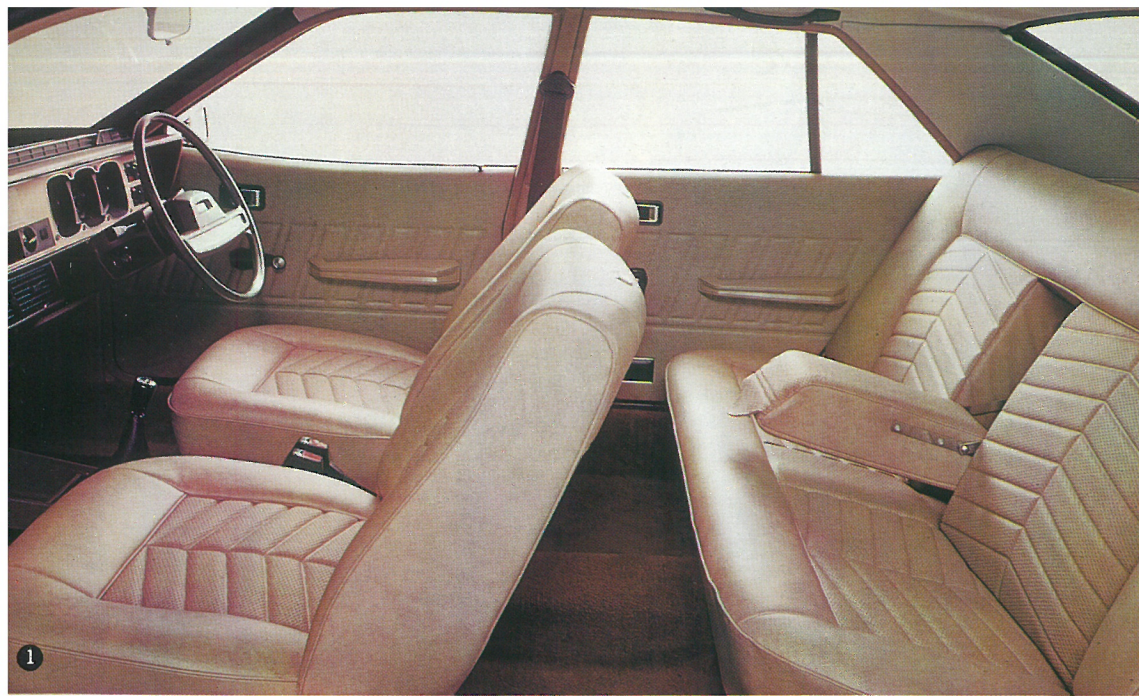
Hydragas[®] suspension, front wheel drive, a wide track (for greater stability) and wide tyres (for increased road grip) make the

new Austin a remarkably responsive car. The amount of thrust you have is completely up to you, with a choice between

the petrol-saving 4-cylinder 1798 cc models and the 6-cylinder 2227 cc version, geared to performance.



The car that's got it all together in performance.



1. Luxurious, spacious interior. 2. Extra long centre console (on HL models). 3. Fitted carpet. 4. 12.56 cubic feet of usable boot space.

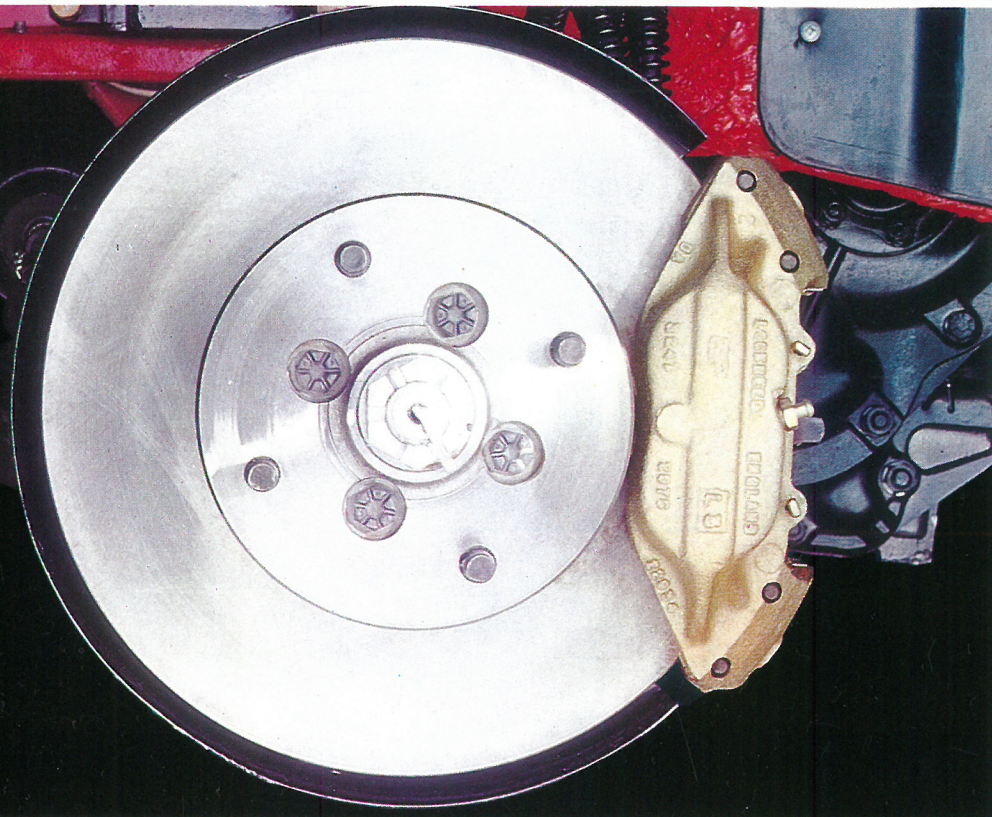
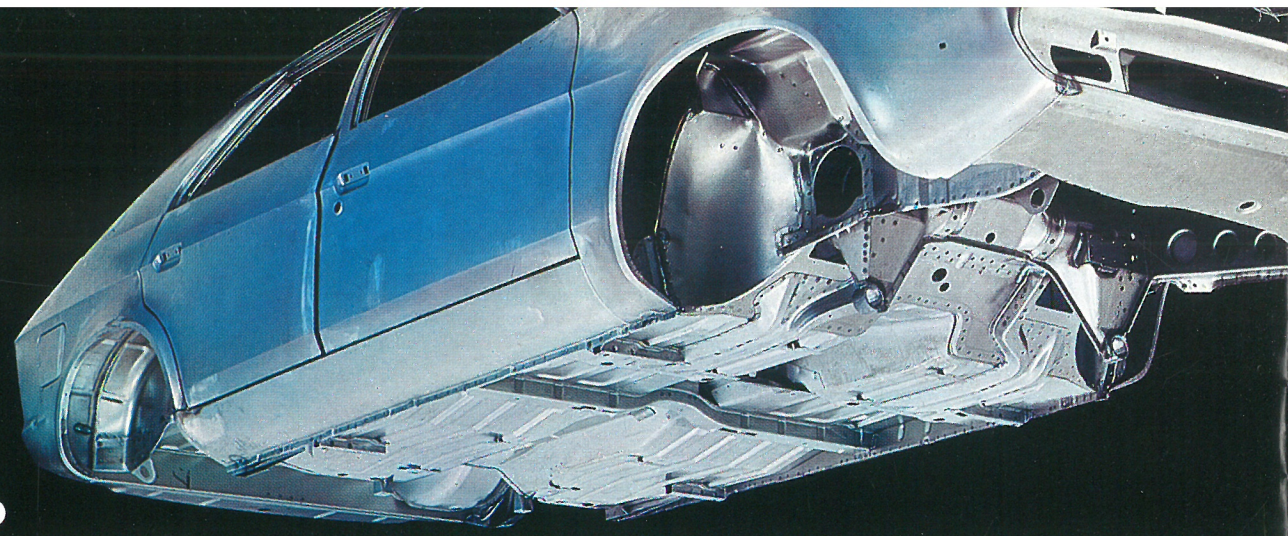
Without doubt, the new Austin is a luxurious motor car. There's an unusually comfortable reclining driver's seat which even

adjusts up and down to suit just about every driver. Great care has been taken to ensure that interior soundproofing keeps noise levels to

a minimum, while even the ventilation unit includes a superb, 3-speed fan heating system with re-circulatory control on low speed.



The car that's got it all together in luxury.



1. Warning device for unfastened seat belt. 2. Integral, rigid steel body shell. 3. Power-assisted dual circuit brakes with front discs. 4. Reclining rise-and-fall driver's seat for total control.

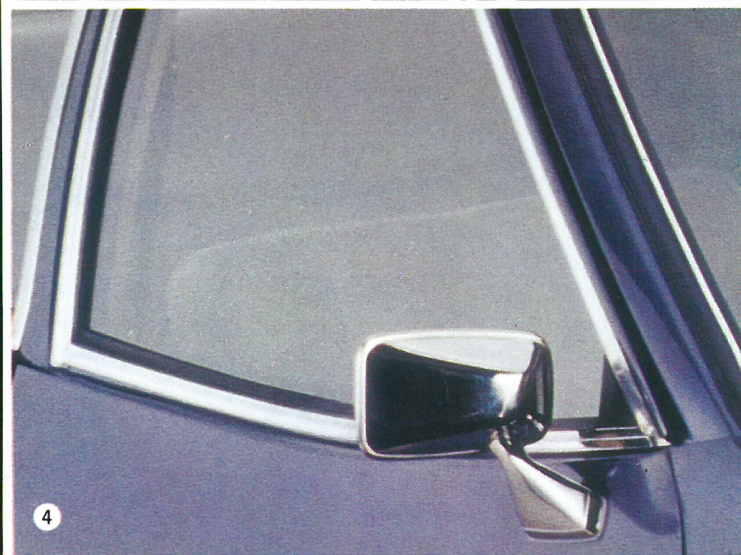
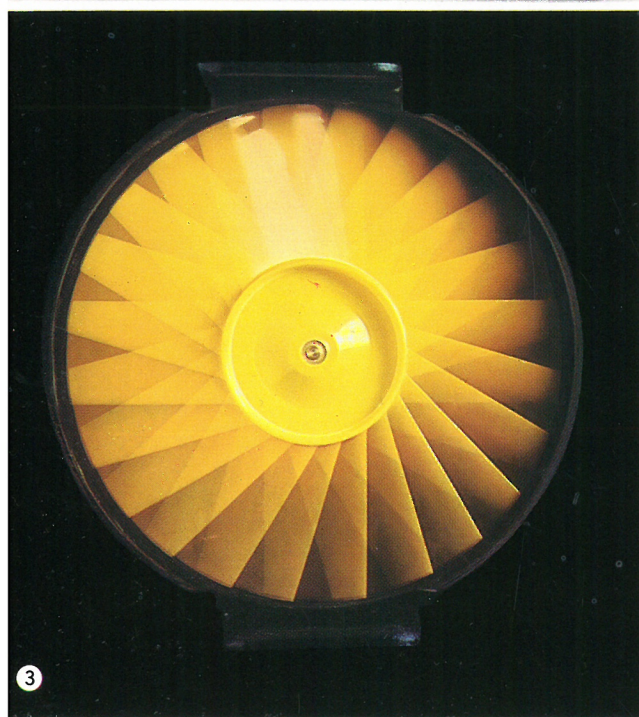
When it comes to safety, we think the new Austin is second to none. There's a large area of vision, with a heated

rear window and full-width windscreen demist. You can also demist the side windows. The Austin's first class braking system even

has a failure warning device. Anti-pitch Hydragas[®] suspension, a wide track and wide, radial-ply tyres give the car superb balance and road-holding.



The car that's got it all together in safety.



1. Illuminated switches on dashboard. 2. Heated rear window. 3. Electric engine cooling fan. 4. Two exterior mirrors as standard. 5. Front wheel arch liners and under-body protection against rust.

The car that's got it all together.

ENGINE (1800): Four-cylinder, transverse, push-rod overhead valve. Bore 3.16 in (80.26 mm); stroke 3.5 in (89.00 mm). Capacity 109.7 in³ (1798 cm³). Oil capacity 10.25 pints (6.82 litres). Single SU HS6-type carburetter. 82 b.h.p. at 5,200 rev/min.* Maximum torque 14.1 kgf. m. at 2,750 rev/min.* Compression ratio 9.0 : 1. Mechanical fuel pump. Fuel capacity 16 gallons (72.74 litres). Pressurized cooling system with thermostatically controlled, electrically-driven fan.

ENGINE (2200): Six-cylinder, transverse, overhead valve with single overhead camshaft. Bore 3.0 in (76.2 mm); stroke 3.2 in (81.28 mm). Capacity 135.8 in³ (2227 cm³). Oil capacity 13 pints (7.39 litres). Twin SU HIF6-type low emission carburetters. 110 b.h.p. at 5,250 rev/min.* Maximum torque 17.1 kgf. m. at 3,500 rev/min.* Compression ratio 9.0 : 1. Mechanical fuel pump. Fuel capacity 16 gallons (72.74 litres). Pressurized cooling system with thermostatically controlled, electrically-driven fan.

CLUTCH: Diaphragm-spring, single dry plate, hydraulically actuated. Diameter: **(1800):** 8 in (0.20 m); **(2200):** 8.75 in (0.22 m).

GEARBOX: Four-speed, all synchromesh, remote control gear lever. Ratios: 1st 3.29, 2nd 2.06, 3rd 1.38, 4th 1.00, reverse 3.07 : 1.

FINAL DRIVE: Front-wheel drive, open shafts with constant velocity joints. Ratio 3.72 : 1.

STEERING: Rack and pinion, power-assisted on **2200 models.** Turning circle 37 ft 10 in (11.53 m).

ROAD WHEELS: Pressed steel disc wheels with 185/70SR—14 radial-ply tyres.

BRAKES: Independent dual circuit hydraulic with servo-assistance. Front: 10.6 in (0.27 m) diameter discs. Rear: 9.0 in (0.23 m) diameter drums with leading and trailing shoes.

SUSPENSION: Independent with †Hydragas suspension units interconnected front to rear.

* DIN 70020

† Hydragas is a registered Trade Mark

ELECTRICAL: 12-volt, negative earth, 55 Ah battery. Alternator. Pre-engaged starter motor. Electrically heated rear window. Reversing lamps. Illuminated, fascia mounted cigar lighter. Twin horns. Hazard warning lamps. Fibre optic illumination for switches. Combined ignition/starter switch incorporates steering-column lock. Multi-purpose lever on right-hand of steering-column controls horn, headlamp flasher, dipswitch and self-cancelling direction flashers. Lever on left-hand of steering-column controls electric windscreen washer and two-speed windscreen wipers with flick-wipe facility.

INSTRUMENTS: Speedometer with distance and trip recorders. Fuel gauge. Water temperature gauge. Battery condition gauge (**HL only**). Electric clock (**HL only**). Warning lamps to indicate flashers working, alternator not charging, headlamp high beam position, low oil pressure, hazard warning lamps working, seat belts not fastened, brake line failure, and heated rear window on.

COACHWORK: Four-door, five-seater saloon of all-steel unitary construction with underbody protection and wax-injected body sills. Parcel shelves front and rear. Full-width padded fascia panel. Fresh-air ventilation. Lockable glovebox. Twin sun visors. Fitted carpet floor covering. Anti-burst door locks (incorporating child safety lock on rear doors). Flush-fitting outside door handles. Dipping rear-view mirror. Twin exterior door-mounted mirrors. Armrests incorporating door pulls on all doors. Ashtrays front and rear. Reclining front seats, with driver's seat adjustable for height as well as fore and aft movement. Seat wearing surfaces trimmed with knit-backed expanded vinyl. Interior bonnet release. Vinyl hand brake gaiter. Front door-operated courtesy lamp. Felt-backed vinyl boot mat. Twin gas filled bonnet support stays. Twin telescopic boot lid stays. Full-width, wrap round chromium-plated bumpers. Bright window capping. Fresh air heater/demister with air blend and three-speed fan. Factory fitted inertia reel front seat belts.

HL models: Knit-backed expanded vinyl seat wearing surfaces with patterned panels. Rear seat folding armrest. Floor console surrounding gear lever. Grab rails and coat hooks in rear compartment. Aluminium sill tread strip. Passenger vanity mirror. Lockable fuel filler cap. Coach line. Bright door frame capping. Vinyl-covered rear quarter panels. Bright wheel arch moulding. Wheel trim rings.

OPTIONAL EXTRAS: Automatic transmission. Denovo wheels and tyres. Head restraints. Laminated windscreen. Metallic paint finish. Tinted glass. Power-assisted steering (**except 2200**).

PERFORMANCE DATA OBTAINED BY BRITISH LEYLAND ENGINEERS

	1800	2200
0-30 m.p.h.	5.0 seconds	4.0 seconds
0-40 m.p.h.	7.5 seconds	6.5 seconds
0-50 m.p.h.	10.5 seconds	9.0 seconds
0-60 m.p.h.	15.5 seconds	13.0 seconds
Maximum speed	98 m.p.h.	106 m.p.h.

Fuel consumption at steady speed:

M.p.h.	1800	2200
30	49 m.p.g.	42 m.p.g.
40	43 m.p.g.	38 m.p.g.
50	38 m.p.g.	35 m.p.g.
60	32 m.p.g.	30 m.p.g.
70	28 m.p.g.	27 m.p.g.

British Leyland UK Limited is constantly seeking ways to improve the specification, design and production of its vehicles and alterations take place continually. While every effort is made to produce up to date literature, this Brochure should not be regarded as an infallible guide to current specification, nor does it constitute an offer for the sale of any particular vehicle.

Distributors and Dealers are not agents of British Leyland UK Limited and have absolutely no authority to bind British Leyland UK Limited by any express or implied undertaking or representation.

Specifications.



Unipart accessories can help you tailor your car to meet your own particular requirements.

As with all Unipart products, the specification and performance of each item has been approved by British Leyland engineers and chemists for quality and reliability.

Mudflaps: GAC 216 (one pair)
(Suitable for fitment front and rear)

Tailored Rubber Mats: GAC 217
(one pair)

Fog Lamp Brackets: GAL 197

Rear Fog Lamp Brackets: GAL 198

Weathershield: GTT 151

Spare Wheel Cover: GLZ 145

Head Restraints:

- GLZ 138 AM 1800/2200 Navy
- GLZ 139 AM 1800/2200 Sorrel
- GLZ 140 AM 1800/2200 Mink Beige

Petrol Locking Cap: GSS 166

Standard fit on HL models

Rear Floor Mats: GAC 181 (one pair)

Fog Lamps: Recommended GAL 171
Rectangular QH

Alternatives: GAL 103 Rectangular QH
(large)
GAL 105 Round BPS
GAL 139 Round QH

Rear Fog Warning Lamps:

- GAL 189 Rectangular (large)
- GAL 191 Rectangular (small)

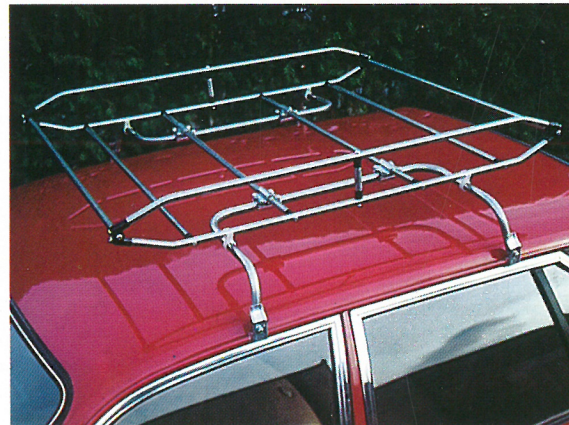
Rear Seat Belts: GSS 165 (one belt)

Car Care Kit: GAC 210

Radio Aerial: GAE 112

Roof Rack: GTT 137

Fire Extinguisher: GEF 102



UNIPART

Accessories for the 18-22 Series.

Dimensions

	in	cm		in	cm		
†*Front seat head room (uncompressed)	A	35-37	89-85	Luggage boot width	P	40-00	101-60
†Rear seat head room (uncompressed)	B	33-37	84-75	†Front seat cushion width	Q1	22-50	57-10
†Front seat cushion depth	C	19-06	48-40	†Front cushions overall width	Q2	50-50	128-20
†Rear seat cushion depth	D	17-16	43-60	†Rear cushion overall width	R	55-38	140-70
†Front seat squab height	E	22-20	56-40	Width between front doors (at waist)	S	57-30	145-54
†Rear seat squab height	F	24-88	63-20	†Width across rear seat	T	56-30	143-00
†*Front seat cushion height	G	11-67	29-65	Shoulder width over front seat	U	56-50	143-50
†Rear seat cushion height	H	14-04	35-70	Shoulder width over rear seat	V	55-50	141-00
†*Distance between seats—max.	I	16-69	42-40	Wheelbase	W	105-24	267-30
†*Distance between seats—min.	I	9-34	23-75	Overall height max. unladen	X	55-48	140-90
†*Steering-wheel to squab—max.	J	18-11	46-00	Overall width	Y	68-11	173-00
†*Steering-wheel to squab—min.	J	11-32	28-75	Overall length	Z	175-41	445-55
†*Steering-wheel to cushion	K	5-90	15-00	Front door entry width	AA	44-23	112-40
†*Front seat leg reach—max.	L	50-25	127-70	Rear door entry width	AB	42-71	108-50
†*Front seat leg reach—min.	L	43-83	111-40	Track at front		58-00	147-30
†Rear seat leg reach—max.	M	49-25	125-10	Track at rear		57-36	145-70
†Rear seat leg reach—min.	M	41-81	106-20	Ground clearance unladen		6-45	16-40
Luggage boot height	N	20-25	51-50	Kerbside weight (approx.)			
Luggage boot depth	O	41-50	105-40	1800		2557 lb	1160 kg
				2200		2638 lb	1197 kg

* With driver's seat at one position above lowest adjustment † Approximate measurements

