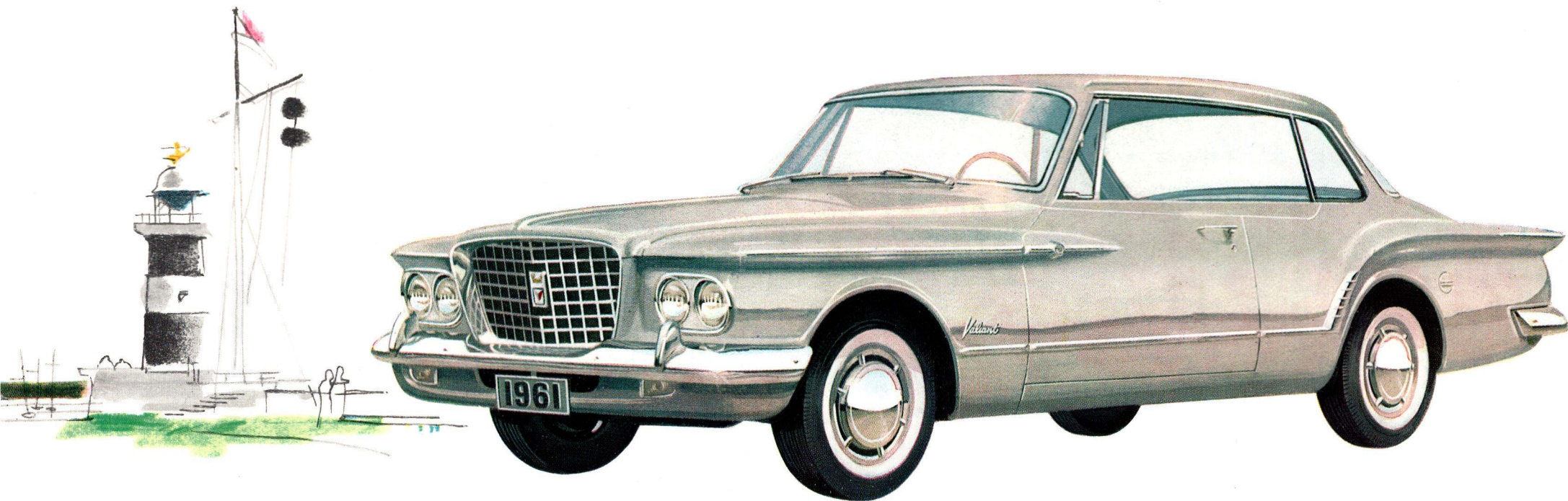
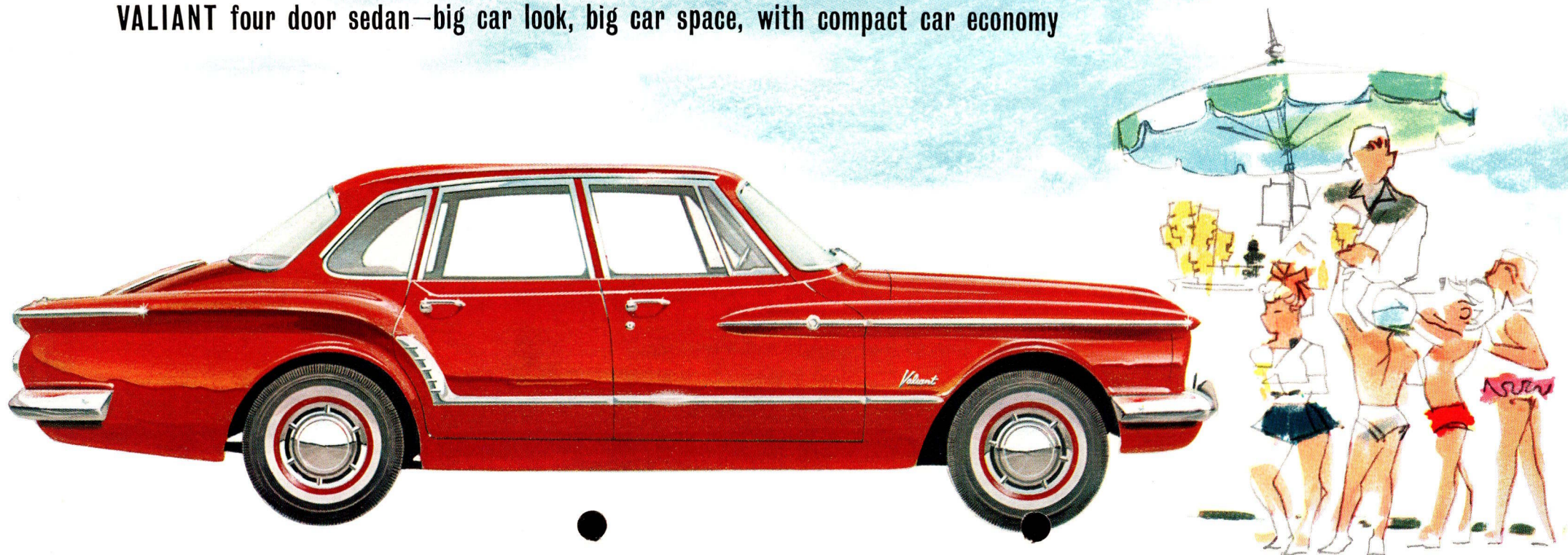


Valiant '61

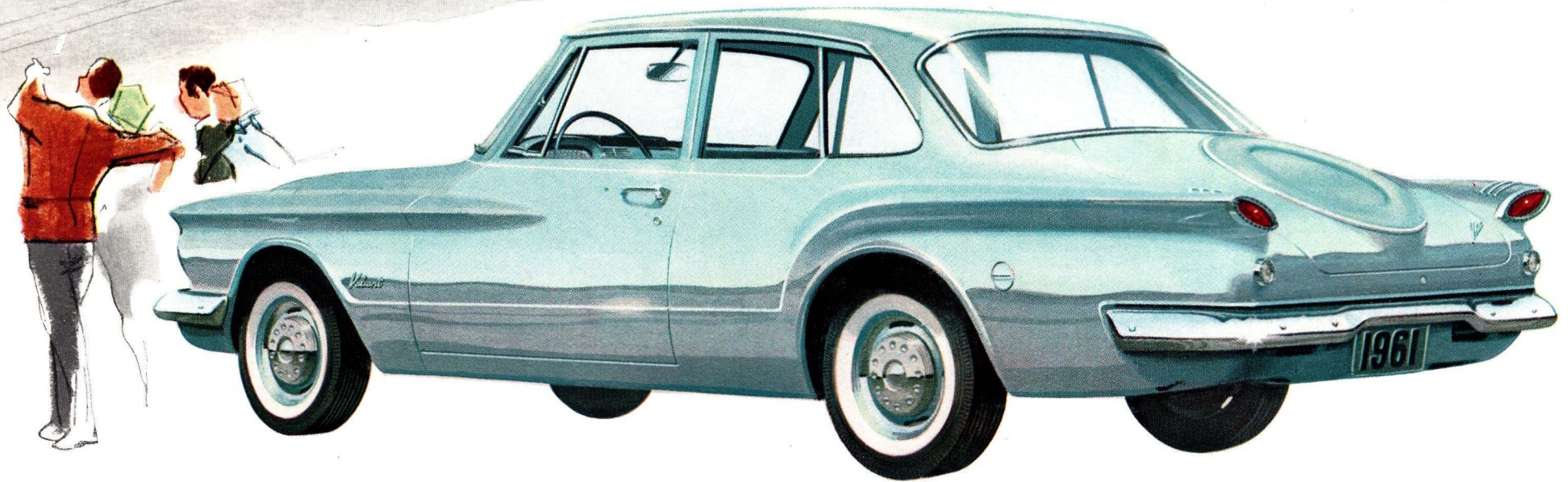
VALIANT two door hardtop—sleek, sporting, sh●r delight to drive



VALIANT four door sedan—big car look, big car space, with compact car economy



VALIANT two door sedan—car-on-a-budget with all the Valiant features



VALIANT station wagon—two feet less to park, yet 72 cubic feet of cargo room!



The only compact car in the world that's better than last year's Valiant

It's strange to sell a 1961 car by talking about a 1960 model. But what else is there to do? The 1960 Valiant revolutionised the whole idea of the compact car. And nobody could – or can – produce a better one.

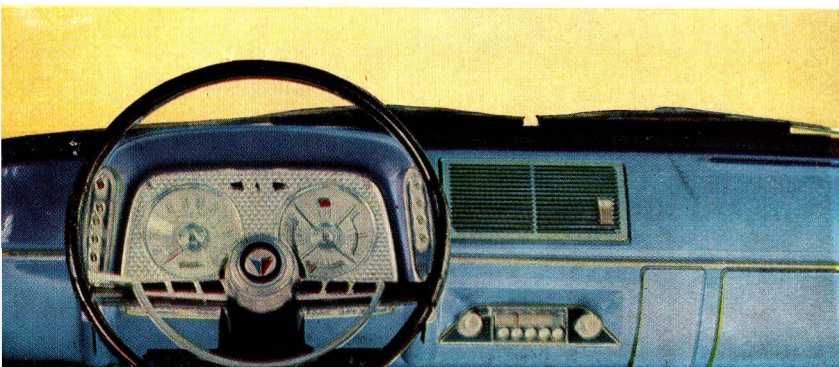
Except us.

Compact – on the outside only! The Valiant '61 gives you two feet less car to park and to handle. That's on the *outside*. On the inside, the Valiant welcomes a family of six – and luggage. And it seats them in relaxed, roomy comfort.

Conjuring trick? No, just the most brilliant car design team ever. Plus the tremendous space-saving that comes from Unibody construction. Space, strength and dust- and rattle-free riding come from the Unibody technique of building a rigid, all-welded body-frame.

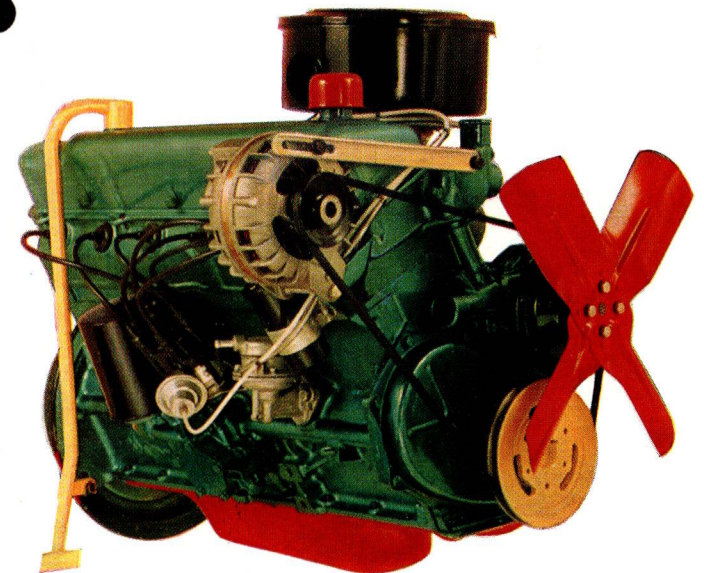
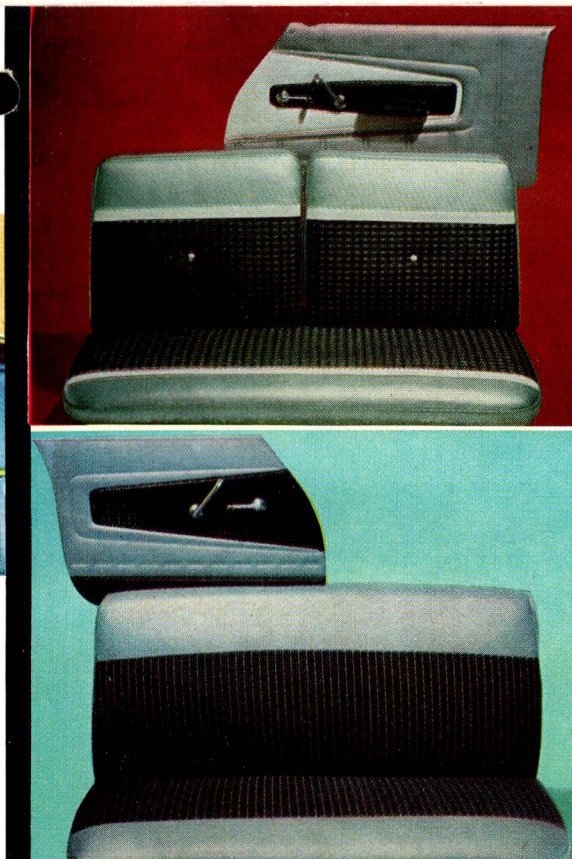
There are many other fine engineering features in the Valiant. Features you'd expect to find only on cars twice the price. Like the incomparable Torsion-Aire Suspension. Total-Contact Brakes. The sparkling Slant 6 Engine.

But the Valiant's greatest feature can be summed-up in one word. Enjoyment. The Valiant is sheer delight . . . to drive, to park, to see, to be seen in. *On the Valiant, enjoyment is fitted as standard.*



This beautiful, driver-minded dash panel puts every instrument in direct view; every control within easy reach. There's provision for controls to optional automatic transmission and heater.

New colours, new fabrics, new styling – and more room than you'd ever think possible. Only Valiant could build a compact car with a big-car interior.



The Valiant Slant 6 engine, 30° angled for power and performance. This engine won top honours in the 1960 Mobilgas Economy Run. Chrysler built Alternator gives high battery charging at low engine speeds.

MODEL AVAILABILITY

V-200 4-Door Sedan – 2-Door Hardtop
4-Door, 2-seat suburban Station Wagon

V-100 4-Door Sedan – 2-Door Sedan
4-Door, 2-seat suburban Station Wagon

Here is a selection of Factory-Installed accessories available at slight extra cost.
Push-Button Heater and Defroster – Push-Button Automatic Transmission – Push-Button Transistorised Radio – Safety-Padded Instrument panel – Complete Undercoating and underhood pad for noise dampening – Foot-operated Windshield Washer – Electrically-operated Tailgate window – Automatic Back-up Lights – Front and Rear Bumper Guards – Deluxe Dress-up Package for V-200 models.

SPECIFICATIONS

DIMENSIONS: Wheelbase: 106.5 ins. Tread, front: 56.0 ins. Tread, rear: 55.5 ins. Length overall: 183.7 ins. Width, overall: 70.4 ins. Height overall (sedans): 53.3 ins. Trunk volume Sedans: 24.9 cu. ft. Cubic ft. load space Station Wagons: 72.3 ft.

ENGINE: Type: in-line, OHV. Location and position: front, inclined 30 degrees. Cylinders: six. Cooling System: liquid. Displacement: 170 cu. in. Bore: 3.40". Stroke: 3.125". Compression ratio: 8.2 : 1 (Optional 6.9 : 1).

TIRES: Size: 6.50 x 13.0 in.

SUSPENSION: Front: torsion bars and ball joints. Rear: asymmetrical leaf springs.

CAPACITIES: Fuel Tank: 13 Gallons. Cooling System: 13 qaurts. Engine Crankcase: 4 quarts.

MANUAL TRANSMISSION: Type: 3-Speed Floor Shift. Ratios: 2.71, 1.83, 1.00, and 3.49 reverse.

BRAKES: Type: Four-wheel Hydraulic duo-servo. Ratio: 9" x 2½" front, 9" x 2" rear.



The policy of Chrysler International S.A. is one of continual improvement in design and manufacture wherever possible to assure a still finer car. Hence, specifications, equipment, and prices are subject to change without notice.