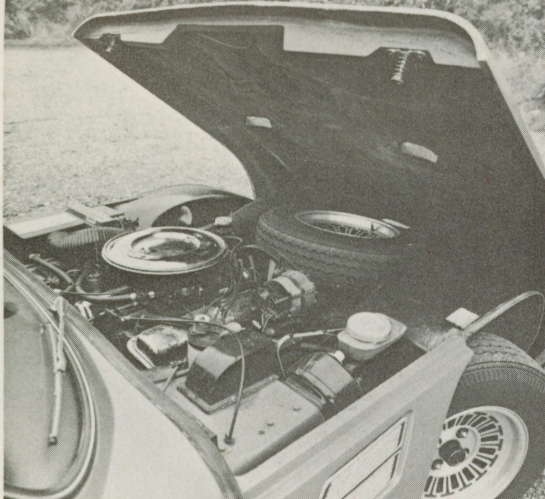


**TVR TVR 3000M SPORTSCAR**





### TVR 3000M SPECIFICATION

#### ENGINE:

Cylinders.....	Vee 6
Bore.....	93.97 mm
Stroke.....	72.41 mm.
Cubic Capacity.....	2994 cc.
Compression Ratio.....	8.9 : 1
Fuel Pump.....	AC Mechanical
Oil Filter.....	AC Full Flow
Carburettor.....	Dual Choke Weber

Max. Power..... 142 bhp Nett  
at 5000 rpm.

Max. Torque..... 172 lb. ft.  
at 3000 rpm.

#### TRANSMISSION:

Clutch.....	242 mm. dia.
Top Gear Ratio.....	1.00 : 1
3rd Gear Ratio.....	1.41 : 1
2nd Gear Ratio.....	1.95 : 1
1st Gear Ratio.....	3.16 : 1
Rev. Gear Ratio.....	3.35 : 1
Final Drive.....	3.45 : 1

#### M.P.H. AT 1000 REVS.

Top Gear.....	21.6
3rd Gear.....	15.32
2nd Gear.....	11.08
1st Gear.....	6.84

#### SPEED IN GEARS AT 6000 rpm.

*4th.....	130 mph
3rd.....	91 mph
2nd.....	66 mph
1st.....	41 mph

\* Depending on conditions

#### PERFORMANCE Approx.

0-60 mph.....	7.5 sec.
Maximum Speed.....	125+ mph
Fuel Consumption.....	22 mpg. Nominal

#### BRAKES

Disc Front.....	10.875 in. dia.
Drum Rear.....	9 in. dia. x 1 3/4"
Dual Circuit.....	Servo-Assisted

#### SUSPENSION

Front Independent & Double WISHBONES.....	Coil Springs
Rear Independent & Double WISHBONES.....	Coil Springs

#### STEERING

Rack and Pinion

#### SHOCK ABSORBERS

Front.....	Telescopic
Rear.....	Telescopic

#### WHEELS AND TYRES

6JK X 14 in. dia. TVR Aluminium Alloy  
185 X 14 HR Radial Ply Tyres

#### BATTERY

12 Volt Negative Earth. 58 Ah.

#### DIMENSIONS

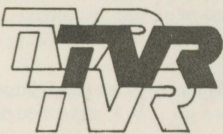
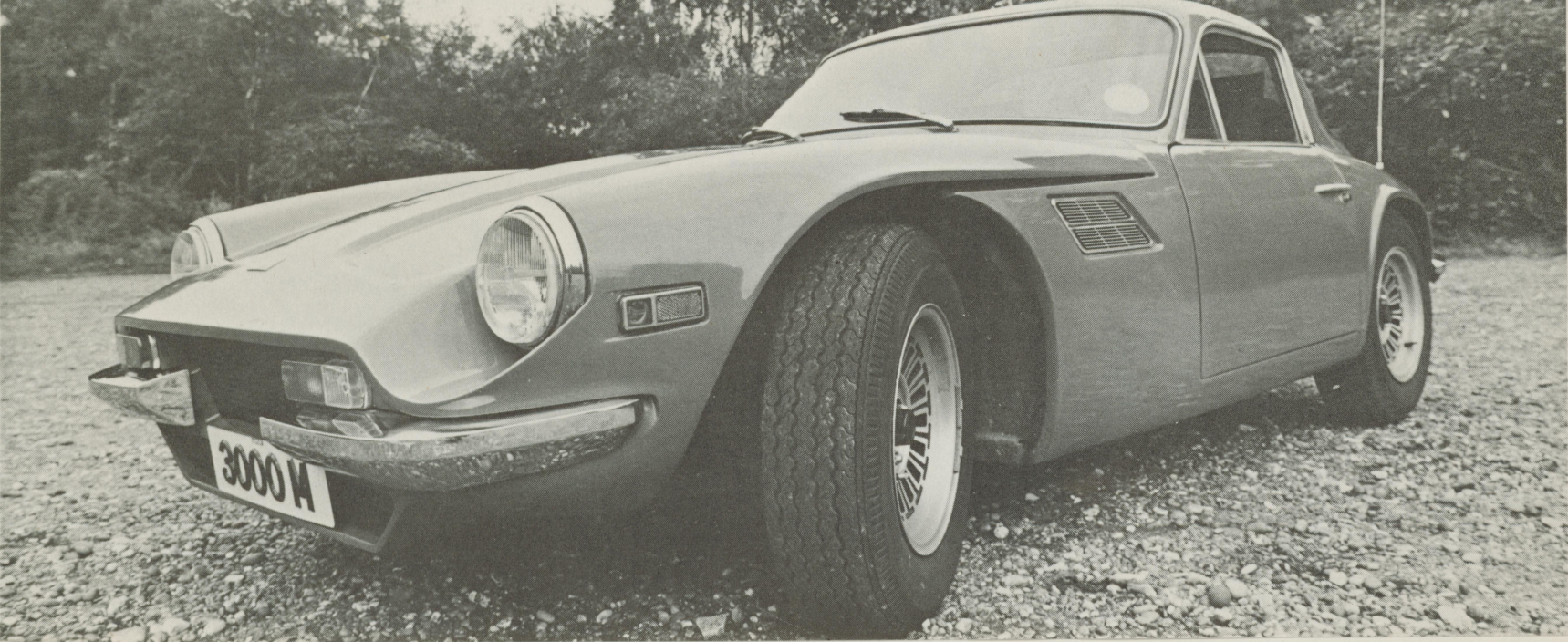
Wheelbase.....	7' 6"
Track Front.....	4' 5 3/4"
Rear.....	4' 5 3/4"
Overall Length.....	12' 10"
Width.....	5' 4"
Height.....	3' 11"
Ground Clearance.....	5"
Turning Circle Right.....	35' 9"
Turning Circle Left.....	35' 9"
Fuel Tank Capacity.....	12 gallons

TVR Engineering Limited reserves the right to vary specifications of all products manufactured by them at any time.

# TVR

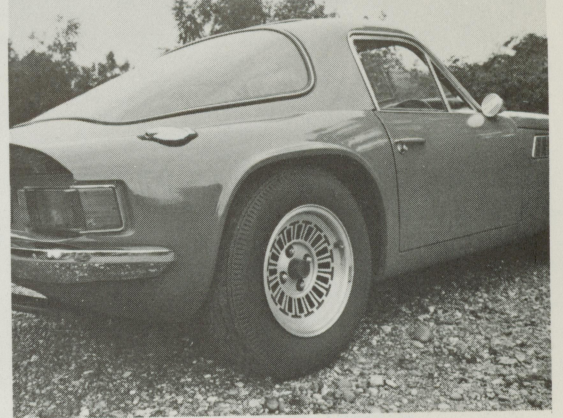
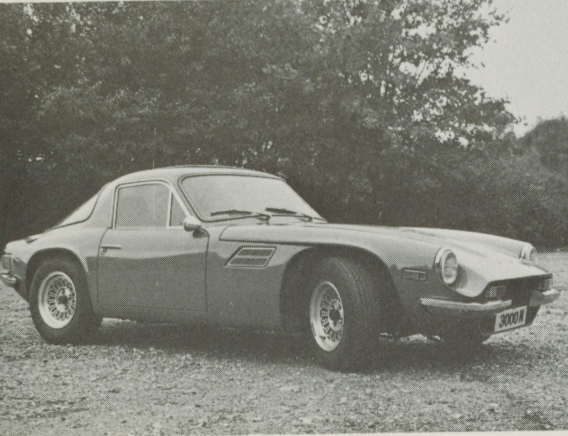
Engineering Limited • Exclusive Sportscar Manufacturers • Bristol Avenue, Blackpool FY2 OJF, England • Tel. 0253-56151 • Grams TEEVAR





**TVR 3000M SPORTSCAR**





This is the superb TVR 3000M, Britain's exclusive, handbuilt sports car.

\*

Designed for sheer driving pleasure the two seater TVR 3000M is supreme in its class.

\*

Exclusivity is guaranteed by limited production. Quality assured by the painstaking British craftsmanship that goes into each TVR.

\*

The sleek, elegant lines and the matchless hand finish of the TVR 3000M will have those traffic bound motorists tapping. Breathtaking acceleration (0-60mph achieved in 7.5 seconds) and the long-legged performance of a GT car, makes the TVR 3000M a world beater.

\*

The massive strength of the tubular steel backbone chassis offers the ideal combination of rigidity and safety bringing a high degree of protection to the car's occupants.

\*

Just sit in the driving position of the TVR 3000M and you will realise this is a *real* drivers car. The small leather steering wheel is positioned perfectly for the ideal straight-arm, 10-to-2 driving attitude. A short, stubby gear lever is immediately to hand for that fast downward shift when overtaking. The handbrake is ideally suited for stop-start motoring in heavy traffic. Bucket seats for driver and passenger give unrivalled comfort on even the longest journey, and minimise the danger of driver fatigue. Clutch, brake and accelerator pedals are ideally positioned for fast gear changes and for heel-and-toeing.

\*

The brilliant performance of the TVR 3000M is combined with the mechanical reliability of the latest version of Ford's well proven 3-litre V6 engine.

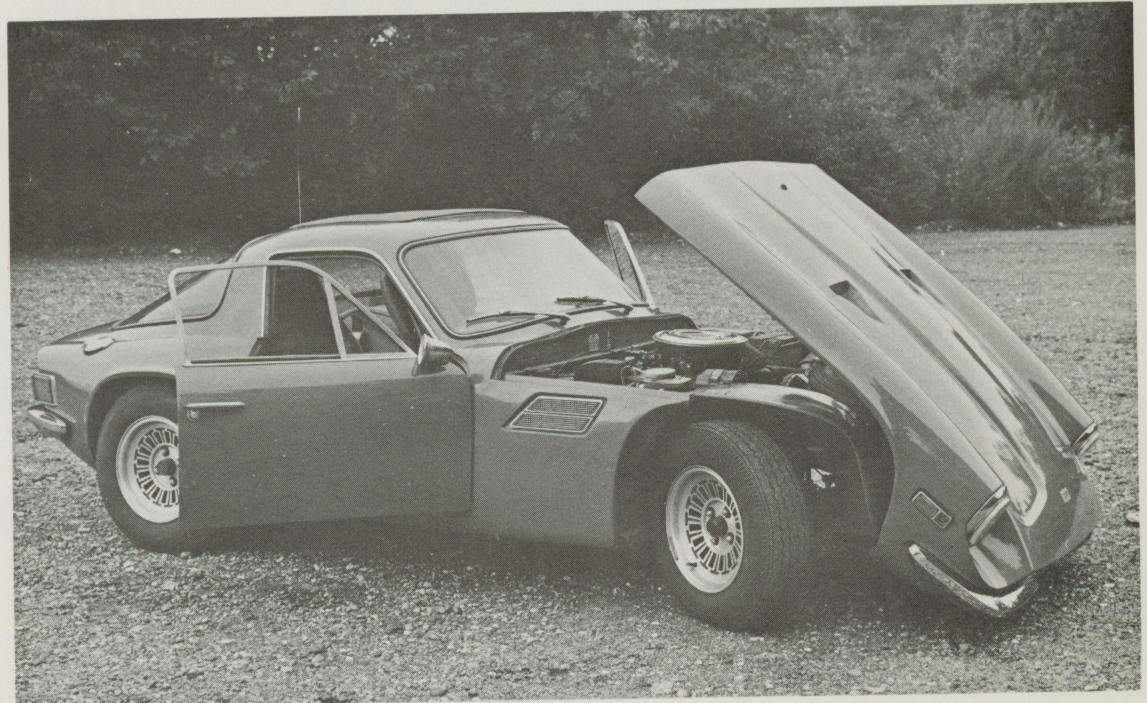
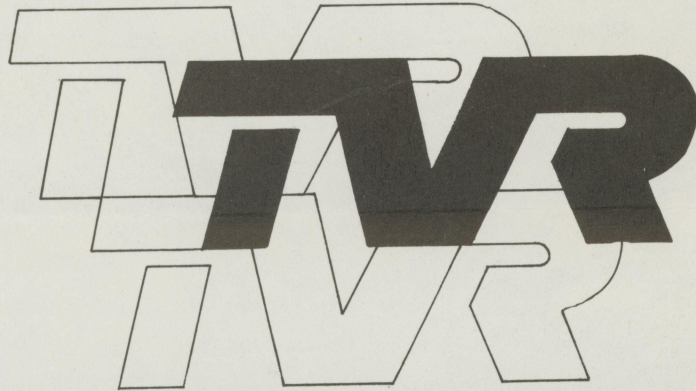
The V6 power unit combines with the lightweight body and chassis to give the TVR 3000M a top-speed capability of 130 mph.

\*

It is not only on the Autobahns that the TVR 3000M will excel - cruising happily at about 120 mph, but also in heavy city traffic, where the low speed torque characteristics of the Ford V6 engine enables the 3000M to motor along quite happily in high gears at low speeds.

\*

Handling and road-holding will be high on the enthusiast's list of requirements from his sports car. It is in this area that the TVR 3000M really excels. Impressively high cornering speeds can be achieved, roll has been almost completely eliminated and the steering is accurate and light ensuring precision cornering. The independent suspension of the TVR 3000M provides a very comfortable, yet firm ride, absorbing road bumps yet still transmitting the 'feel' of the road to the driver.



Corrosion is virtually eliminated in the TVR 3000M as all chassis tubes are lined with oil and an exterior rubberised underseal completes the protection. We even give a unique 5 year guarantee on our chassis.

\*

There are no extras with the TVR 3000M. Included in its price are alloy racing wheels, radial tyres, independent suspension, push-button radio, sun-roof, automatic seat belts, heated rear screen, leather steering wheel, Sundym tinted glass, full instrumentation and much more besides.

The TVR 3000M is available in six standard colours giving a quality of finish second to none. However, it is expected that a TVR owner would be an individualist and he can specify his own chosen colour at small extra cost.

\*

Test drive the 3000M soon. You'll never want to drive any other car.

\* \* \*

